



The Balerno

4 bedroom detached home

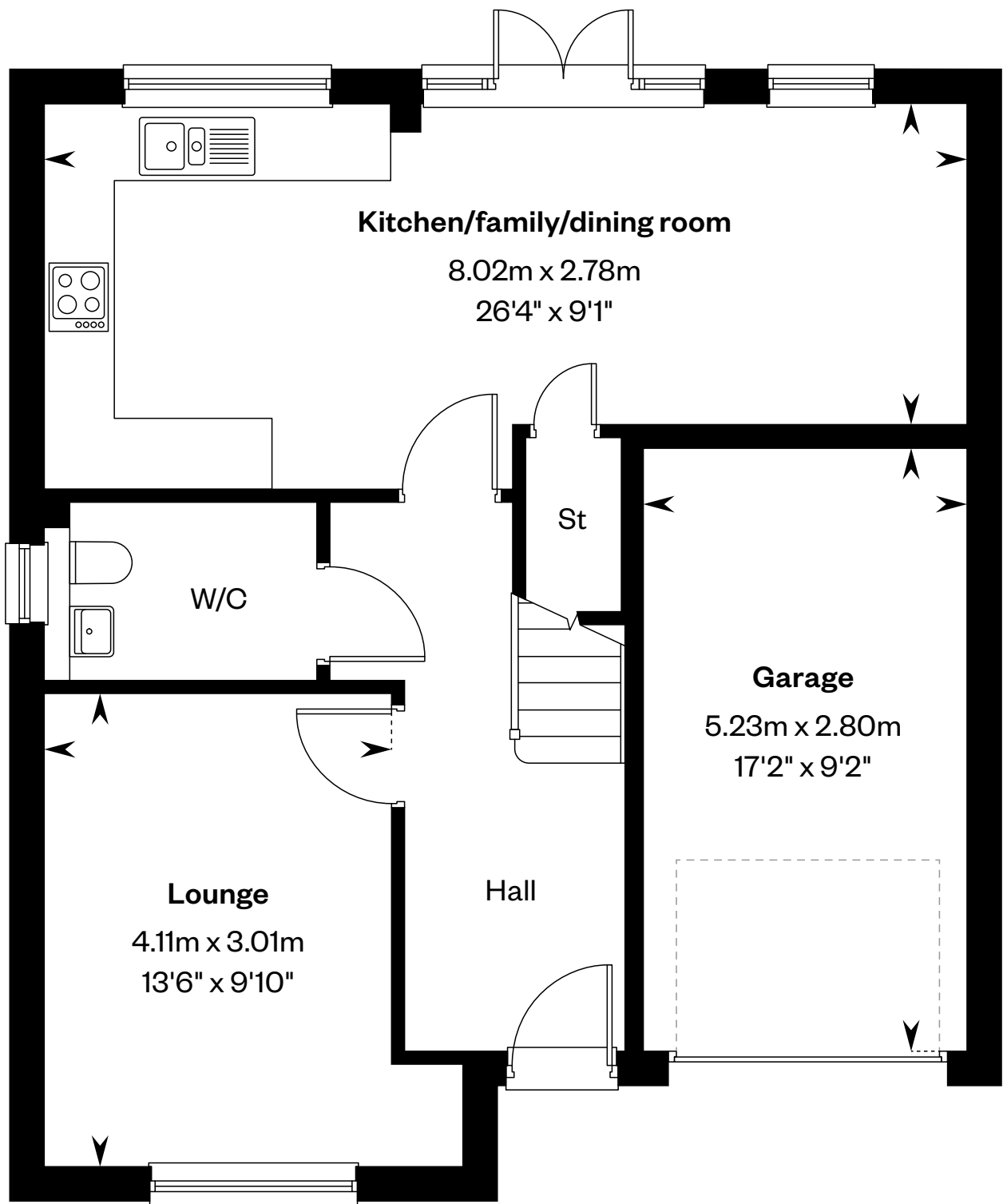


The Balerno

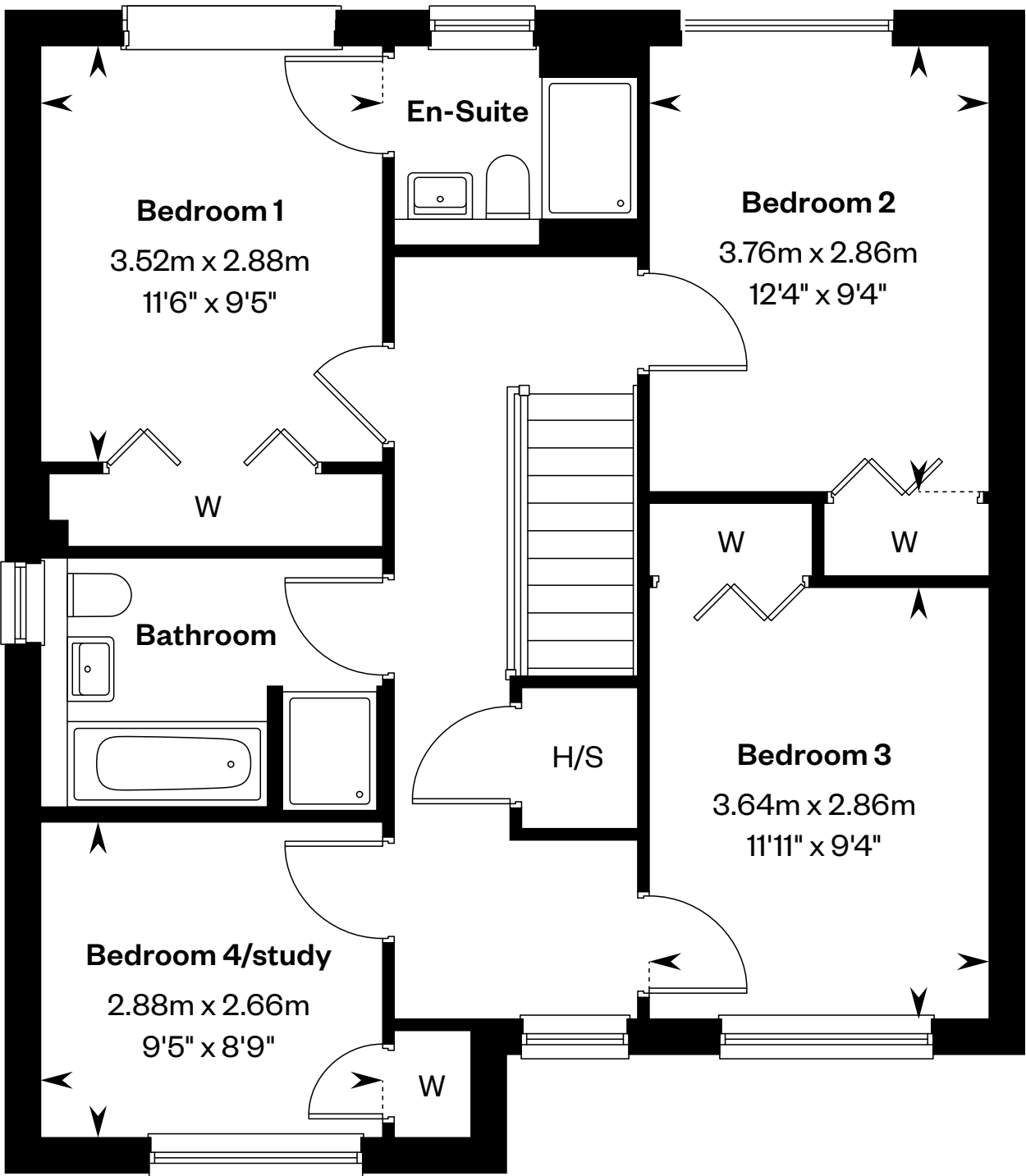
4 bedroom detached home

Plots 402 & 492 – as shown

Plots 477 & 485 – handed



Ground floor



First floor

H/S: Heating source cupboard. St: Store cupboard. W: Wardrobe.

IMPORTANT NOTIOE TO CUSTOMERS: The Consumer Protection from Unfair Trading Regulations 2008. Cala Homes (North) Limited operates a policy of continual product development and the specifications outlined in this brochure are indicative only. The computer generated images and photographs do not necessarily represent the actual finishings/elevation or treatments, landscaping, furnishings and fittings at this development. Information contained is accurate at date of publication on 02.05.25. See the main brochure for the full Consumer Protection statement.



The Baxter

4 bedroom detached home

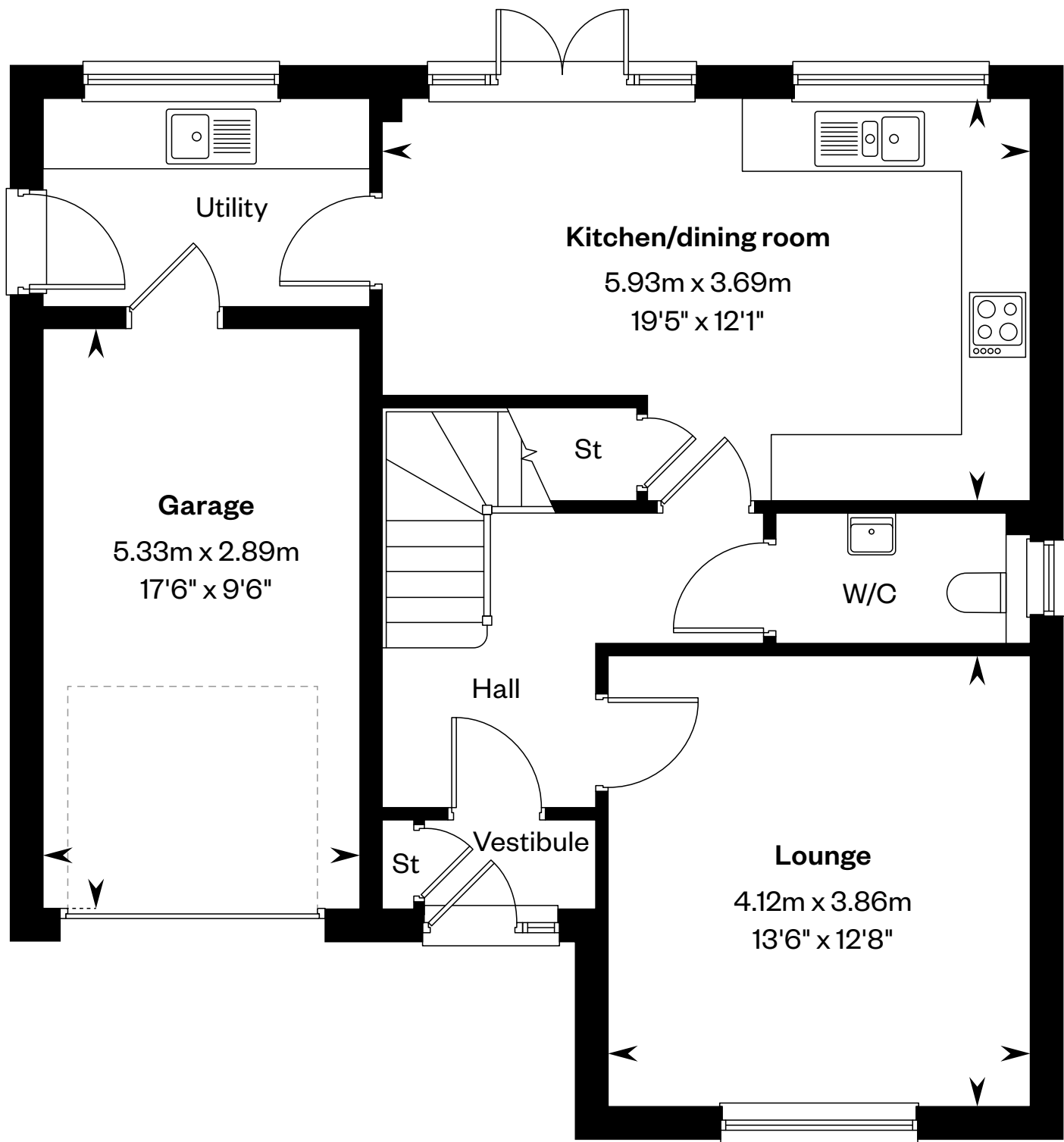


The Baxter

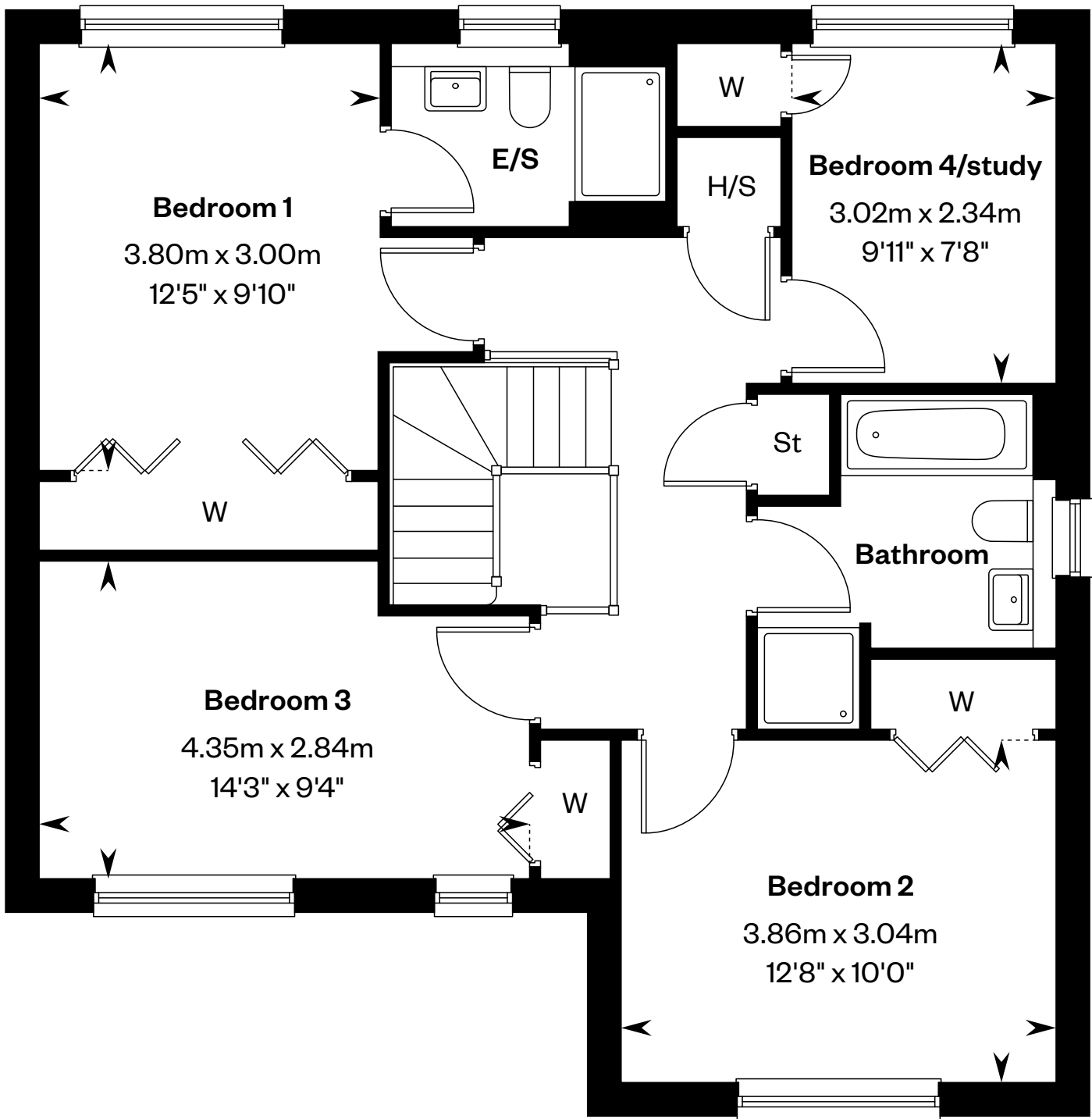
4 bedroom detached home

Plots 403, 406, 407, 470 & 479 – as shown

Plots 411, 422, 465, 467 & 482 – handed



Ground floor



First floor

E/S: En-Suite. H/S: Heating source cupboard. St: Store cupboard. W: Wardrobe.

IMPORTANT NOTIOE TO CUSTOMERS: The Consumer Protection from Unfair Trading Regulations 2008. Cala Homes (North) Limited operates a policy of continual product development and the specifications outlined in this brochure are indicative only. The computer generated images and photographs do not necessarily represent the actual finishings/elevation or treatments, landscaping, furnishings and fittings at this development. Information contained is accurate at date of publication on 02.05.25. See the main brochure for the full Consumer Protection statement.



The Brodie

4 bedroom detached home



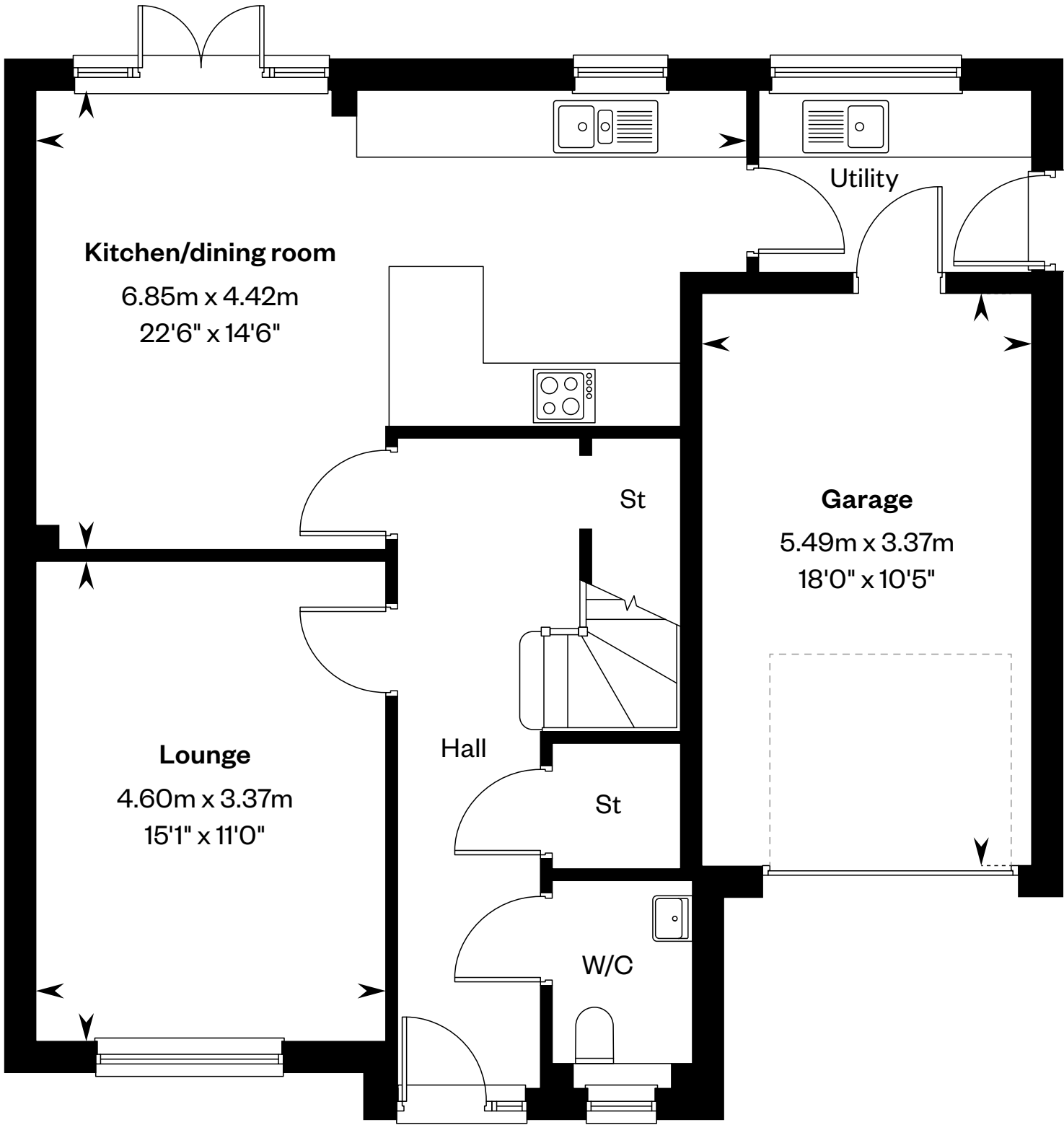
Computer generated image - The Brodie

The Brodie

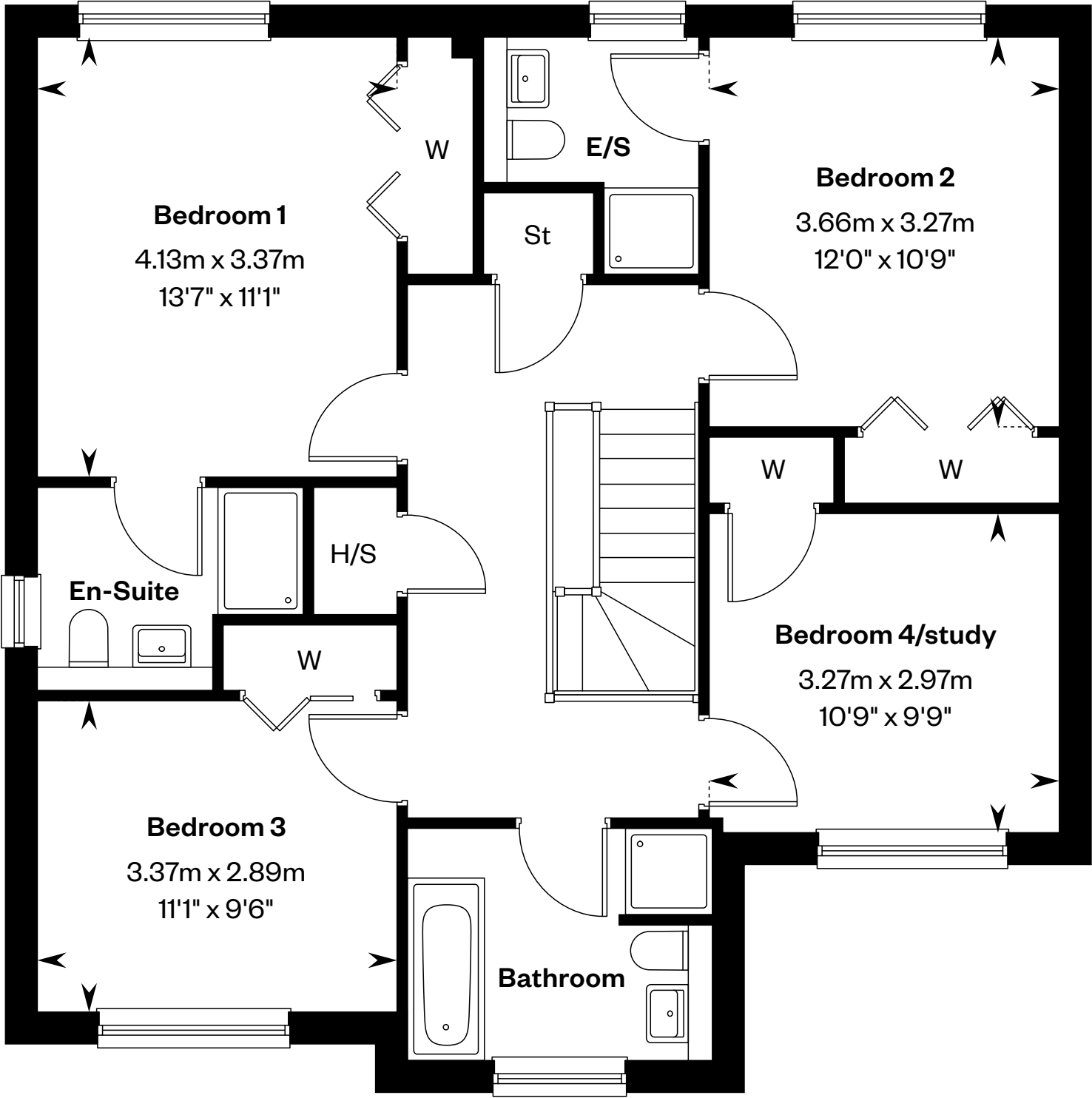
4 bedroom detached home

Plots 405, 409, 424, 428, 462, 464 & 481 – as shown

Plots 404, 427, 471, 476, 480, 483, 486 & 487 – handed



Ground floor



First floor

E/S: En-Suite. H/S: Heating source cupboard. St: Store cupboard. W: Wardrobe.

IMPORTANT NOTICE TO CUSTOMERS: The Consumer Protection from Unfair Trading Regulations 2008. Cala Homes (North) Limited operates a policy of continual product development and the specifications outlined in this brochure are indicative only. The computer generated images and photographs do not necessarily represent the actual finishings/elevation or treatments, landscaping, furnishings and fittings at this development. Information contained is accurate at date of publication on 02.05.25. See the main brochure for the full Consumer Protection statement.



The Comrie

4 bedroom detached home with study

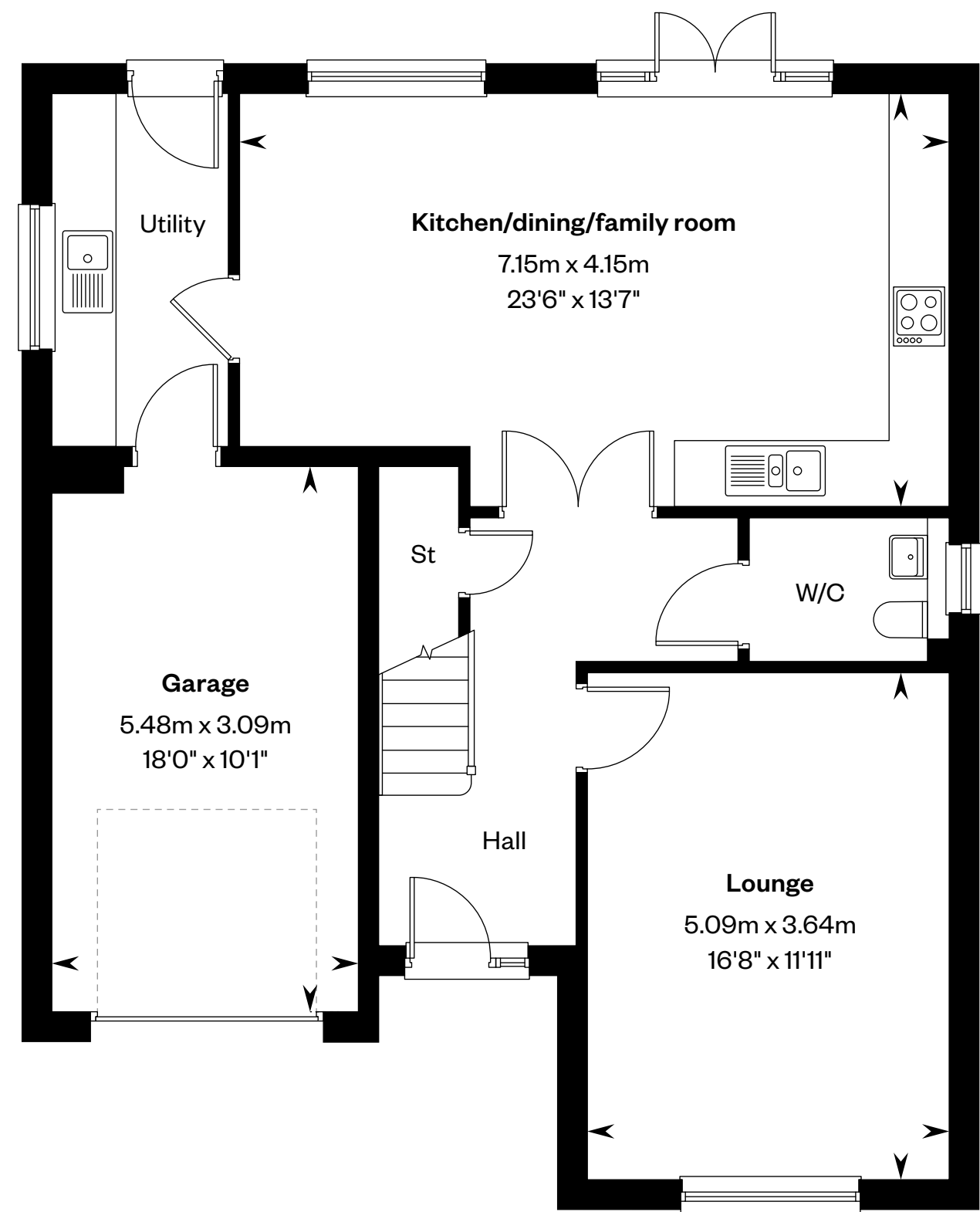


The Comrie

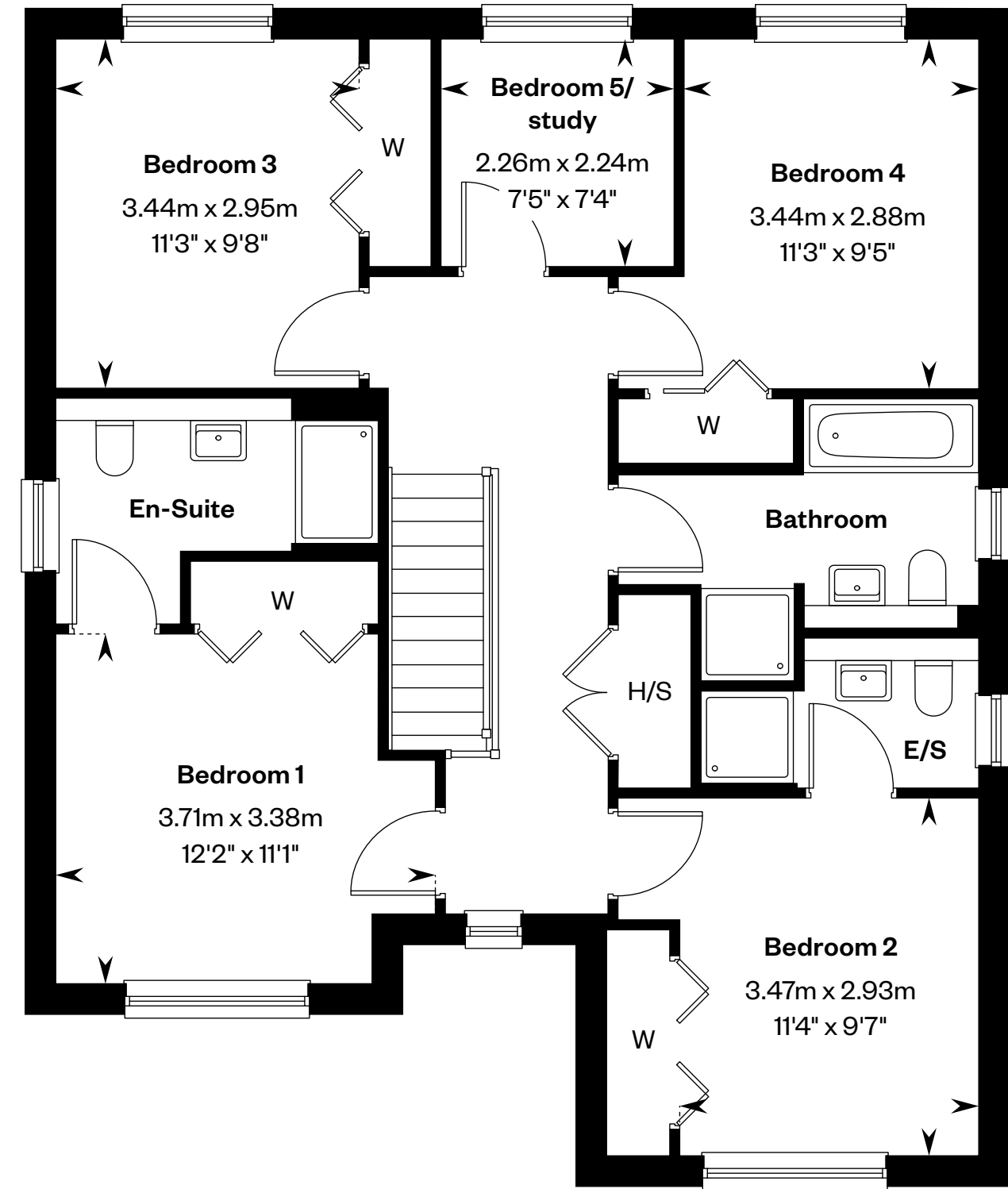
4 bedroom detached home with study

Plots 401, 410, 423, 426, 469 & 490 – as shown

Plots 420, 463, 468, 473, 478 & 484 – handed



Ground floor



First floor

E/S: En-Suite. H/S: Heating source cupboard. St: Store cupboard. W: Wardrobe.

IMPORTANT NOTIOE TO CUSTOMERS: The Consumer Protection from Unfair Trading Regulations 2008. Cala Homes (North) Limited operates a policy of continual product development and the specifications outlined in this brochure are indicative only. The computer generated images and photographs do not necessarily represent the actual finishings/elevation or treatments, landscaping, furnishings and fittings at this development. Information contained is accurate at date of publication on 02.05.25. See the main brochure for the full Consumer Protection statement.



The Crichton

5 bedroom detached home



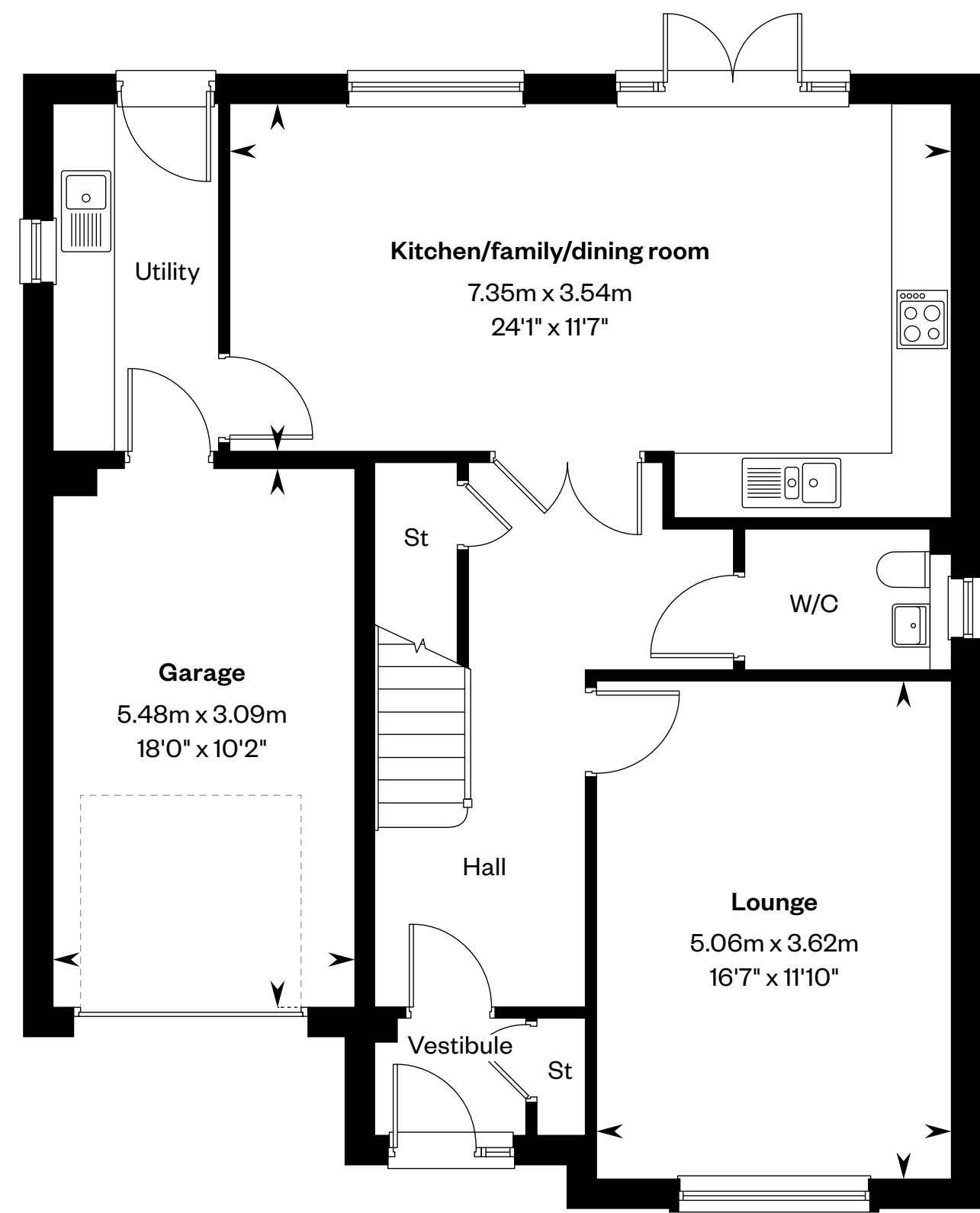
Computer generated image - The Crichton

The Crichton

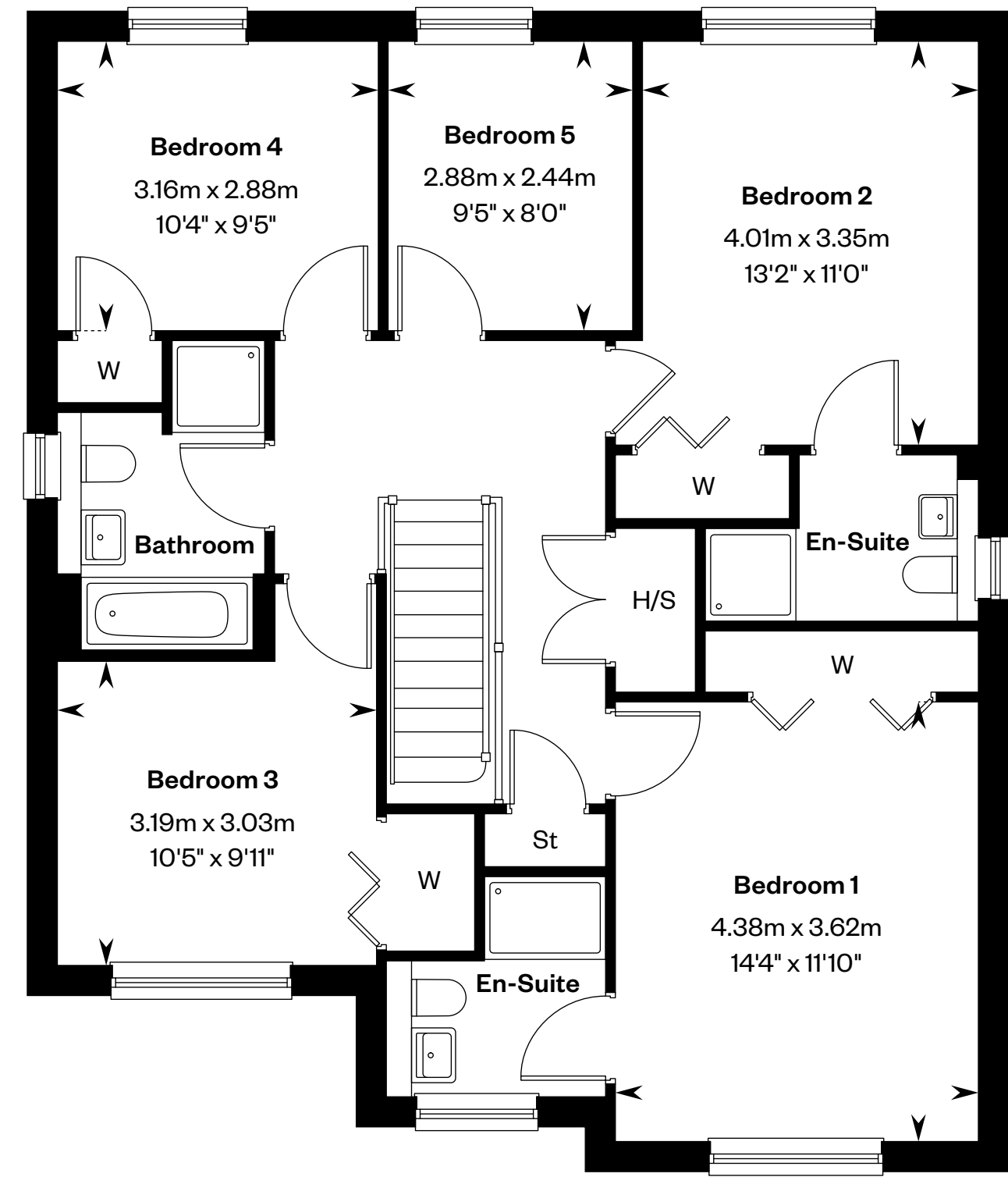
5 bedroom detached home

Plots 435 & 437 – as shown

Plot 432 – handed



Ground floor



First floor

H/S: Heating source cupboard. St: Store cupboard. W: Wardrobe.

IMPORTANT NOTIOE TO CUSTOMERS: The Consumer Protection from Unfair Trading Regulations 2008. Cala Homes (North) Limited operates a policy of continual product development and the specifications outlined in this brochure are indicative only. The computer generated images and photographs do not necessarily represent the actual finishings/elevation or treatments, landscaping, furnishings and fittings at this development. Information contained is accurate at date of publication on 02.05.25. See the main brochure for the full Consumer Protection statement.



The Crieff

5 bedroom detached home



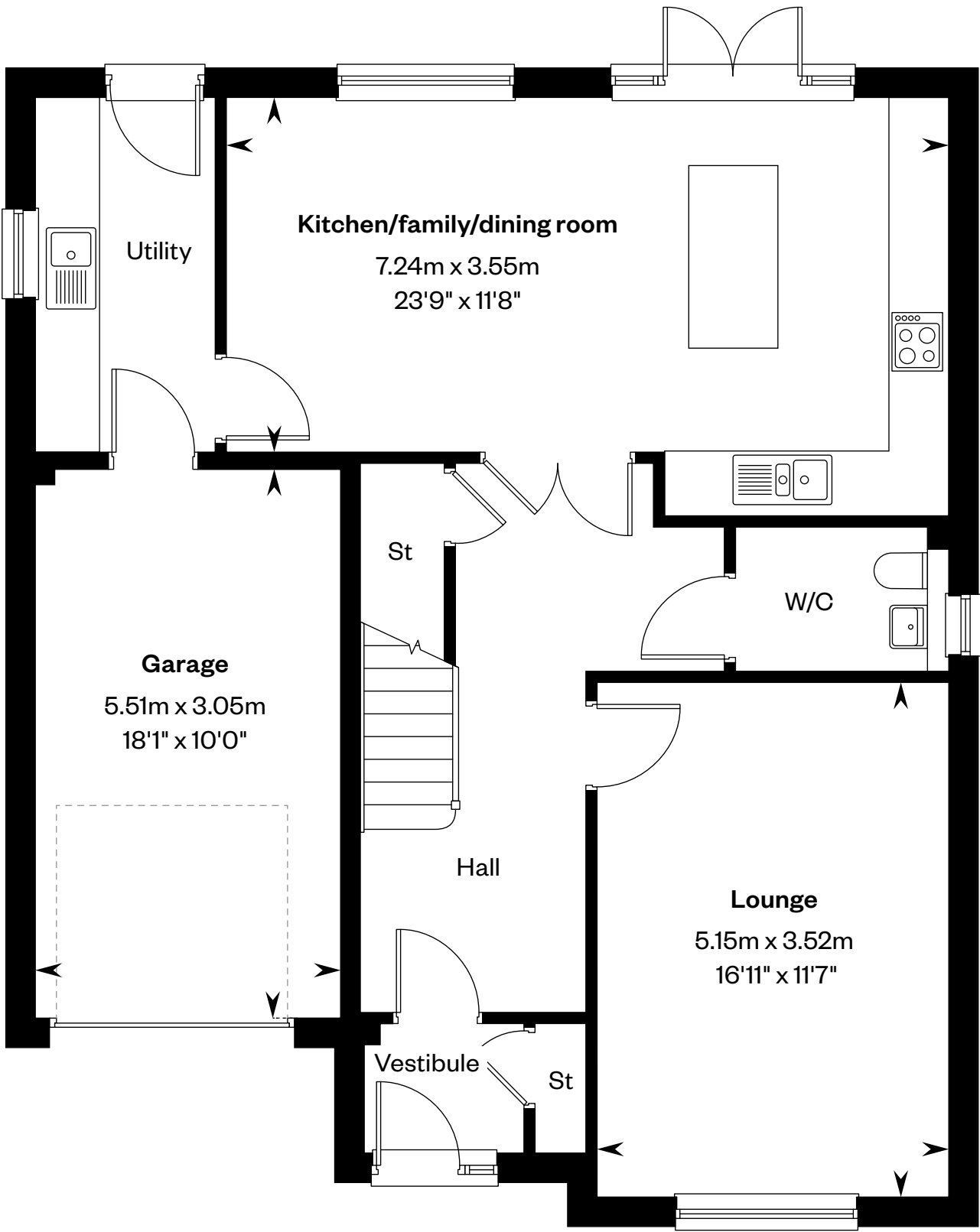
Computer generated image - The Crieff

The Crieff

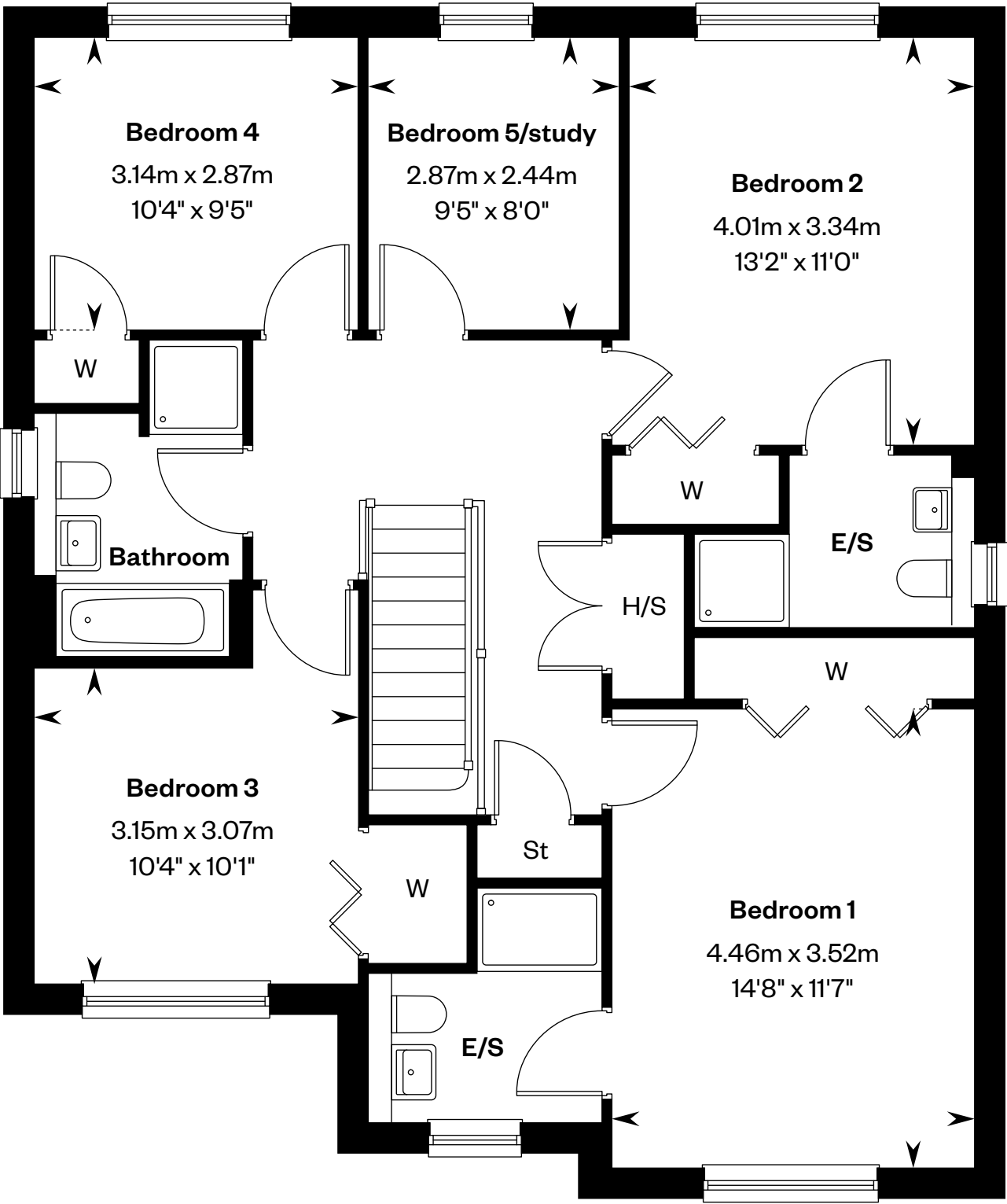
5 bedroom detached home

Plots 408, 421 & 425 – as shown

Plots 417, 431, 472, 475 & 488 – handed



Ground floor



First floor

E/S: En-Suite. H/S: Heating source cupboard. St: Store cupboard. W: Wardrobe.

IMPORTANT NOTIOE TO CUSTOMERS: The Consumer Protection from Unfair Trading Regulations 2008. Cala Homes (North) Limited operates a policy of continual product development and the specifications outlined in this brochure are indicative only. The computer generated images and photographs do not necessarily represent the actual finishings/elevation or treatments, landscaping, furnishings and fittings at this development. Information contained is accurate at date of publication on 02.05.25. See the main brochure for the full Consumer Protection statement.



The Darroch

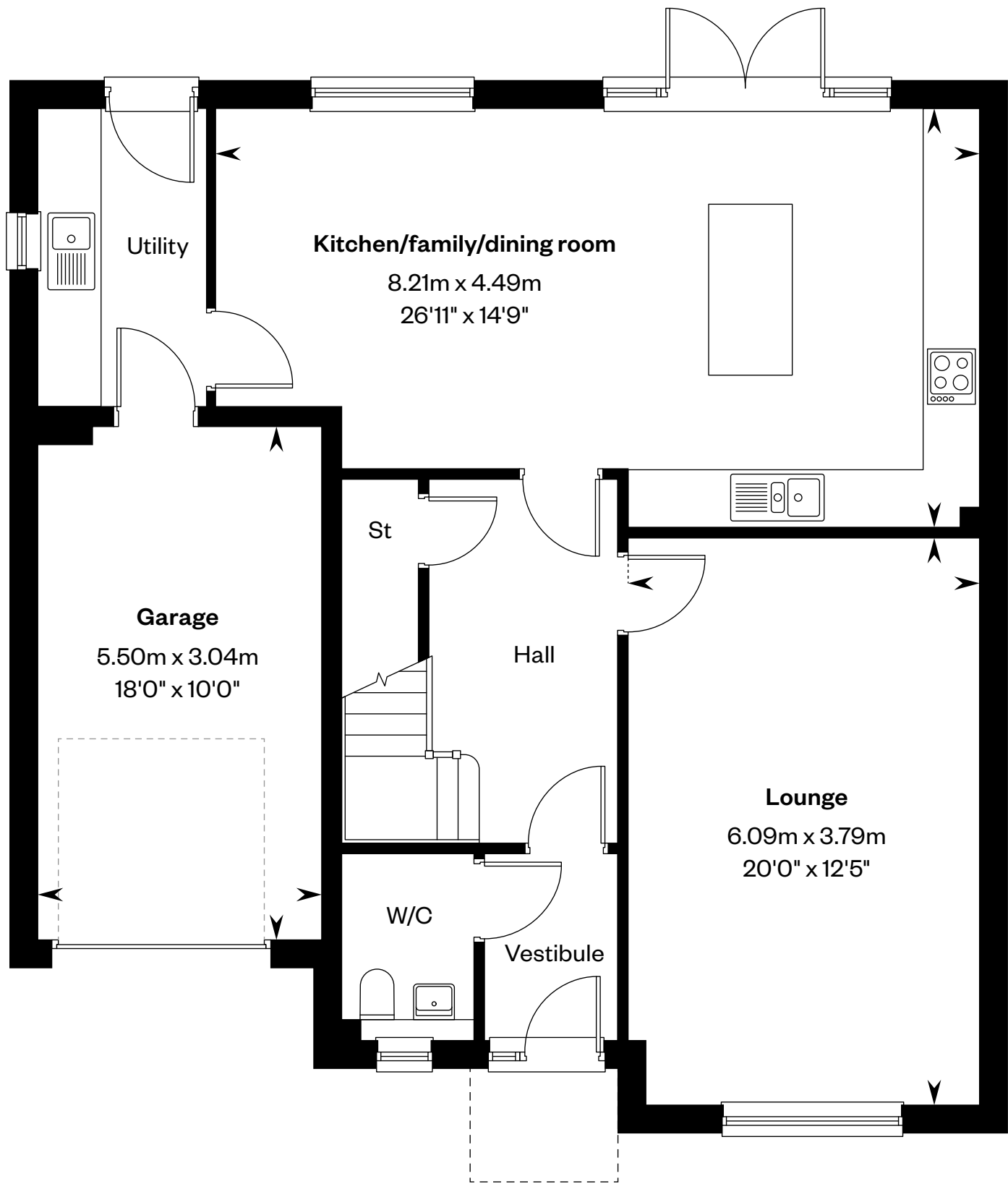
5 bedroom detached home



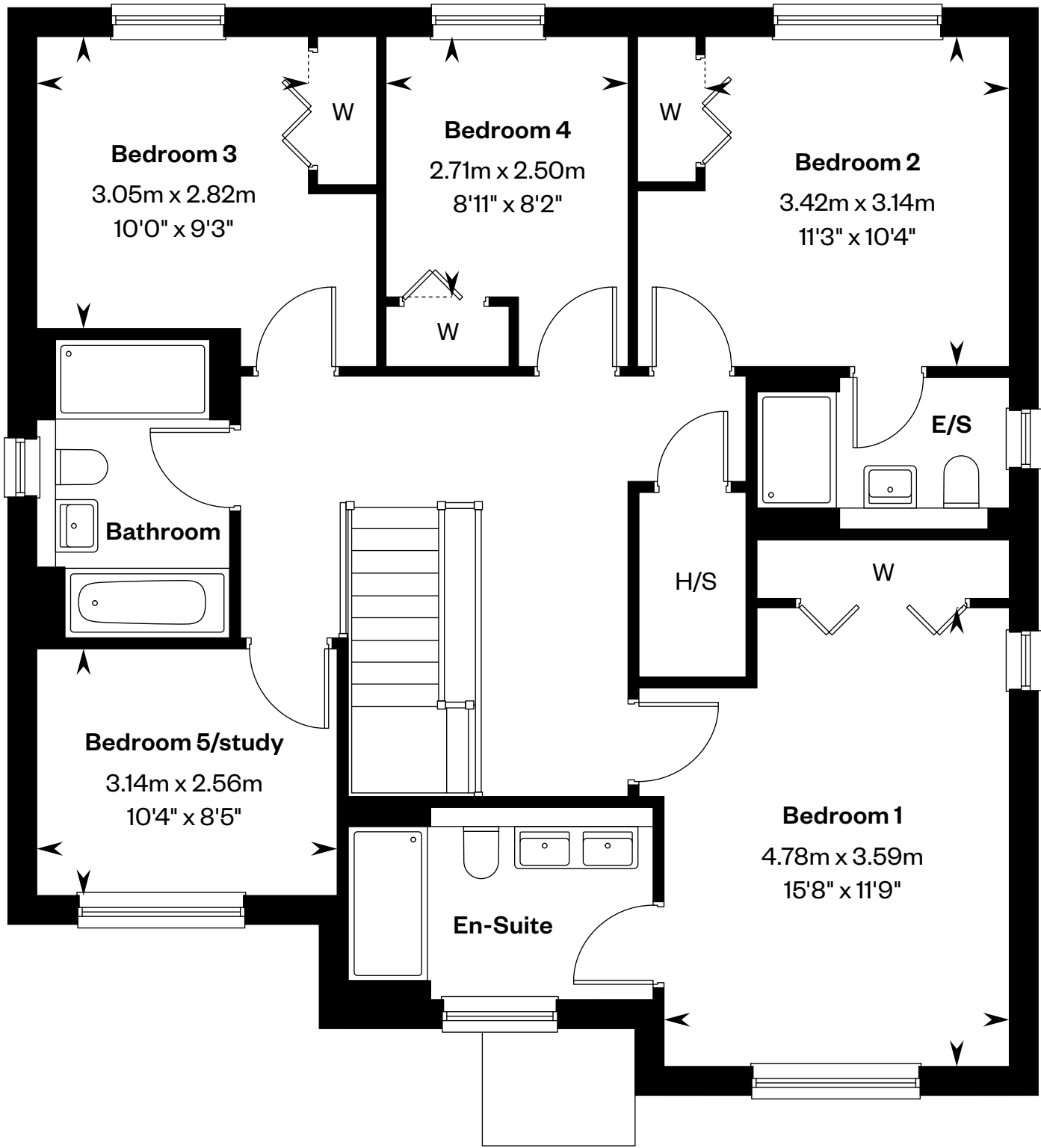
The Darroch

5 bedroom detached home

Plots 433, 436 & 439 – as shown



Ground floor



First floor

E/S: En-Suite. H/S: Heating source cupboard. St: Store cupboard. W: Wardrobe.

IMPORTANT NOTIOE TO CUSTOMERS: The Consumer Protection from Unfair Trading Regulations 2008. Cala Homes (North) Limited operates a policy of continual product development and the specifications outlined in this brochure are indicative only. The computer generated images and photographs do not necessarily represent the actual finishings/elevation or treatments, landscaping, furnishings and fittings at this development. Information contained is accurate at date of publication on 02.05.25. See the main brochure for the full Consumer Protection statement.



The Darvel

5 bedroom detached home



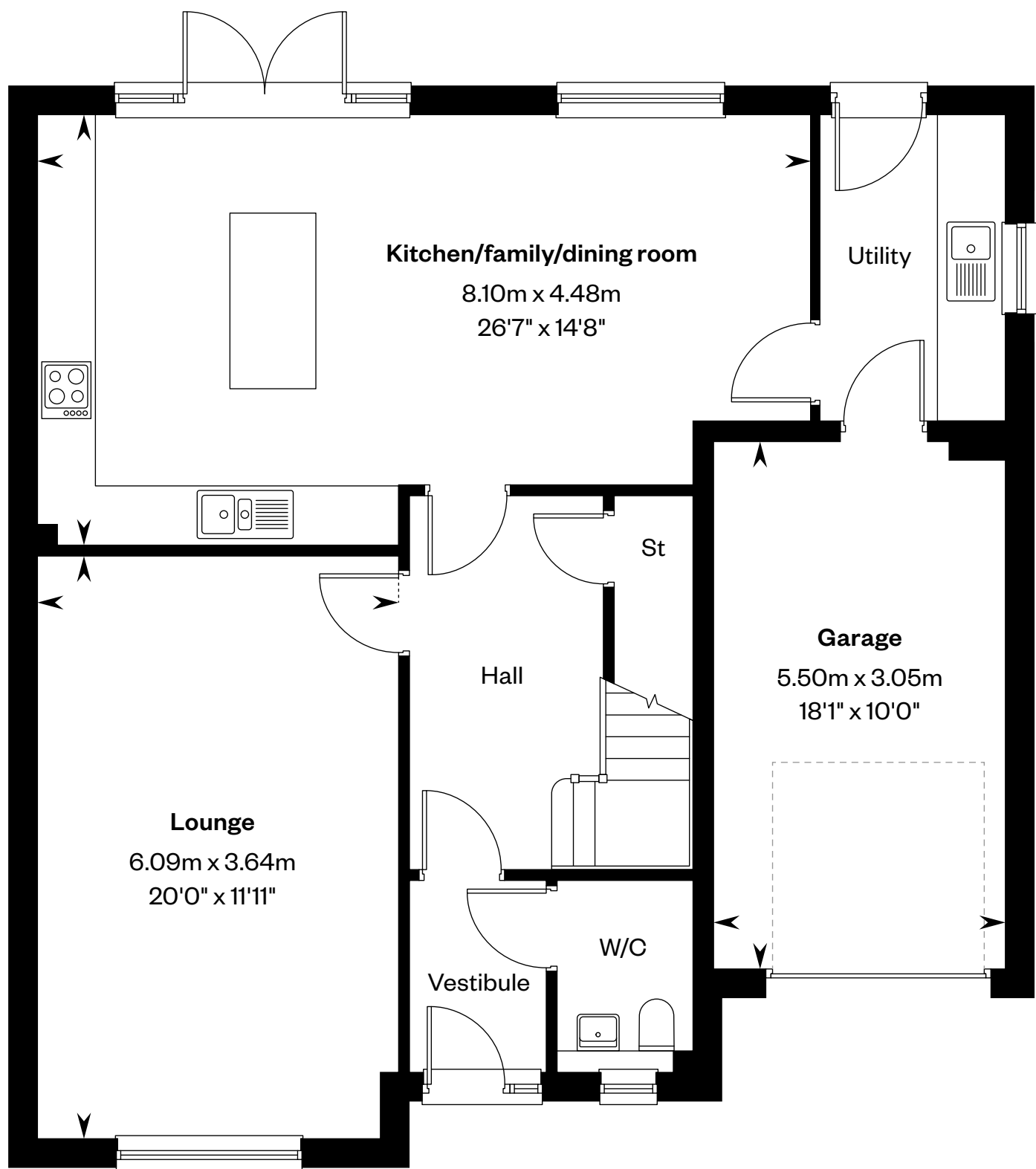
Computer generated image - The Darvel

The Darvel

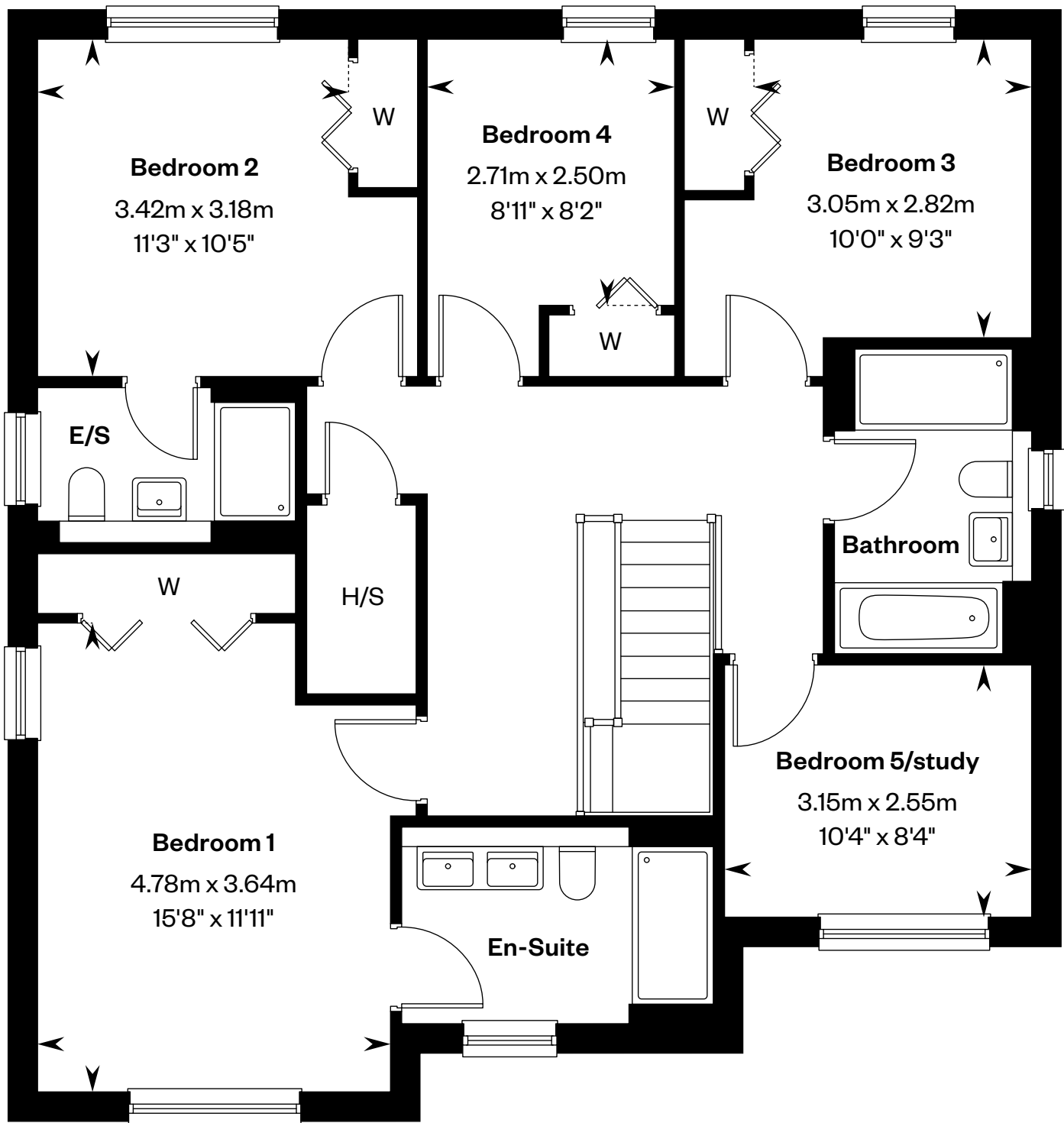
5 bedroom detached home

Plots 414 & 466 – as shown

Plots 429 & 430 – handed



Ground floor



First floor

E/S: En-Suite. H/S: Heating source cupboard. St: Store cupboard. W: Wardrobe.

IMPORTANT NOTIOE TO CUSTOMERS: The Consumer Protection from Unfair Trading Regulations 2008. Cala Homes (North) Limited operates a policy of continual product development and the specifications outlined in this brochure are indicative only. The computer generated images and photographs do not necessarily represent the actual finishings/elevation or treatments, landscaping, furnishings and fittings at this development. Information contained is accurate at date of publication on 02.05.25. See the main brochure for the full Consumer Protection statement.



The Fir

3 bedroom detached home



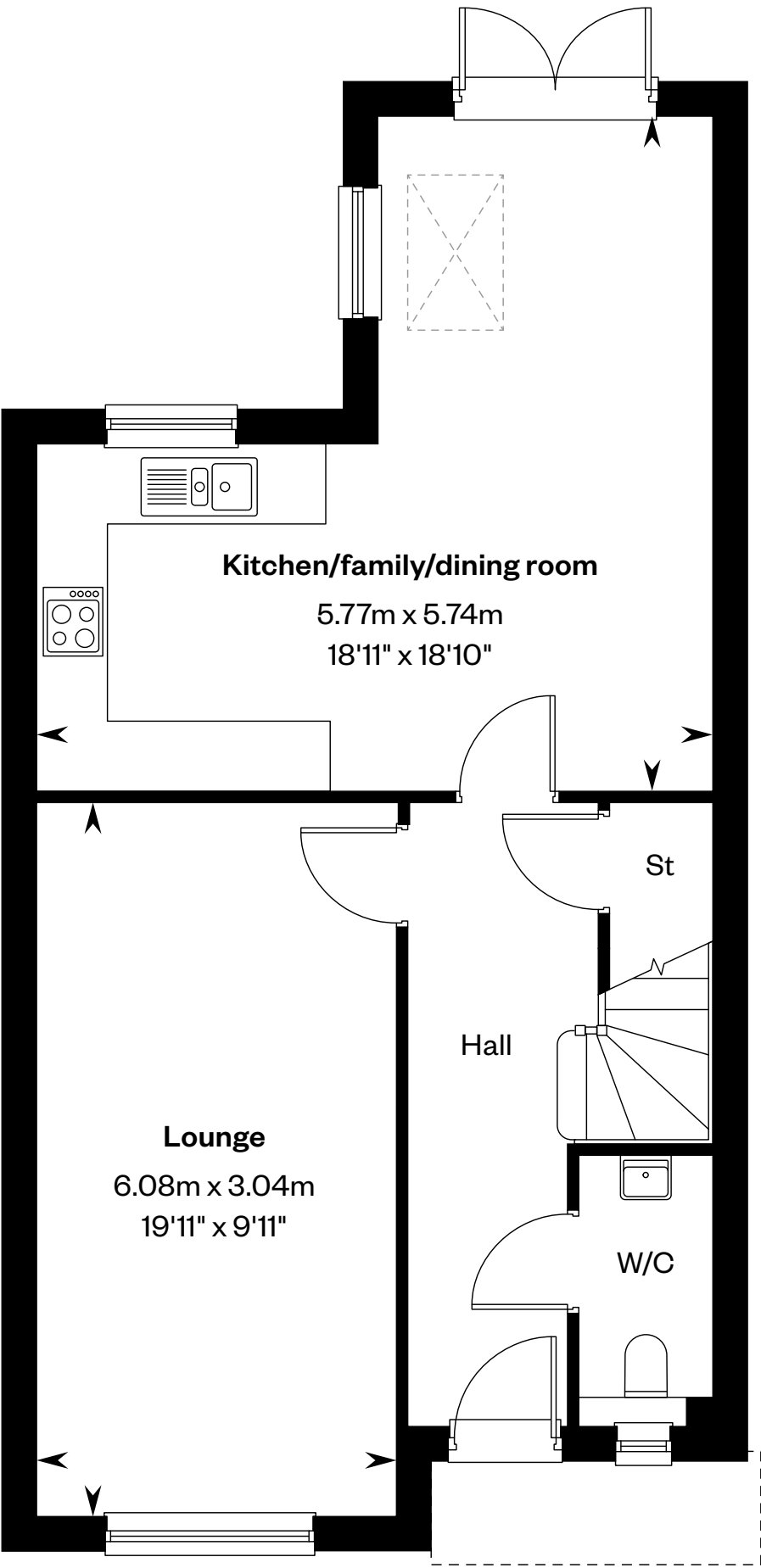
Computer generated image - The Fir

The Fir

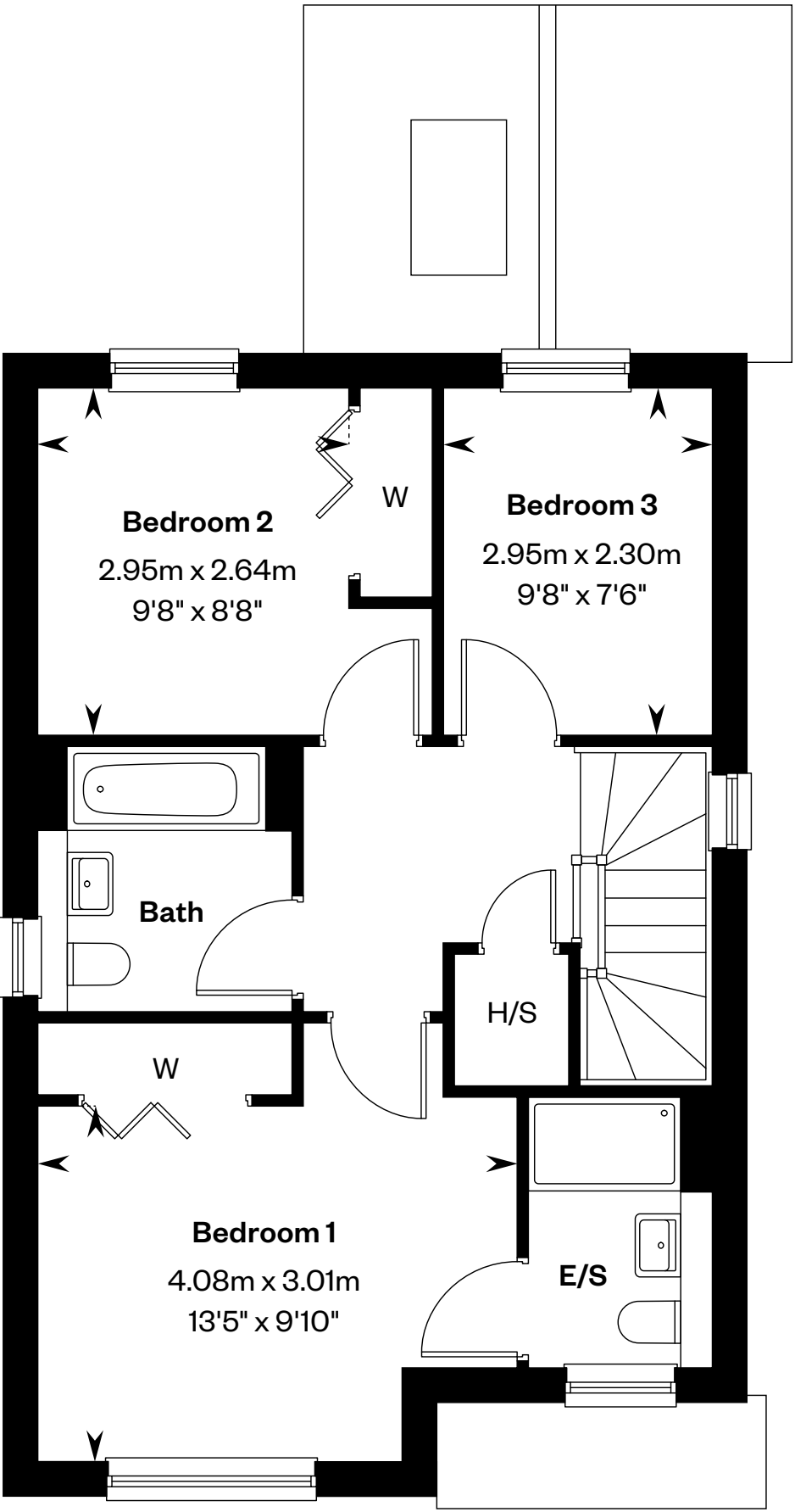
3 bedroom detached home

Plots 419, 443, 446, 449, 451 & 458 – as shown


Plots 447 & 491 – handed



Ground floor



First floor

E/S: En-Suite. H/S: Heating source cupboard. St: Store cupboard. W: Wardrobe. : Roof light/velux window.

IMPORTANT NOTIOE TO CUSTOMERS: The Consumer Protection from Unfair Trading Regulations 2008. Cala Homes (North) Limited operates a policy of continual product development and the specifications outlined in this brochure are indicative only. The computer generated images and photographs do not necessarily represent the actual finishings/elevation or treatments, landscaping, furnishings and fittings at this development. Information contained is accurate at date of publication on 02.05.25. See the main brochure for the full Consumer Protection statement.



The Gairloch

5 bedroom detached home

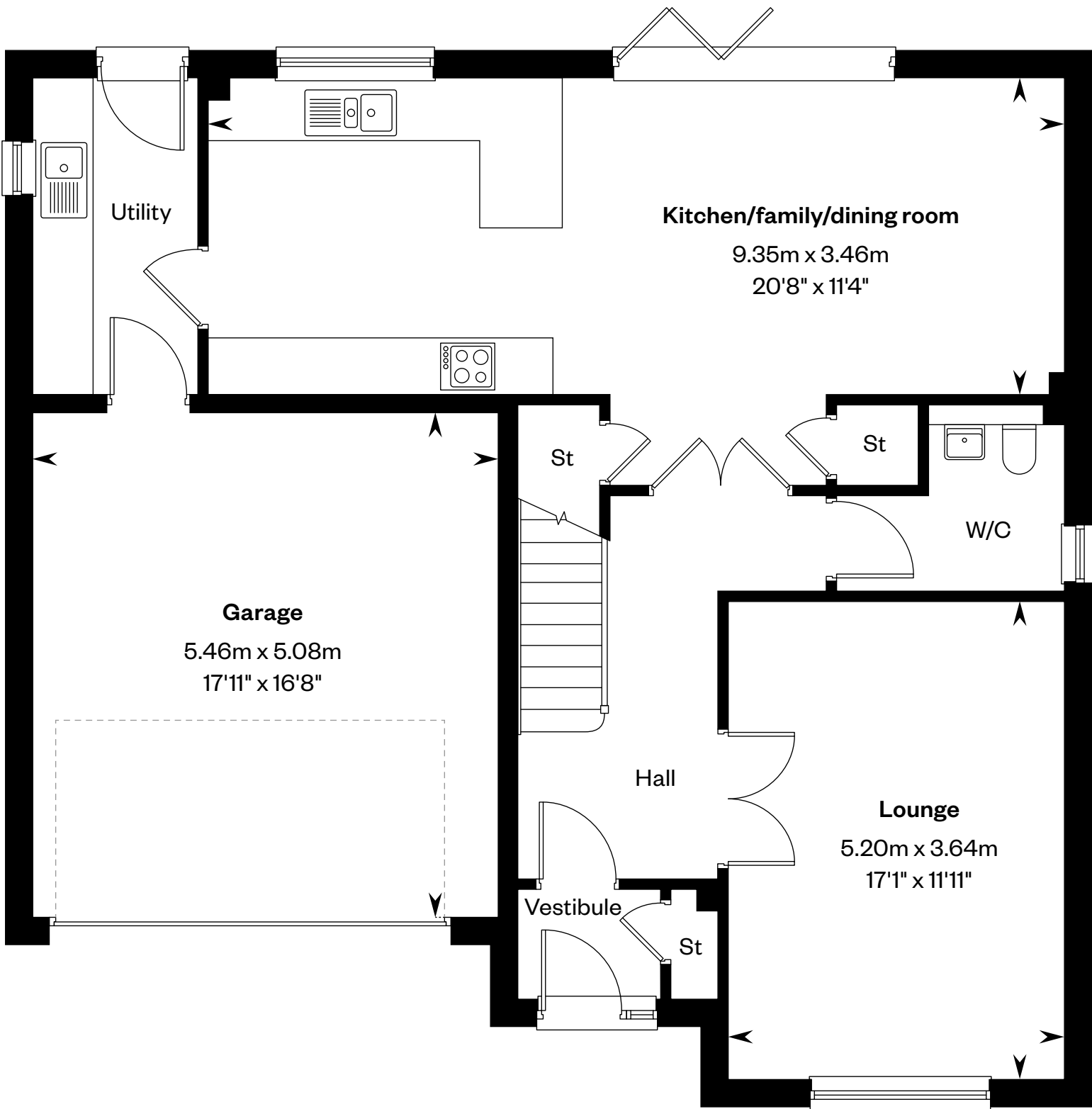


Computer generated image - The Gairloch

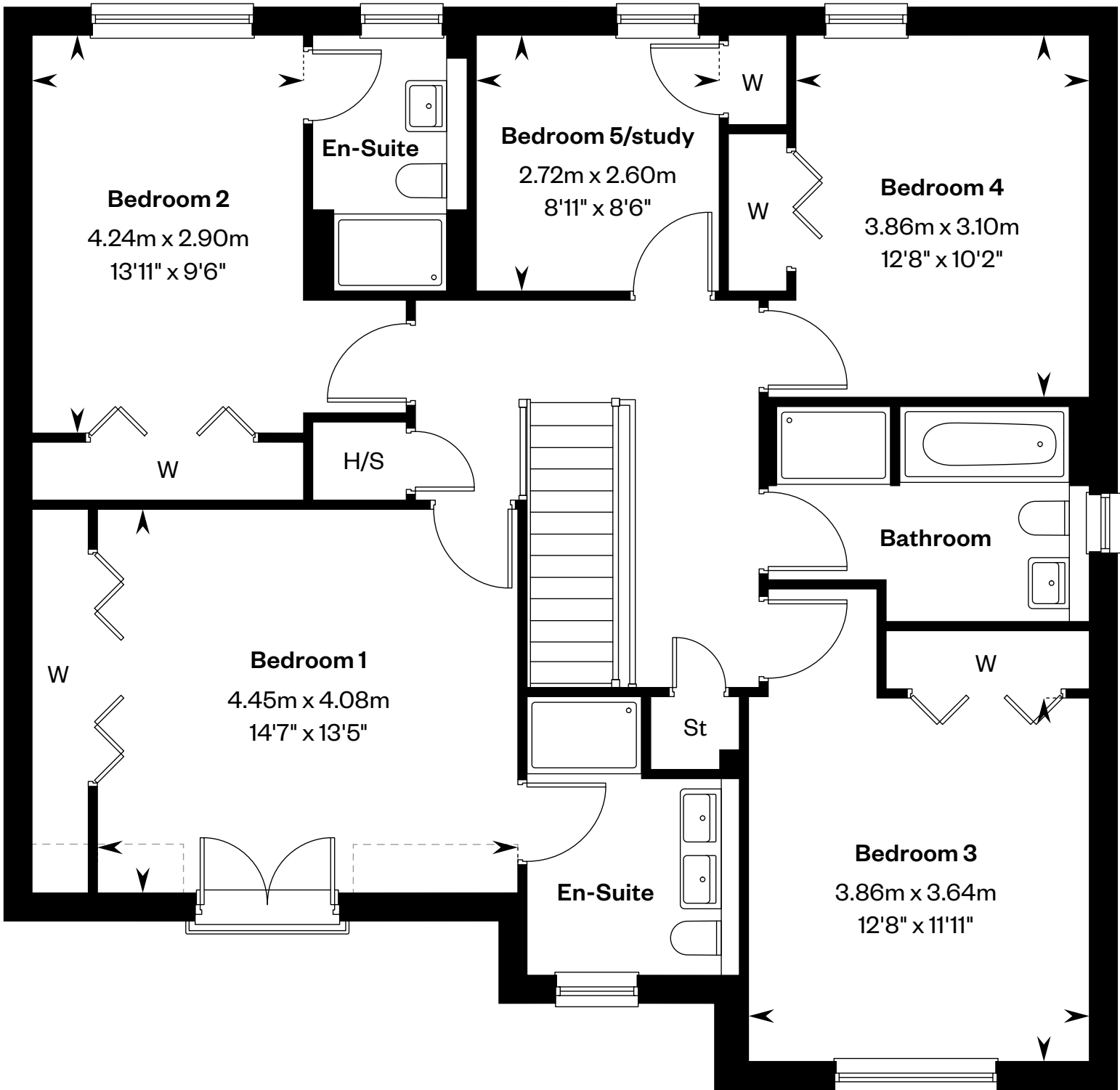
The Gairloch

5 bedroom detached home

Plot 474 – as shown



Ground floor



First floor

H/S: Heating source cupboard. St: Store cupboard. W: Wardrobe. -----: Dotted lines denote reduced head height.

IMPORTANT NOTIOE TO CUSTOMERS: The Consumer Protection from Unfair Trading Regulations 2008. Cala Homes (North) Limited operates a policy of continual product development and the specifications outlined in this brochure are indicative only. The computer generated images and photographs do not necessarily represent the actual finishings/elevation or treatments, landscaping, furnishings and fittings at this development. Information contained is accurate at date of publication on 02.05.25. See the main brochure for the full Consumer Protection statement.



The Garvie

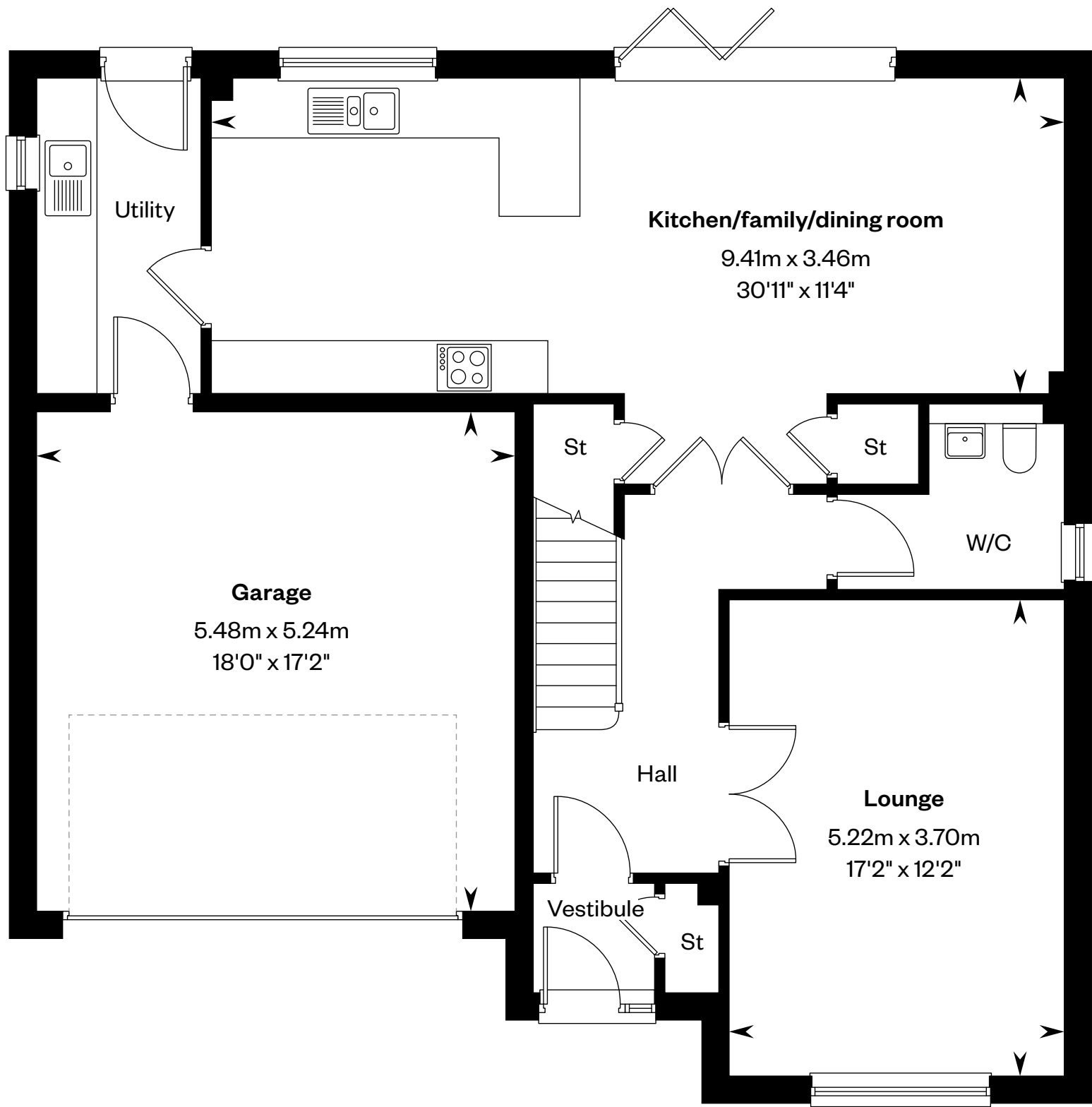
5 bedroom detached home



The Garvie

5 bedroom detached home

Plots 434, 438 & 440 – as shown



Ground floor



First floor

H/S: Heating source cupboard. St: Store cupboard. W: Wardrobe. - - - - : Dotted lines denote reduced head height.

IMPORTANT NOTIOE TO CUSTOMERS: The Consumer Protection from Unfair Trading Regulations 2008. Cala Homes (North) Limited operates a policy of continual product development and the specifications outlined in this brochure are indicative only. The computer generated images and photographs do not necessarily represent the actual finishings/elevation or treatments, landscaping, furnishings and fittings at this development. Information contained is accurate at date of publication on 02.05.25. See the main brochure for the full Consumer Protection statement.



The Laurel

4 bedroom detached home



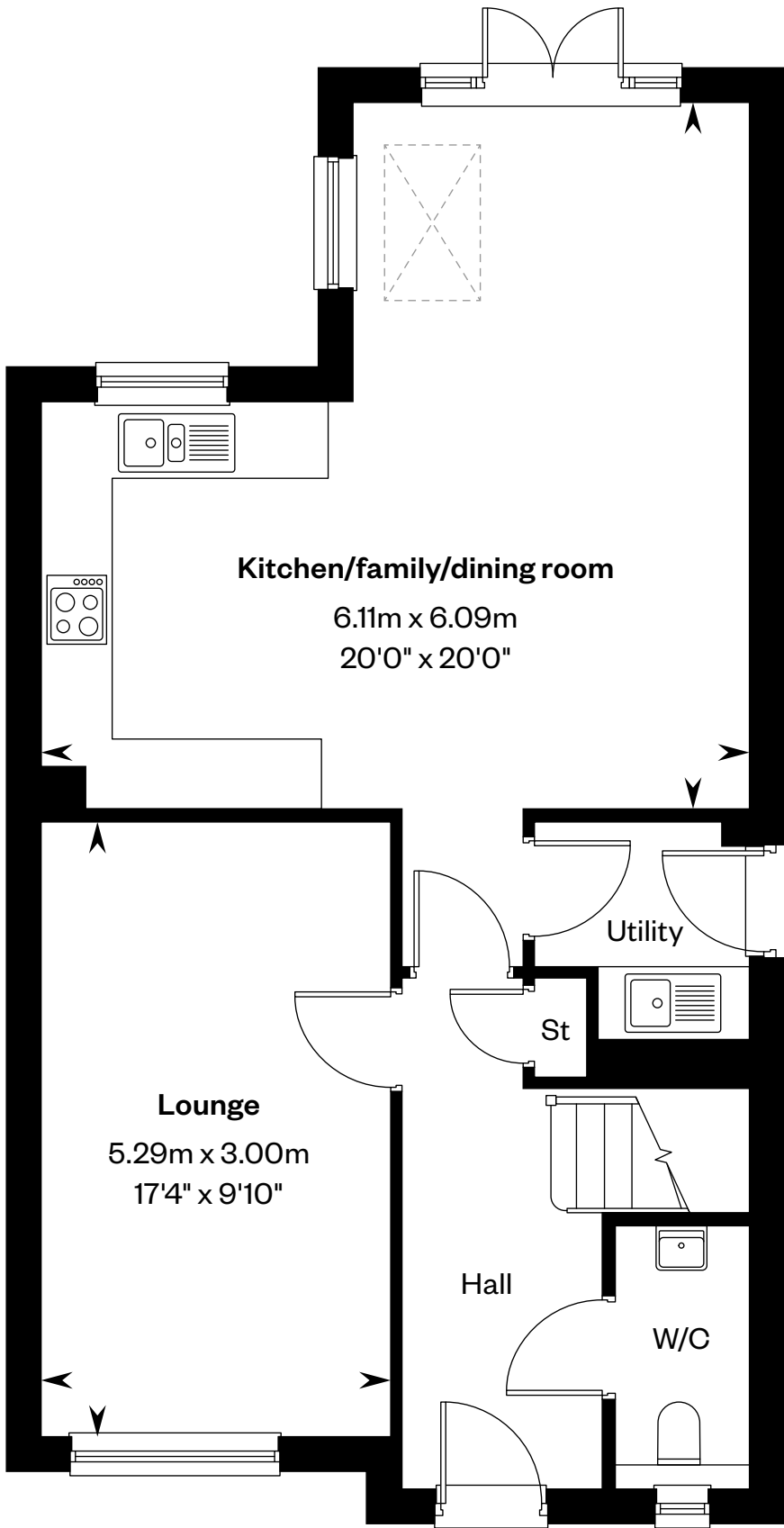
Computer generated image - The Laurel

The Laurel

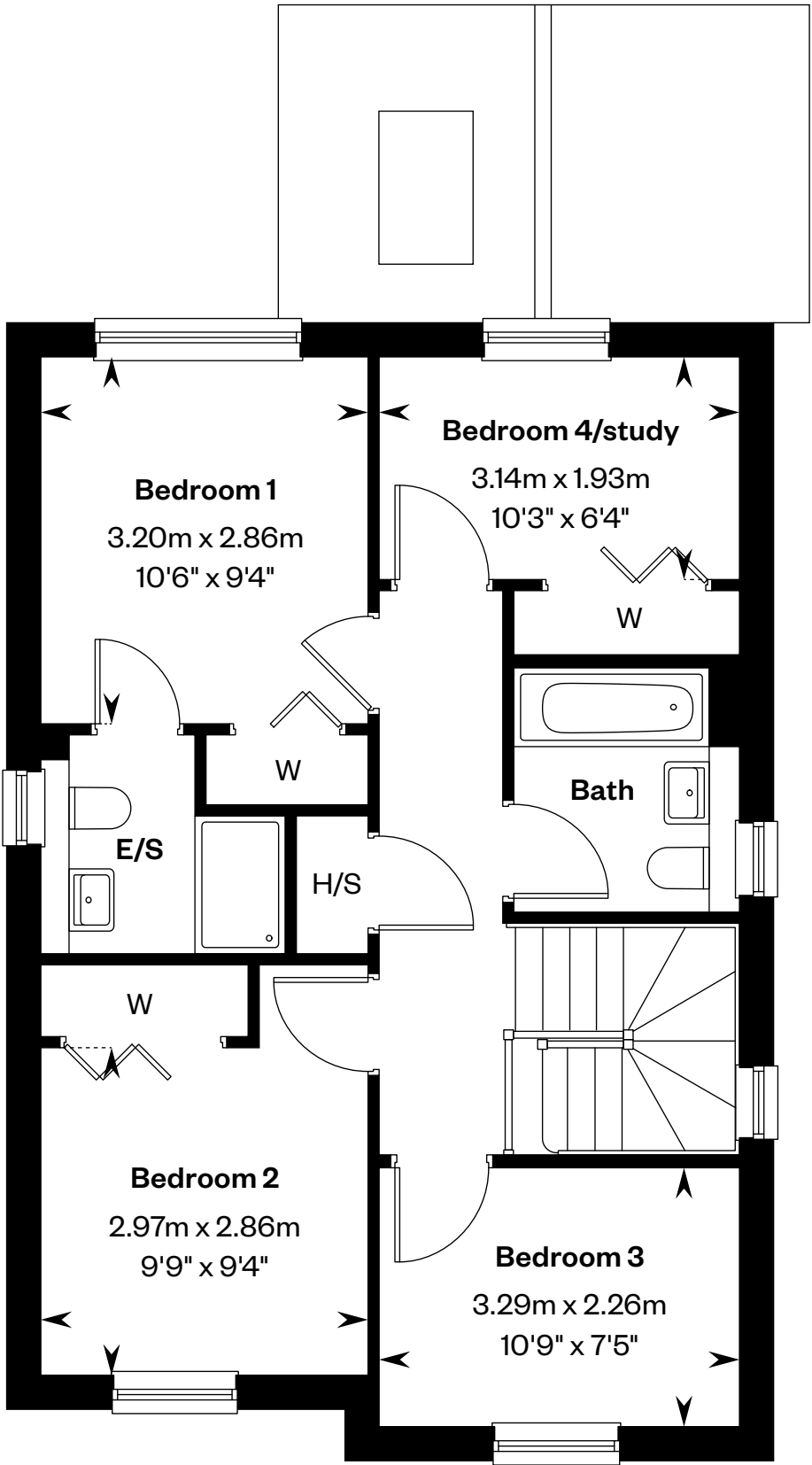
4 bedroom detached home

Plots 413, 416, 444, 457, 461 & 489 – as shown


Plots 453 & 461 – handed



Ground floor



First floor

H/S: Heating source cupboard. St: Store cupboard. W: Wardrobe. : Roof light/velux window.

IMPORTANT NOTICE TO CUSTOMERS: The Consumer Protection from Unfair Trading Regulations 2008. Cala Homes (North) Limited operates a policy of continual product development and the specifications outlined in this brochure are indicative only. The computer generated images and photographs do not necessarily represent the actual finishings/elevation or treatments, landscaping, furnishings and fittings at this development. Information contained is accurate at date of publication on 02.05.25. See the main brochure for the full Consumer Protection statement.



The Lowther

5 bedroom detached home

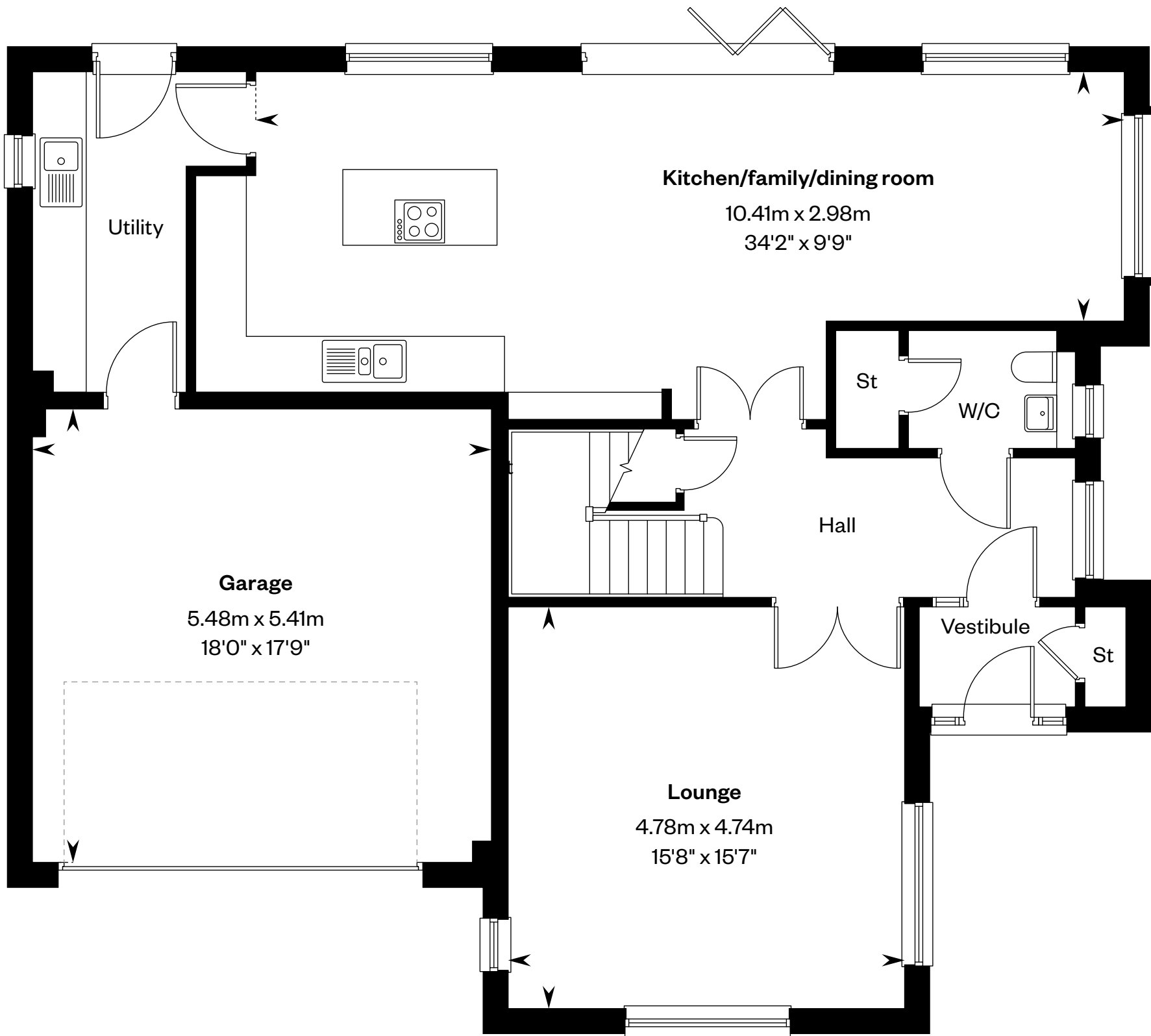


Computer generated image - The Lowther

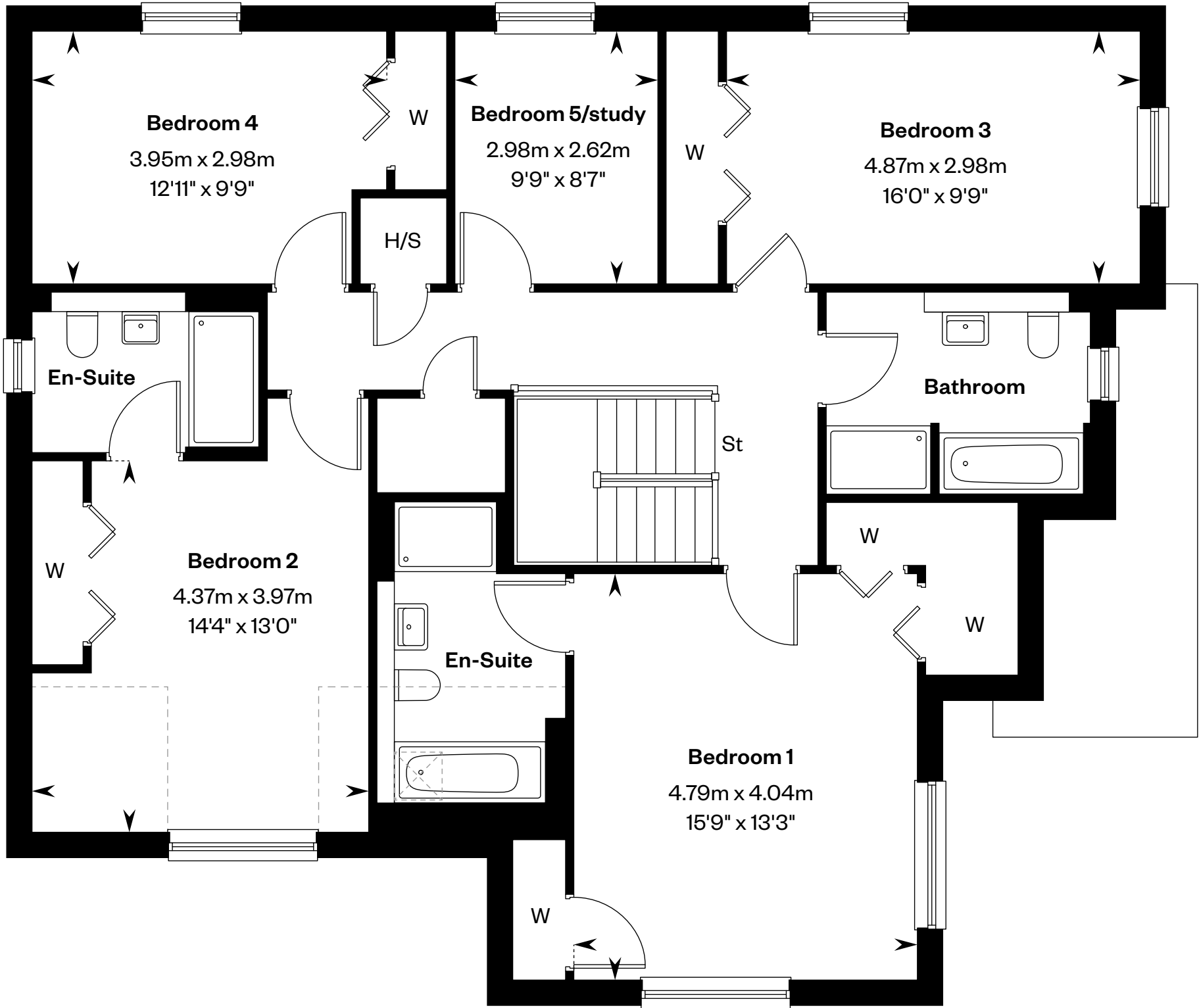
The Lowther

5 bedroom detached home


Plot 441 – as shown



Ground floor



First floor

H/S: Heating source cupboard. St: Store cupboard. W: Wardrobe. : Roof light/velux window. - - -: Dotted lines denote reduced head height.

IMPORTANT NOTICE TO CUSTOMERS: The Consumer Protection from Unfair Trading Regulations 2008. Cala Homes (North) Limited operates a policy of continual product development and the specifications outlined in this brochure are indicative only. The computer generated images and photographs do not necessarily represent the actual finishings/elevation or treatments, landscaping, furnishings and fittings at this development. Information contained is accurate at date of publication on 02.05.25. See the main brochure for the full Consumer Protection statement.



The Poplar

4 bedroom detached home



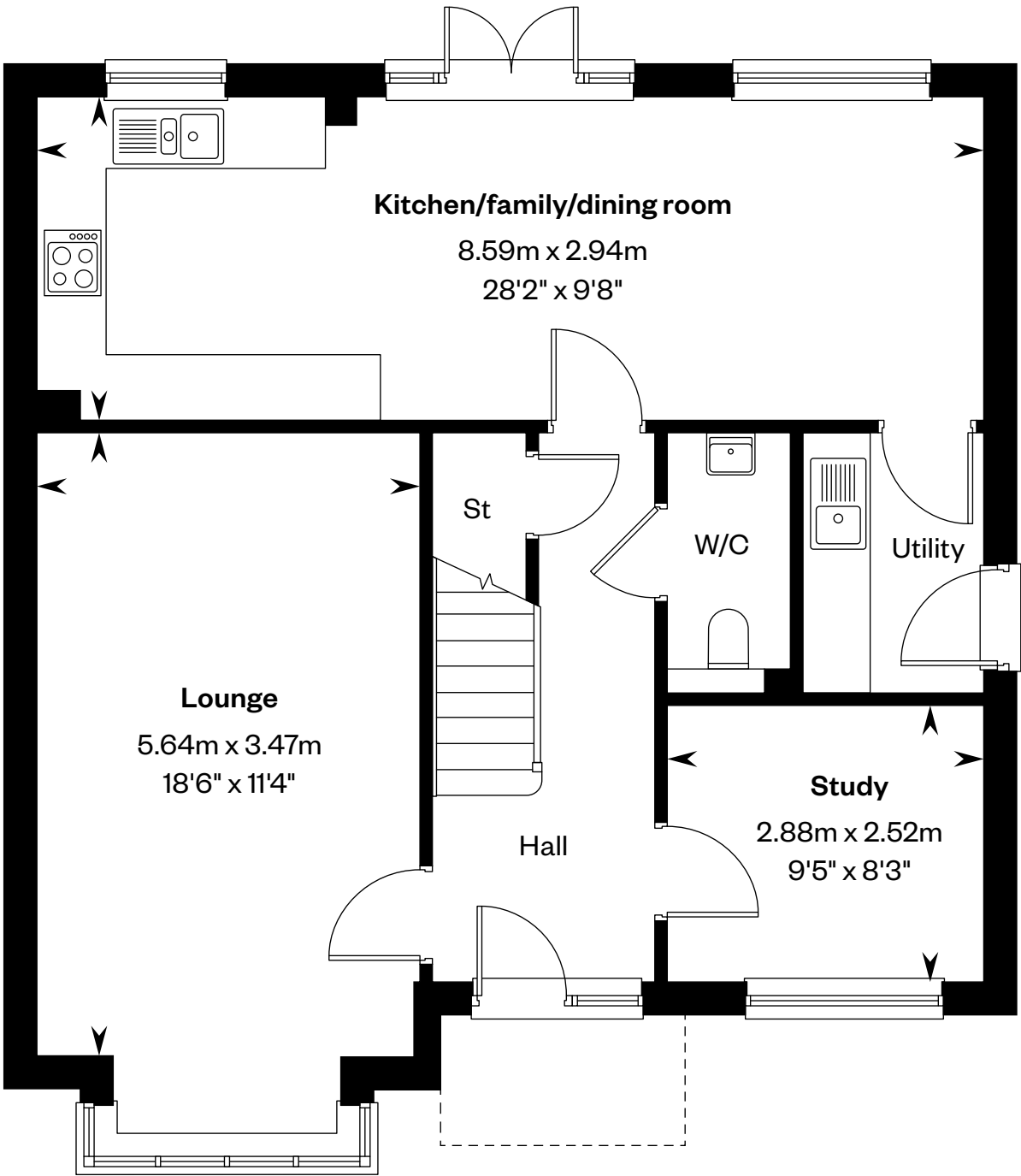
Computer generated image - The Poplar

The Poplar

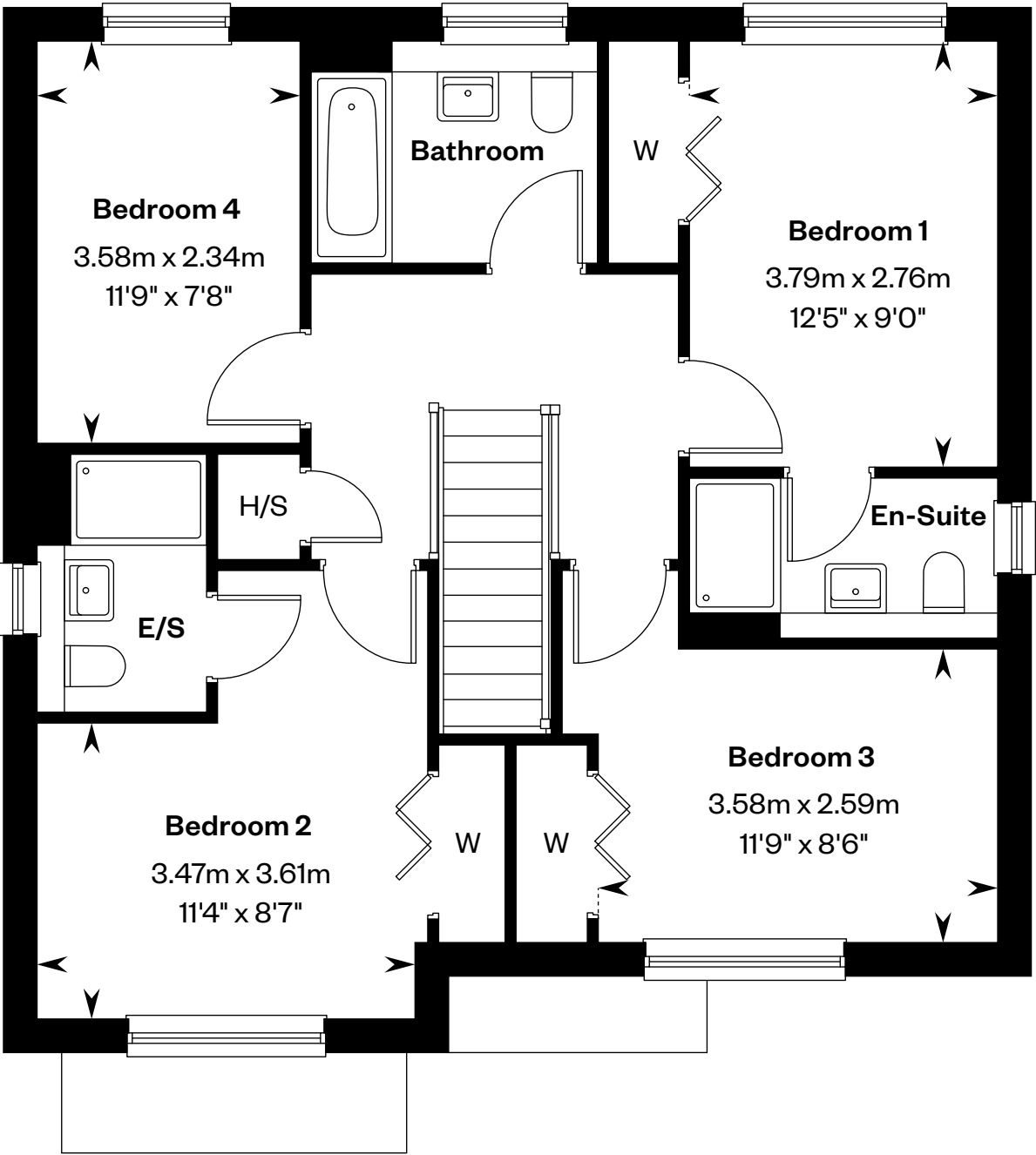
4 bedroom detached home

Plots 412, 415, 418, 445, 448, 450,
452 & 455 – as shown

Plots 456 & 459 – handed



Ground floor



First floor

E/S: En-Suite. H/S: Heating source cupboard. St: Store cupboard. W: Wardrobe.

IMPORTANT NOTIOE TO CUSTOMERS: The Consumer Protection from Unfair Trading Regulations 2008. Cala Homes (North) Limited operates a policy of continual product development and the specifications outlined in this brochure are indicative only. The computer generated images and photographs do not necessarily represent the actual finishings/elevation or treatments, landscaping, furnishings and fittings at this development. Information contained is accurate at date of publication on 02.05.25. See the main brochure for the full Consumer Protection statement.



The Rowan

4 bedroom detached home



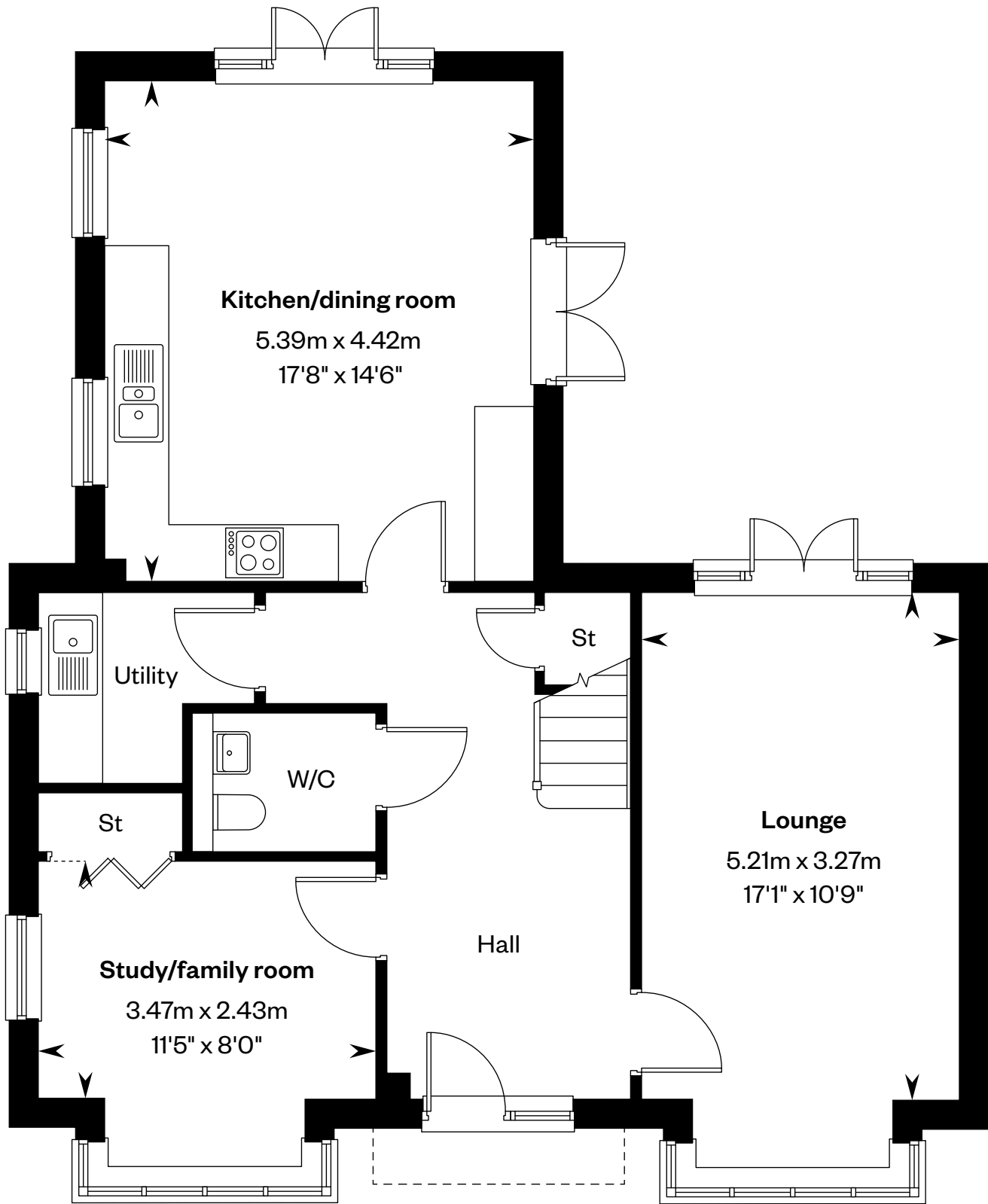
Computer generated image - The Rowan

The Rowan

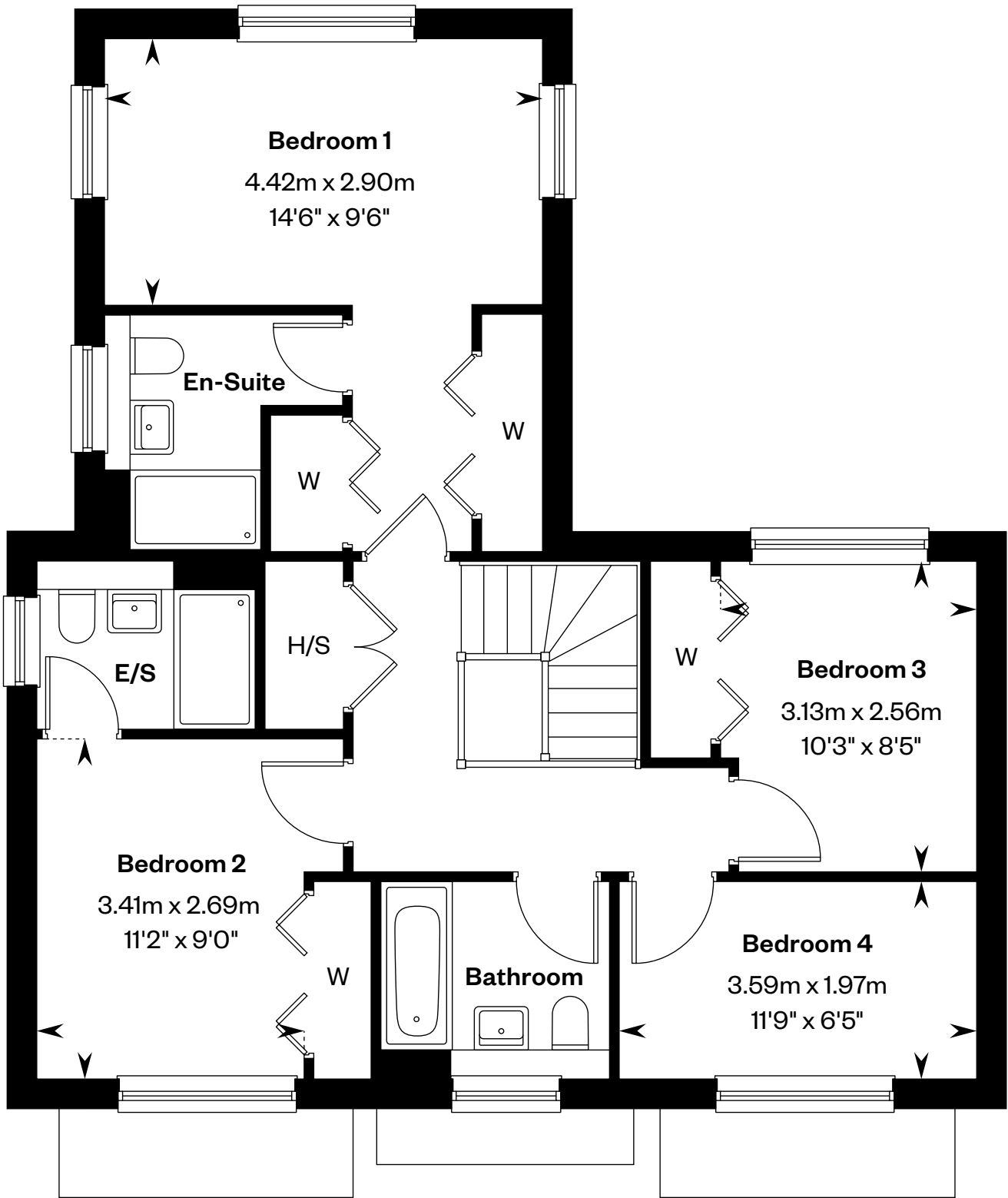
4 bedroom detached home

Plot 442 – as shown

Plots 454 & 460 – handed



Ground floor



First floor

E/S: En-Suite. H/S: Heating source cupboard. St: Store cupboard. W: Wardrobe.

IMPORTANT NOTIOE TO CUSTOMERS: The Consumer Protection from Unfair Trading Regulations 2008. Cala Homes (North) Limited operates a policy of continual product development and the specifications outlined in this brochure are indicative only. The computer generated images and photographs do not necessarily represent the actual finishings/elevation or treatments, landscaping, furnishings and fittings at this development. Information contained is accurate at date of publication on 02.05.25. See the main brochure for the full Consumer Protection statement.