

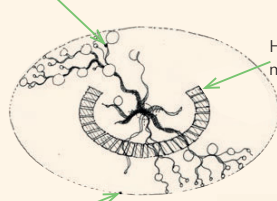
# The Meeting Maple



The natural surroundings of Kelvedon made it an attractive place to settle, dating right back to the pre-Roman British Celts, whose coins have been found locally. Trees were revered and some became natural focal points.

'The Meeting Maple' reflects this appreciation of trees, with its steel boughs forming a sheltering canopy over its seated gathering space and metal 'flowers of life' representing its foliage.

Radial section of metal branches.

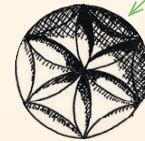


Perimeter of tree canopy 'Golden section ellipse'.

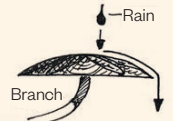
Seating  
Hardwood on metal frames.

Three dimensional 'pressed' Flower of Life components to represent tree foliage.

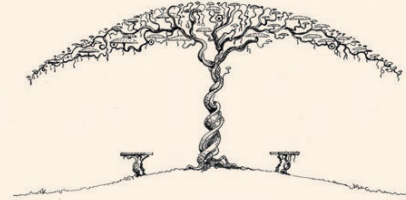
Multiple diameters 50, 80, 130, 160mm



Seen from above



Side elevation



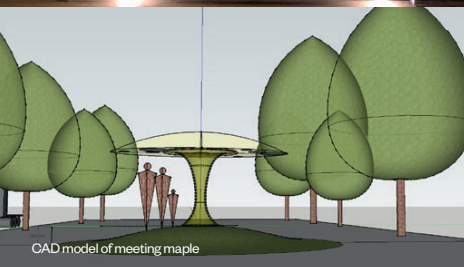
Canopy from above



World Tree at night



Golden Goose Tree at night



CAD model of meeting maple



St. Michaels Journey Garden at the RHS Malvern show