



# The Foxton with studio

3 bedroom end of terrace home  
with studio and garage



Computer Generated Image - The Foxton

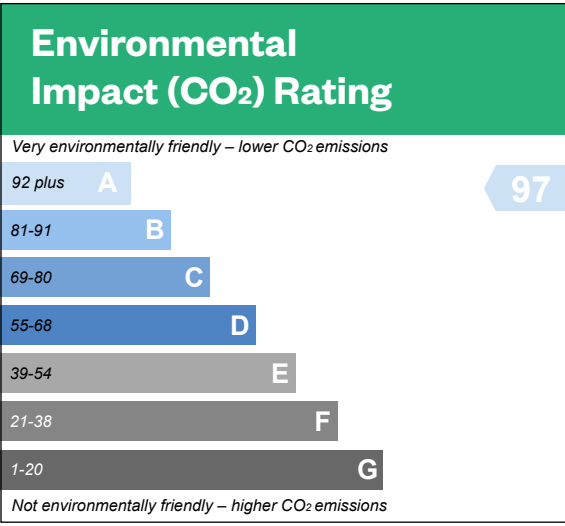
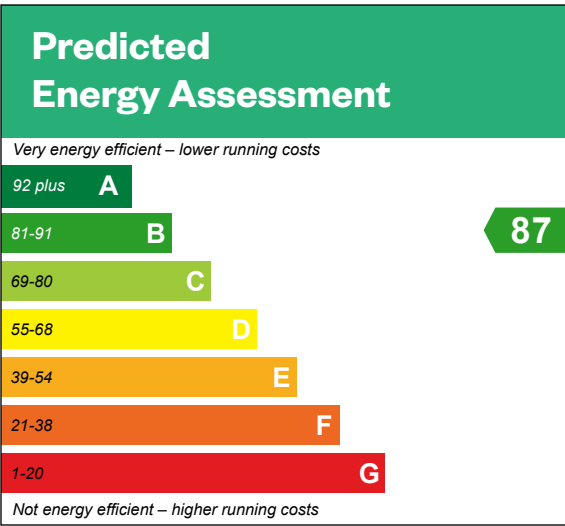


# The Foxton with studio

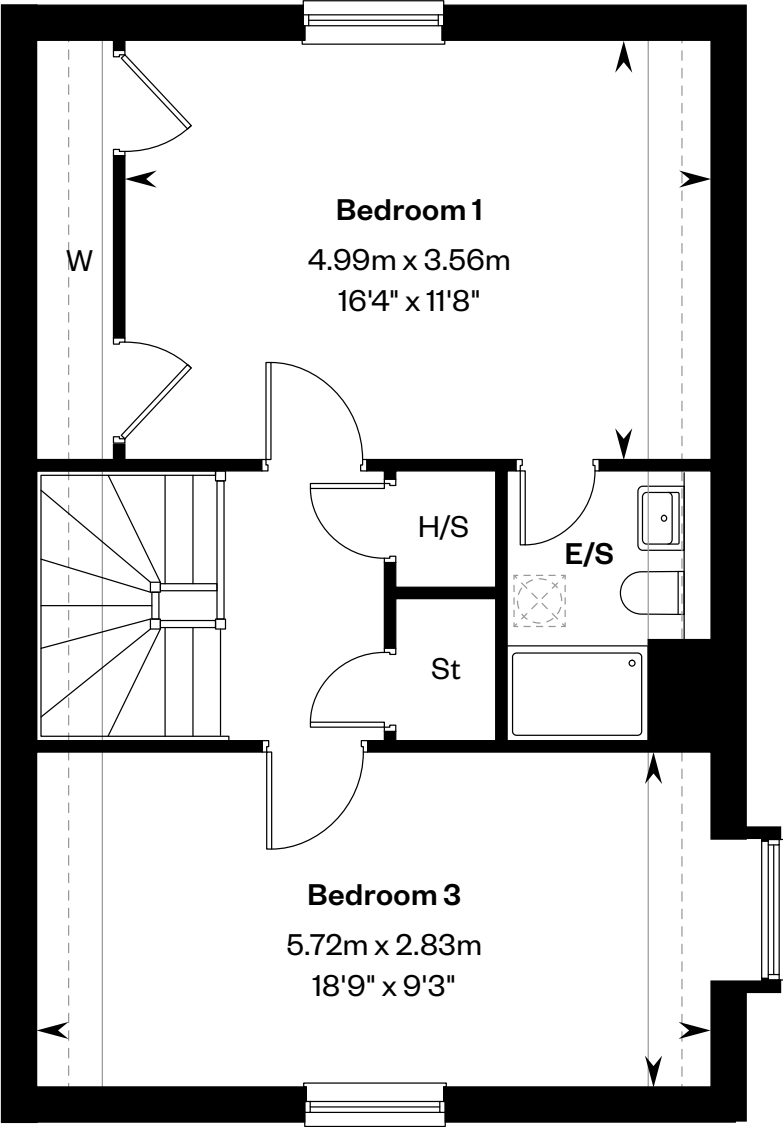
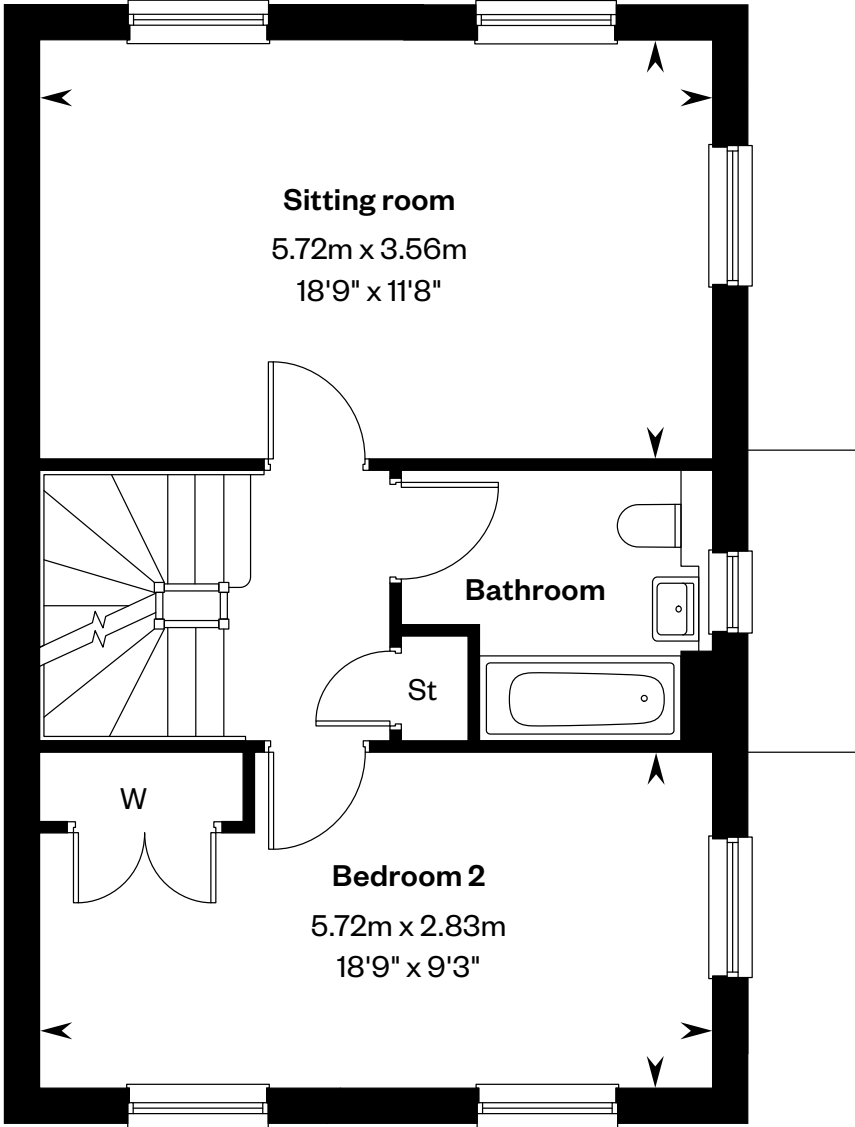
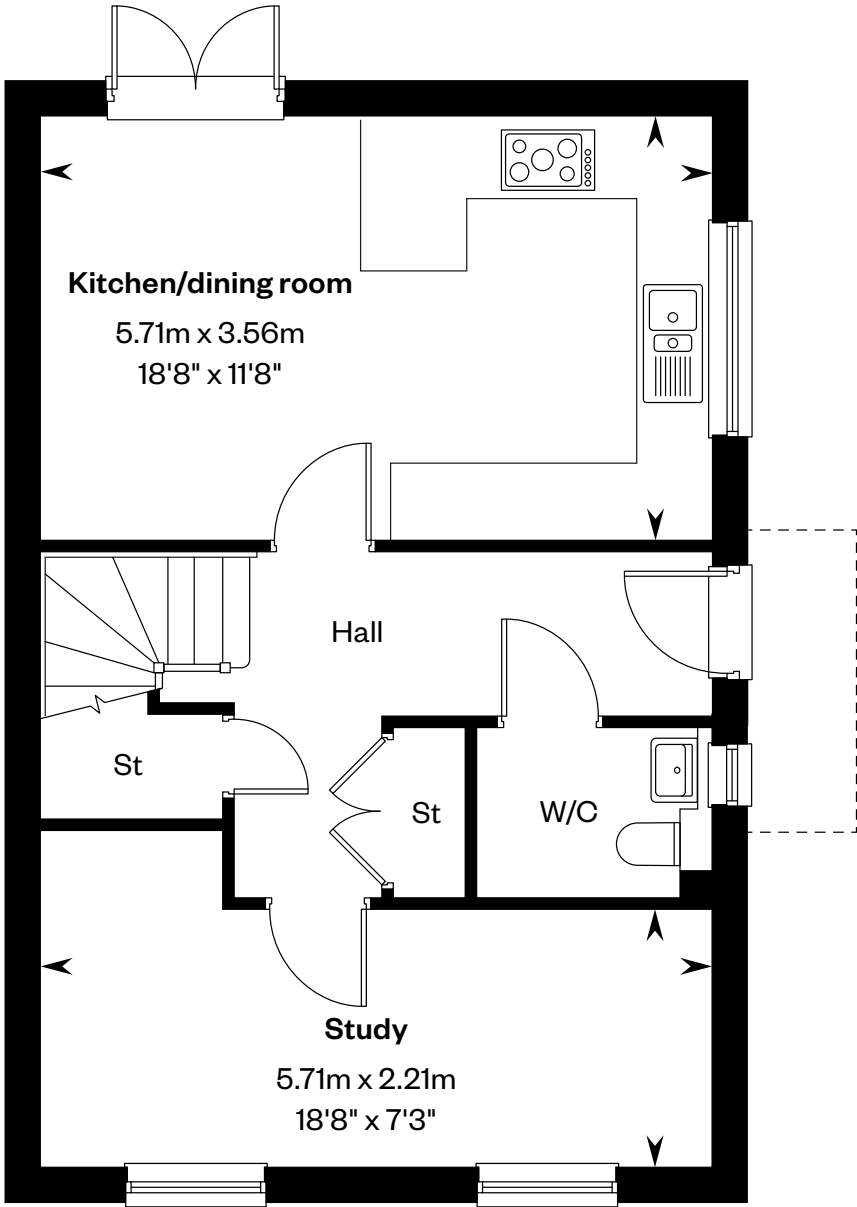
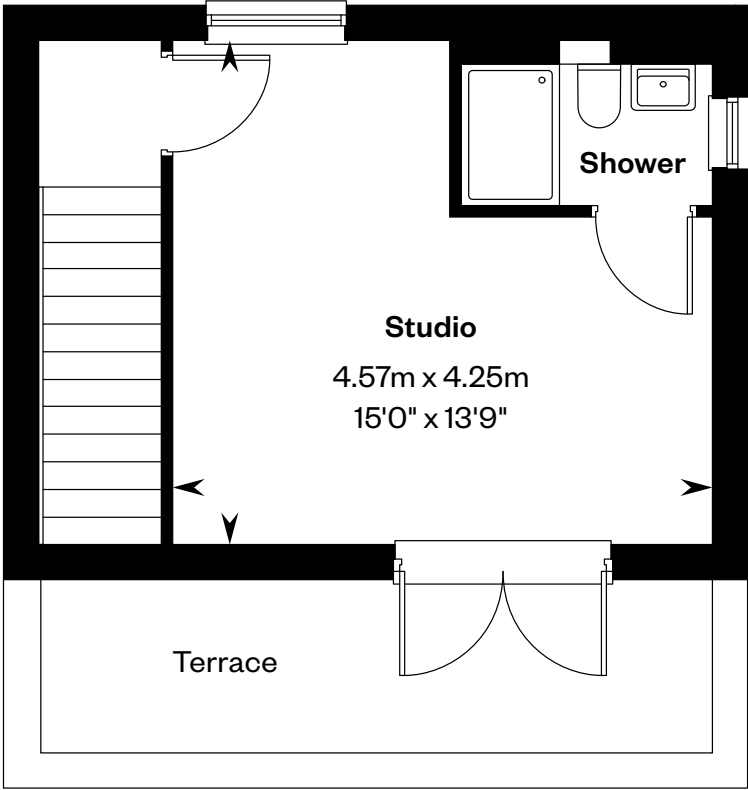
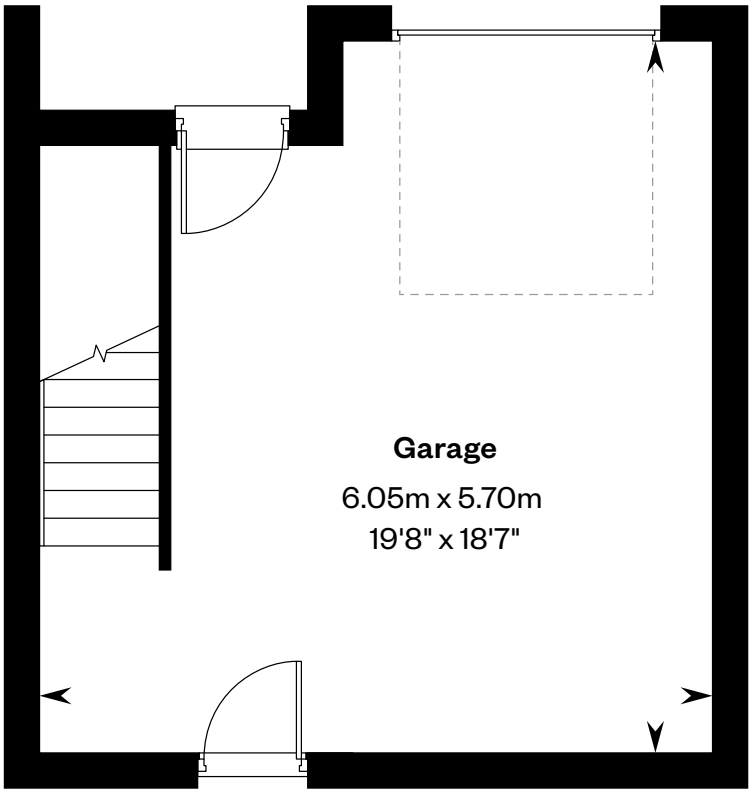
3 bedroom end of terrace home with studio and garage

Plot 1 – as shown

Plot 96 – handed



This is a Predicted Energy Assessment for properties that are incomplete. Once the property is completed, this rating will be updated and an official Energy Performance certificate will be created for the property.



Ground floor

First floor

Second floor

Please ask your Sales Consultant for further details.

H/S: Heating system cupboard. E/S: En-Suite. St: Store cupboard. W: Wardrobe. ☀: Sun tunnel. - - - - : Dotted lines denote reduced head height. — : Solid lines denote full head height.

IMPORTANT NOTICE TO CUSTOMERS: The Consumer Protection from Unfair Trading Regulations 2008. Cala Homes (North Home Counties) Limited operates a policy of continual product development and the specifications outlined in this brochure are indicative only. The computer generated images and photographs do not necessarily represent the actual finishings/ elevation or treatments, landscaping, furnishings and fittings at this development. Information contained is accurate at date of publication on 25.04.25. See the main brochure for the full Consumer Protection statement.