



Sheep Ley Apartments

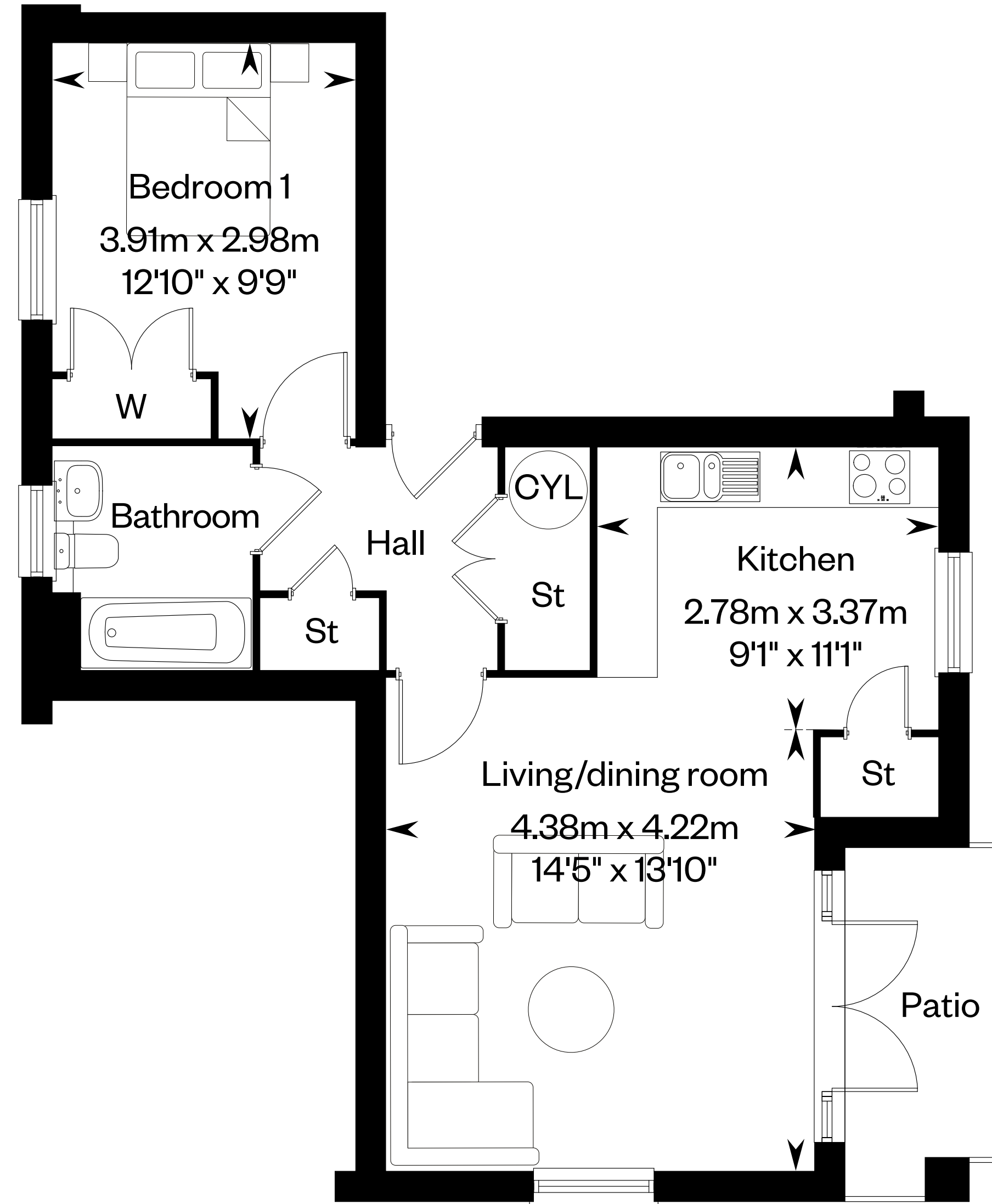
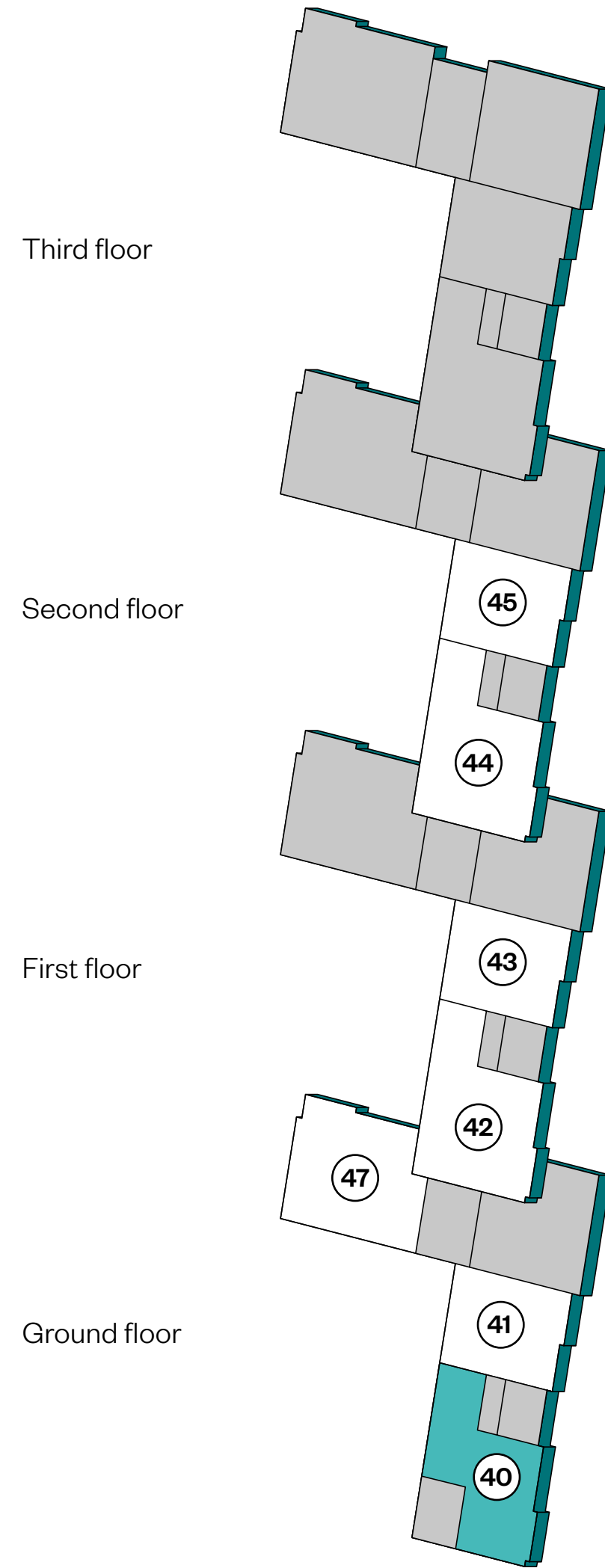
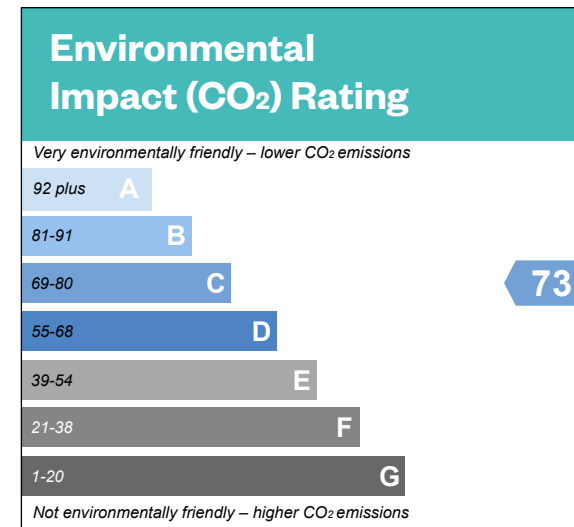
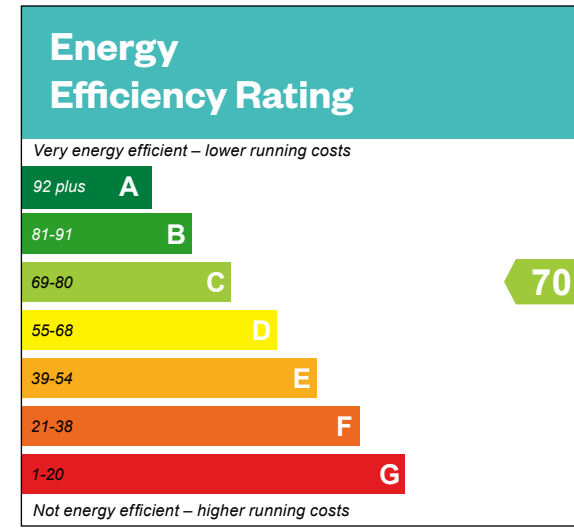
Discount Market Sale,
1 & 2 bedroom apartments



Computer generated image - Discount Market Apartments

Sheep Ley Apartments

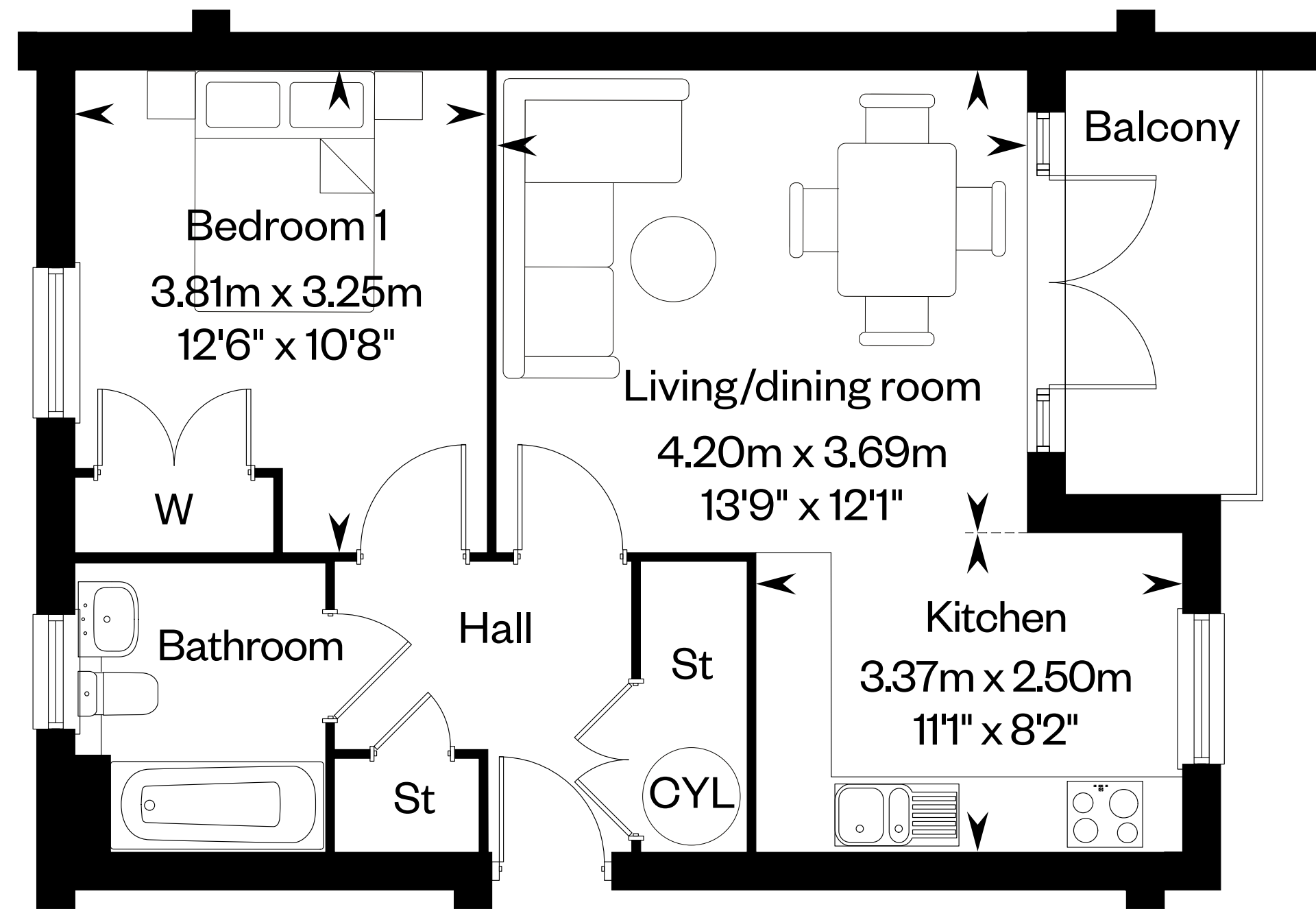
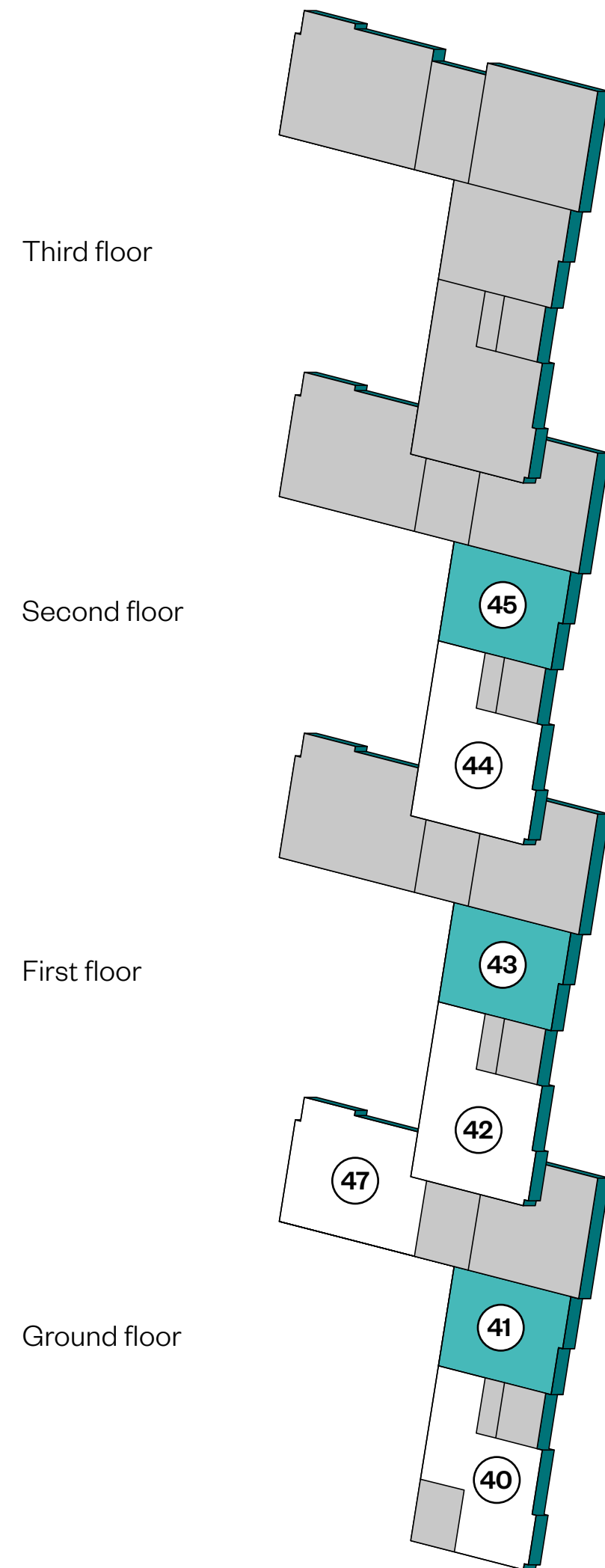
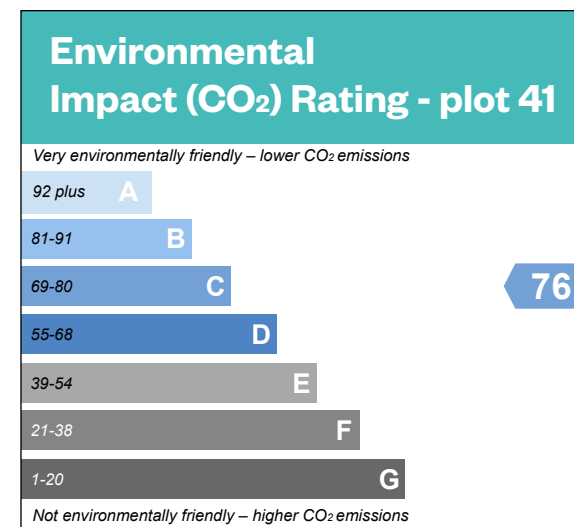
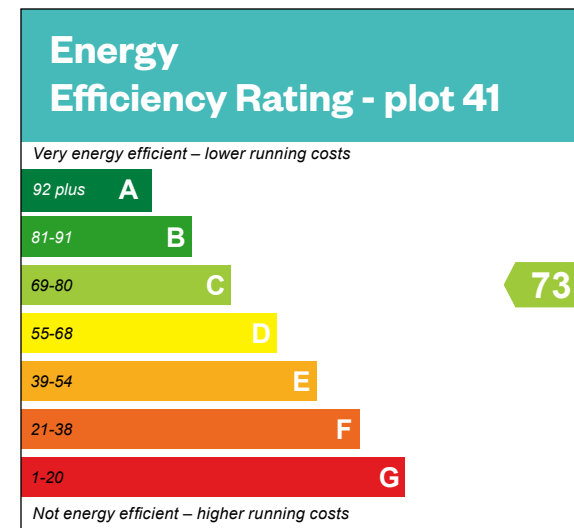
Plot 40



Please ask your Sales Consultant for further details. St: Storage cupboard. W: Wardrobe. CYL: Cylinder for Exhaust Air Heat Pump (Full Exhaust Air Heat Pump sits externally)

Sheep Ley Apartments

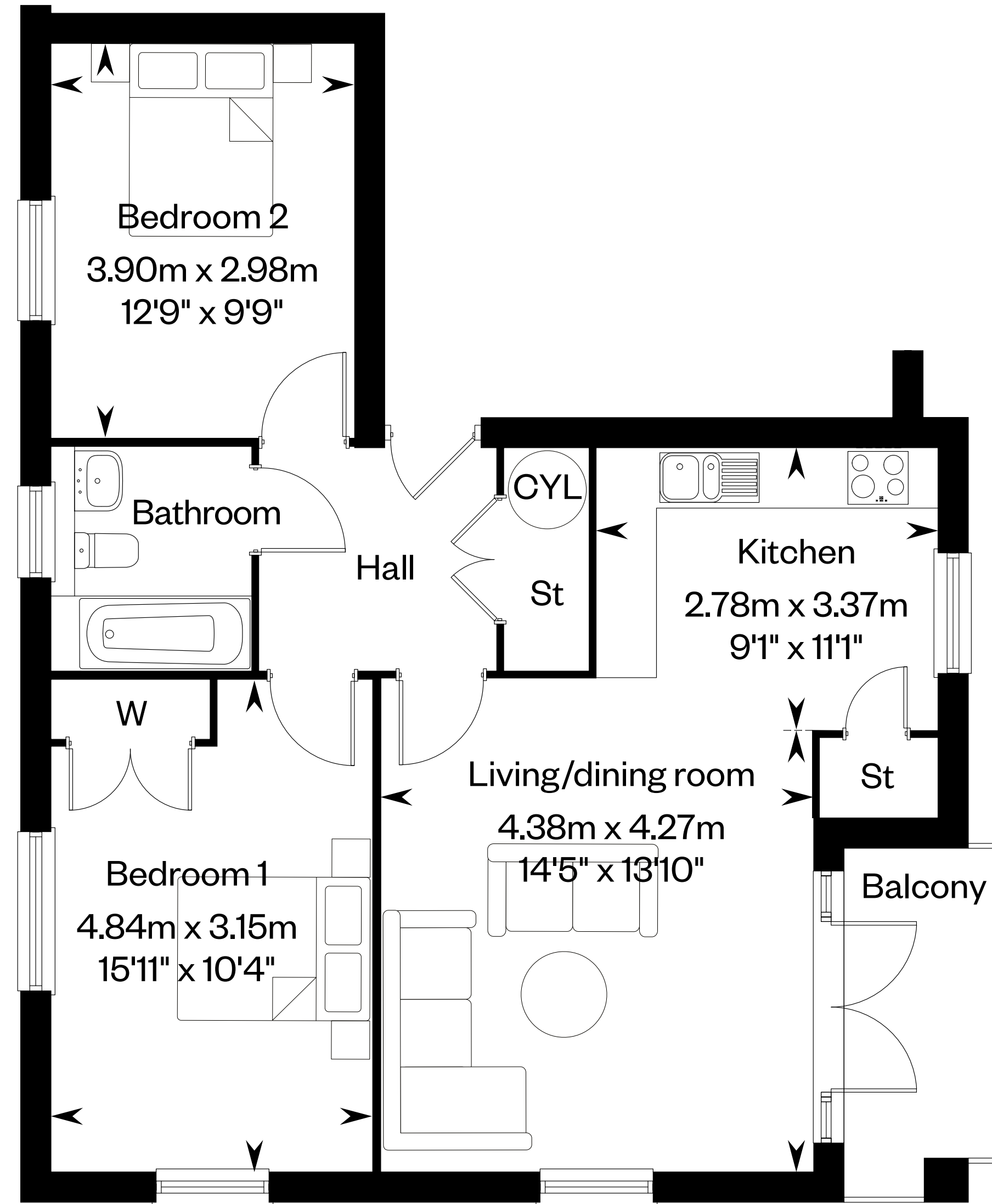
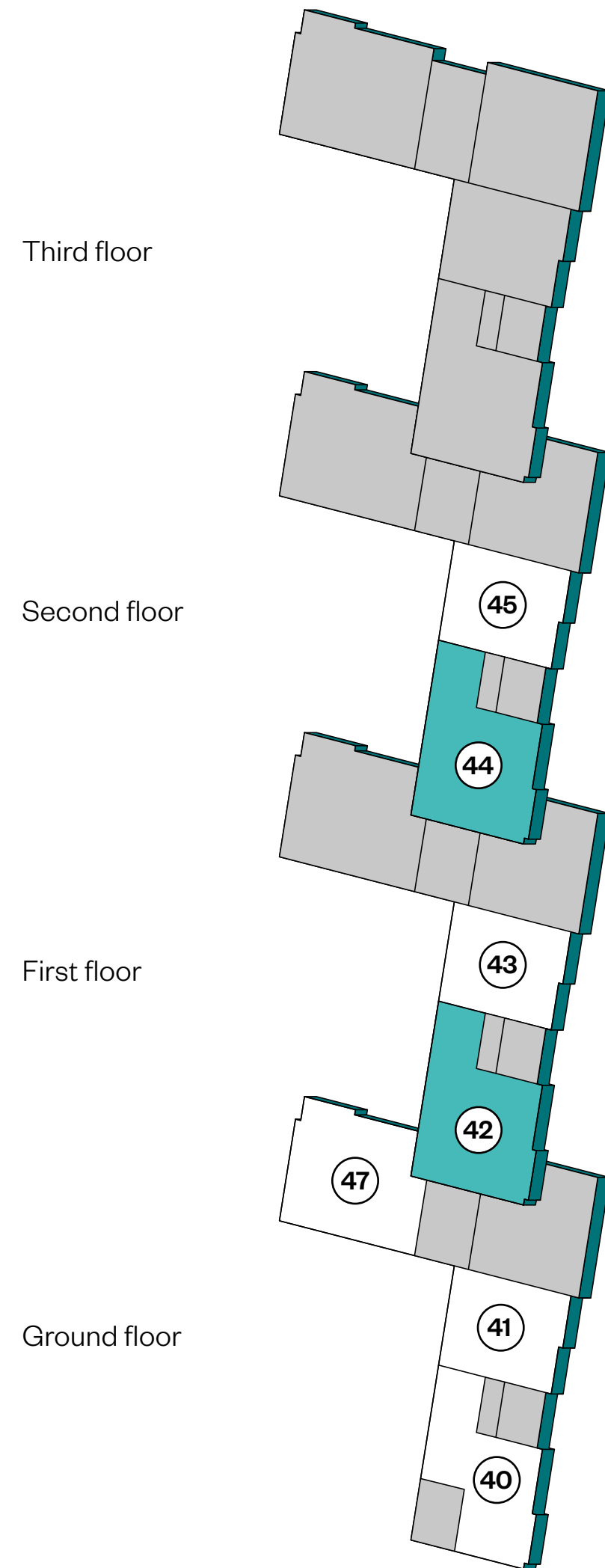
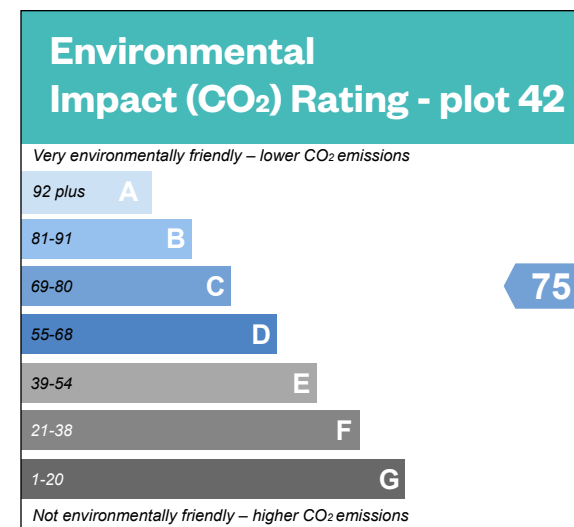
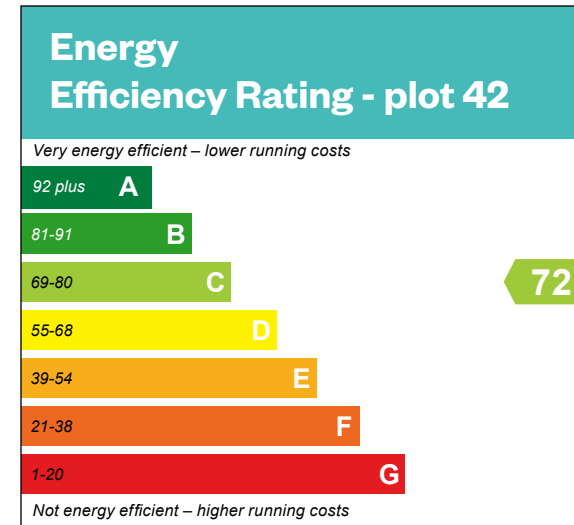
Plots 41, 43 & 45



Please ask your Sales Consultant for further details. St: Storage cupboard. W: Wardrobe. CYL: Cylinder for Exhaust Air Heat Pump (Full Exhaust Air Heat Pump sits externally) Patio to plot 41. Energy efficiency rating for plot 43 is 75 and for plot 45 is 74. Environmental impact rating for plot 43 & 45 is 77.

Sheep Ley Apartments

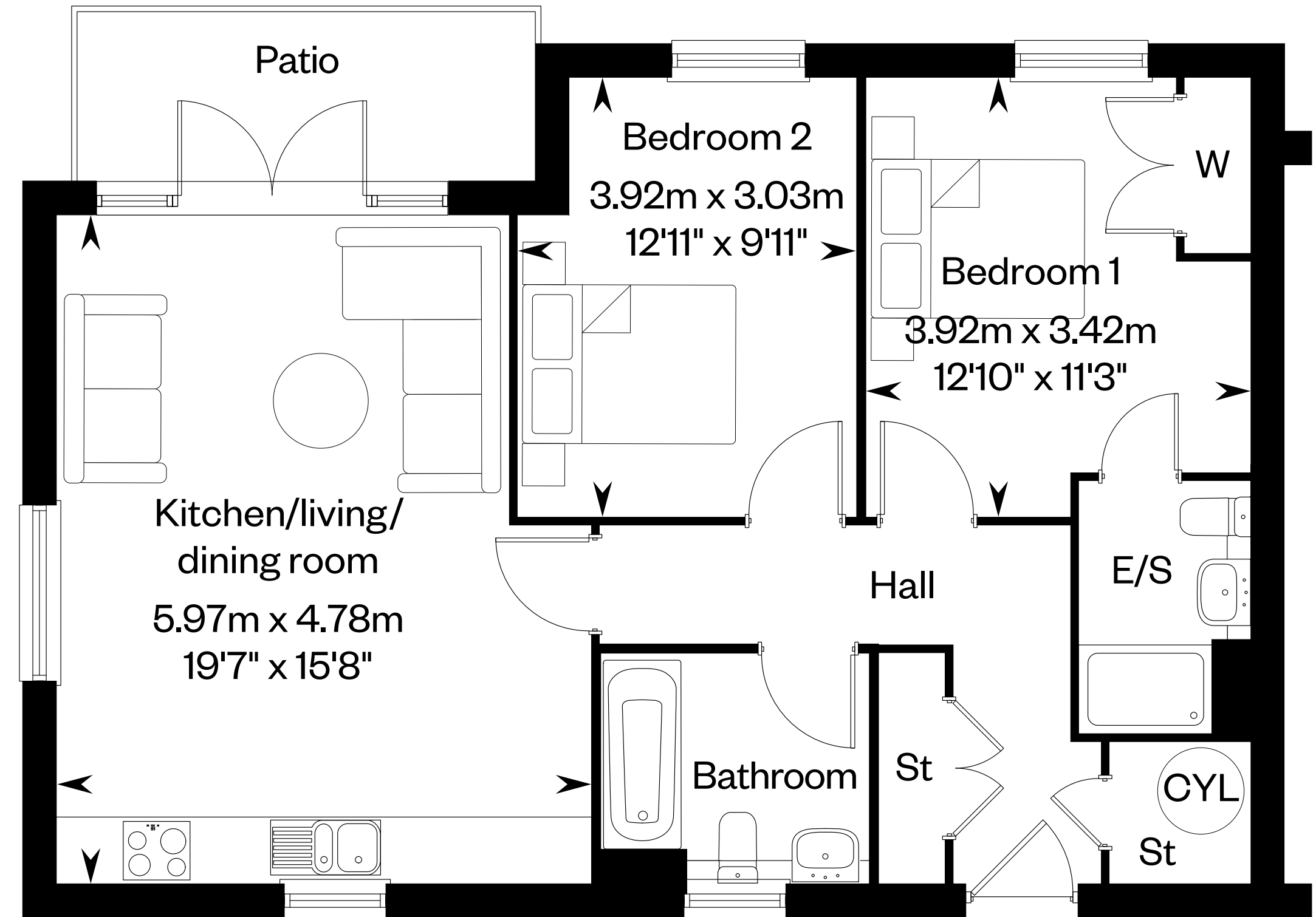
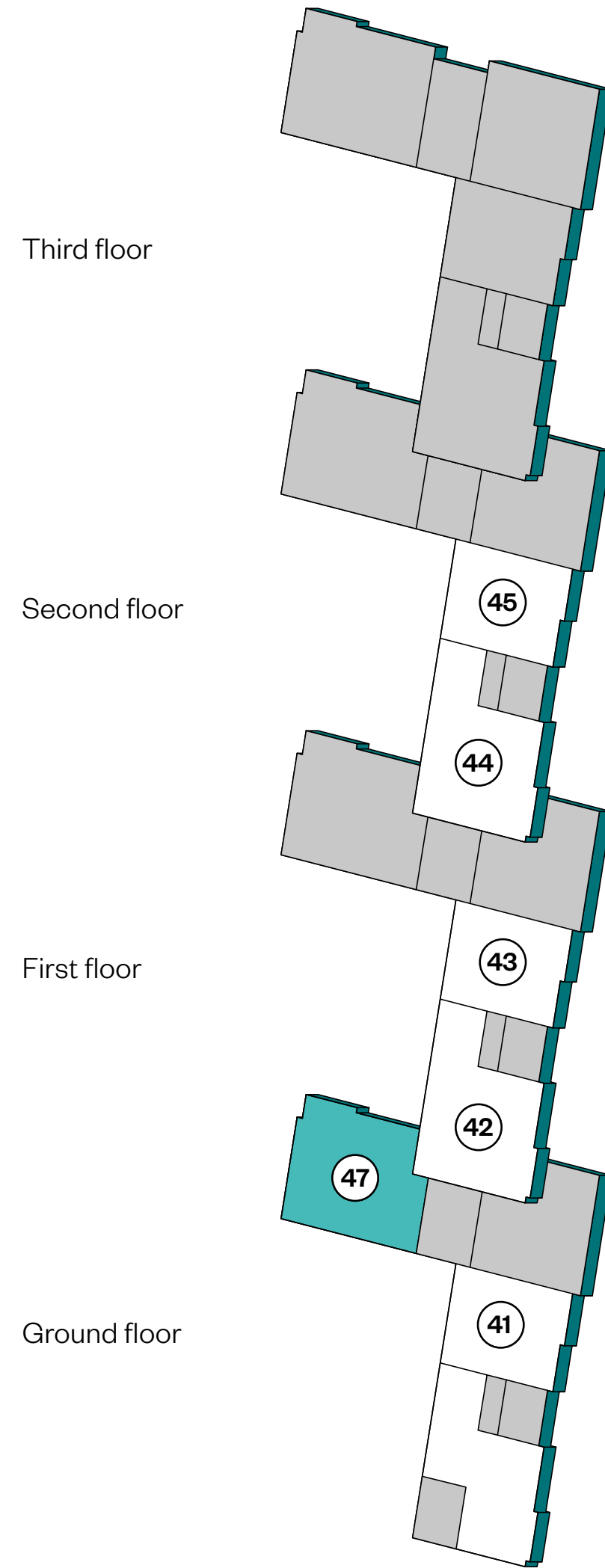
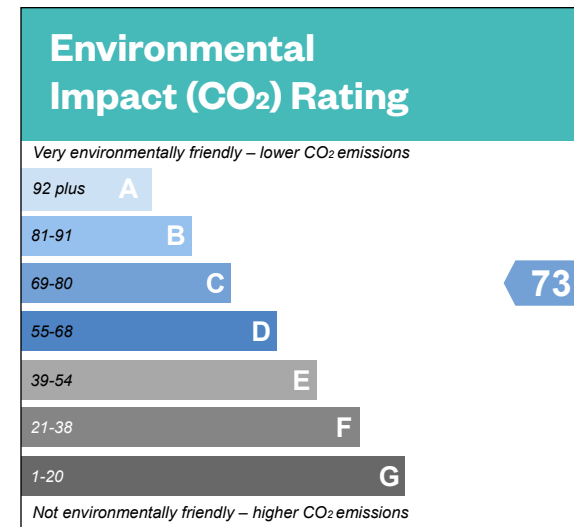
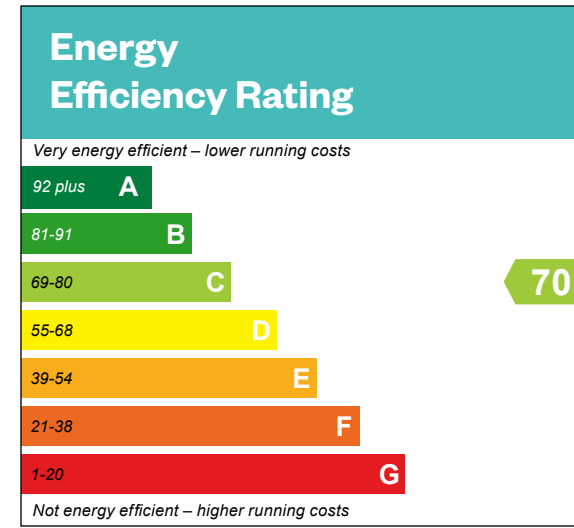
Plots 42 & 44



Please ask your Sales Consultant for further details. St: Storage cupboard. W: Wardrobe. CYL: Cylinder for Exhaust Air Heat Pump (Full Exhaust Air Heat Pump sits externally)
Energy efficiency rating for plot 44 is 73. Environmental impact rating for plot 44 is 76

Sheep Ley Apartments

Plot 47



Please ask your Sales Consultant for further details. St: Storage cupboard. W: Wardrobe. CYL: Cylinder for Exhaust Air Heat Pump (Full Exhaust Air Heat Pump sits externally)

IMPORTANT NOTICE TO CUSTOMERS: The Consumer Protection from Unfair Trading Regulations 2008. Cala Homes (North Home Counties) Limited operates a policy of continual product development and the specifications outlined in this brochure are indicative only. The computer generated images and photographs do not necessarily represent the actual finishings/ elevation or treatments, landscaping, furnishings and fittings at this development. Information contained is accurate at date of publication on 12.03.25. See the main brochure for the full Consumer Protection statement. This is a Predicted Energy Assessment for properties that are incomplete. Once the property is completed, this rating will be updated and an official Energy Performance Certificate will be created for the property.