

The Bargower

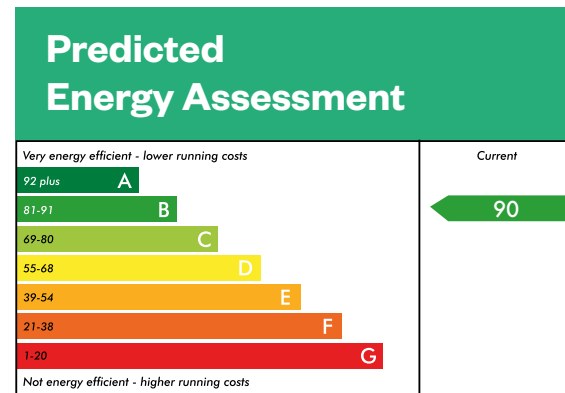
4 bedroom detached home



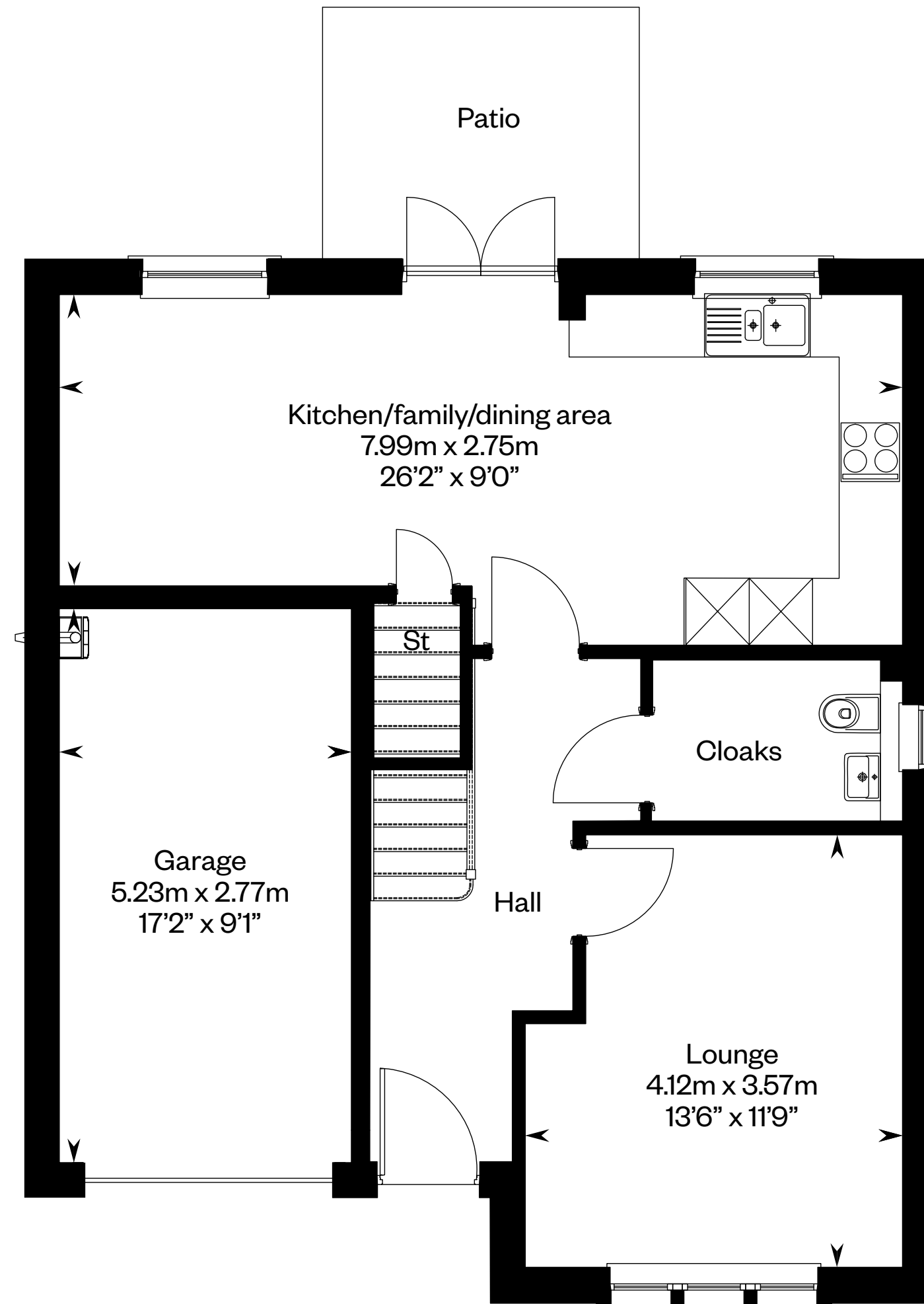
Computer generated image - The Bargower

The Bargower

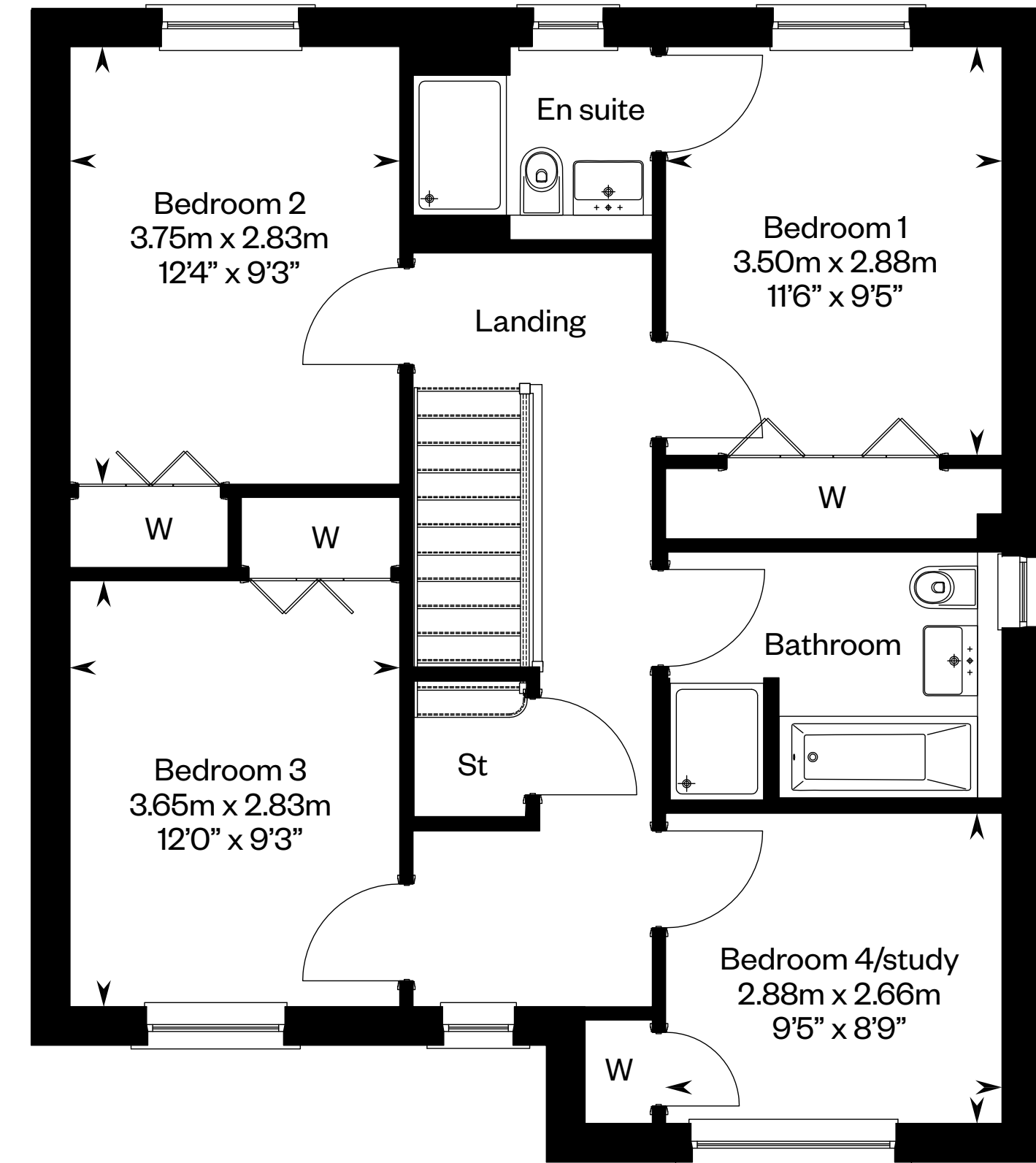
Plots 16, 17 – as shown



This is a Predicted Energy Assessment for properties that are incomplete. Once the property is completed, this rating will be updated and an official Energy Performance Certificate will be created for the property.



Ground floor



First floor

Please ask your Sales Consultant for further details. ST: Store cupboard. W: Wardrobe.

IMPORTANT NOTICE TO CUSTOMERS: The Consumer Protection from Unfair Trading Regulations 2008. Cala Homes (North) Limited operates a policy of continual product development and the specifications outlined in this brochure are indicative only. The computer generated images and photographs do not necessarily represent the actual finishings/elevation or treatments, landscaping, furnishings and fittings at this development. Information contained is accurate at date of publication on 08.08.23. See the main brochure for the full Consumer Protection statement.

The Barrie

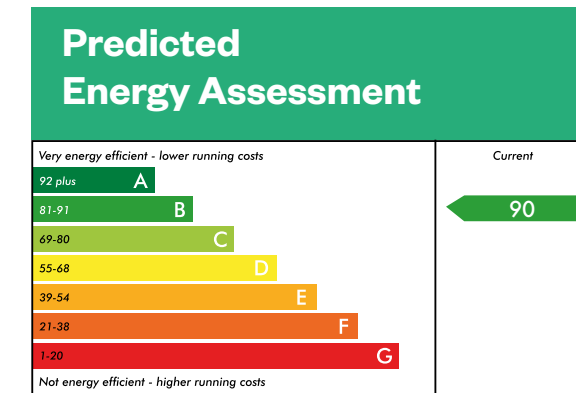
4 bedroom detached home



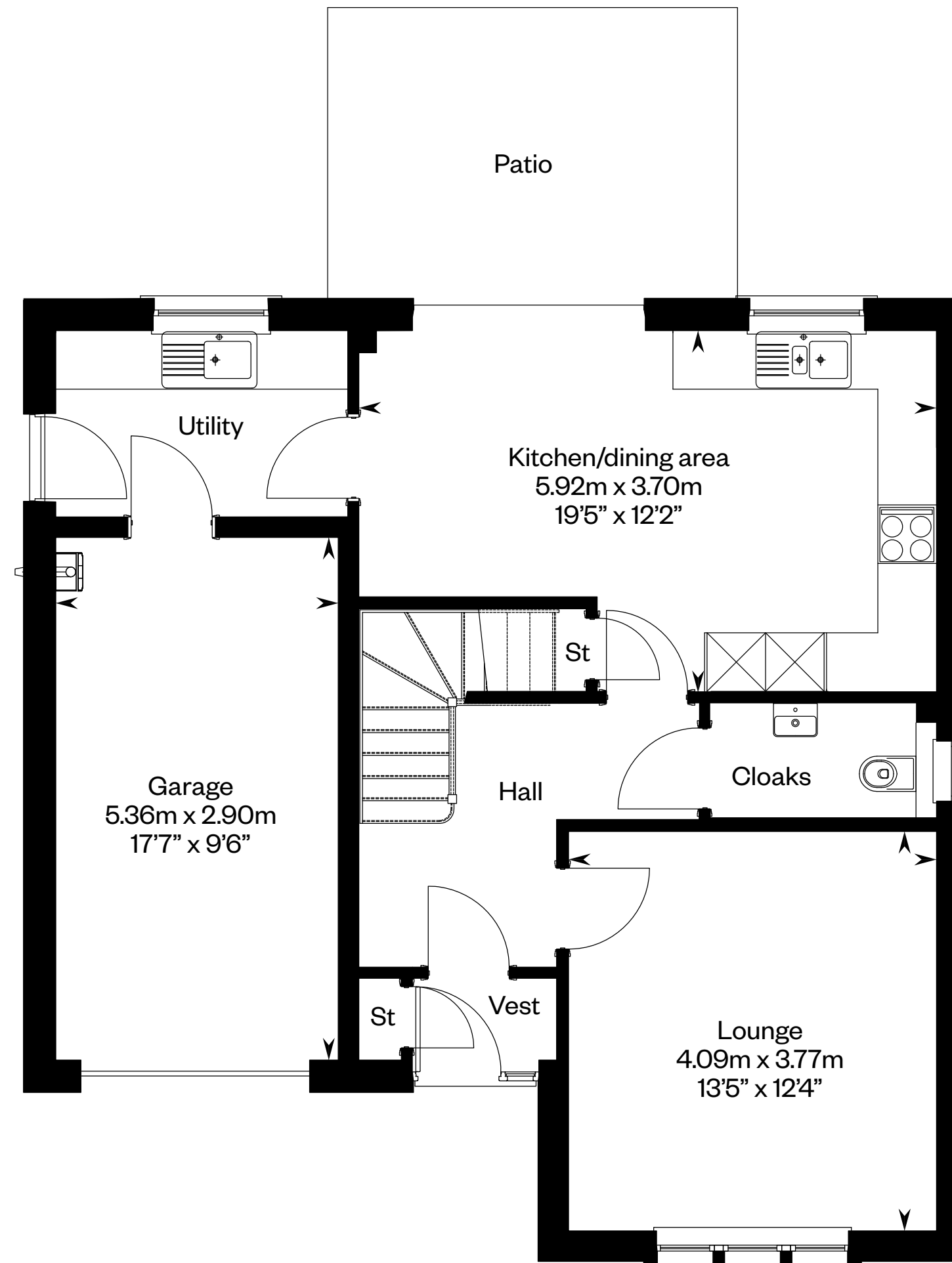
The Barrie

Plot 13 – as shown

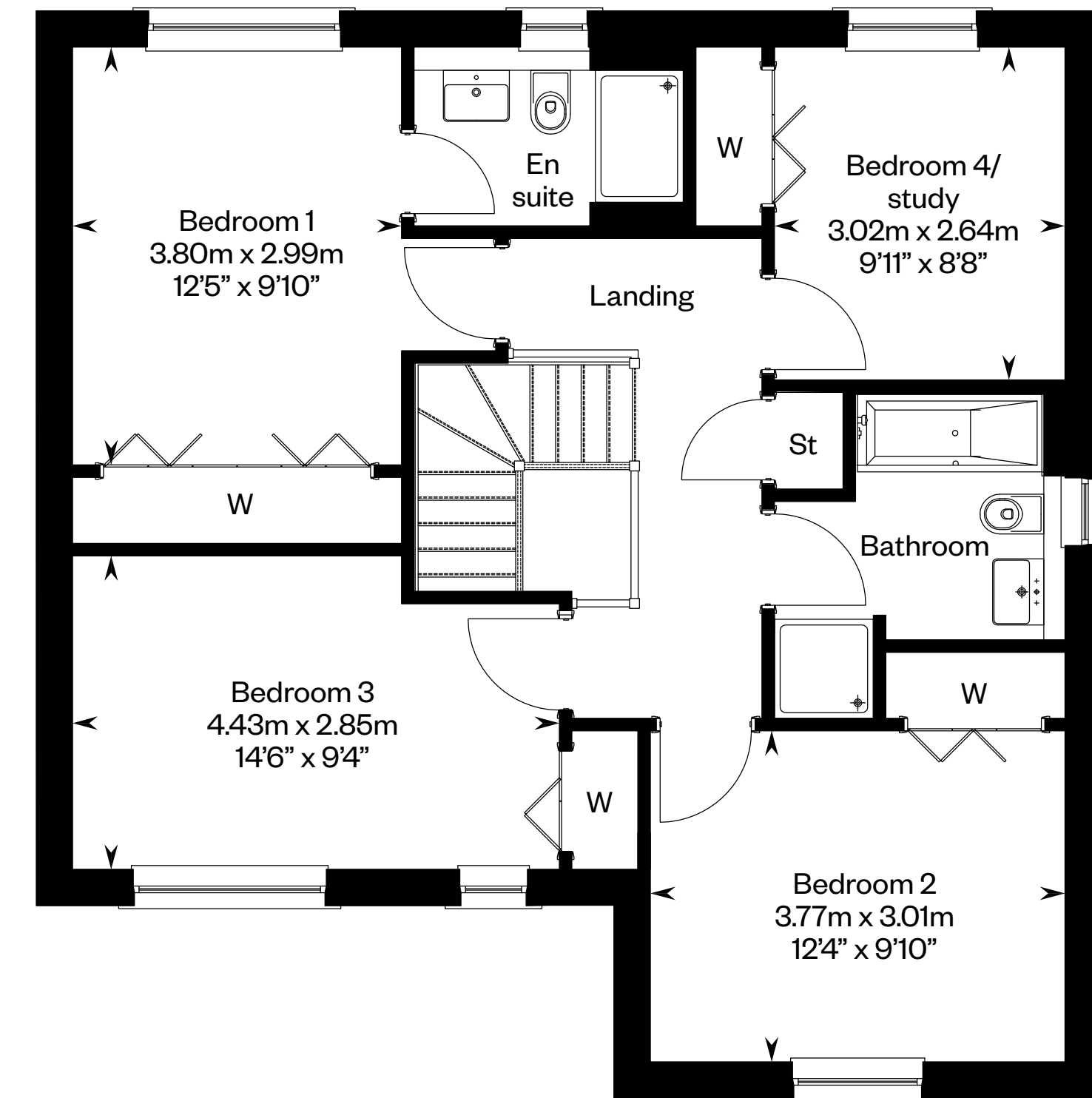
Plot 15 – handed



This is a Predicted Energy Assessment for properties that are incomplete. Once the property is completed, this rating will be updated and an official Energy Performance Certificate will be created for the property.



Ground floor



First floor

Please ask your Sales Consultant for further details. ST: Store cupboard. W: Wardrobe.

IMPORTANT NOTICE TO CUSTOMERS: The Consumer Protection from Unfair Trading Regulations 2008. Cala Homes (North) Limited operates a policy of continual product development and the specifications outlined in this brochure are indicative only. The computer generated images and photographs do not necessarily represent the actual finishings/elevation or treatments, landscaping, furnishings and fittings at this development. Information contained is accurate at date of publication on 11.05.23. See the main brochure for the full Consumer Protection statement.

The Colville

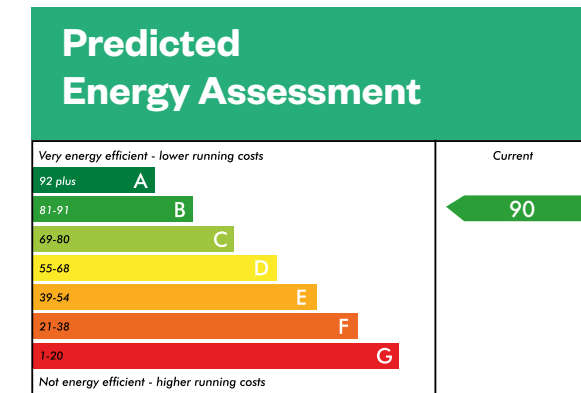
5 bedroom detached home



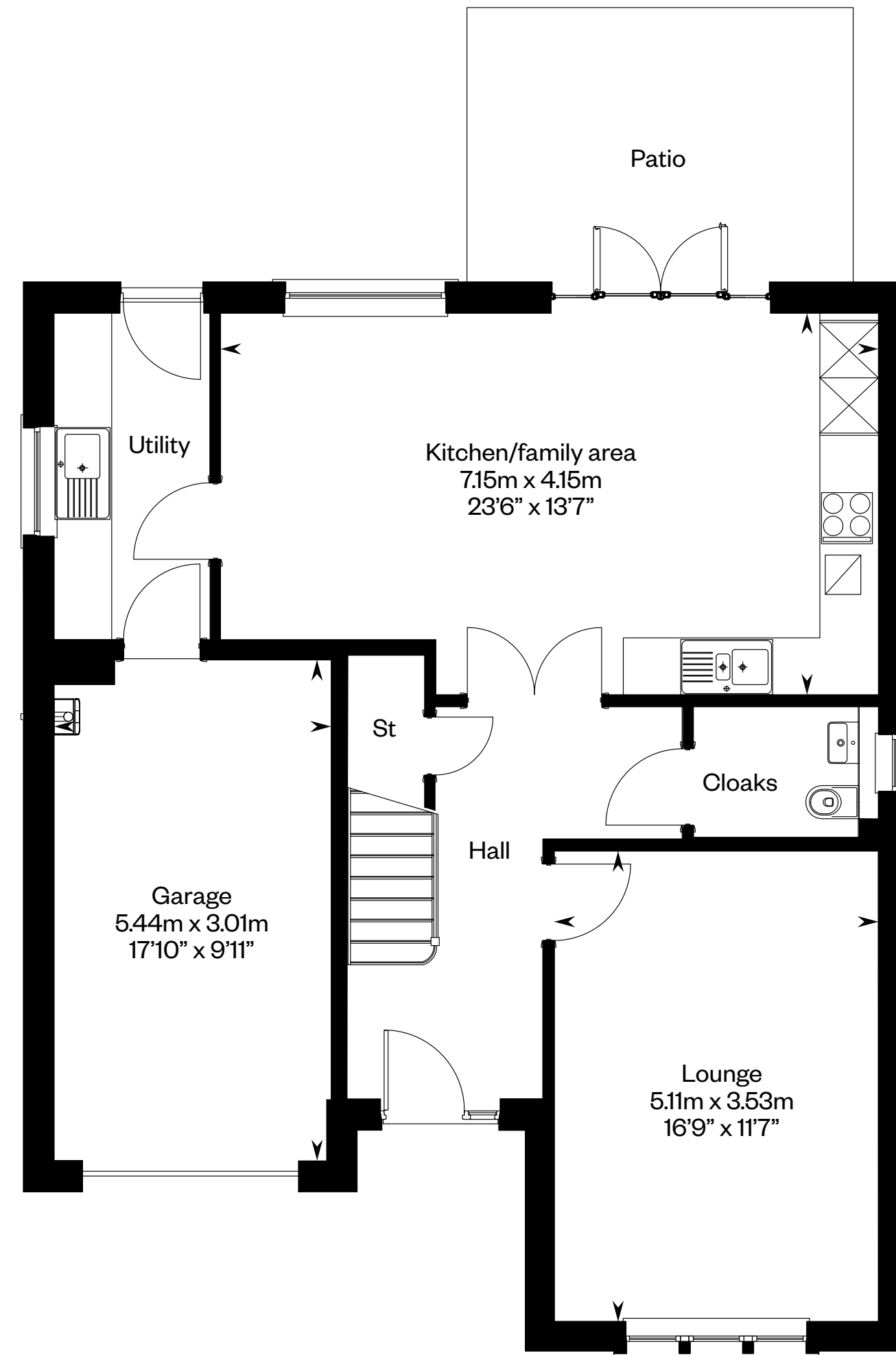
The Colville

Plots 11, 12, 14, 18, 21, 27, 30 – as shown

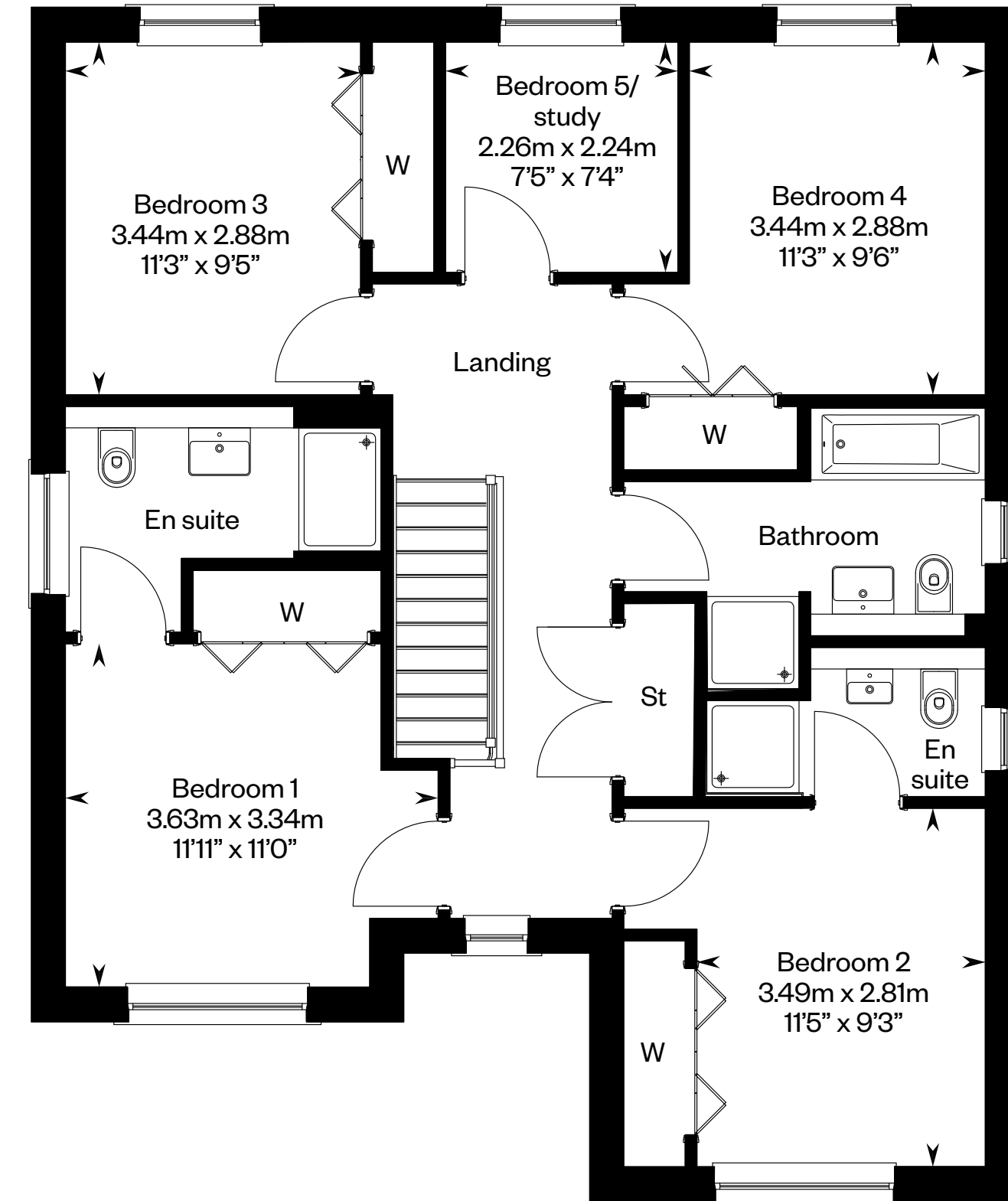
Plots 4, 5, 19, 36 – handed



This is a Predicted Energy Assessment for properties that are incomplete. Once the property is completed, this rating will be updated and an official Energy Performance Certificate will be created for the property.



Ground floor



First floor

Please ask your Sales Consultant for further details. ST: Store cupboard. W: Wardrobe.

IMPORTANT NOTICE TO CUSTOMERS: The Consumer Protection from Unfair Trading Regulations 2008. Cala Homes (North) Limited operates a policy of continual product development and the specifications outlined in this brochure are indicative only. The computer generated images and photographs do not necessarily represent the actual finishings/elevation or treatments, landscaping, furnishings and fittings at this development. Information contained is accurate at date of publication on 11.05.23. See the main brochure for the full Consumer Protection statement.

The Crichton

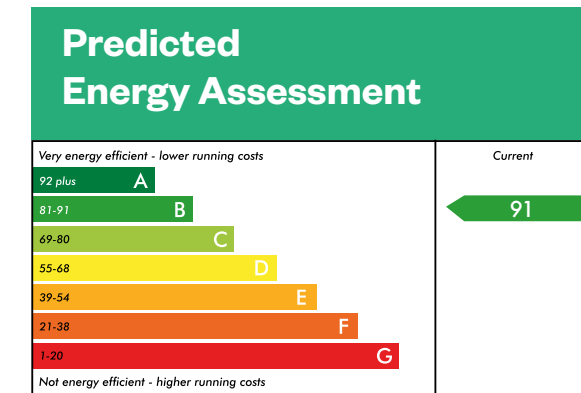
5 bedroom detached home



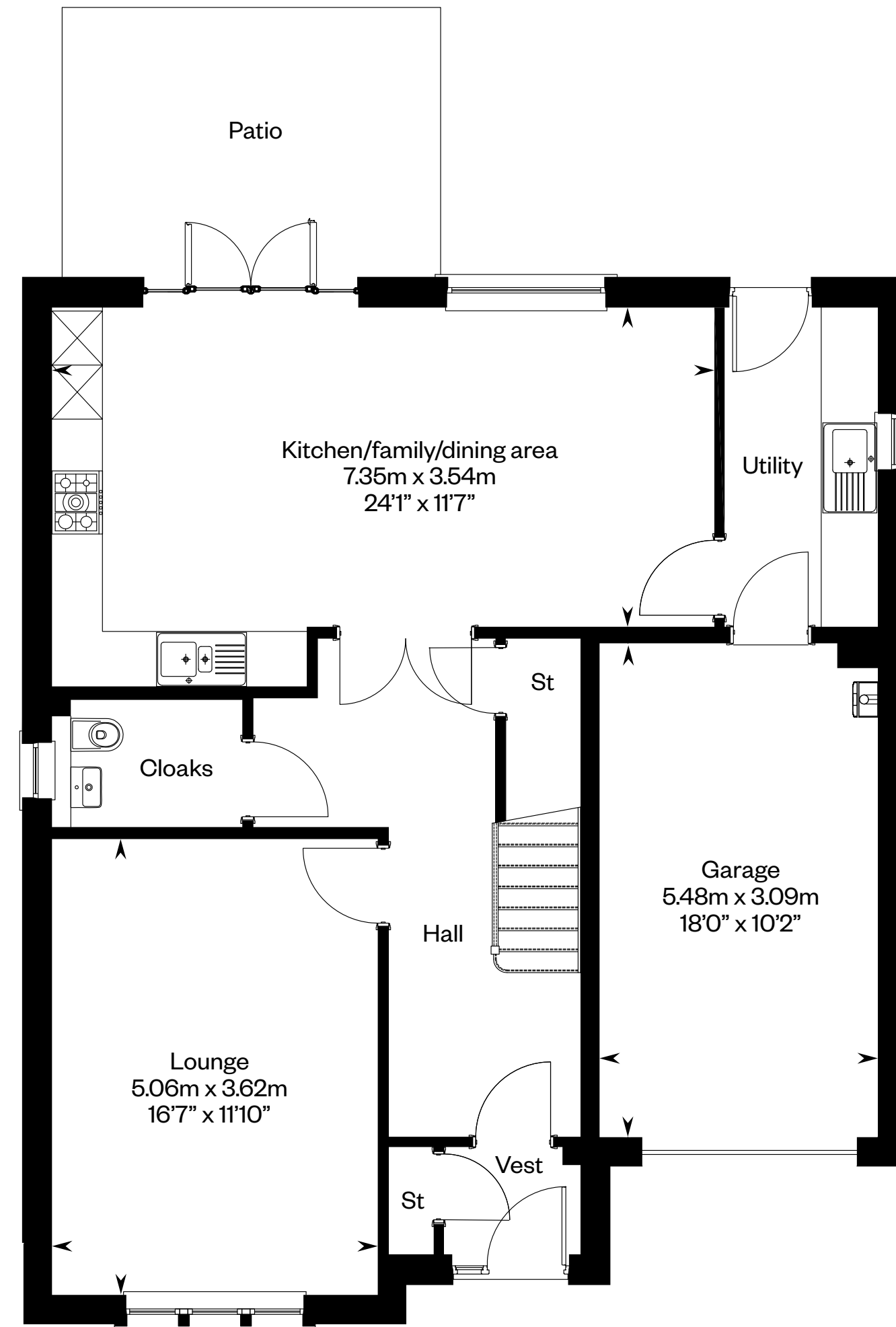
The Crichton

Plots 3, 6 – as shown

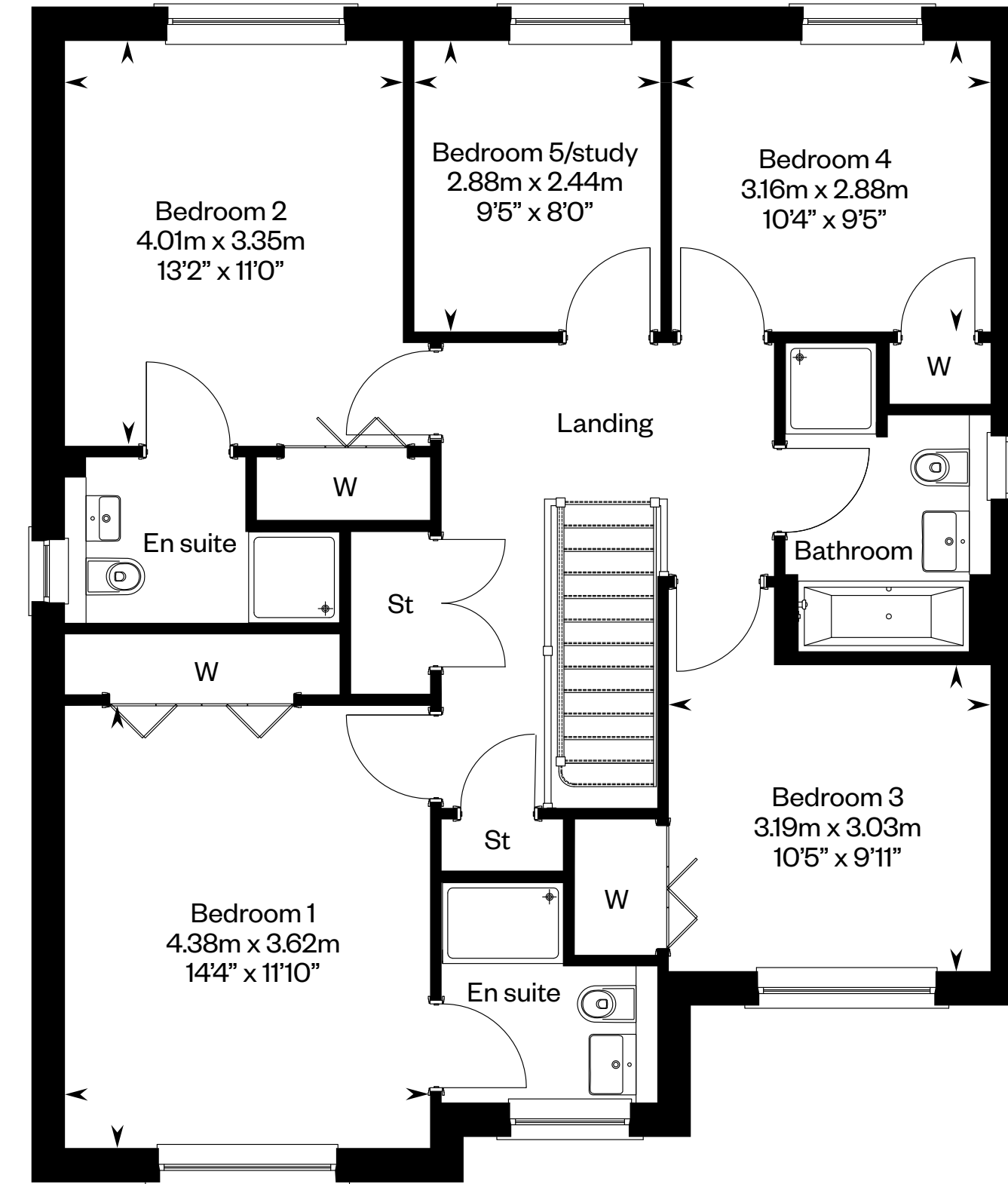
Plots 2, 10, 29, 31 – handed



This is a Predicted Energy Assessment for properties that are incomplete. Once the property is completed, this rating will be updated and an official Energy Performance Certificate will be created for the property.



Ground floor



First floor

Please ask your Sales Consultant for further details. ST: Store cupboard. W: Wardrobe.

IMPORTANT NOTICE TO CUSTOMERS: The Consumer Protection from Unfair Trading Regulations 2008. Cala Homes (North) Limited operates a policy of continual product development and the specifications outlined in this brochure are indicative only. The computer generated images and photographs do not necessarily represent the actual finishings/elevation or treatments, landscaping, furnishings and fittings at this development. Information contained is accurate at date of publication on 11.05.23. See the main brochure for the full Consumer Protection statement.

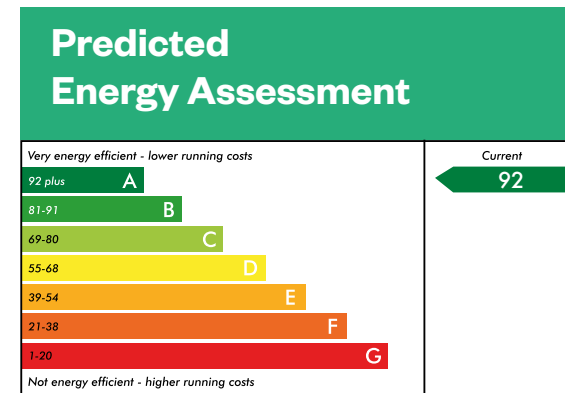
The Dewar

5 bedroom detached home

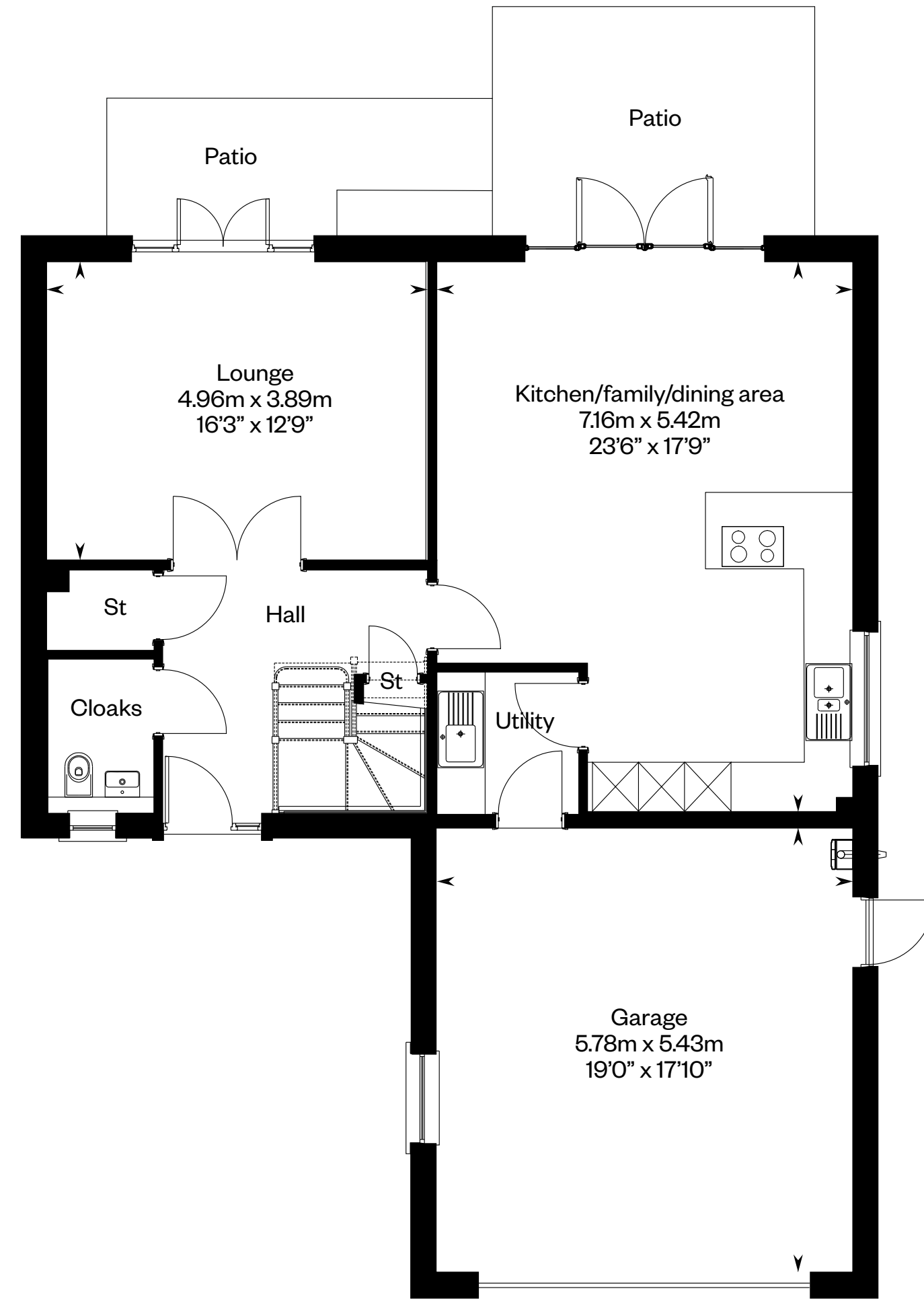


The Dewar

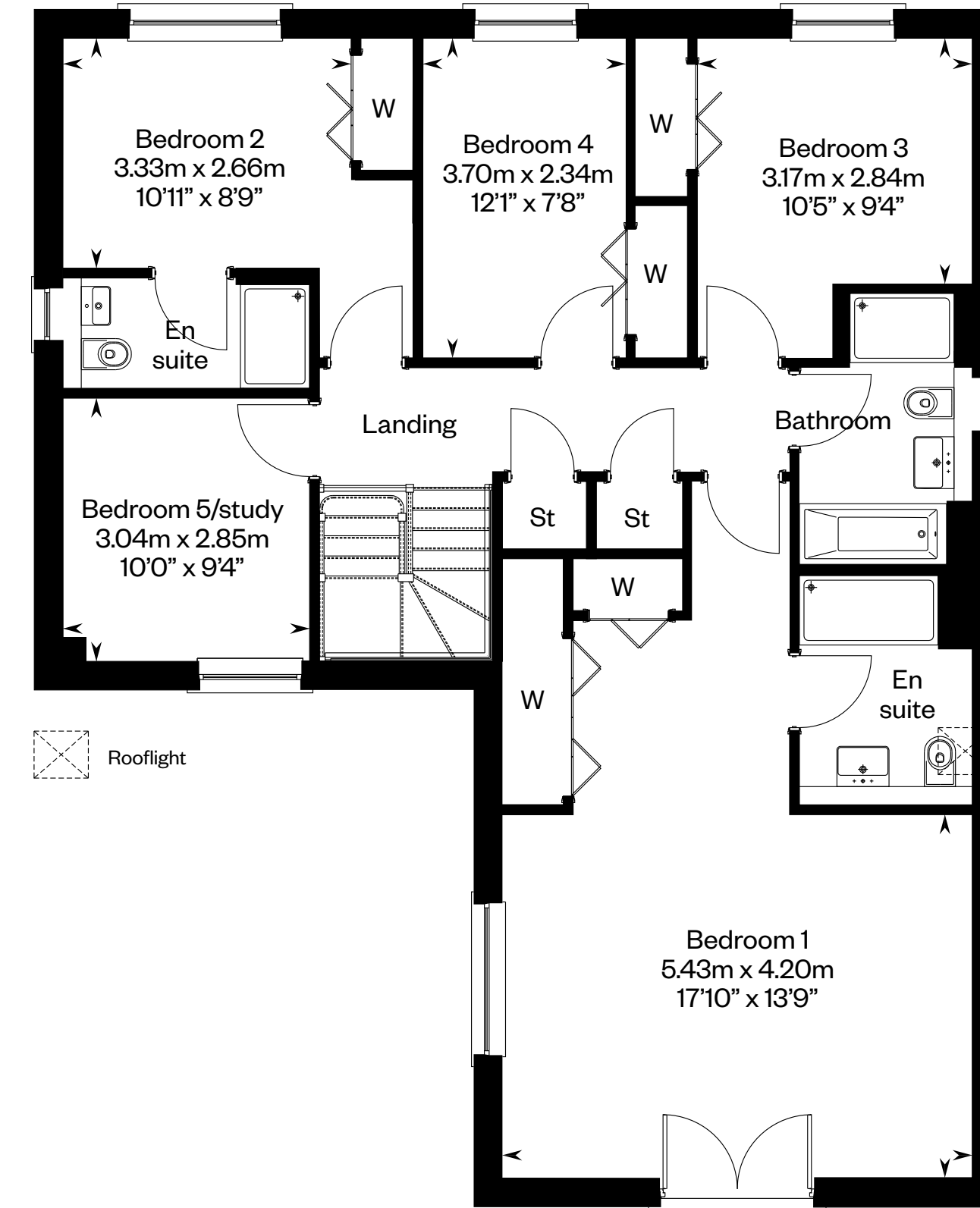
Plot 23 – as shown



This is a Predicted Energy Assessment for properties that are incomplete. Once the property is completed, this rating will be updated and an official Energy Performance Certificate will be created for the property.



Ground floor



First floor

Please ask your Sales Consultant for further details. ST: Store cupboard. W: Wardrobe.

IMPORTANT NOTICE TO CUSTOMERS: The Consumer Protection from Unfair Trading Regulations 2008. Cala Homes (North) Limited operates a policy of continual product development and the specifications outlined in this brochure are indicative only. The computer generated images and photographs do not necessarily represent the actual finishings/elevation or treatments, landscaping, furnishings and fittings at this development. Information contained is accurate at date of publication on 22.08.23. See the main brochure for the full Consumer Protection statement.

The Garvie

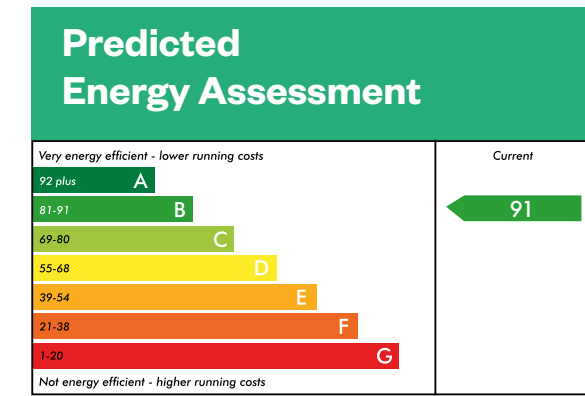
5 bedroom detached home



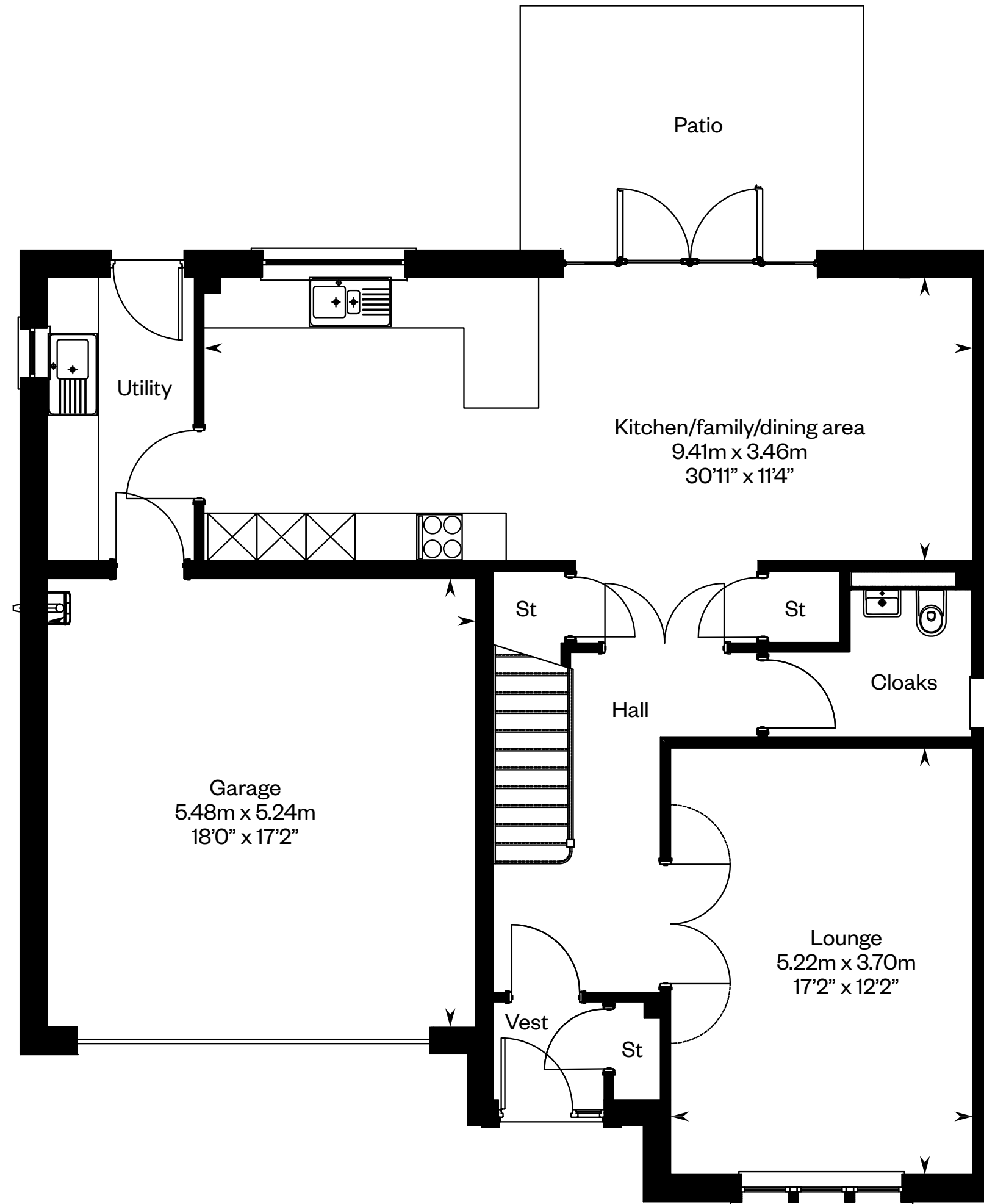
The Garvie

Plots 9, 22, 32, 37 – as shown

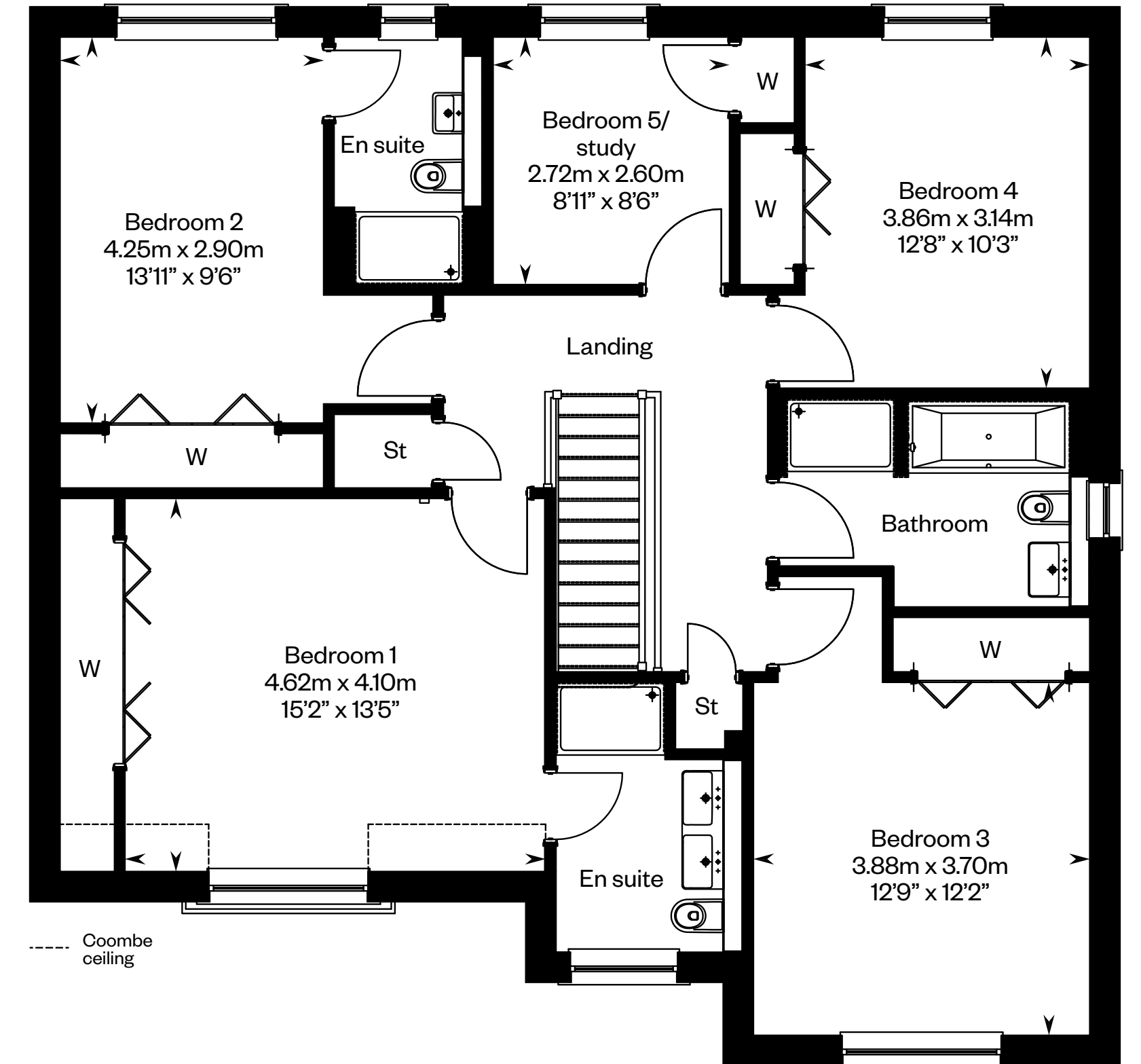
Plots 7, 20, 24, 28, 35 – handed



This is a Predicted Energy Assessment for properties that are incomplete. Once the property is completed, this rating will be updated and an official Energy Performance Certificate will be created for the property.



Ground floor



First floor

Please ask your Sales Consultant for further details. ST: Store cupboard. W: Wardrobe.

IMPORTANT NOTICE TO CUSTOMERS: The Consumer Protection from Unfair Trading Regulations 2008. Cala Homes (North) Limited operates a policy of continual product development and the specifications outlined in this brochure are indicative only. The computer generated images and photographs do not necessarily represent the actual finishings/elevation or treatments, landscaping, furnishings and fittings at this development. Information contained is accurate at date of publication on 11.05.23. See the main brochure for the full Consumer Protection statement.

The Lowther

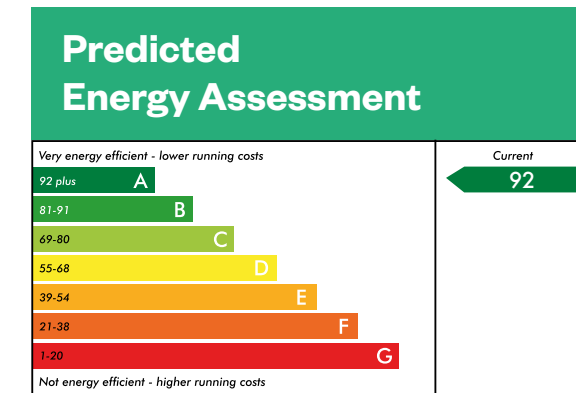
5 bedroom detached home



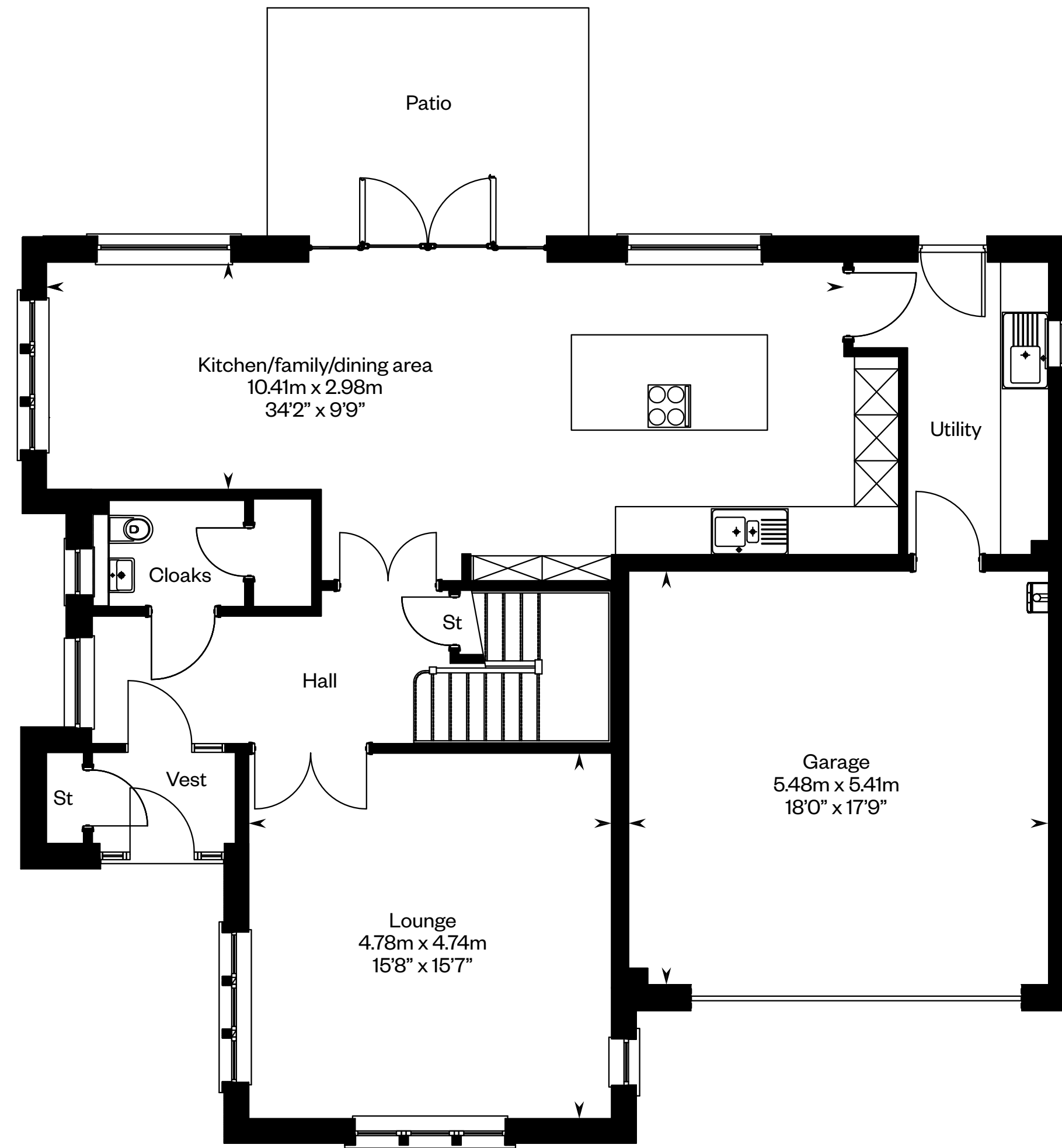
The Lowther

Plots 25, 33 – as shown

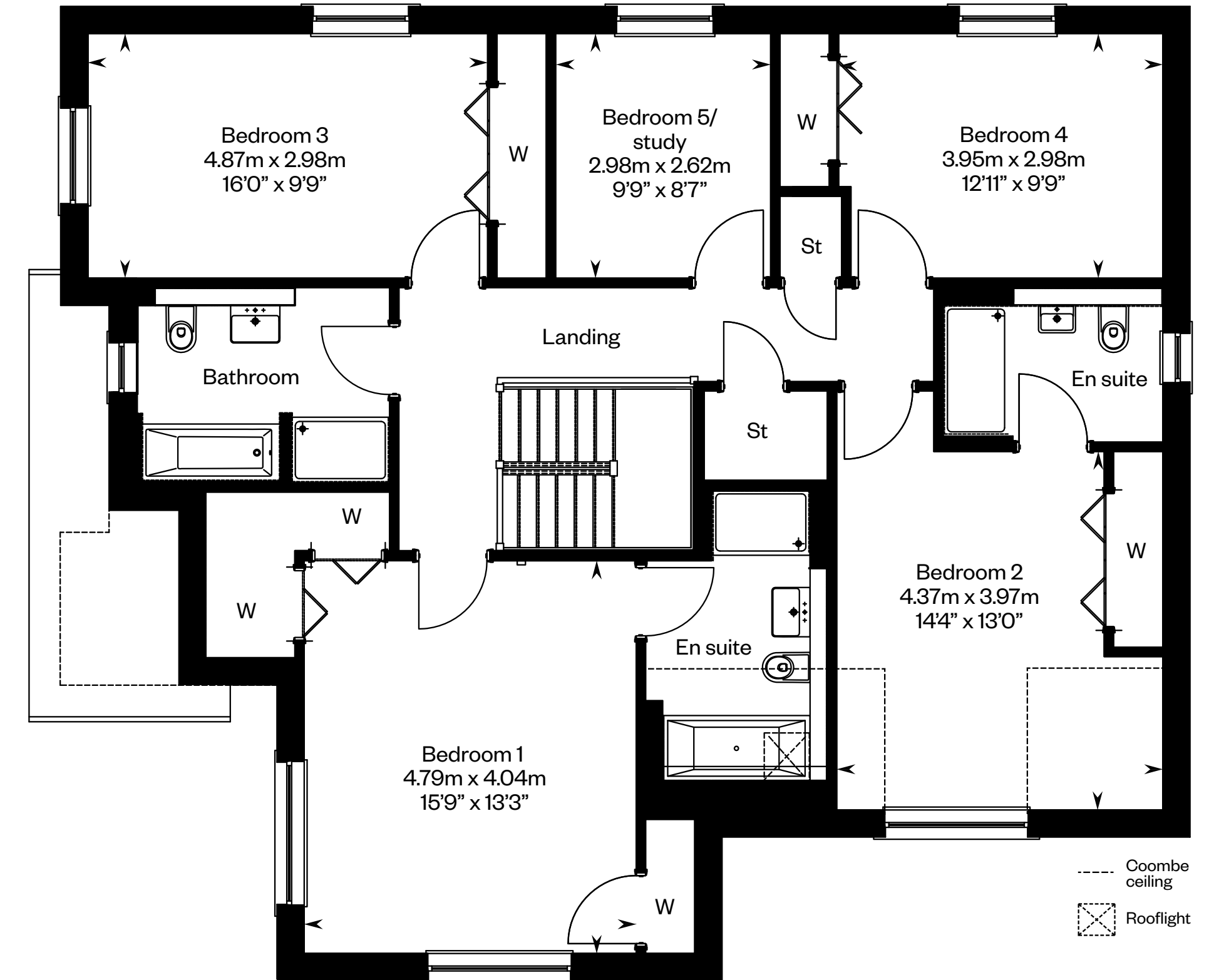
Plots 1, 26 – handed



This is a Predicted Energy Assessment for properties that are incomplete. Once the property is completed, this rating will be updated and an official Energy Performance Certificate will be created for the property.



Ground floor



First floor

Please ask your Sales Consultant for further details. ST: Store cupboard. W: Wardrobe.

IMPORTANT NOTICE TO CUSTOMERS: The Consumer Protection from Unfair Trading Regulations 2008. Cala Homes (North) Limited operates a policy of continual product development and the specifications outlined in this brochure are indicative only. The computer generated images and photographs do not necessarily represent the actual finishings/elevation or treatments, landscaping, furnishings and fittings at this development. Information contained is accurate at date of publication on 11.05.23. See the main brochure for the full Consumer Protection statement.

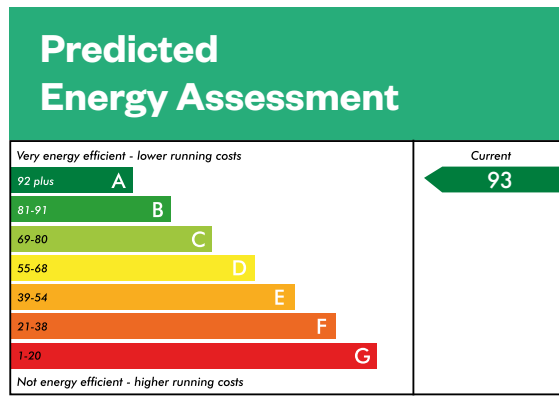
The MacRae

5 bedroom detached home with study

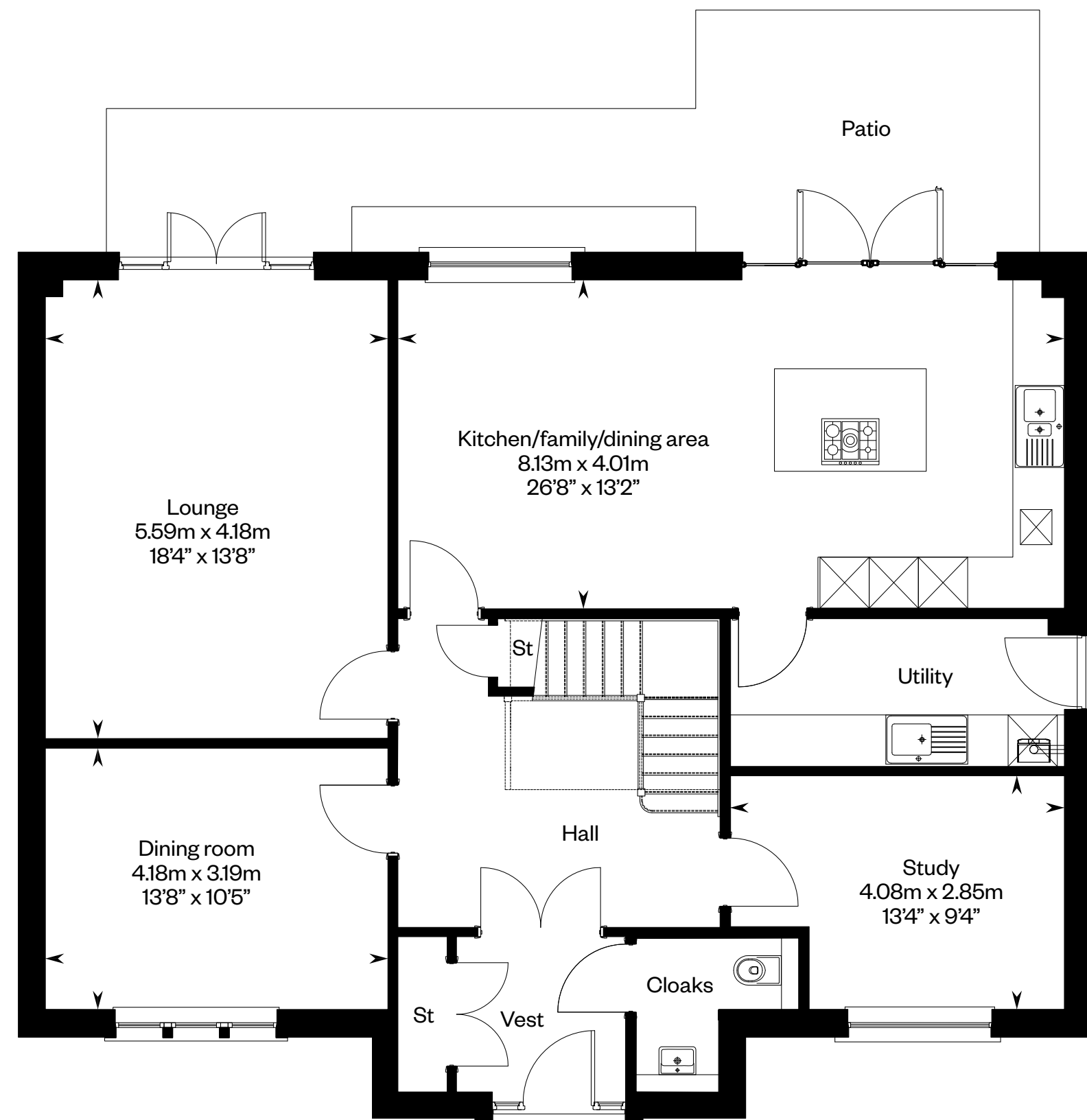


The MacRae

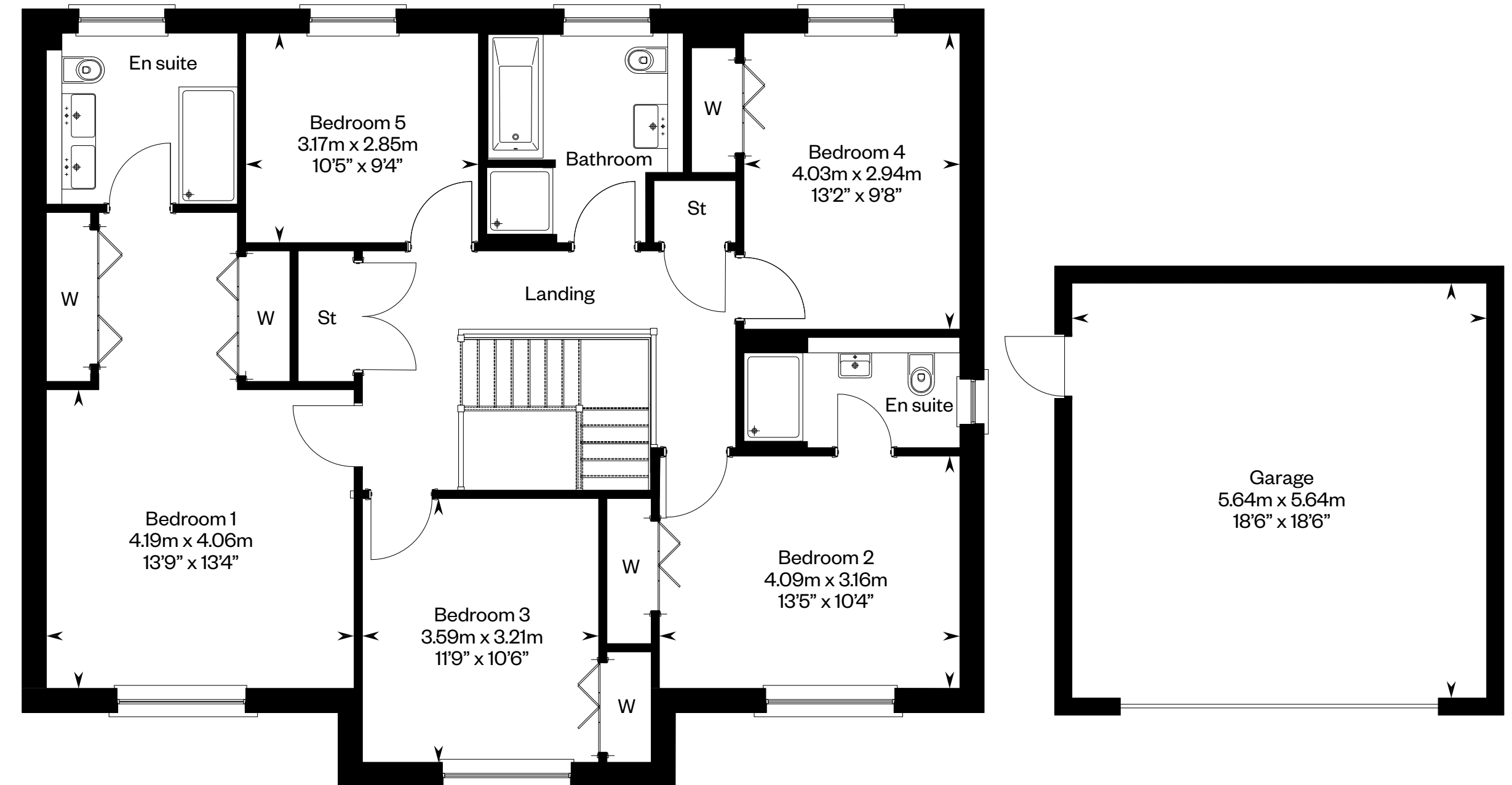
Plots 34, 38 – as shown



This is a Predicted Energy Assessment for properties that are incomplete. Once the property is completed, this rating will be updated and an official Energy Performance Certificate will be created for the property.



Ground floor



First floor

Please ask your Sales Consultant for further details. ST: Store cupboard. W: Wardrobe.

IMPORTANT NOTICE TO CUSTOMERS: The Consumer Protection from Unfair Trading Regulations 2008. Cala Homes (North) Limited operates a policy of continual product development and the specifications outlined in this brochure are indicative only. The computer generated images and photographs do not necessarily represent the actual finishings/elevation or treatments, landscaping, furnishings and fittings at this development. Information contained is accurate at date of publication on 11.05.23. See the main brochure for the full Consumer Protection statement.

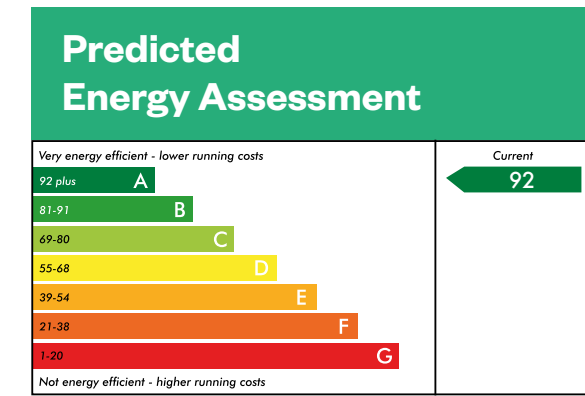
The Moncrief

5 bedroom detached home

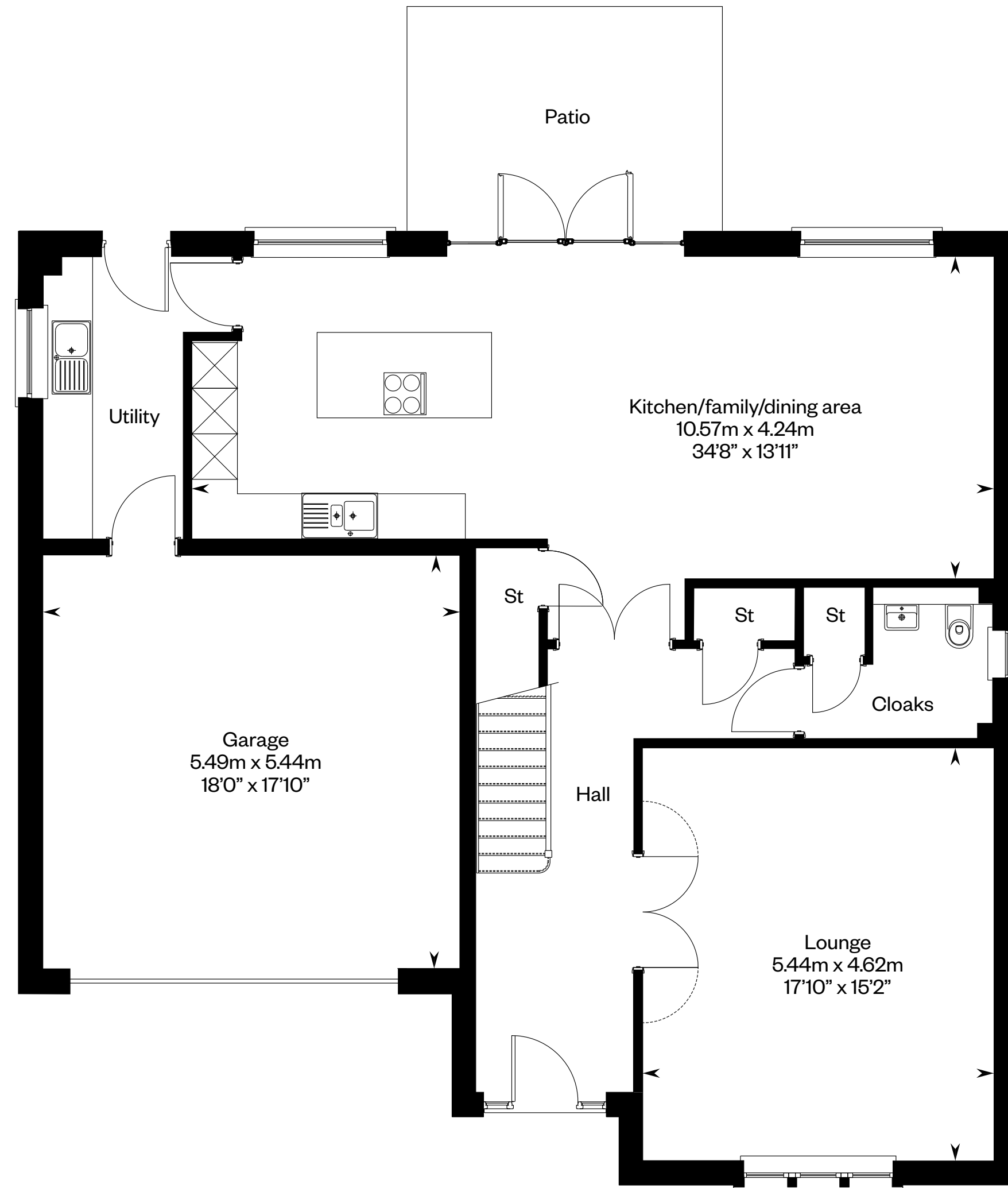


The Moncrief

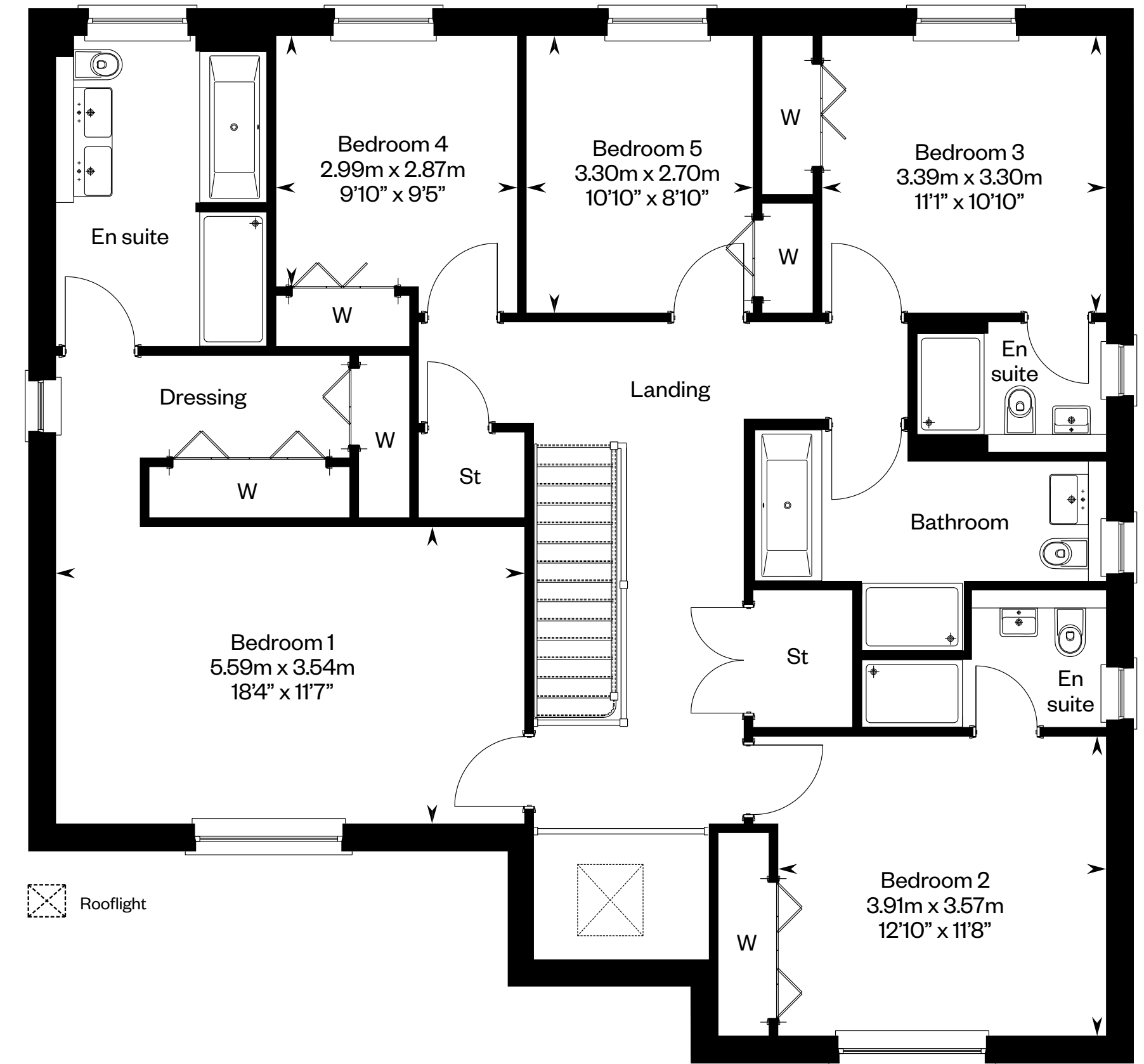
Plot 8 – as shown



This is a Predicted Energy Assessment for properties that are incomplete. Once the property is completed, this rating will be updated and an official Energy Performance Certificate will be created for the property.



Ground floor



First floor

Please ask your Sales Consultant for further details. ST: Store cupboard. W: Wardrobe.

IMPORTANT NOTICE TO CUSTOMERS: The Consumer Protection from Unfair Trading Regulations 2008. Cala Homes (North) Limited operates a policy of continual product development and the specifications outlined in this brochure are indicative only. The computer generated images and photographs do not necessarily represent the actual finishings/elevation or treatments, landscaping, furnishings and fittings at this development. Information contained is accurate at date of publication on 11.05.23. See the main brochure for the full Consumer Protection statement.