



The Bayberry

2 bedroom end and
mid terrace home

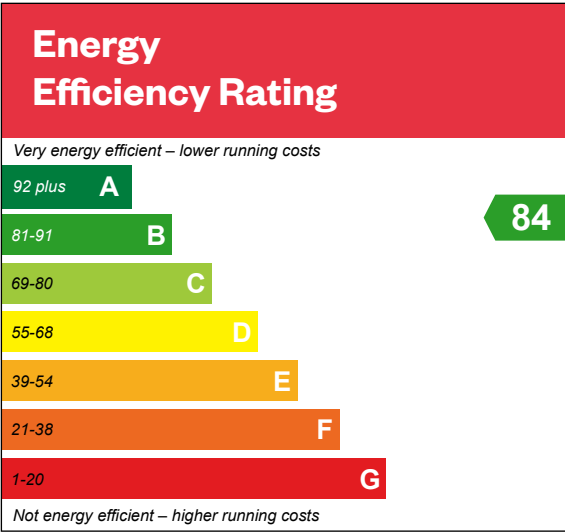


The Bayberry

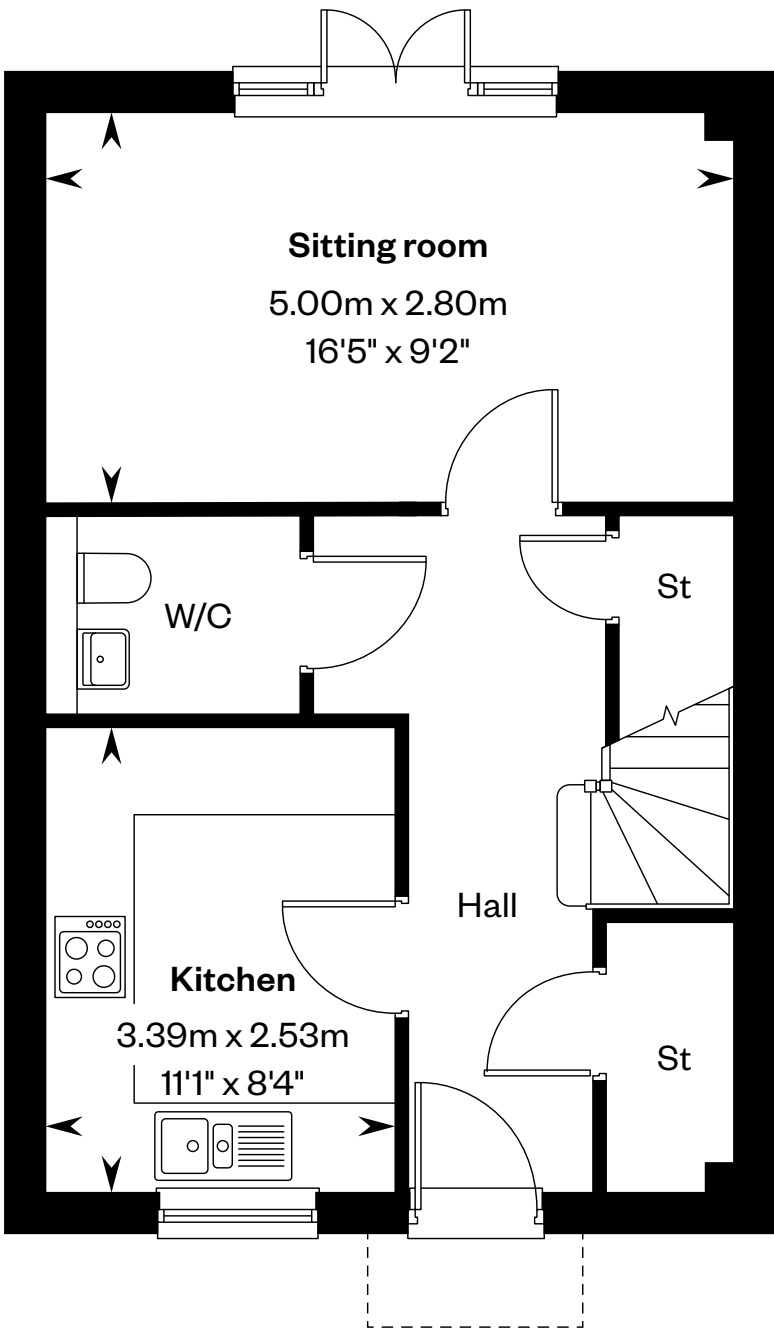
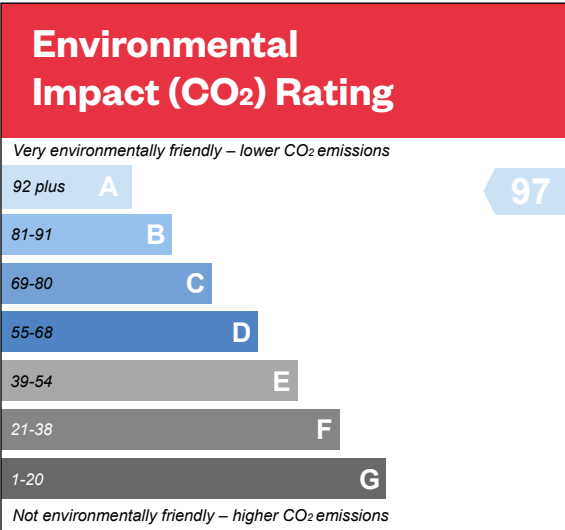
2 bedroom end and mid terrace home

Plots 25 & 26 – as shown

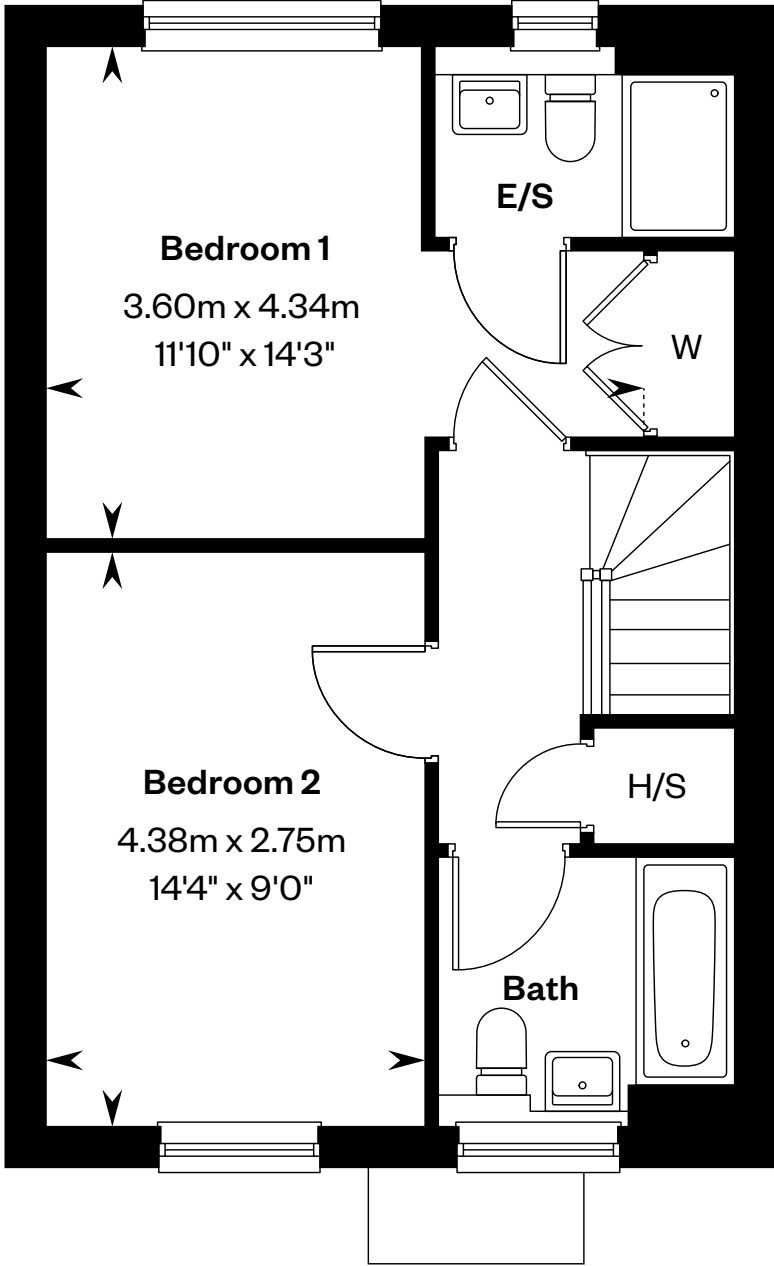
Plot 24 – handed



This is a Predicted Energy Assessment for properties that are incomplete. Once the property is completed, this rating will be updated and an official Energy Performance Certificate will be created for the property.



Ground floor



First floor

Please ask your Sales Consultant for further details.
E/S: En-Suite. St: Store cupboard. W: Wardrobe. H/S: Heating source cupboard.

IMPORTANT NOTICE TO CUSTOMERS: The Consumer Protection from Unfair Trading Regulations 2008. Cala Homes (North Home Counties) Limited operates a policy of continual product development and the specifications outlined in this brochure are indicative only. The computer generated images and photographs do not necessarily represent the actual finishings/ elevation or treatments, landscaping, furnishings and fittings at this development. Information contained is accurate at date of publication on 23.06.2025. See the main brochure for the full Consumer Protection statement.