



**JORDANHILL**  
PARK

**GRAHAM** HOUSE  
APARTMENTS





**JORDANHILL**  
PARK



# GRAHAM HOUSE



Computer generated image of Graham House.





## INTRODUCTION

# A HOME FOR ALL SEASONS

Jordanhill Park is a truly unique development that gives the  
best of city living.

Set in acres of beautiful parkland, and just a stone's throw from  
Glasgow city centre, this historic site is the perfect place for life  
to flow in an environment that will continue to grow.



VISION

# A VIEW THAT GROWS WITH YOU





Designed by award-winning architects 7N, Jordanhill Park maintains the Edwardian look and feel of the local community while offering a wide choice of contemporary homes.

Its neo-classical entrance lobby, reminiscent of large residential buildings in New York of the same period, creates a wonderfully elegant entrance

**“Jordanhill Park retains its woodland setting, with around a third of the development remaining as open space that protects the site’s historic parkland.”**

At the heart of the development is the striking B-listed David Stow building, which has been converted into luxury apartments created from its former teaching spaces.

while its design around two central courtyards, delivers superb views of the surrounding landscape and beyond.

New public paths, cycle ways and children’s play areas complement the innovative design of the development.







Enjoying clever design features and situated in parkland close to the urban attractions of Glasgow's sought-after West End, Jordanhill Park has something to offer everyone.

The development is within reach of many cosmopolitan cafes, restaurants and

Families are also catered for, with numerous primary and secondary schools in the vicinity, including some of Glasgow's highly desirable private schools. Several of the city's most popular parks, such as Victoria Park, are nearby, providing an abundance of entertainment for little ones and opportunities to enjoy the outdoors.

**“Close to the urban attractions of Glasgow's sought-after West End, Jordanhill Park has something to offer everyone.”**

bars while the city centre is also in close proximity for those who wish to explore Glasgow's many art galleries, museums, parks and renowned retail offering.

Glasgow's Buchanan Street, known as the Style Mile, is ranked as being amongst the UK's top shopping locations.

Jordanhill Park is within walking distance of the train stations and bus routes whilst also being close to major road networks, providing ease of access for commuters and leisure enthusiasts alike.

LIFESTYLE

## LIFE AT JORDANHILL PARK

JORDANHILL PARK

# GRAHAM HOUSE

## Apartments

Completed in 1917, Graham House is a former student residence for those studying at the David Stow teacher training college within Jordanhill Park.

The beautifully crafted red sandstone façade commands magnificent period frontage, whilst the interior of the building has been reimagined to offer a contemporary collection of 20 bespoke 1, 2 and 3 bedroom apartments, including two grand 3 bedroom duplexes.







Computer generated image of Graham House.





Computer generated image  
of a Graham House apartment.









Computer generated image  
of a Graham House apartment.





Computer generated image  
of a Graham House apartment.



Show apartment at Graham House



Show apartment at Graham House



Show apartment at Graham House

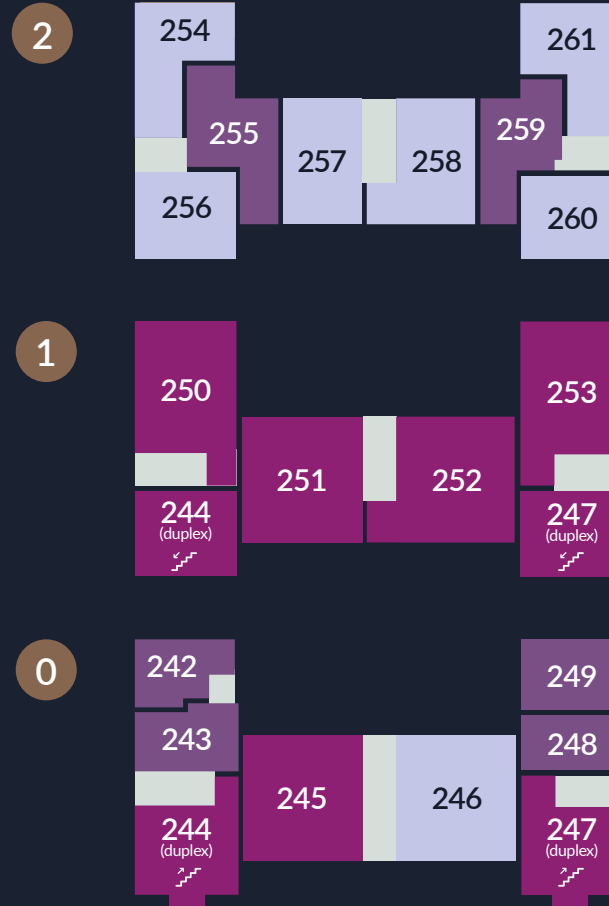






## JORDANHILL PARK

# GRAHAM HOUSE



One Bedroom Apartment

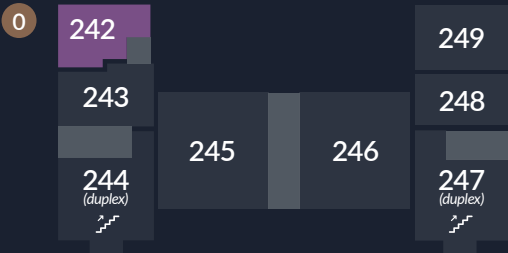
Two Bedroom Apartment

Three Bedroom Apartment



# PLOT 242

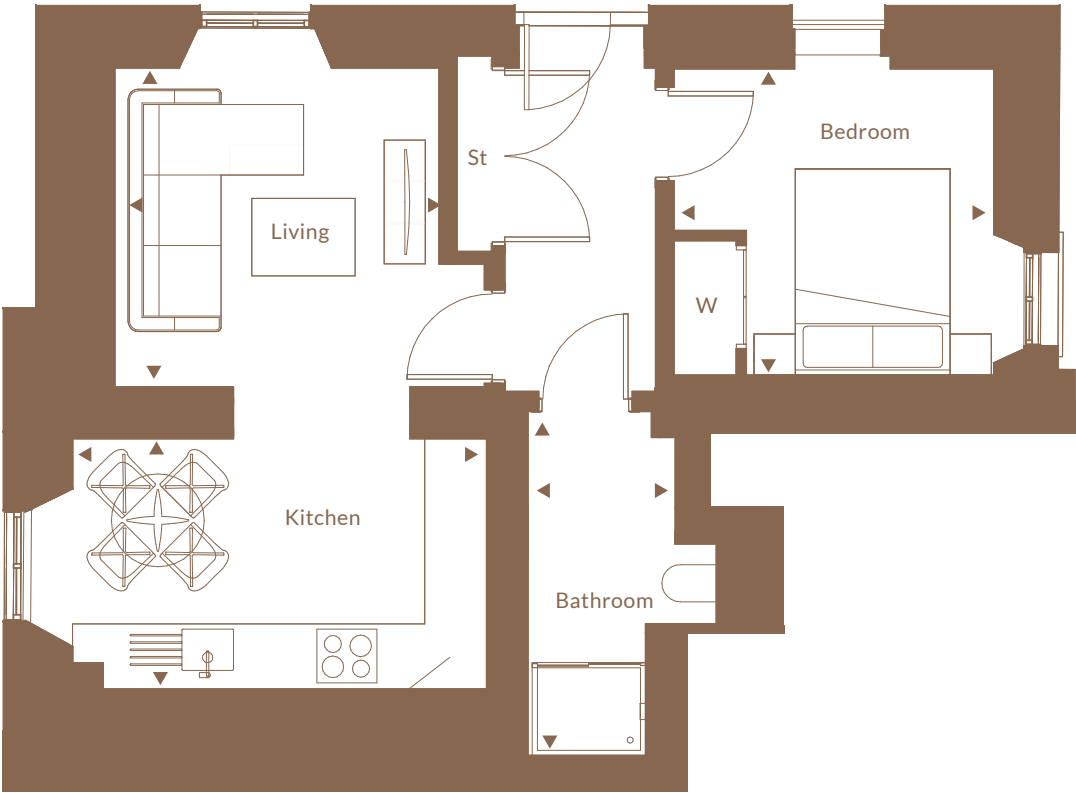
One bed apartment



Space	Metres	Feet/Inches
Living	3.15m x 3.09m	10' 4" x 10' 2"
Kitchen	4.02m x 2.43m	13' 2" x 7' 12"
Bedroom	3.10m x 2.97m	10' 2" x 9' 9"
Bathroom	1.43m x 3.34m	4' 8" x 10' 11"

Total sq ft

472 sqft



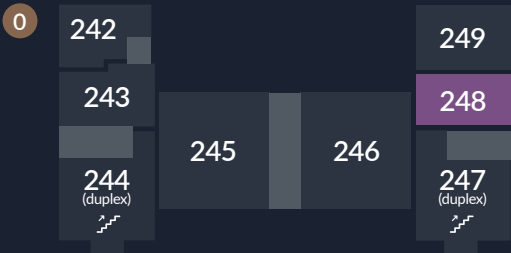
St: Store cupboard

W: Wardrobe



# PLOT 248

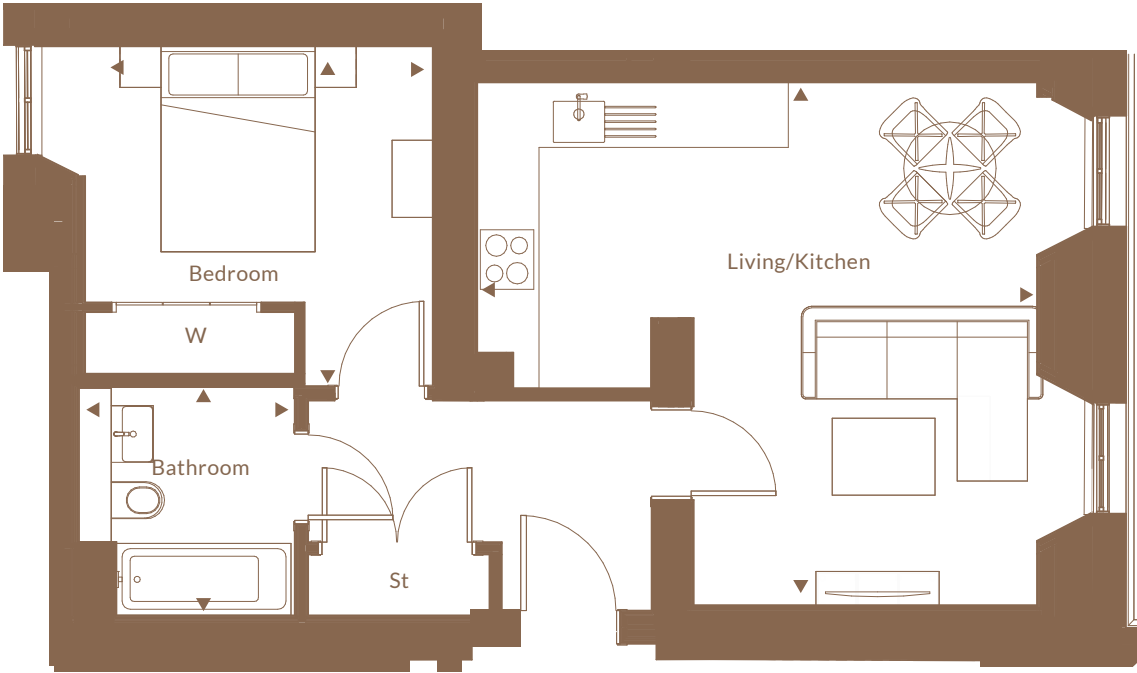
One bed apartment



Space	Metres	Feet/Inches
Living/Kitchen	5.45m x 5.09m	17' 10" x 16' 8"
Bedroom	3.39m x 3.33m	11' 1" x 10' 11"
Bathroom	2.11m x 2.22m	6' 11" x 7' 3"

Total sq ft

529 sqft

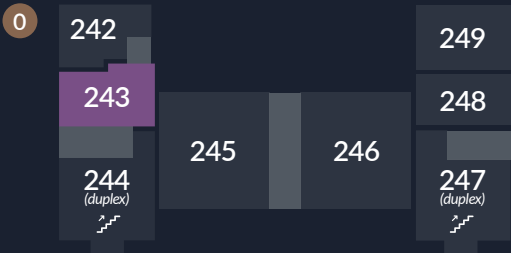


St: Store cupboard  
W: Wardrobe



# PLOT 243

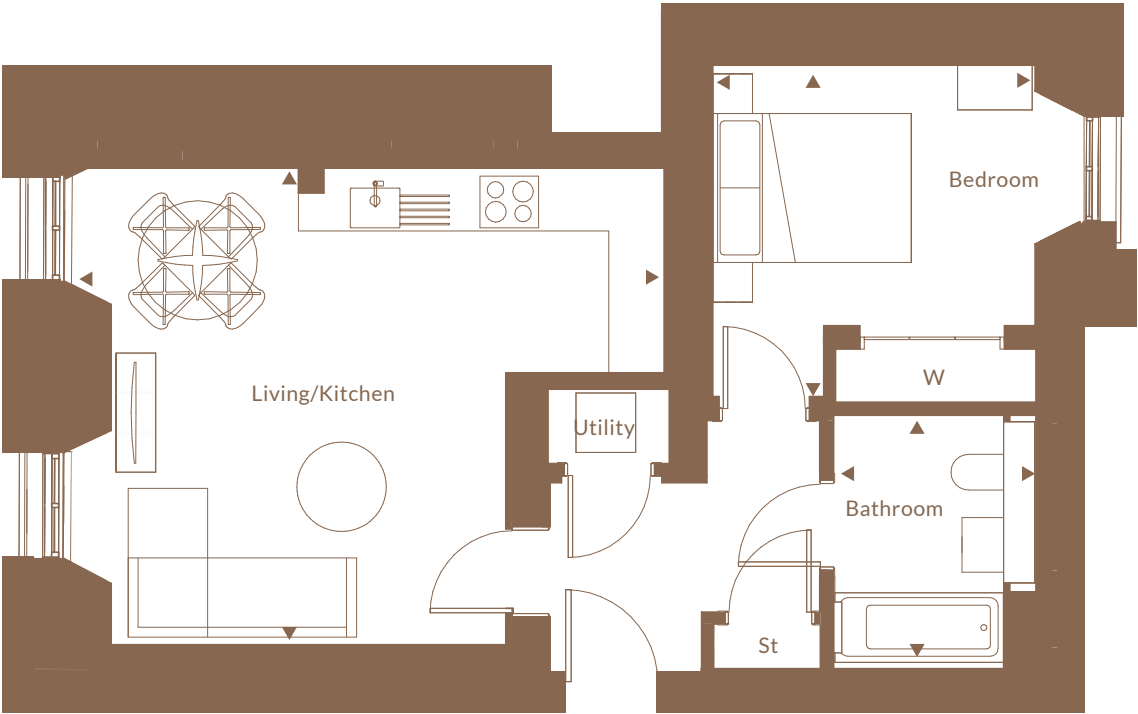
One bed apartment



Space	Metres	Feet/Inches
Living/Kitchen	5.57m x 4.80m	18' 3" x 15' 9"
Bedroom	3.25m x 3.34m	10' 8" x 10' 11"
Bathroom	2.04m x 2.55m	6' 8" x 8' 4"

Total sq ft

531 sqft



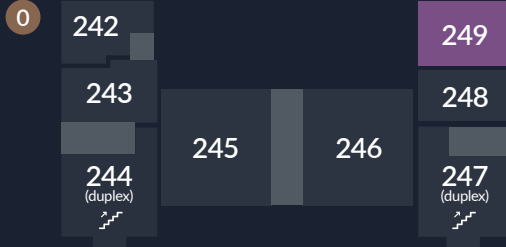
St: Store cupboard

W: Wardrobe



# PLOT 249

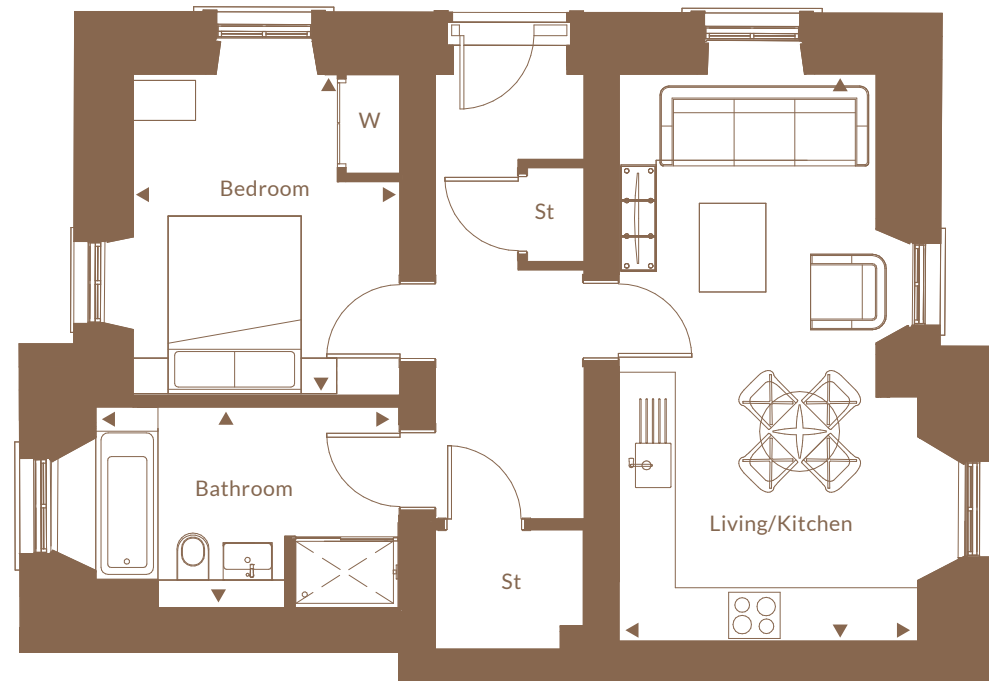
## One bedroom apartment



Space	Metres	Feet/Inches
Living/Kitchen	3.36m x 6.38m	11' 0" x 20' 11"
Bedroom	3.00m x 3.54m	9' 10" x 11' 7"
Bathroom	3.41m x 2.26m	11' 2" x 7' 5"

Total sq ft

590 sqft



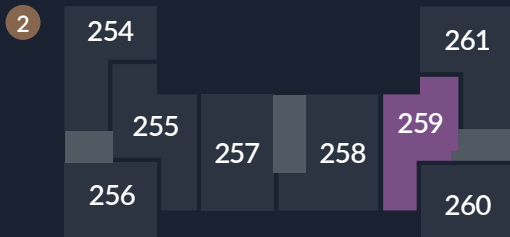
St: Store cupboard

W: Wardrobe



# PLOT 259

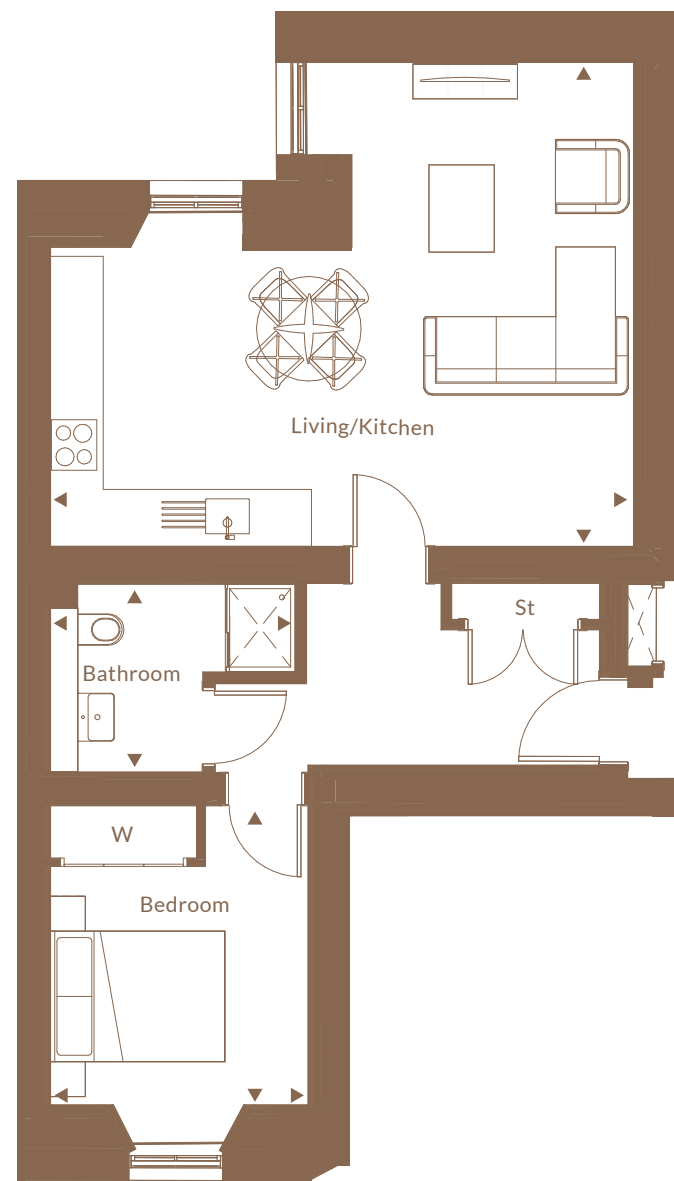
## One bed apartment



Space	Metres	Feet/Inches
Living/Kitchen	6.69m x 5.56m	21' 11" x 18' 2"
Bedroom	2.95m x 3.43m	9' 8" x 11' 3"
Bathroom	2.80m x 2.15m	9' 2" x 7' 0"

Total sq ft

615 sqft

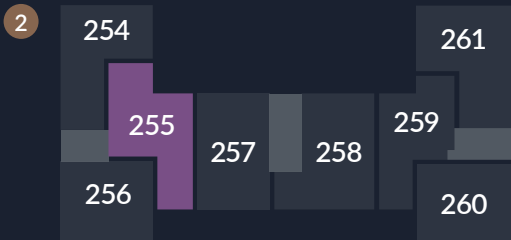


St: Store cupboard

W: Wardrobe

# PLOT 255

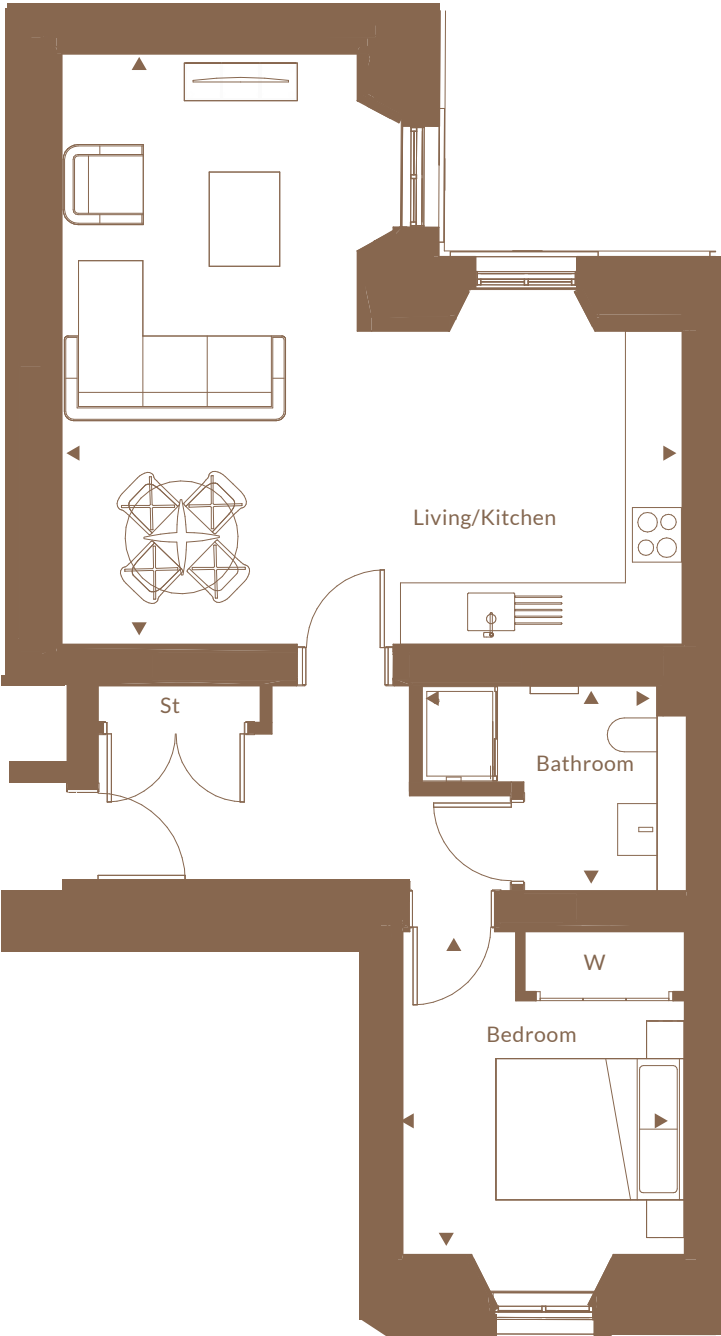
## One bed apartment



Space	Metres	Feet/Inches
Living/Kitchen	6.59m x 6.27m	21' 7" x 20' 7"
Bedroom	2.99m x 3.43m	9' 10" x 11' 3"
Bathroom	2.81m x 2.18m	9' 3" x 7' 2"

Total sq ft

633 sqft

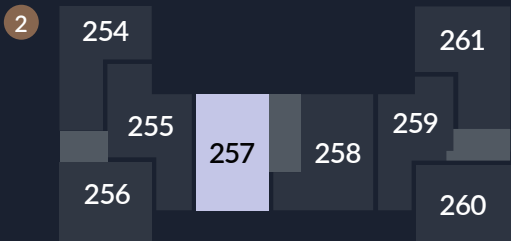


St: Store cupboard  
W: Wardrobe



# PLOT 257

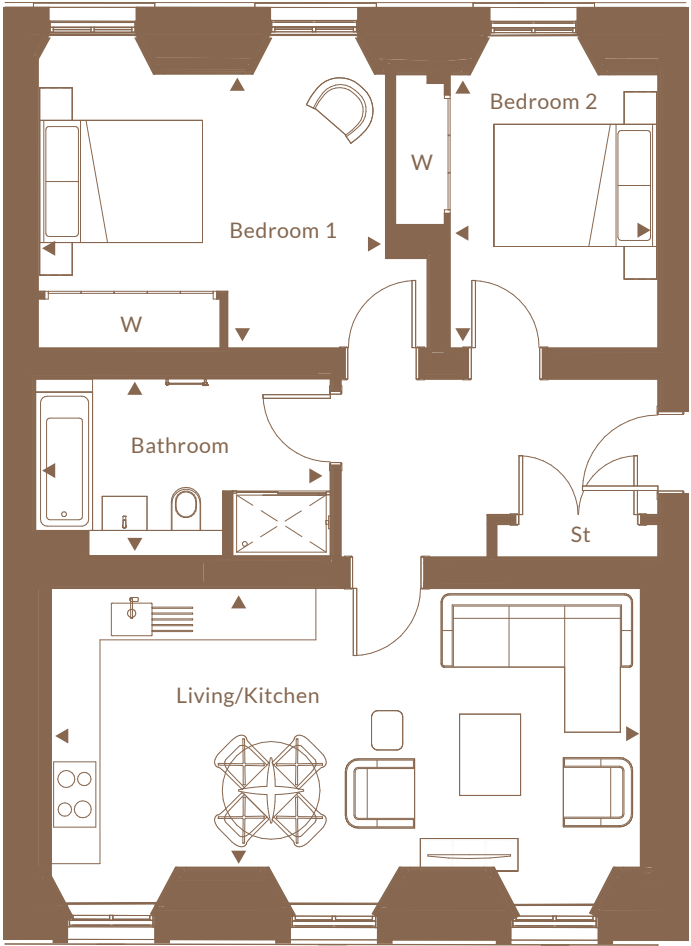
## Two bed apartment



Space	Metres	Feet/Inches
Living/Kitchen	7.24m x 3.43m	23' 9" x 11' 3"
Bedroom 1	4.27m x 3.37m	8' 2" x 11' 0"
Bedroom 2	2.54m x 3.36m	8' 4" x 11' 0"
Bathroom	3.62m x 2.18m	11' 10" x 7' 1"

Total sq ft

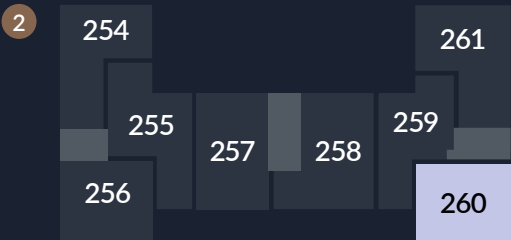
784 sqft



St: Store cupboard  
W: Wardrobe

# PLOT 260

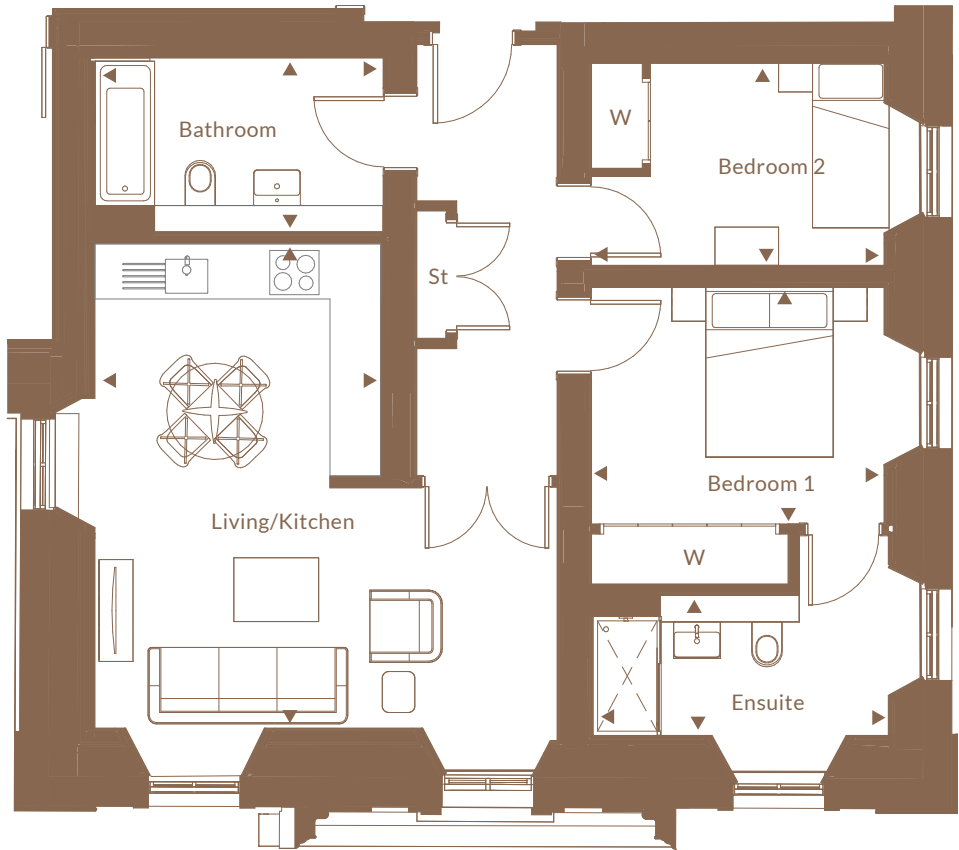
## Two bed apartment



Space	Metres	Feet/Inches
Living/Kitchen	5.42m x 5.70m	17' 9" x 18' 8"
Bedroom 1	3.45m x 2.79m	11' 3" x 9' 1"
Bedroom 2	3.45m x 2.38m	11' 3" x 7' 9"
Bathroom	3.39m x 2.05m	11' 1" x 6' 8"
Ensuite	3.45m x 2.36m	11' 3" x 7' 8"

Total sq ft

793 sqft



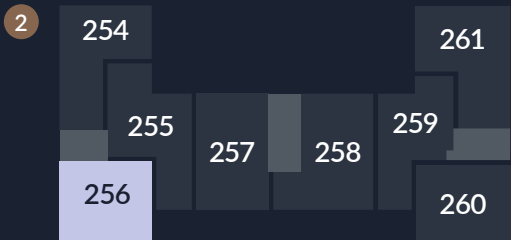
St: Store cupboard

W: Wardrobe



# PLOT 256

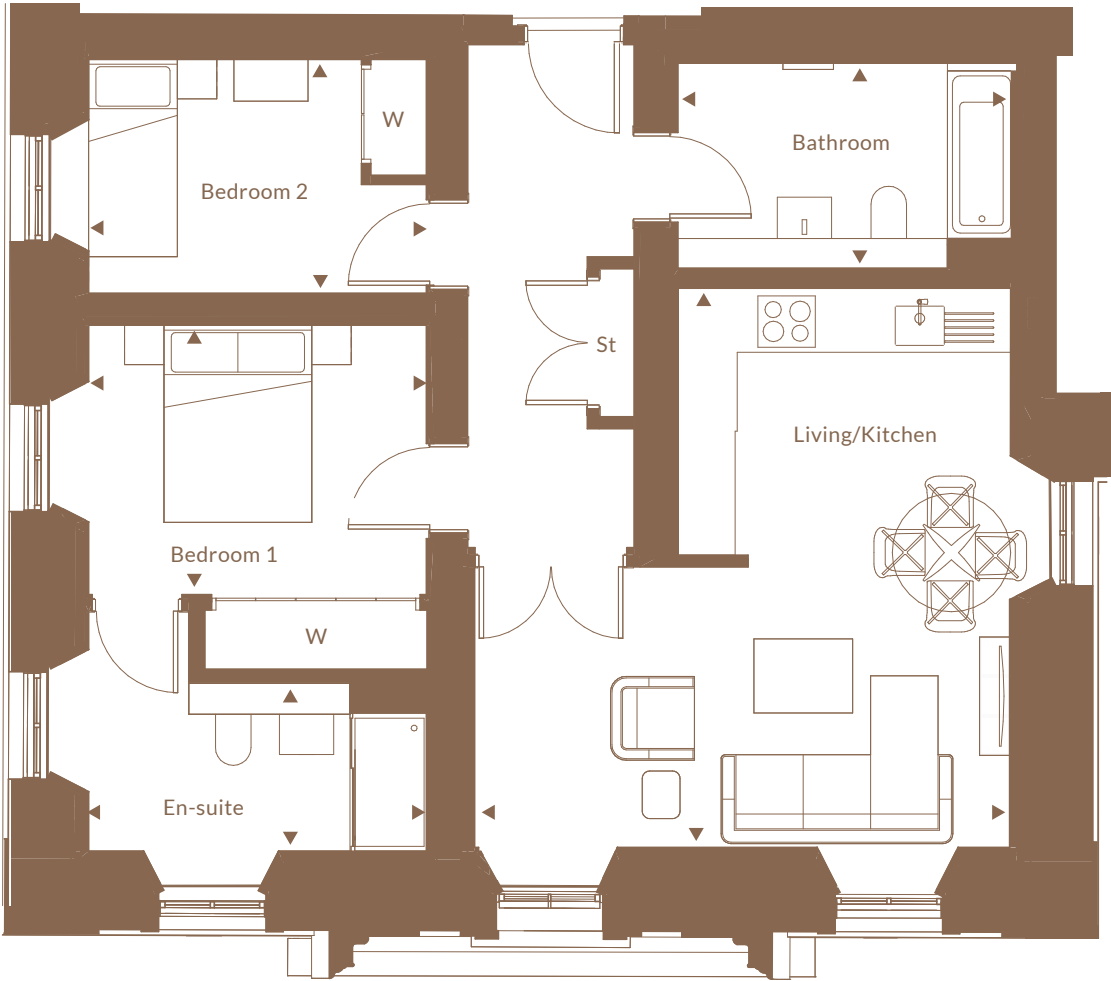
## Two bed apartment



Space	Metres	Feet/Inches
Living/Kitchen	5.42m x 5.67m	17' 9" x 18' 7"
Bedroom 1	3.42m x 2.73m	11' 3" x 8' 11"
Bedroom 2	2.76m x 2.37m	9' 1" x 7' 9"
Bathroom	3.37m x 2.08m	11' 1" x 6' 10"
Ensuite	3.42m x 1.70m	11' 3" x 5' 7"

Total sq ft

807 sqft

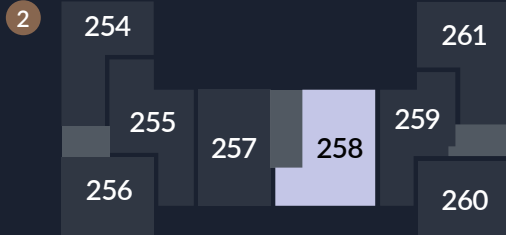


St: Store cupboard

W: Wardrobe

# PLOT 258

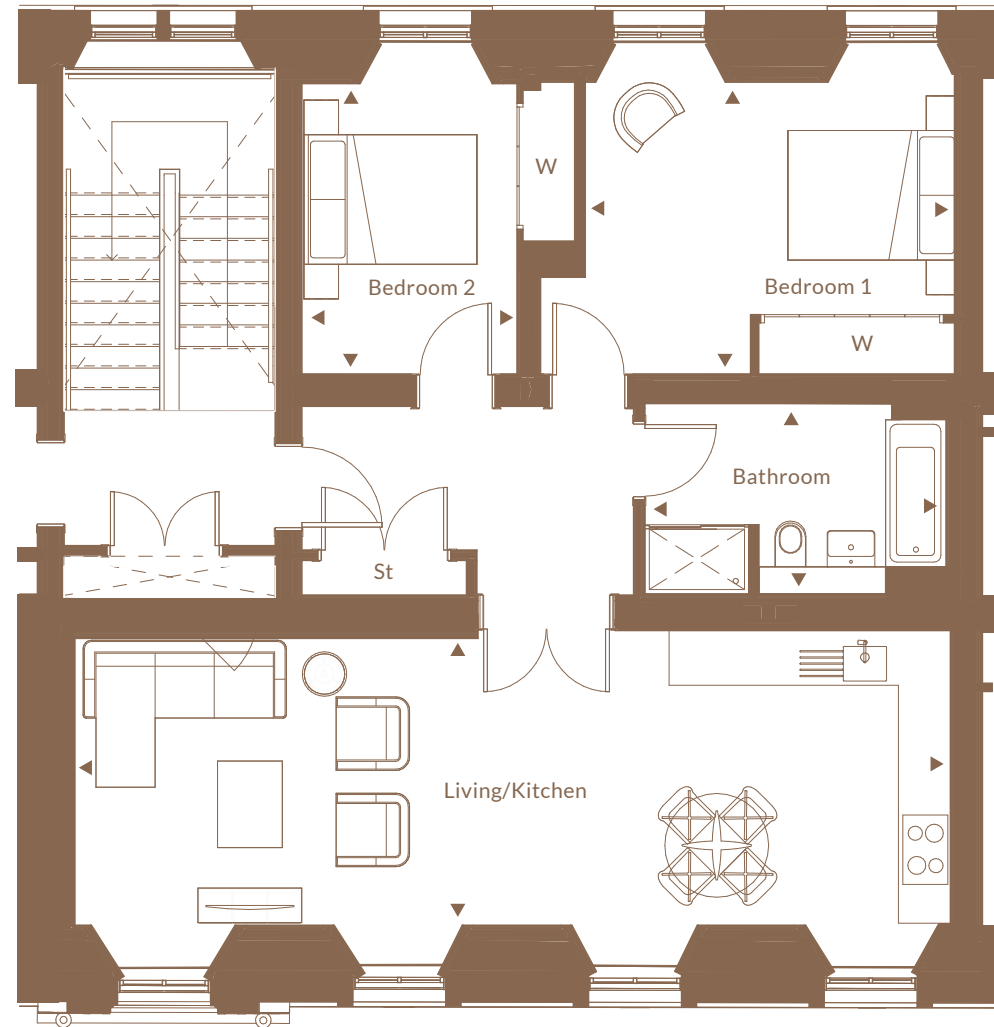
## Two bed apartment



Space	Metres	Feet/Inches
Living/Kitchen	10.12m x 3.41m	33' 2" x 11' 2"
Bedroom 1	4.27m x 3.37m	14' 0" x 11' 0"
Bedroom 2	2.49m x 3.36m	8' 2" x 11' 0"
Bathroom	3.48m x 2.20m	11' 5" x 7' 2"

Total sq ft

880 sqft



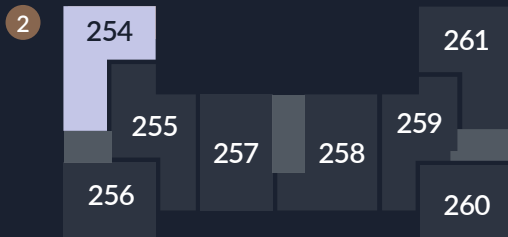
St: Store cupboard

W: Wardrobe



# PLOT 254

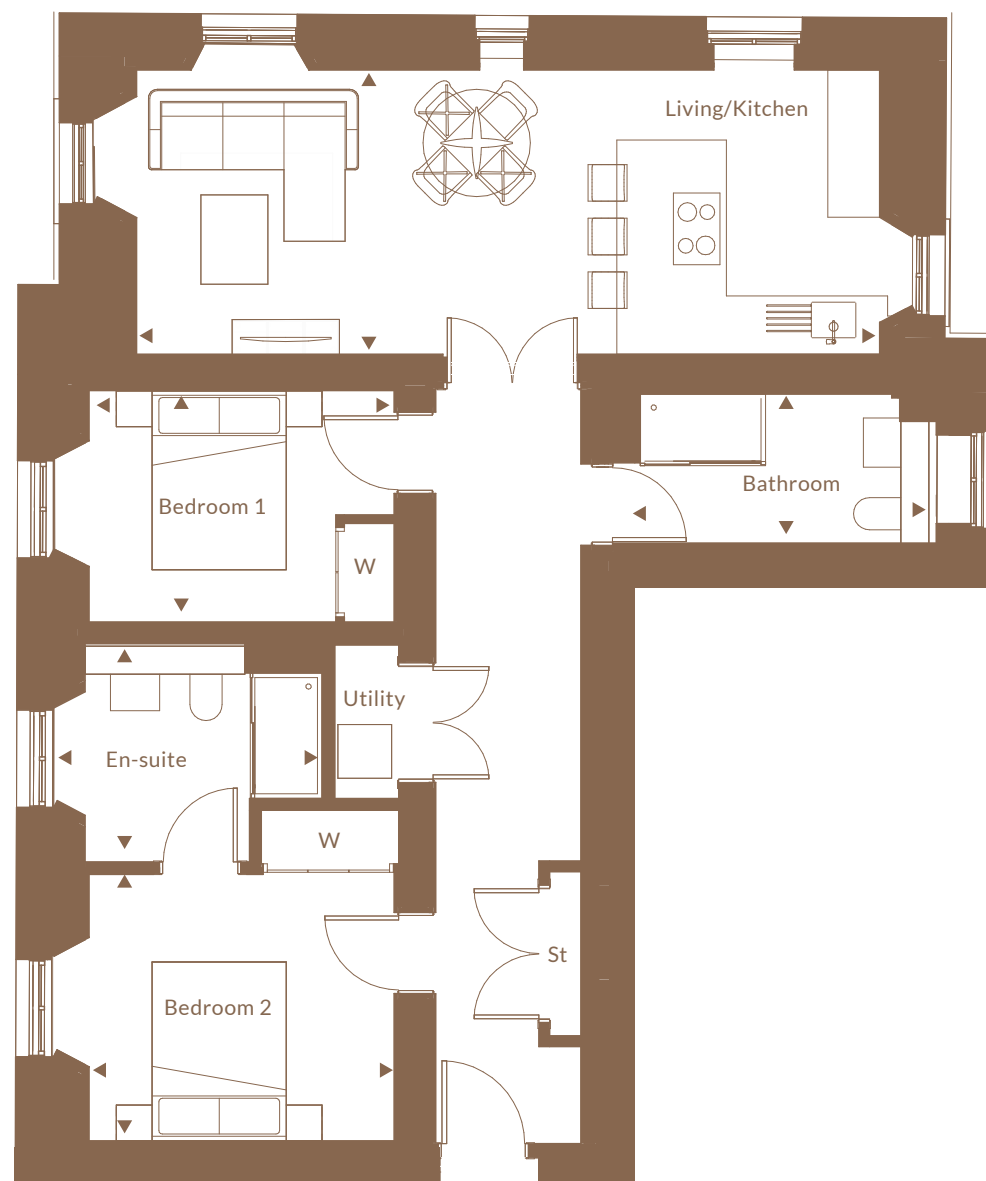
## Two bed apartment



Space	Metres	Feet/Inches
Living/Kitchen	8.31m x 3.18m	27' 3" x 10' 5"
Bedroom 1	3.41m x 2.59m	11' 2" x 8' 6"
Bedroom 2	3.41m x 2.98m	11' 2" x 9' 0"
Bathroom	3.71m x 1.67m	12' 2" x 5' 6"
Ensuite	2.65m x 2.44m	8' 8" x 8' 0"

Total sq ft

892 sqft

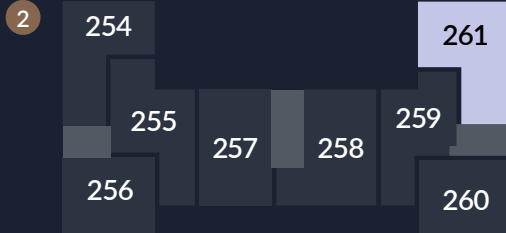


St: Store cupboard

W: Wardrobe

# PLOT 261

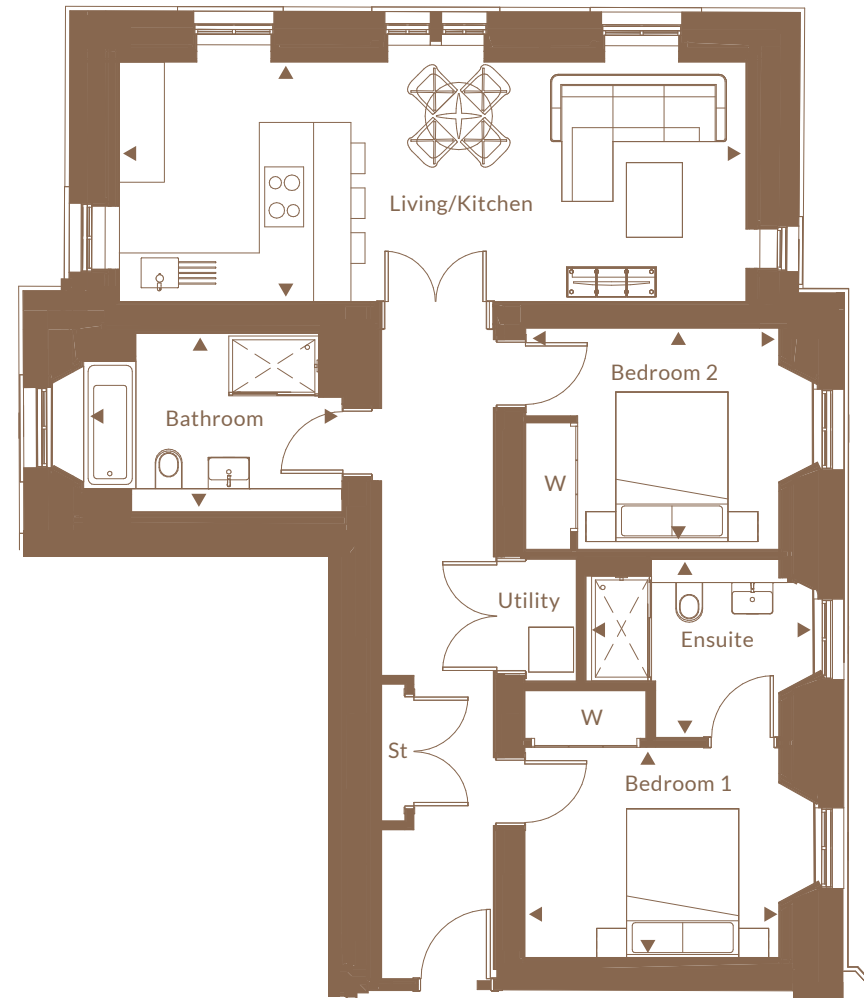
## Two bed apartment



Space	Metres	Feet/Inches
Living/Kitchen	8.38m x 3.20m	27' 6" x 10' 6"
Bedroom 1	3.39m x 2.81m	11' 1" x 9' 2"
Bedroom 2	3.38m x 2.96m	11' 1" x 9' 8"
Ensuite	2.58m x 2.39m	8' 5" x 7' 10"
Bathroom	3.46m x 2.38m	11' 4" x 7' 9"

Total sq ft

912 sqft



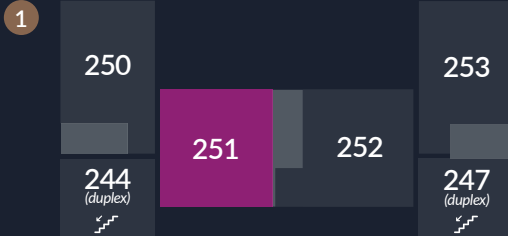
St: Store cupboard

W: Wardrobe



# PLOT 251

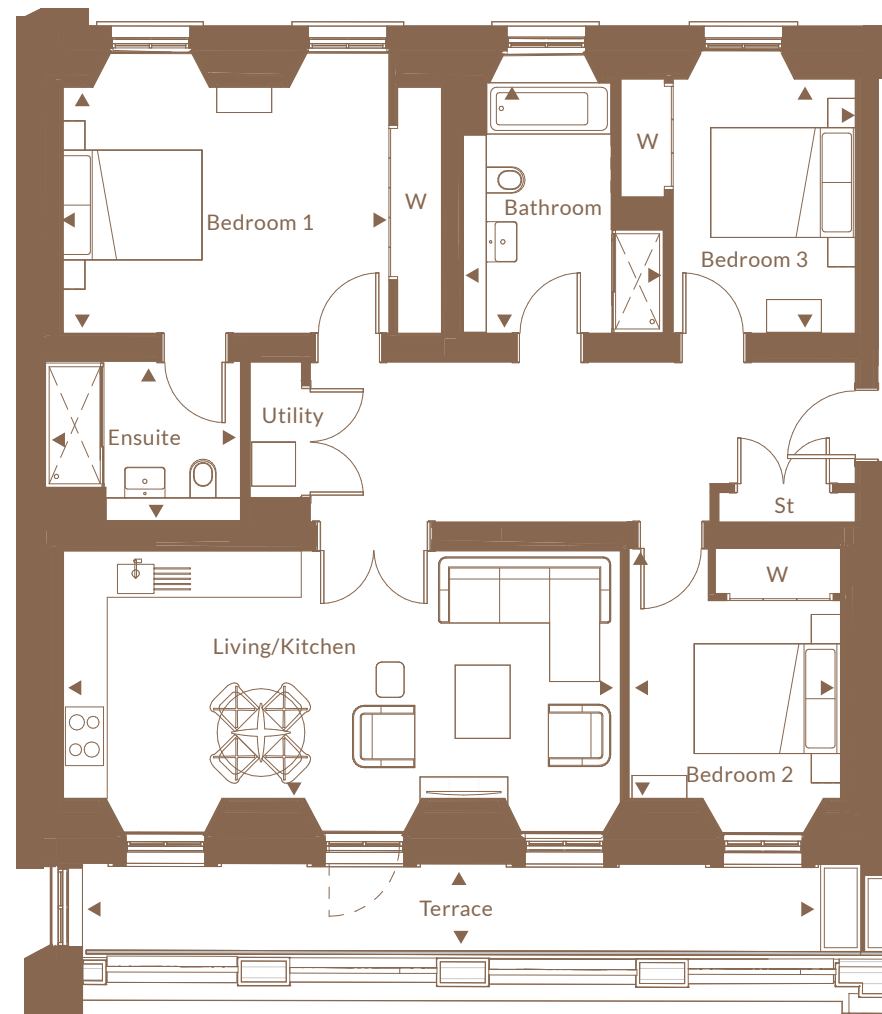
## Three bed apartment



Space	Metres	Feet/Inches
Living/Kitchen	7.61m x 3.38m	24' 11" x 11' 1"
Bedroom 1	4.45m x 3.36m	14' 7" x 11' 0"
Bedroom 2	2.89m x 3.42m	9' 5" x 11' 2"
Bedroom 3	2.49m x 3.48m	8' 2" x 11' 5"
Ensuite	2.67m x 2.18m	8' 9" x 7' 1"
Bathroom	2.02m x 3.42m	6' 7" x 11' 2"
Terrace	10.09m x 1.19m	33' 1" x 3' 10"

Total sq ft

1135 sqft

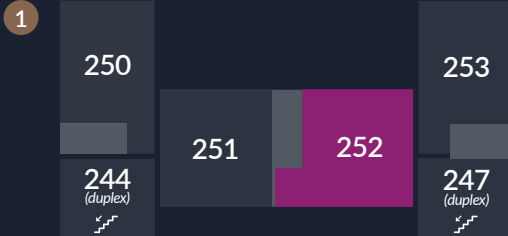


St: Store cupboard

W: Wardrobe

# PLOT 252

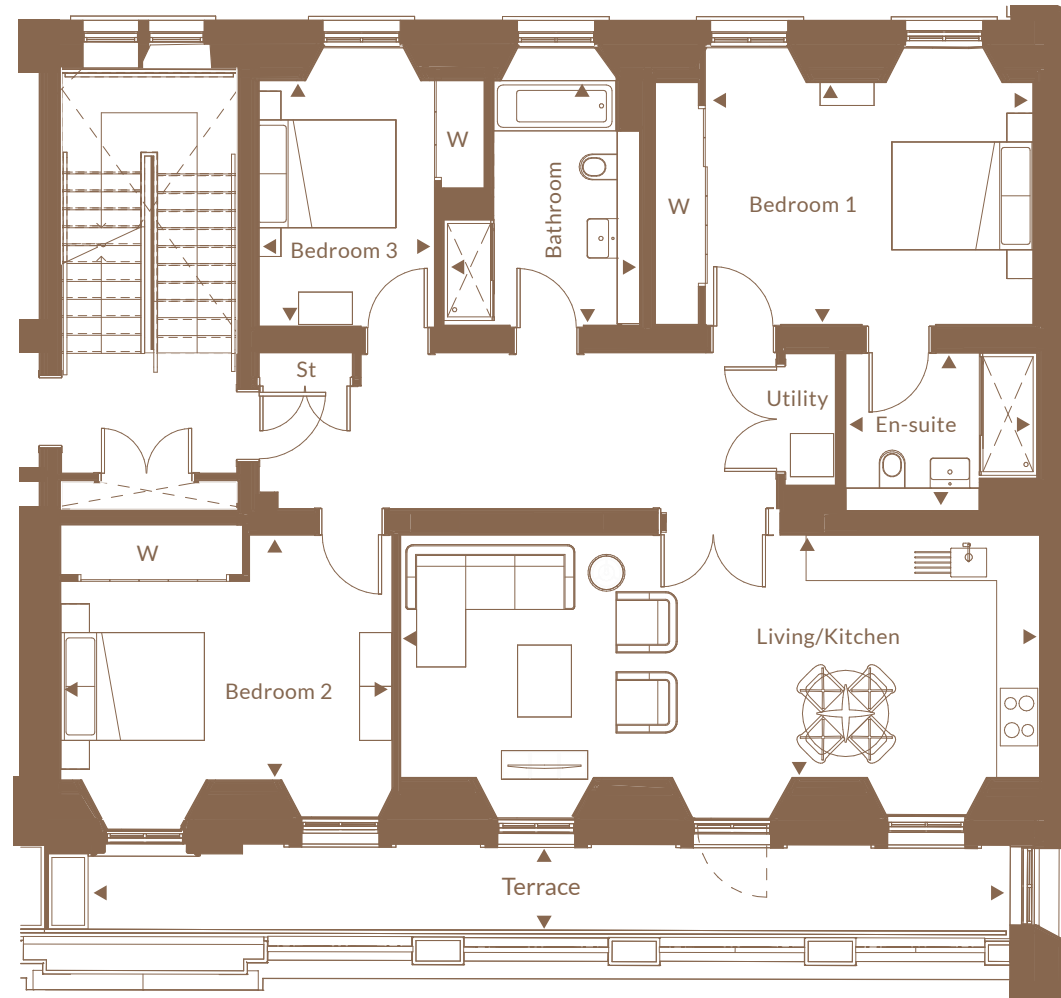
## Three bed apartment



Space	Metres	Feet/Inches
Living/Kitchen	8.89m x 3.37m	29' 2" x 11' 0"
Bedroom 1	4.59m x 3.37m	15' 0" x 11' 0"
Bedroom 2	4.61m x 3.41m	15' 1" x 11' 2"
Bedroom 3	2.44m x 3.40m	8' 0" x 11' 1"
Bathroom	2.73m x 3.40m	8' 11" x 11' 1"
Ensuite	2.66m x 2.19m	8' 8" x 7' 2"
Terrace	12.83m x 1.19m	42' 1" x 3' 10"

Total sq ft

1234 sqft



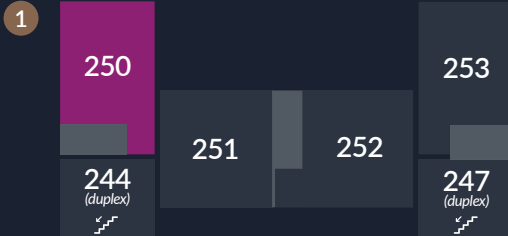
St: Store cupboard

W: Wardrobe



# PLOT 250

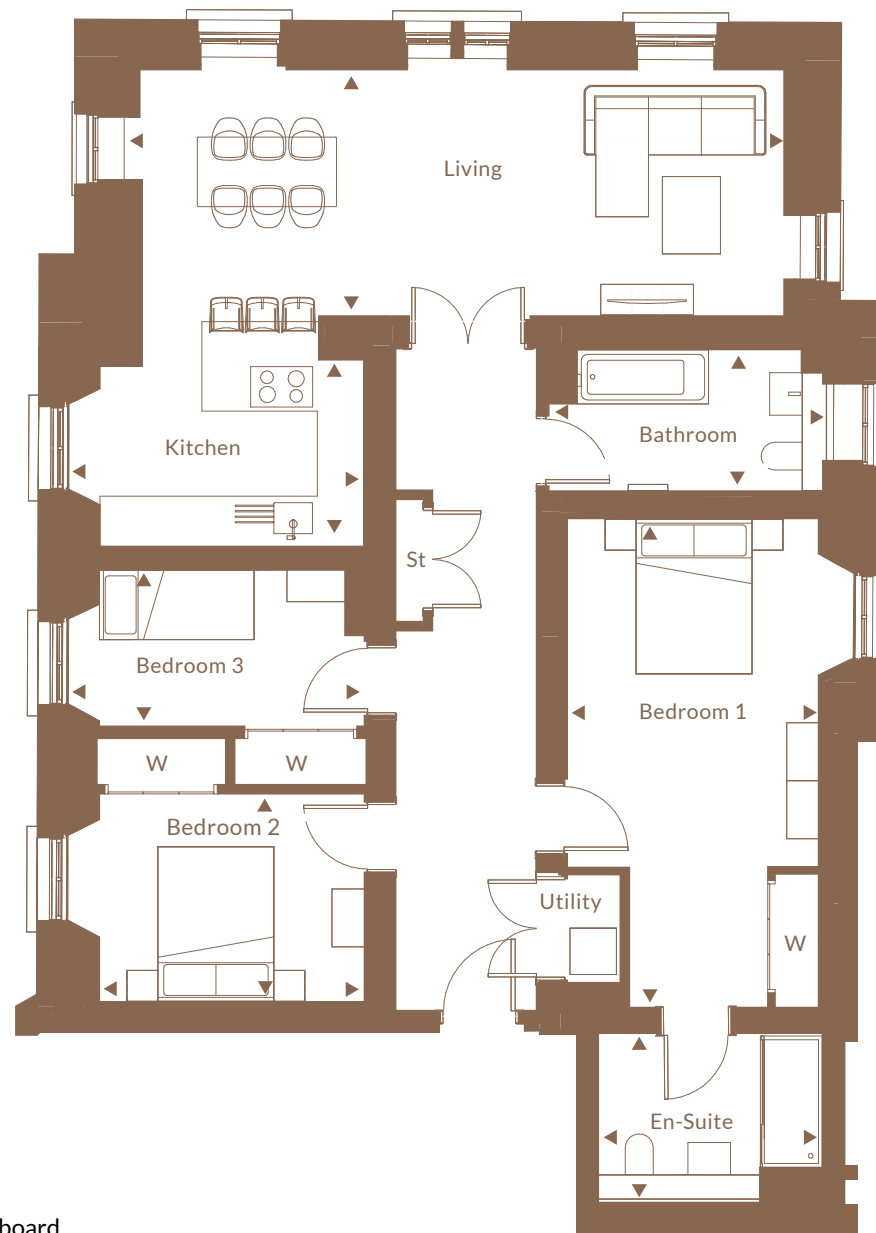
## Three bed apartment



Space	Metres	Feet/Inches
Living	8.33m x 3.18m	27' 4" x 10' 5"
Kitchen	3.41m x 2.42m	11' 2" x 7' 11"
Bedroom 1	3.25m x 6.32m	8" x 20' 9"
Bedroom 2	3.34m x 2.69m	11' 3" x 8' 10"
Bedroom 3	3.43m x 2.02m	11' 3" x 6' 7"
Bathroom	3.54m x 1.82m	11' 8" x 5' 12"
Ensuite	2.90m x 2.19m	9' 7" x 7' 2"

Total sq ft

1253 sqft

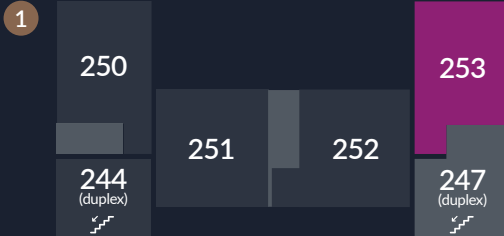


St: Store cupboard

W: Wardrobe

# PLOT 253

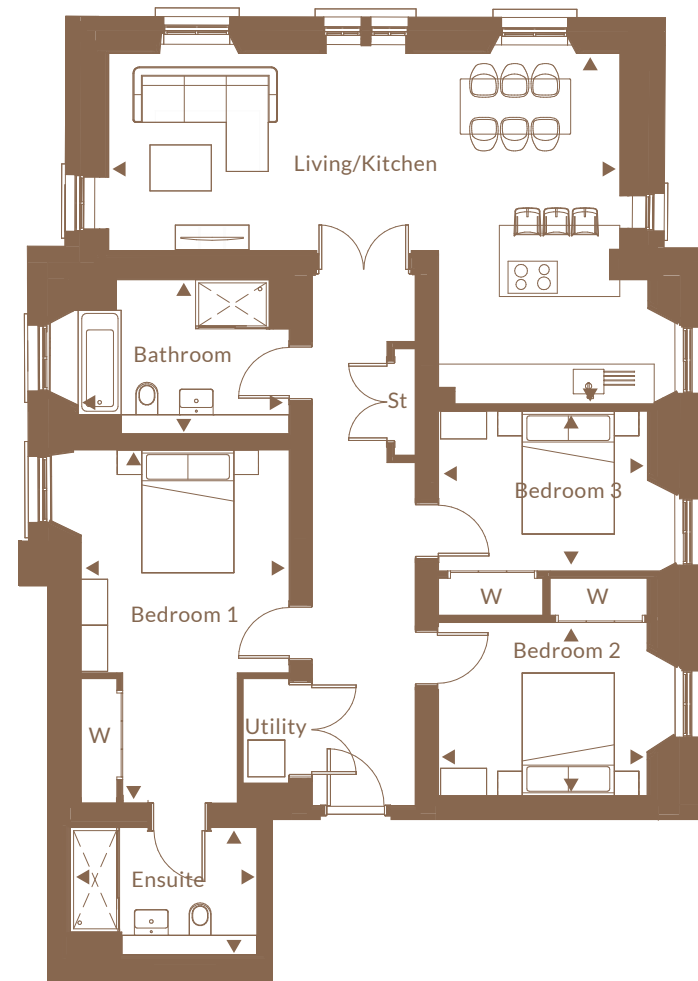
## Three bedroom apartment



Space	Metres	Feet/Inches
Living/Kitchen	8.32m x 5.71m	27' 3" x 18' 8"
Bedroom 1	3.39m x 5.75m	11' 1" x 18' 10"
Bedroom 2	3.38m x 2.96m	11' 1" x 9' 8"
Bedroom 3	3.40m x 2.60m	11' 1" x 8' 6"
Bathroom	3.5m x 2.5m	11' 5" x 8' 2"
Ensuite	3.04m x 2.07m	9' 11" x 6' 9"

Total sq ft

1254 sqft

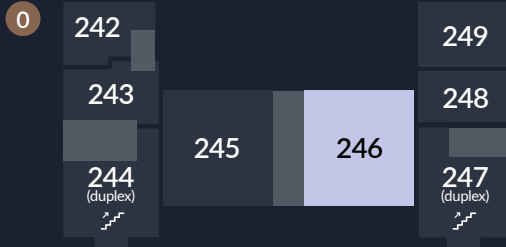


St: Store cupboard

W: Wardrobe

# PLOT 246

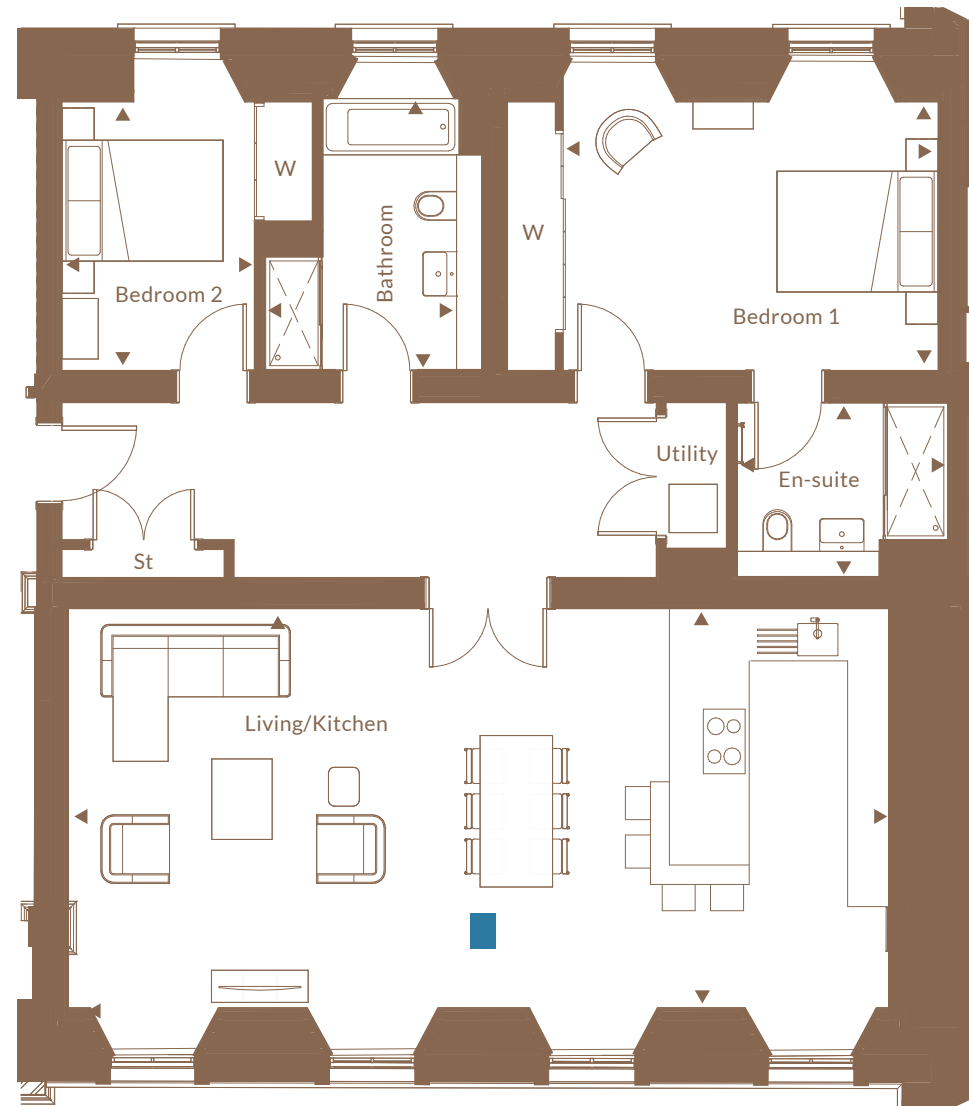
## Two bed apartment



Space	Metres	Feet/Inches
Living/Kitchen	10.18m x 4.95m	33' 4" x 16' 2"
Bedroom 1	4.65m x 3.34m	15' 3" x 10' 11"
Bedroom 2	2.39m x 3.33m	7' 10" x 10' 11"
Ensuite	2.61m x 2.16m	8' 6" x 7' 1"
Bathroom	2.69m x 3.36m	8' 9" x 11' 0"

Total sq ft

1280 sqft



St: Store cupboard

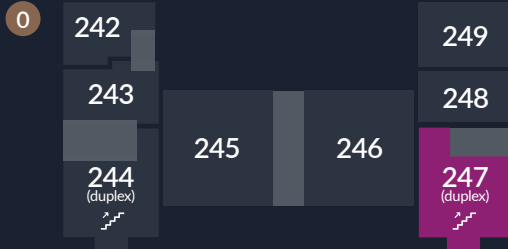
W: Wardrobe

■ Pillar



# PLOT 247

## Three bedroom duplex apartment

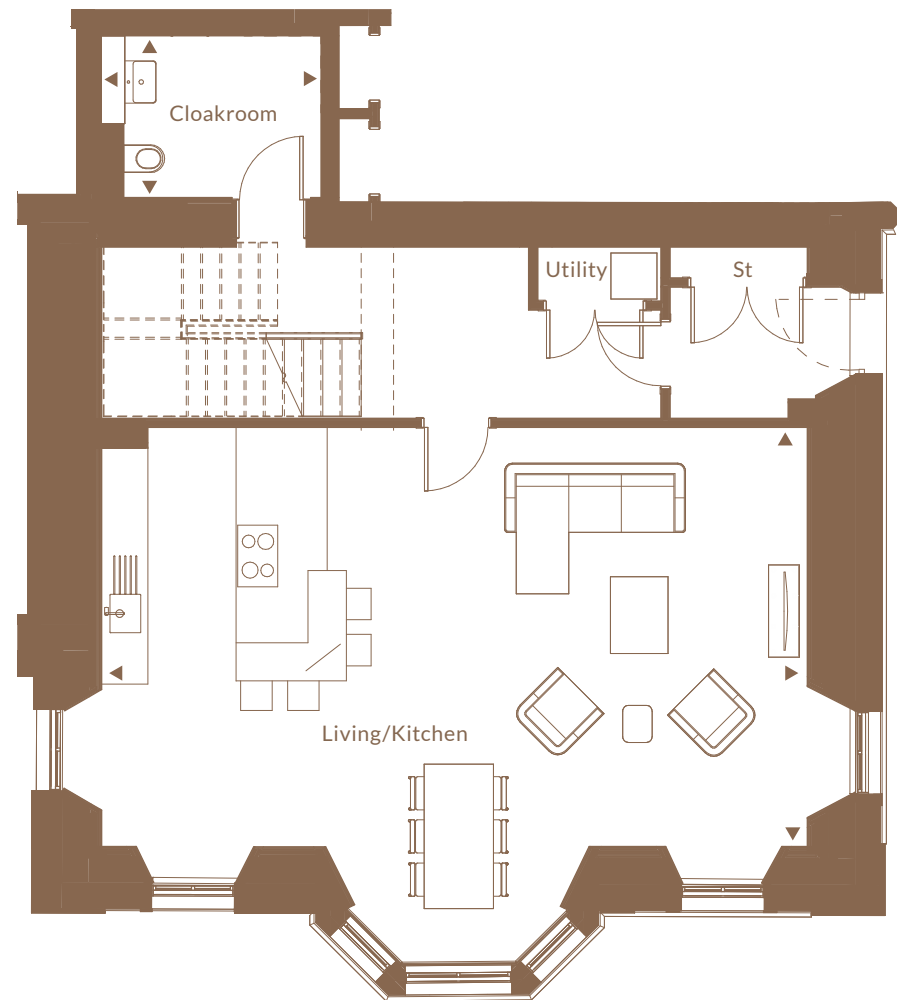


Space	Metres	Feet/Inches
Living/Kitchen	9.18m x 5.45m	30' 1" x 17' 10"
Cloakroom	2.88m x 2.10m	9' 5" x 6' 10"

Total sq ft

Level 1 = 898 sqft

Overall area = 1689 sqft

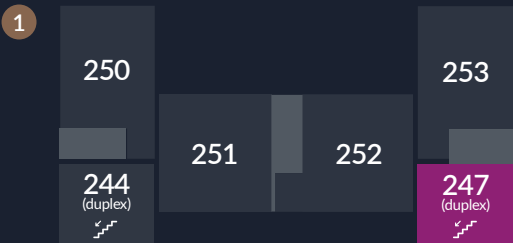


St: Store cupboard

W: Wardrobe

# PLOT 247

Three bedroom  
duplex apartment

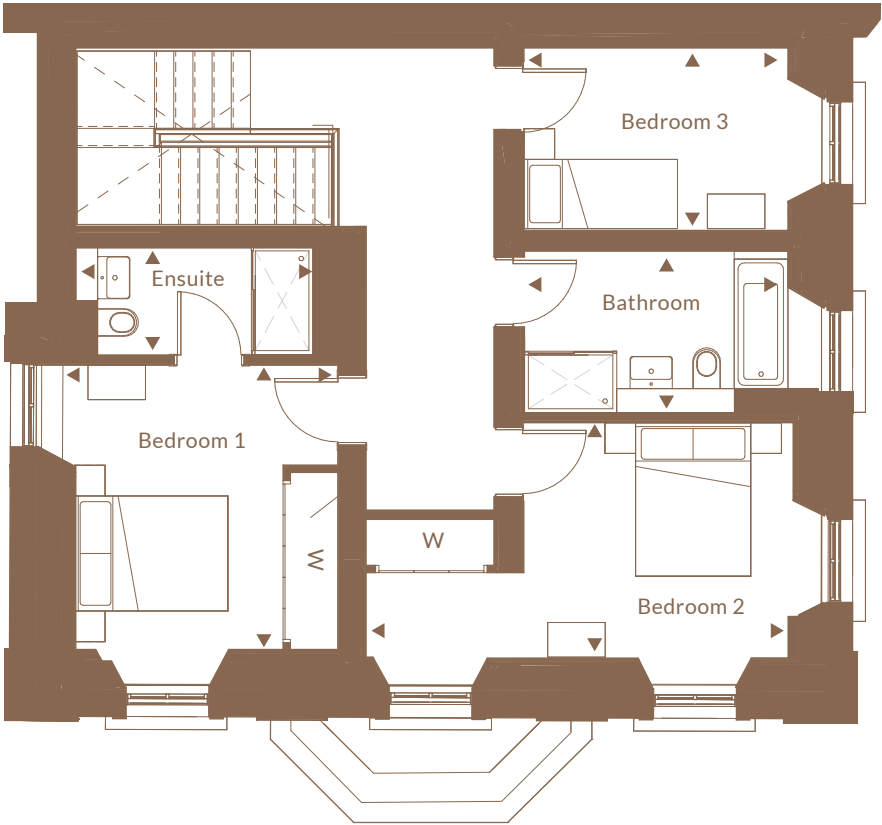


Space	Metres	Feet/Inches
Bedroom 1	3.41m x 3.70m	11' 2" x 12' 1"
Bedroom 2	5.49m x 3.06m	18' 0" x 10' 0"
Bedroom 3	3.44m x 2.38m	11' 3" x 7' 9"
Ensuite	3.09m x 1.39m	10' 1" x 4' 6"
Bathroom	3.43m x 2.10m	11' 3" x 6' 10"

Total sq ft

Level 1 = 791 sqft

Overall area = 1689 sqft

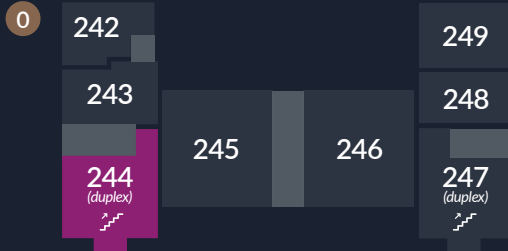


St: Store cupboard

W: Wardrobe

# PLOT 244

## Three bedroom duplex apartment

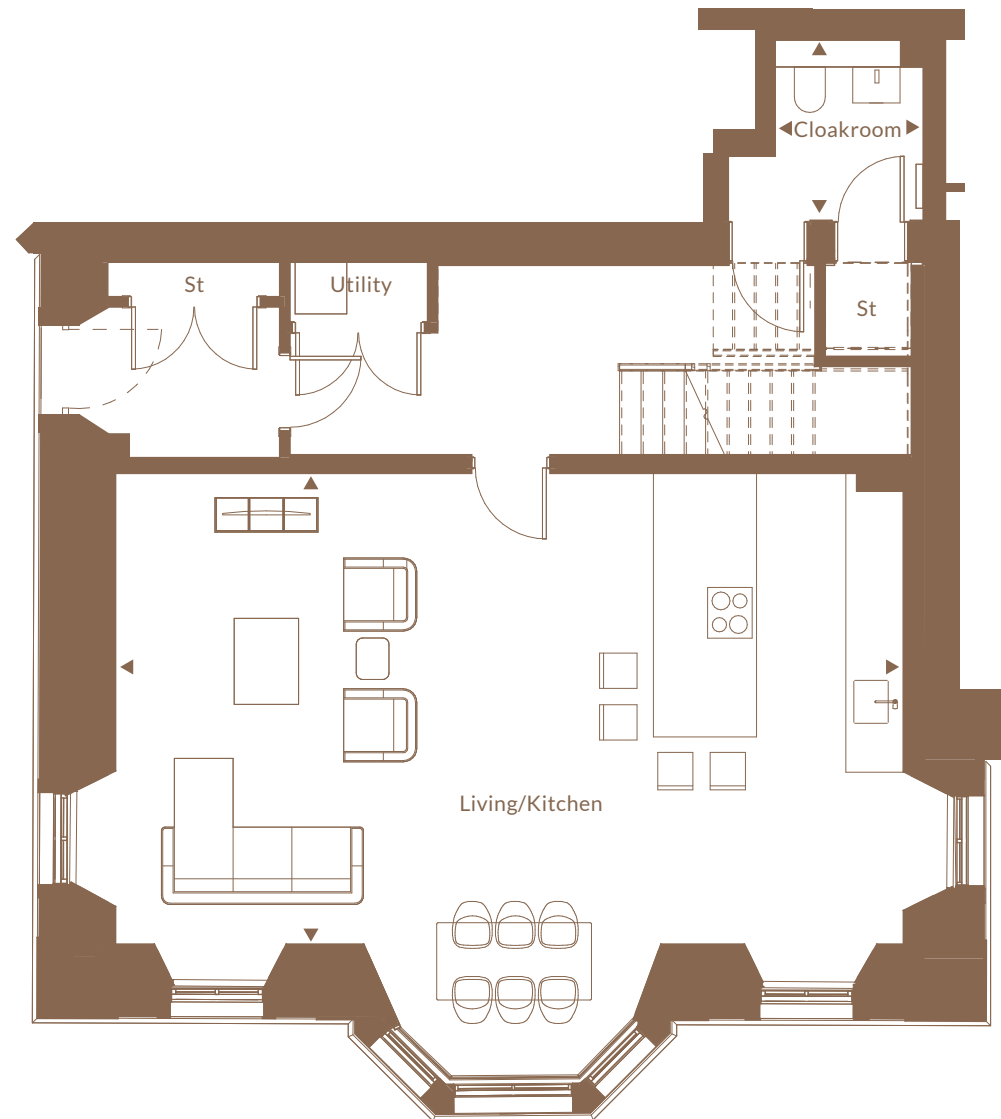


Space	Metres	Feet/Inches
Living/Kitchen	9.16m x 5.48m	30' 1" x 17' 12"
Cloakroom	1.72m x 2.10m	5' 10" x 6' 11"

Total sq ft

Level 0 = 884 sqft

Overall area = 1691 sqft



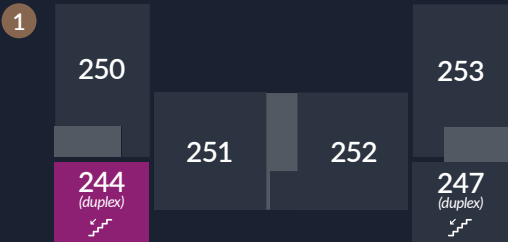
St: Store cupboard

W: Wardrobe



# PLOT 244

Three bedroom  
duplex apartment

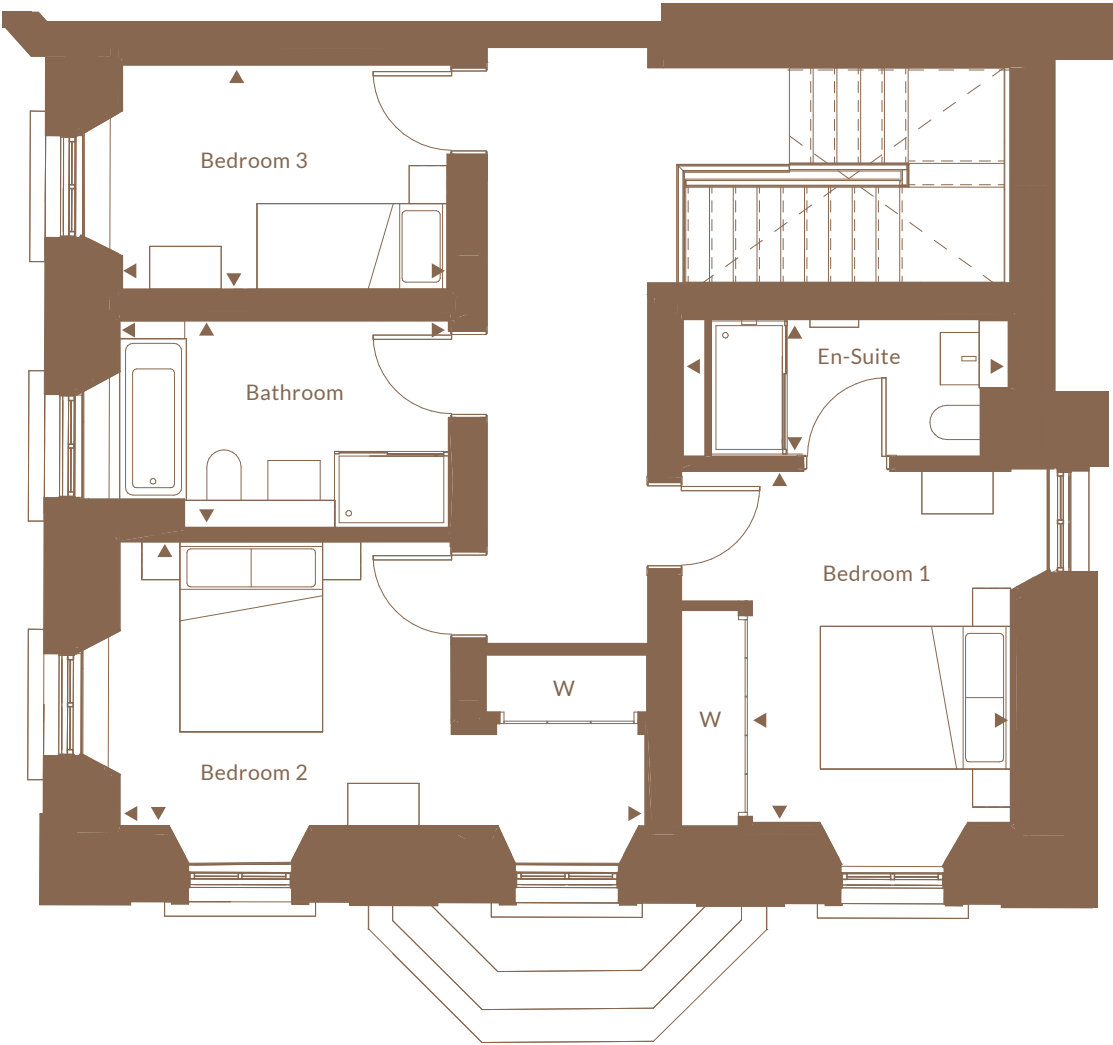


Space	Metres	Feet/Inches
Bedroom 1	2.72m x 3.69m	8' 11" x 12' 1"
Bedroom 2	5.52m x 2.99m	18' 1" x 9' 6"
Bedroom 3	3.41m x 2.36m	11' 3" x 7' 9"
Ensuite	3.42m x 1.44m	11' 3" x 4' 9"
Bathroom	3.56m x 2.17m	11' 4" x 7' 1"

Total sq ft

Level 1 = 807 sqft

Overall area = 1691 sqft

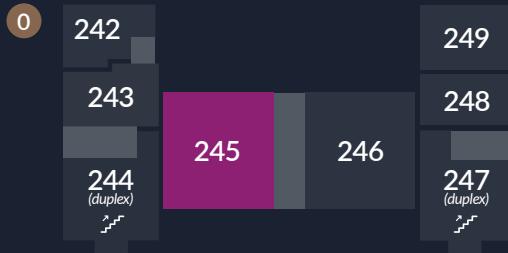


St: Store cupboard

W: Wardrobe

## PLOT 245

Three bed apartment



Details coming soon

# COMING SOON

# SPECIFICATION

## The Graham House Apartments

### Kitchens

- Stylish German crafted kitchens by Nolte
- Silestone worktops with undermount sink in gunmetal finish
- Siemens built-in single oven
- Siemens built-in microwave combination oven  
(Plots 244, 245, 247, 250, 251, 252 & 253 only)
- Siemens 4 zone induction hob  
(Plots 242, 243, 248, 249, 255, 256, 257, 258, 259 & 260 only)
- Siemens 5 zone induction hob  
(Plots 251 & 252 only)
- Siemens 800mm venting hob  
(Plots 244, 245, 246, 247, 250, 253, 254 & 261 only)
- Siemens integrated fridge/freezer
- Siemens integrated dishwasher
- Siemens integrated washer/dryer  
(Plots 242, 248, 249, 255, 256, 257, 258, 259 & 260 only)
- Bosch freestanding washer/dryer  
(Plots 243, 244, 245, 246, 247, 250, 251, 252, 253, 254 & 261 only)
- Under unit LED lighting

### Bathrooms

- Contemporary white sanitaryware from the Laufen range and baths by Carron
- Contemporary slimline mixer taps
- Under sink Laufen vanity units to main bathroom and en-suite
- Full height wall tiling by Porcelanosa to bath and shower enclosure
- Thermostatic shower to main bathroom and en-suites
- Thermostatic combination bath filler and handheld spray to baths
- Shaver sockets to all bathrooms and en-suites
- Stylish towel warmers to all bathrooms and en-suites
- Fitted mirror with demist pad above wash hand basin in bathrooms and en-suites

### Decoration

- Internal walls and ceilings will be finished in white emulsion
- Pre-finished white pass doors internally
- Contemporary lever style handles
- Gloss white paint to all woodwork (including frames, facings, skirtings, cills & aprons)



# SPECIFICATION

## The Graham House Apartments

### Wardrobes

- Stylish fitted wardrobes with shelves and hanging rails as design dictates

### Heating & Electrical

- Communal District Heating System
- Horizontal and/or vertical radiator styles (as apartment design dictates)
- Master TV media plate in main lounge with CAT 6 cabling
- Communal satellite dish to apartments (connection required)
- Ample power, TV and telephone points throughout
- USB & USBC charging points in selected rooms
- Hyperoptic and BT Openreach fibre installations

### Security

- Video door entry and access control system (where applicable)
- Intruder alarm system to ground floor apartments with external access
- Mains powered smoke detectors
- LED lighting to corridors and stairwells

### External and Common Areas

- Allocated private external parking
- External bike shelter with individual bike racks

### Factor

- An annual factors fee will be payable by all residents at Jordanhill Park. Please consult our Sales Consultant for full details
- All properties covered by 10 year Q Policy warranty



## ABOUT CALA

For 150 years, CALA has been a name synonymous with style, elegance and quality. Across the decades we have secured a firm foothold as one of the UK's premier homebuilders. With this highly coveted position comes responsibility, and so we take great pride in providing premium homes in some of the UK's most sought-after areas.

CALA operates nationally through eight regional businesses, three in Scotland covering the principal cities of Edinburgh, Glasgow and Aberdeen, with our Scottish headquarters in Edinburgh, four within the Home Counties, including our southern headquarters at Beaconsfield in Buckinghamshire, and an eighth in the Midlands.

From conservation area to brownfield development, we are driven by new challenges, selecting prime locations in which to build exceptional properties.

---

**IMPORTANT NOTICE TO CUSTOMERS:** The Consumer Protection from Unfair Trading Regulations 2008. CALA Homes (West) Limited operate a policy of continual product development and the specifications outlined in this brochure are indicative only. Any alterations to the specifications will be of equal or greater value and CALA reserves the right to implement changes to the specifications without warning. Whilst these particulars are prepared with all due care for the convenience of intending purchasers, the information is intended as a preliminary guide only. As with photographs/illustrations in this brochure, the display material in our customer reception is provided purely as a guide, indicating a typical style of a property. The computer generated images and photographs do not necessarily represent the actual finishings/elevation or treatments, furnishings and fittings at this development. Room measurements are approximate only. Floor plans, dimensions and specifications are correct at the time of print. The illustrated location map is a general guide only. For specific particulars, please speak to a CALA representative at the development for the most up-to-date information. Please note that distances and timings referred to in this brochure are approximate and sourced from Google Maps. For information relating to weather in the area of this development, please refer to the Meteorological Office ([www.metoffice.gov.uk](http://www.metoffice.gov.uk)). Nothing contained in this brochure shall constitute or form part of any contract. Information contained in this brochure is accurate at the time of going to publication on 27.03.25

CALA (West) Limited, registered in Scotland company number SC222577. Registered office: Johnstone House, 52-54 Rose Street, Aberdeen AB10 1HA: Agent of CALA Management Limited.

CALA continues to set standards, seeking out new directions in design, incorporating the very latest ideas in architecture and embracing cutting edge innovation. From a one bedroom apartment to a six-bedroom family mansion, we will always apply the same exacting standards of quality, craftsmanship and attention to detail, for which we are renowned.

With highly acclaimed developments throughout the country, CALA takes great care to ensure that we remain sensitive to the areas we develop, taking inspiration from our surroundings and creating properties with both poise and purpose, reflective of local history and habitat. CALA places ultimate emphasis on the needs of our customers, surpassing their expectations, for decades to come.

---

## Enquire about life at Jordanhill Park

📞 0141 319 8988  
🌐 [www.jordanhillpark.com](http://www.jordanhillpark.com)  
✉ [jordanhillpark@cala.co.uk](mailto:jordanhillpark@cala.co.uk)





