



# The Allan

3 bedroom terraced home



Computer generated image - The Allan

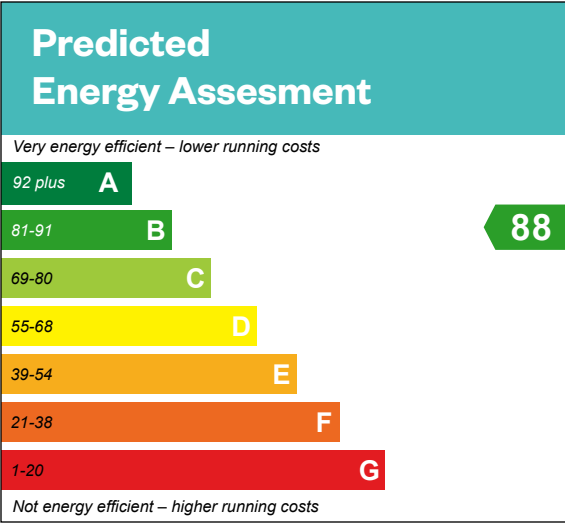


# The Allan

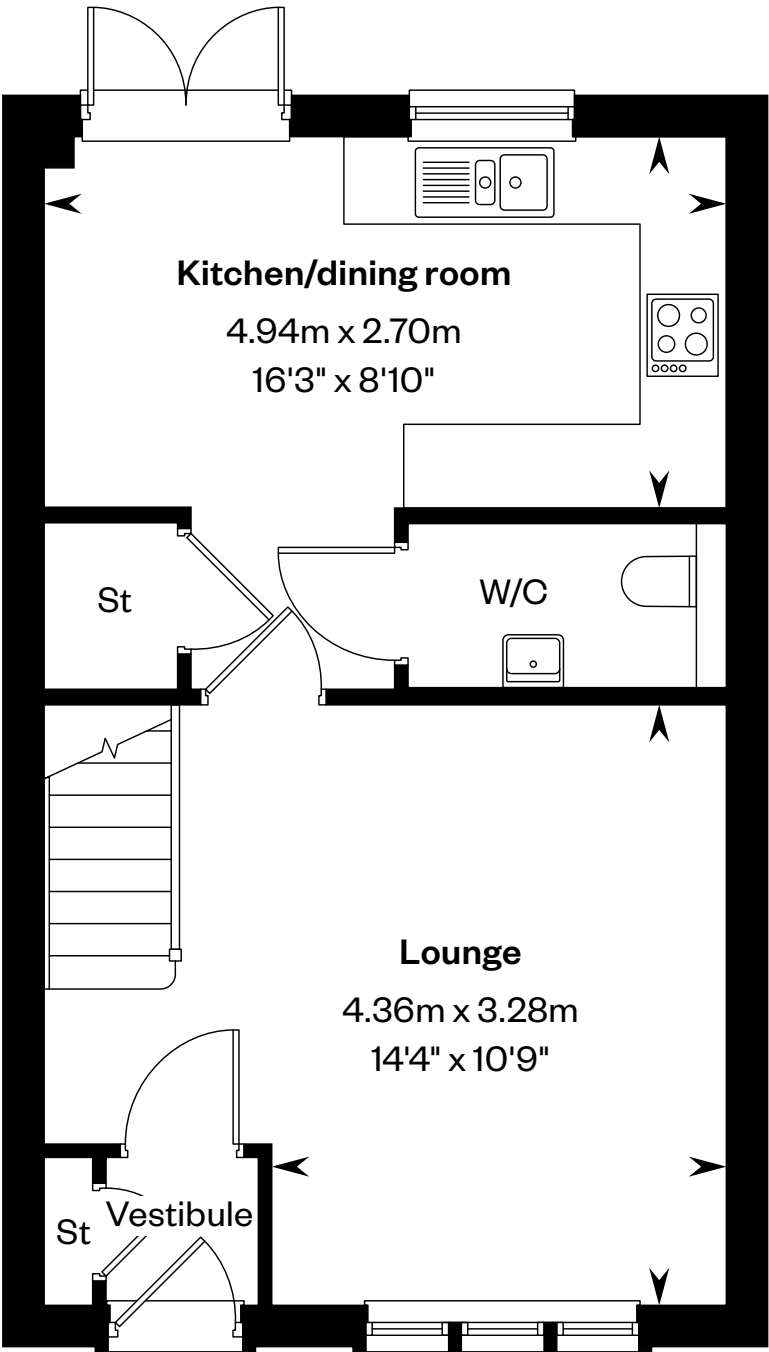
## 3 bedroom terraced home

Plots 2, 3, 58, 59. 62 & 63 – as shown

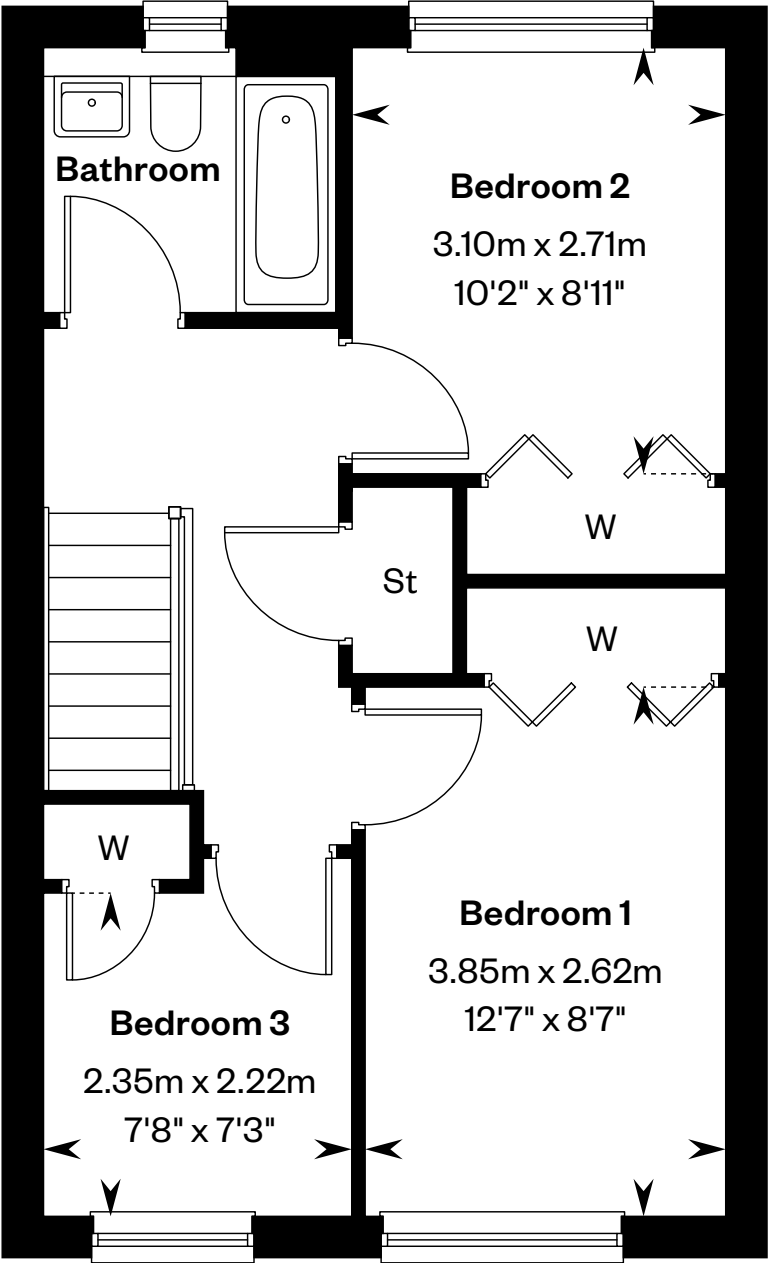
Plots 4, 60, 61 & 64 – handed



This is a Predicted Energy Assessment for properties that are incomplete. Once the property is completed, this rating will be updated and an official Energy Performance certificate will be created for the property.



Ground floor



First floor

Please ask your Sales Consultant for further details. St: Store cupboard. W: Wardrobe.

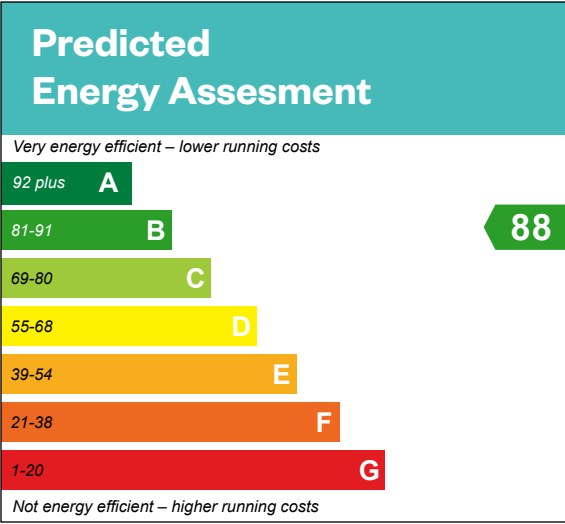
IMPORTANT NOTICE TO CUSTOMERS: The Consumer Protection from Unfair Trading Regulations 2008. Cala Homes (East) Limited operates a policy of continual product development and the specifications outlined in this brochure are indicative only. The computer generated images and photographs do not necessarily represent the actual finishings/elevation or treatments, landscaping, furnishings and fittings at this development. Information contained is accurate at date of publication on 28.04.25. See the main brochure for the full Consumer Protection statement.

# The Allan

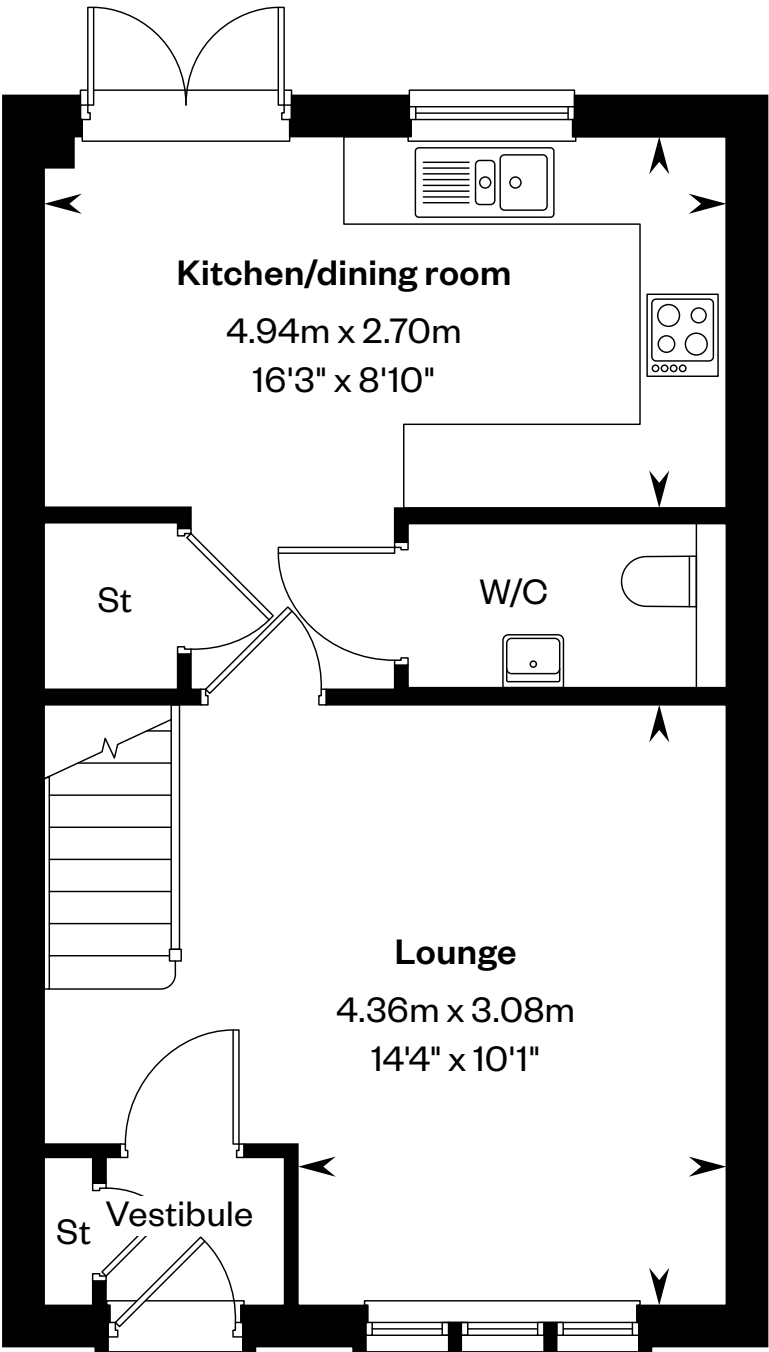
## 3 bedroom terraced home

Plots 6, 7, 9, 10, 12, 21, 22, 23, 25, 26, 37, 49,  
54, 55, 72, 104, 105 & 106 – as shown

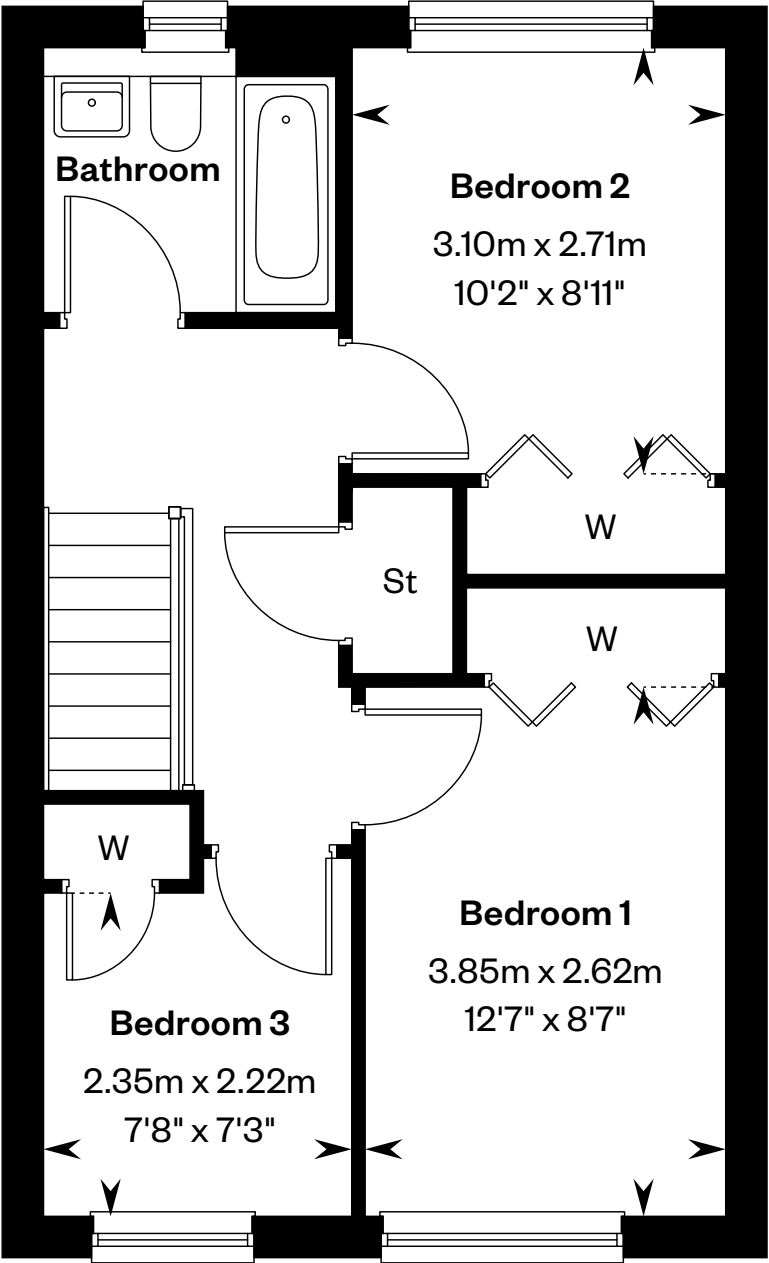
Plots 11, 24, 27, 38, 52, 56, 57, 69, 70, 71  
& 103 – handed



This is a Predicted Energy Assessment for properties that are incomplete. Once the property is completed, this rating will be updated and an official Energy Performance certificate will be created for the property.



Ground floor



First floor

Please ask your Sales Consultant for further details. St: Store cupboard. W: Wardrobe.

IMPORTANT NOTICE TO CUSTOMERS: The Consumer Protection from Unfair Trading Regulations 2008. Cala Homes (East) Limited operates a policy of continual product development and the specifications outlined in this brochure are indicative only. The computer generated images and photographs do not necessarily represent the actual finishings/elevation or treatments, landscaping, furnishings and fittings at this development. Information contained is accurate at date of publication on 28.04.25. See the main brochure for the full Consumer Protection statement.





# The Arran

3 bedroom terraced home



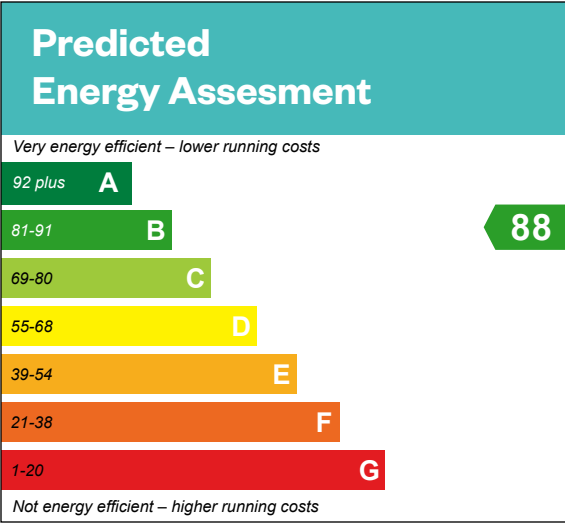


# The Arran

## 3 bedroom terraced home

Plots 13, 48, 53, 65, 68 – as shown

Plots 1, 5, 8, 50, 51, 107 – handed







# The Barrie

4 bedroom detached home











# The Bryce

4 bedroom detached home



Computer generated image - The Bryce

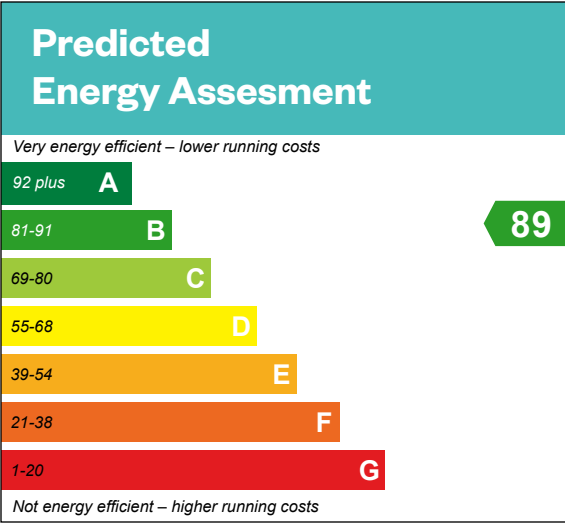


# The Bryce

## 4 bedroom detached home

Plots 73, 82, 92, 95 – as shown

Plots 36, 44, 81, 98, 102 – handed







# The Cairn

4 bedroom detached home











# The Colville

4 bedroom detached home with study



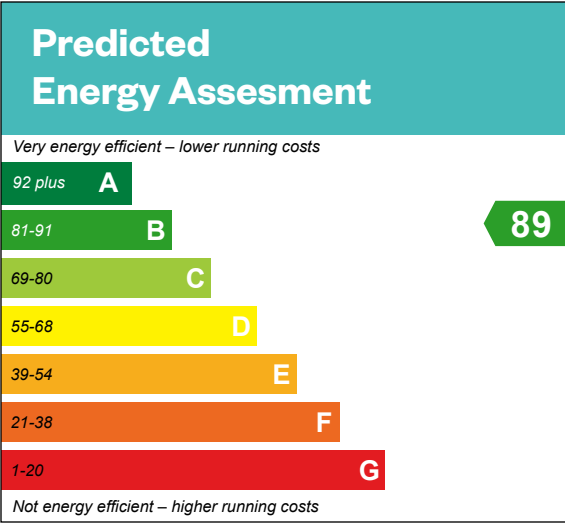


# The Colville

4 bedroom detached home with study

Plots 45, 75, 84 & 93 – as shown

Plots 67, 78 & 79 – handed







# The Crichton

5 bedroom detached home



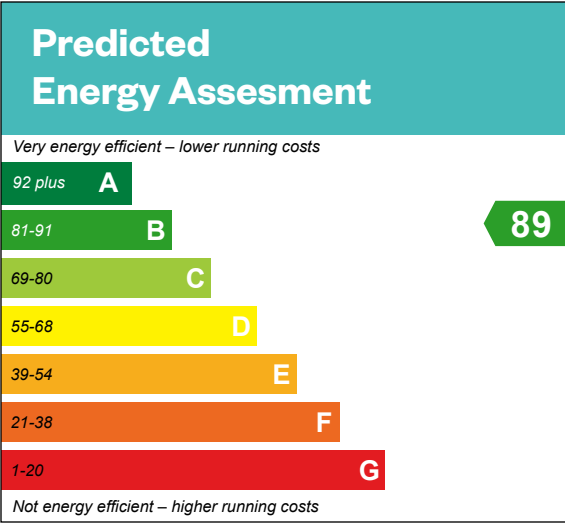


# The Crichton

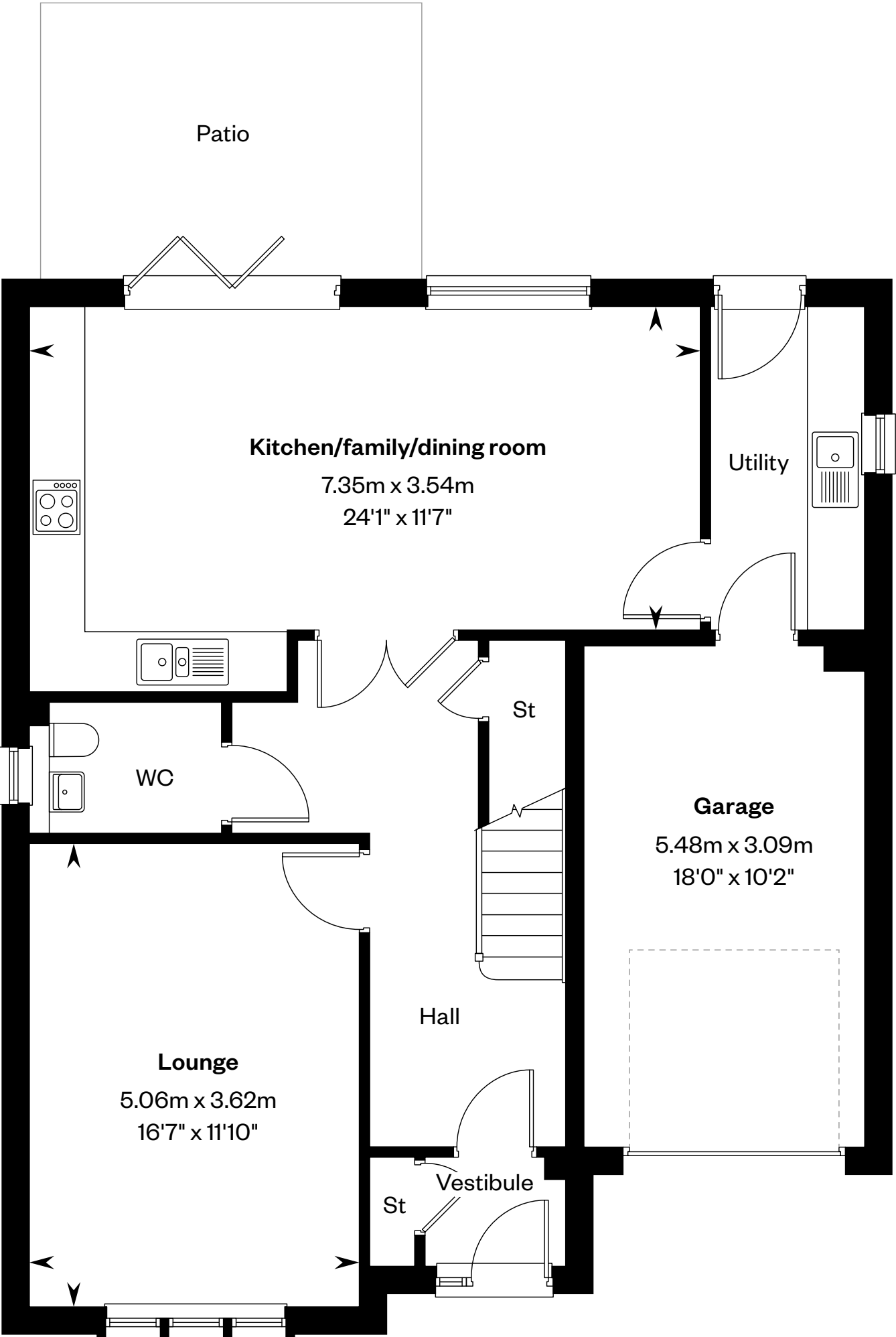
## 5 bedroom detached home

Plots 30, 33, 41, 80, 90, 91, 99 & 108 – as shown

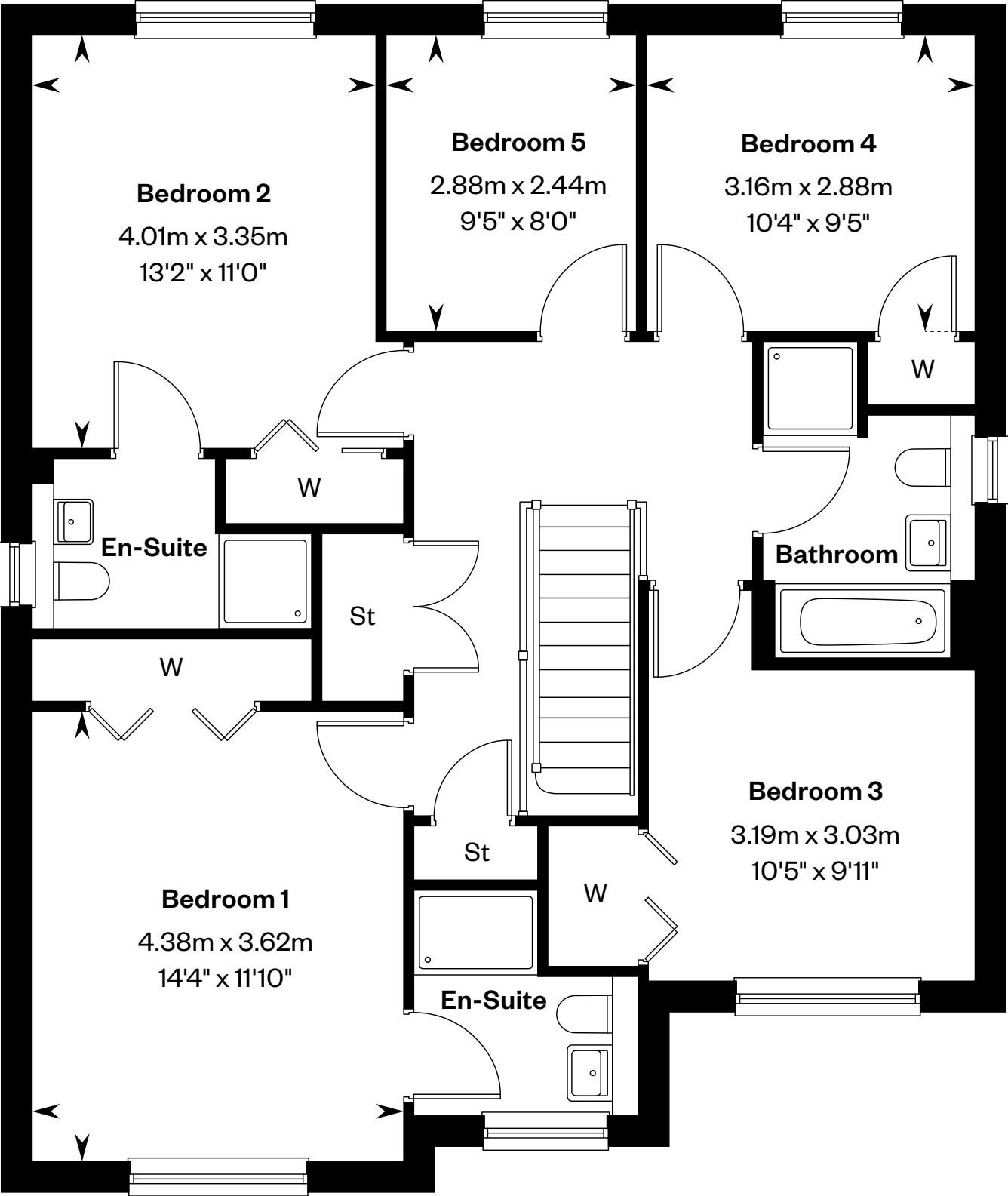
Plots 74, 85, 94 & 113 – handed



This is a Predicted Energy Assessment for properties that are incomplete. Once the property is completed, this rating will be updated and an official Energy Performance certificate will be created for the property.



Ground floor



First floor

Please ask your Sales Consultant for further details. St: Store cupboard. W: Wardrobe.

IMPORTANT NOTICE TO CUSTOMERS: The Consumer Protection from Unfair Trading Regulations 2008. Cala Homes (East) Limited operates a policy of continual product development and the specifications outlined in this brochure are indicative only. The computer generated images and photographs do not necessarily represent the actual finishings/elevation or treatments, landscaping, furnishings and fittings at this development. Information contained is accurate at date of publication on 28.04.25. See the main brochure for the full Consumer Protection statement.





# The Darroch

5 bedroom detached home



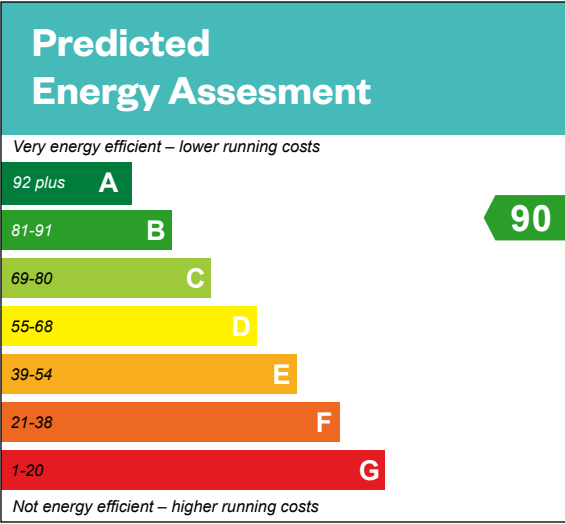


# The Darroch

5 bedroom detached home

Plots 31, 111 & 112 – as shown

Plots 29, 32, 88 & 101 – handed







# The Dewar

5 bedroom detached home



Computer generated image - The Dewar

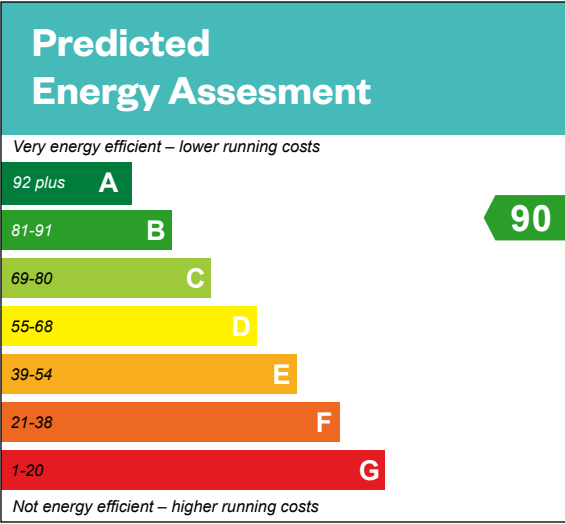


# The Dewar

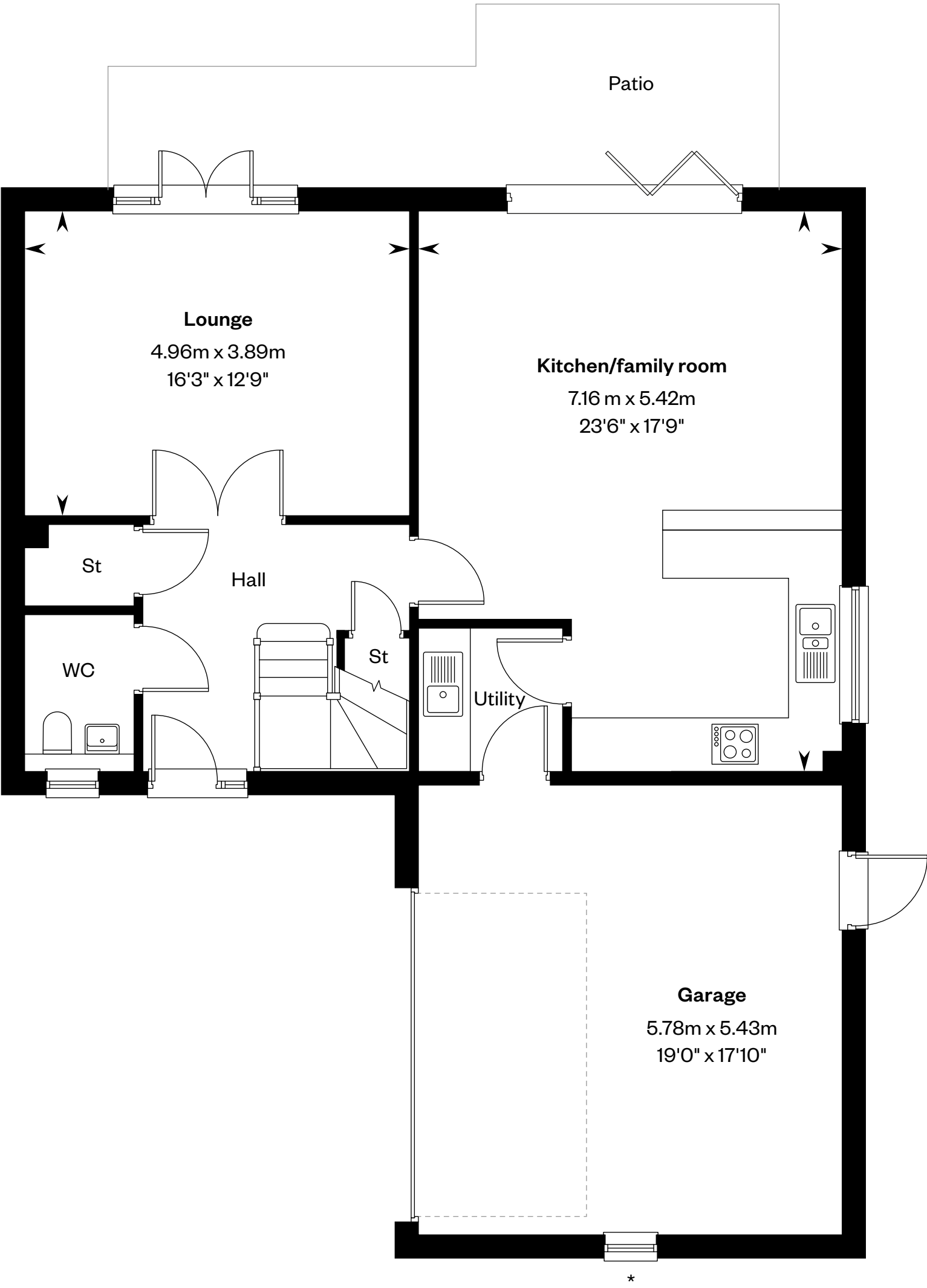
5 bedroom detached home

Plots 28 – as shown

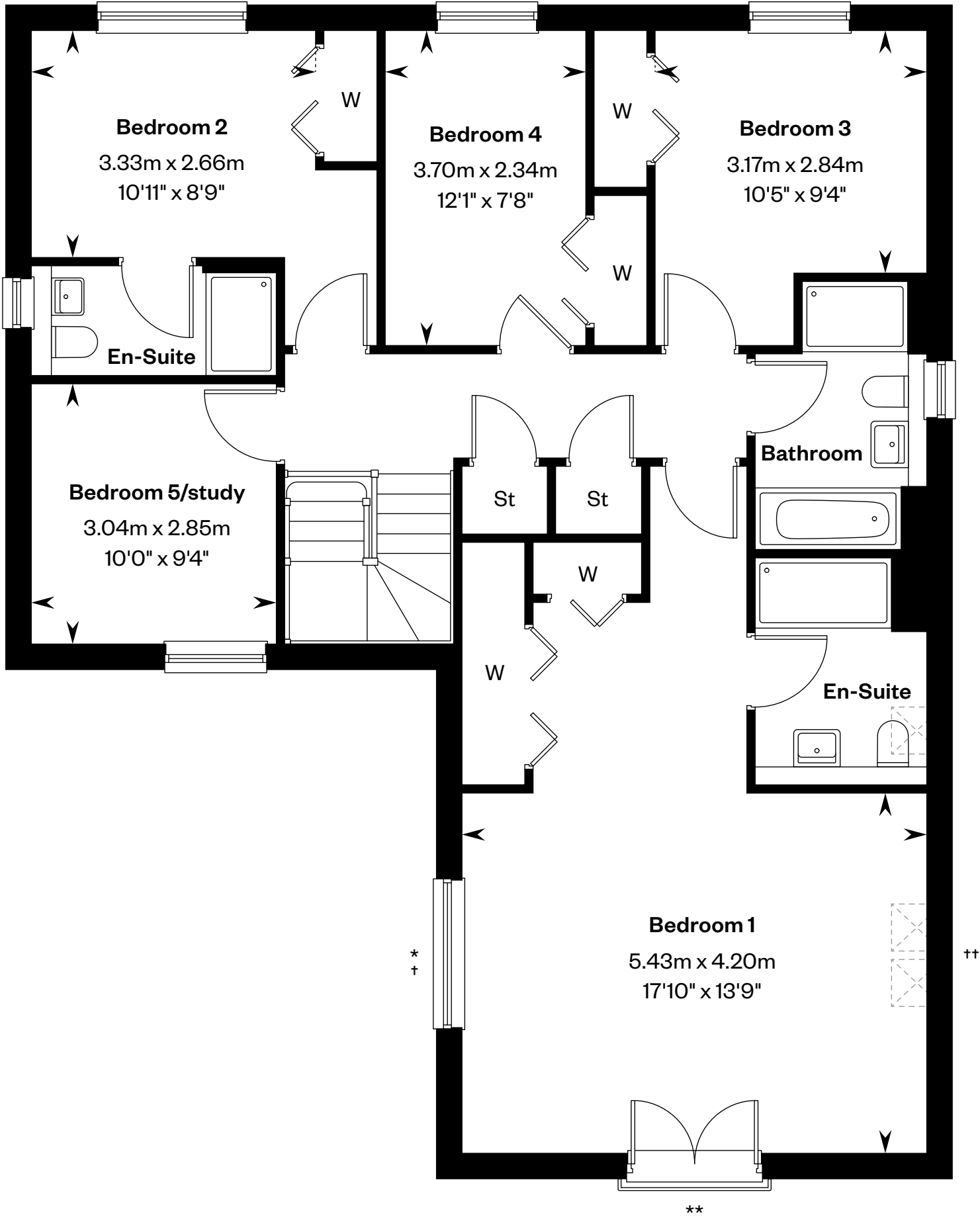
Plots 42 – handed



This is a Predicted Energy Assessment for properties that are incomplete. Once the property is completed, this rating will be updated and an official Energy Performance certificate will be created for the property.



First floor



Ground floor

\*Window to plot 28 only. \*\*Juliet balcony to plot 28 only. \*Juliet balcony to plot 42 only. \*\*Roof lights to plot 42 only. Please ask your Sales Consultant for further details. St: Store cupboard. W: Wardrobe. ☒: Roof light/velux window.

IMPORTANT NOTICE TO CUSTOMERS: The Consumer Protection from Unfair Trading Regulations 2008. Cala Homes (East) Limited operates a policy of continual product development and the specifications outlined in this brochure are indicative only. The computer generated images and photographs do not necessarily represent the actual finishings/elevation or treatments, landscaping, furnishings and fittings at this development. Information contained is accurate at date of publication on 28.04.25. See the main brochure for the full Consumer Protection statement.





# The Garvie

5 bedroom detached home



Computer generated image - The Garvie

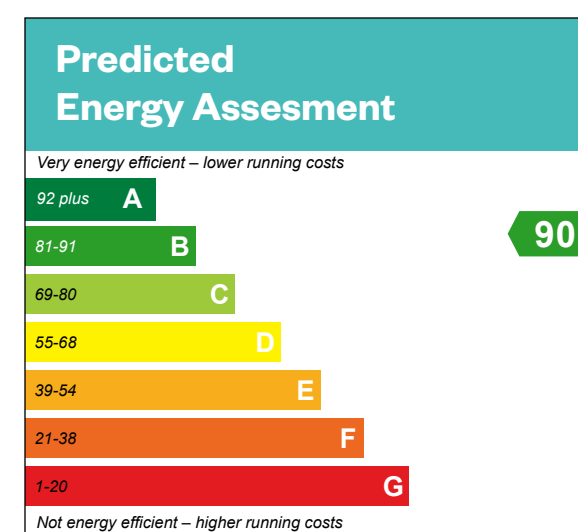


# The Garvie

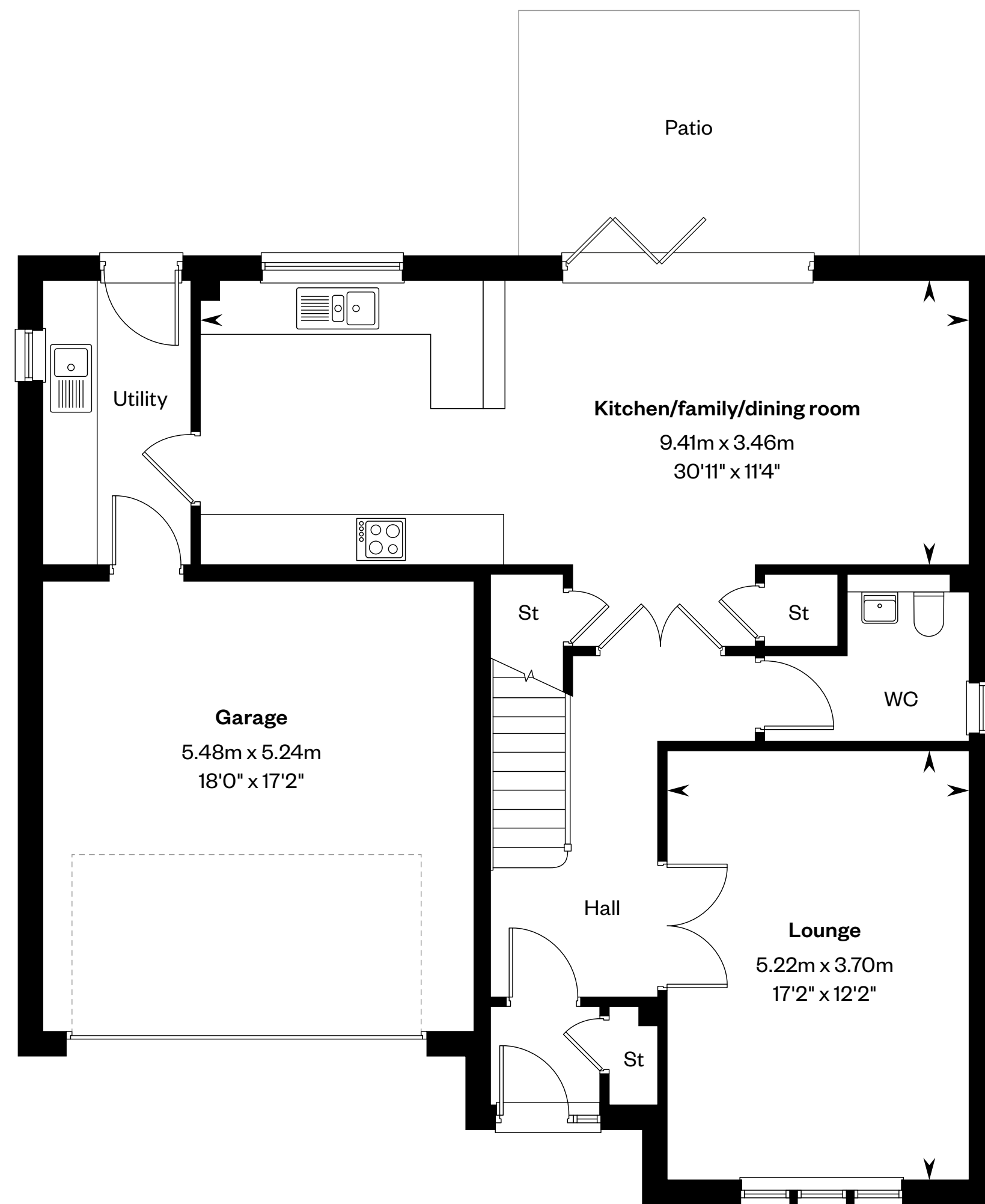
## 5 bedroom detached home

Plots 46, 83 &amp; 110 – as shown

Plots 89, 96, 100 &amp; 109 – handed



This is a Predicted Energy Assessment for properties that are incomplete. Once the property is completed, this rating will be updated and an official Energy Performance certificate will be created for the property.



## First floor



### Ground floor

Please ask your Sales Consultant for further details. St: Store cupboard. W: Wardrobe.

**IMPORTANT NOTICE TO CUSTOMERS:** The Consumer Protection from Unfair Trading Regulations 2008. Cala Homes (East) Limited operates a policy of continual product development and the specifications outlined in this brochure are indicative only. The computer generated images and photographs do not necessarily represent the actual finishings/elevation or treatments, landscaping, furnishings and fittings at this development. Information contained is accurate at date of publication on 28.04.25. See the main brochure for the full Consumer Protection statement.