



# The Foxglove (Bespoke)

3 bedroom end and mid terrace home with upstairs study



Computer generated image - The Foxglove (Bespoke)

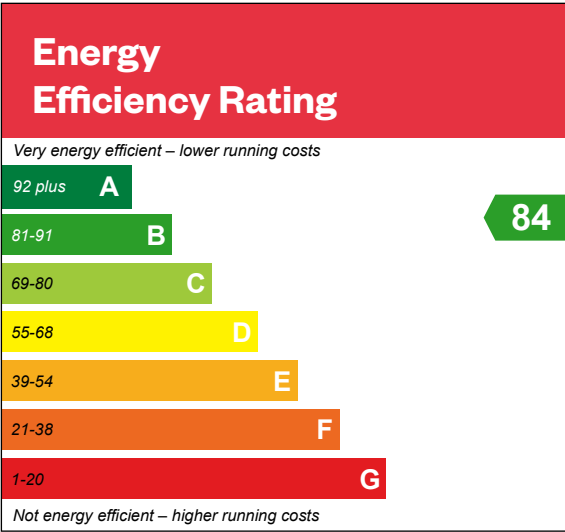


# The Foxglove (Bespoke)

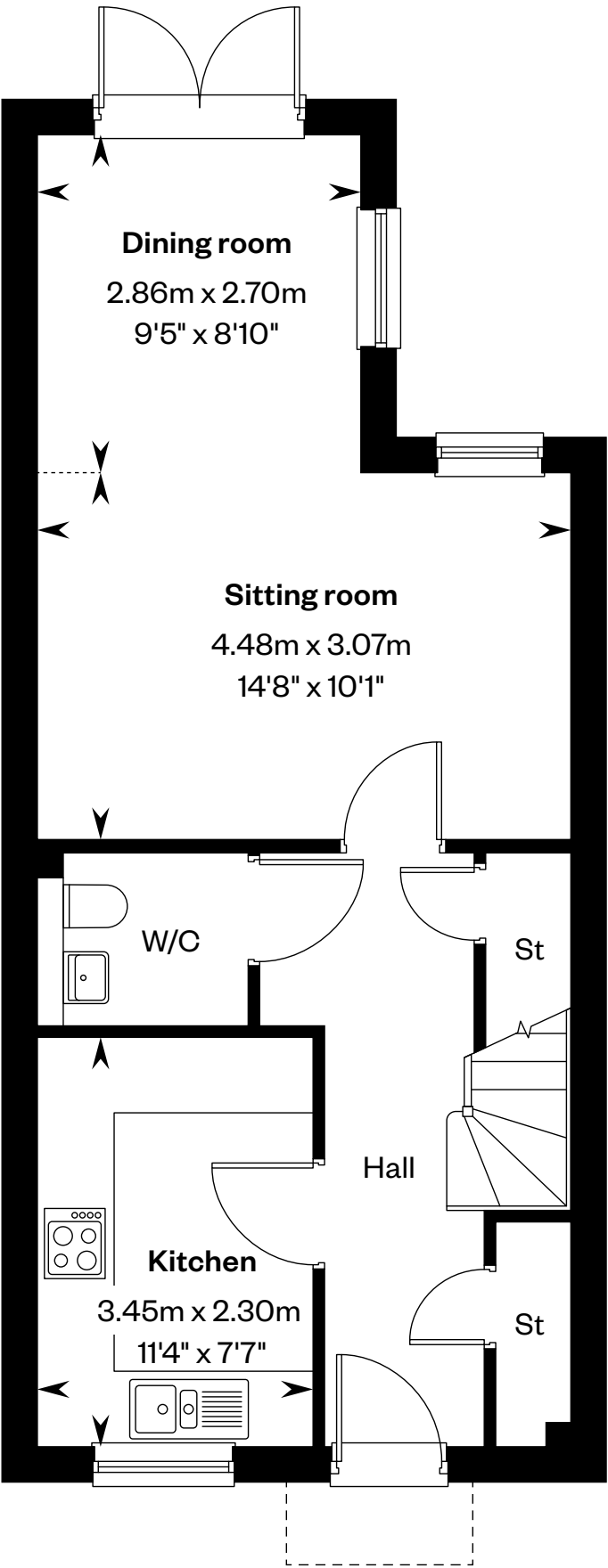
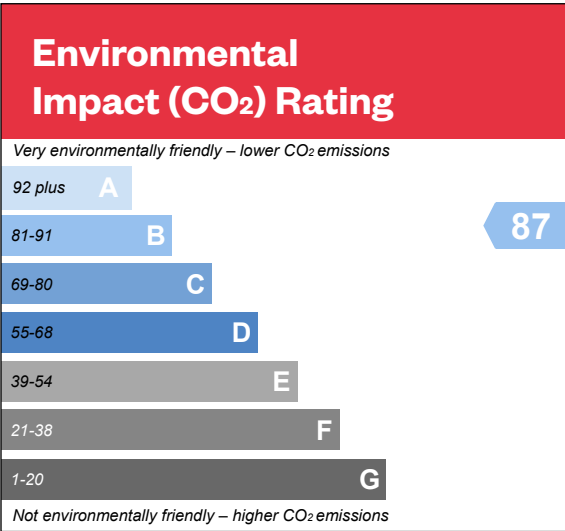
3 bedroom end and mid terrace home  
with upstairs study

Plots 32, 35, 39 & 41 – as shown

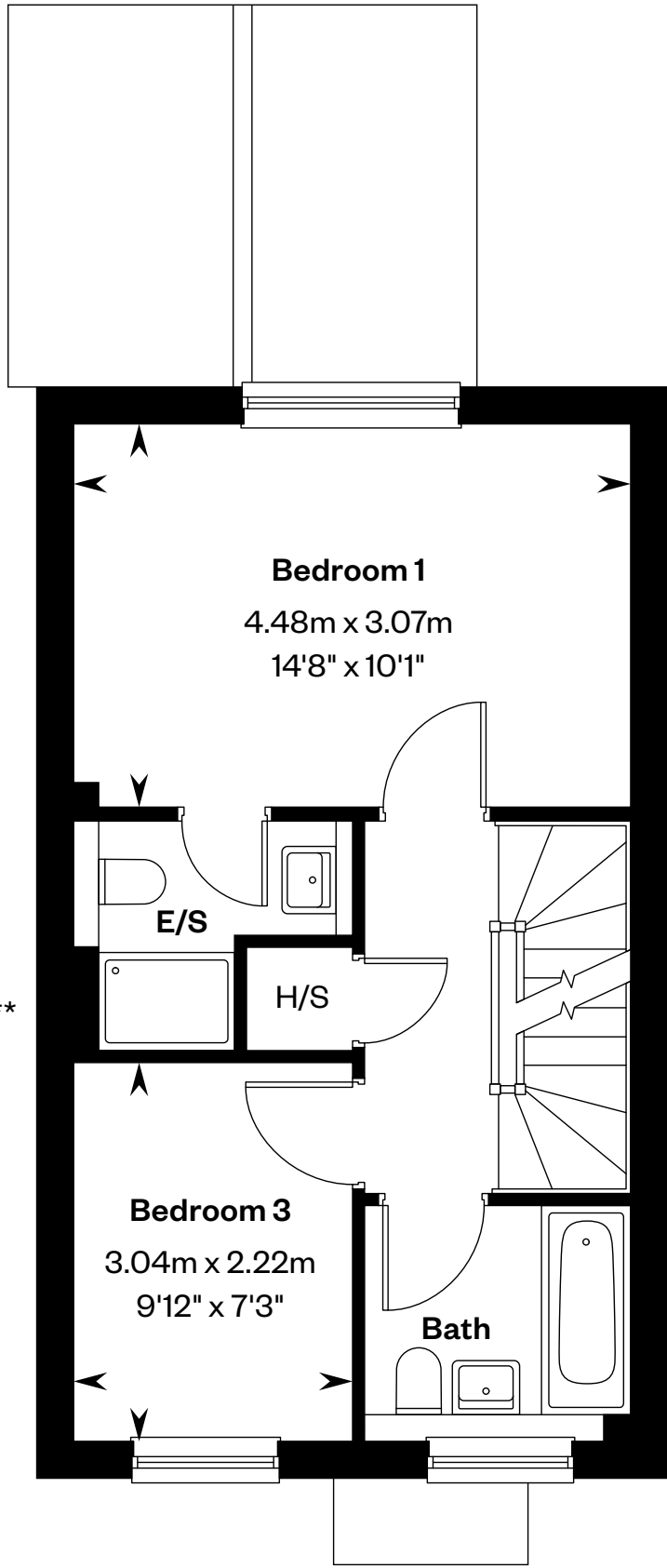
Plots 30, 31, 33, 34, 38 & 40 – handed



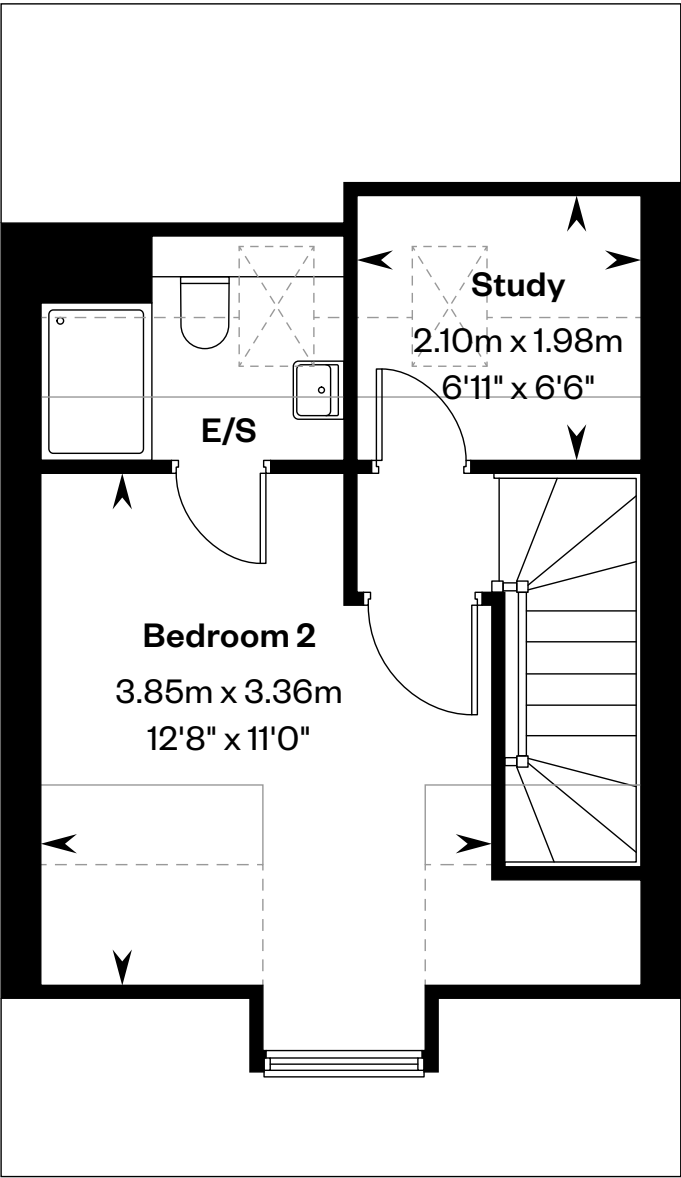
This is a Predicted Energy Assessment for properties that are incomplete. Once the property is completed, this rating will be updated and an official Energy Performance Certificate will be created for the property.



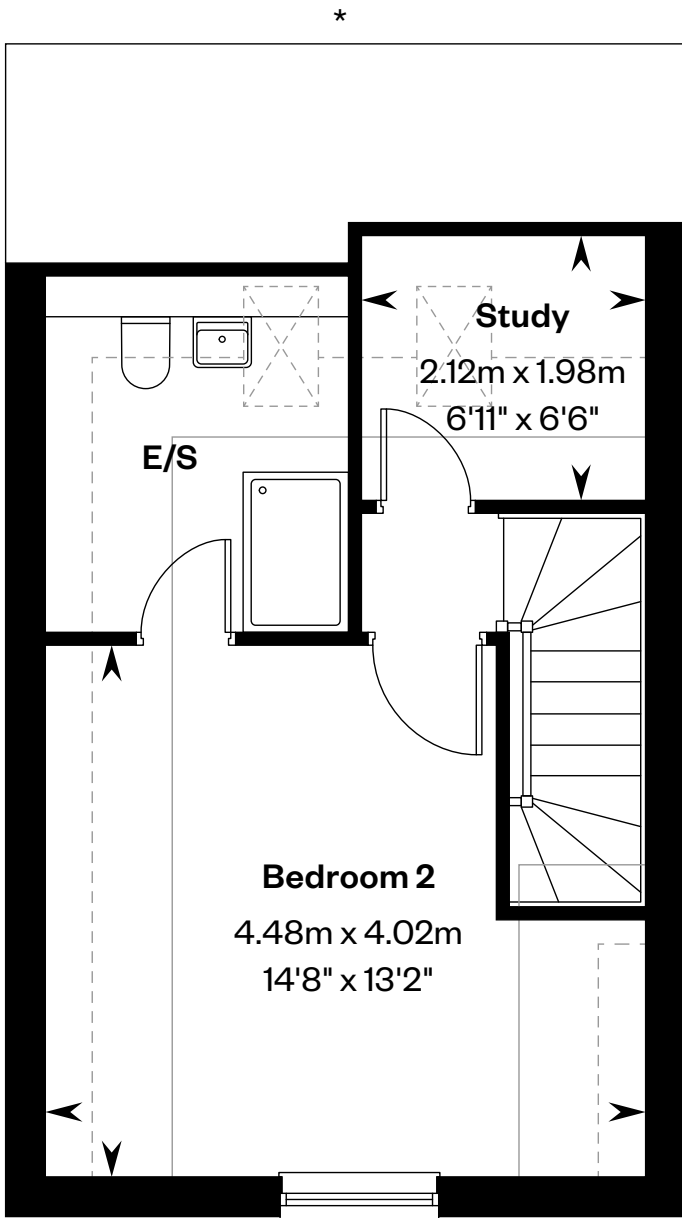
Ground floor



First floor



Second floor



Second floor\*

\*2nd floor layout to plot 32 only. \*\*Window to plot 39 & 40 only. Please ask your Sales Consultant for further details.

E/S: En-Suite. H/S: Heating source cupboard. St: Store cupboard. : Roof light/window. - - - - : Dotted lines denote reduced head height. — : Solid lines denote full head height.

IMPORTANT NOTICE TO CUSTOMERS: The Consumer Protection from Unfair Trading Regulations 2008. Cala Homes (North Home Counties) Limited operates a policy of continual product development and the specifications outlined in this brochure are indicative only. The computer generated images and photographs do not necessarily represent the actual finishings/ elevation or treatments, landscaping, furnishings and fittings at this development. Information contained is accurate at date of publication on 12.12.25. See the main brochure for the full Consumer Protection statement.