

The Arlow

2 bedroom semi detached bungalow



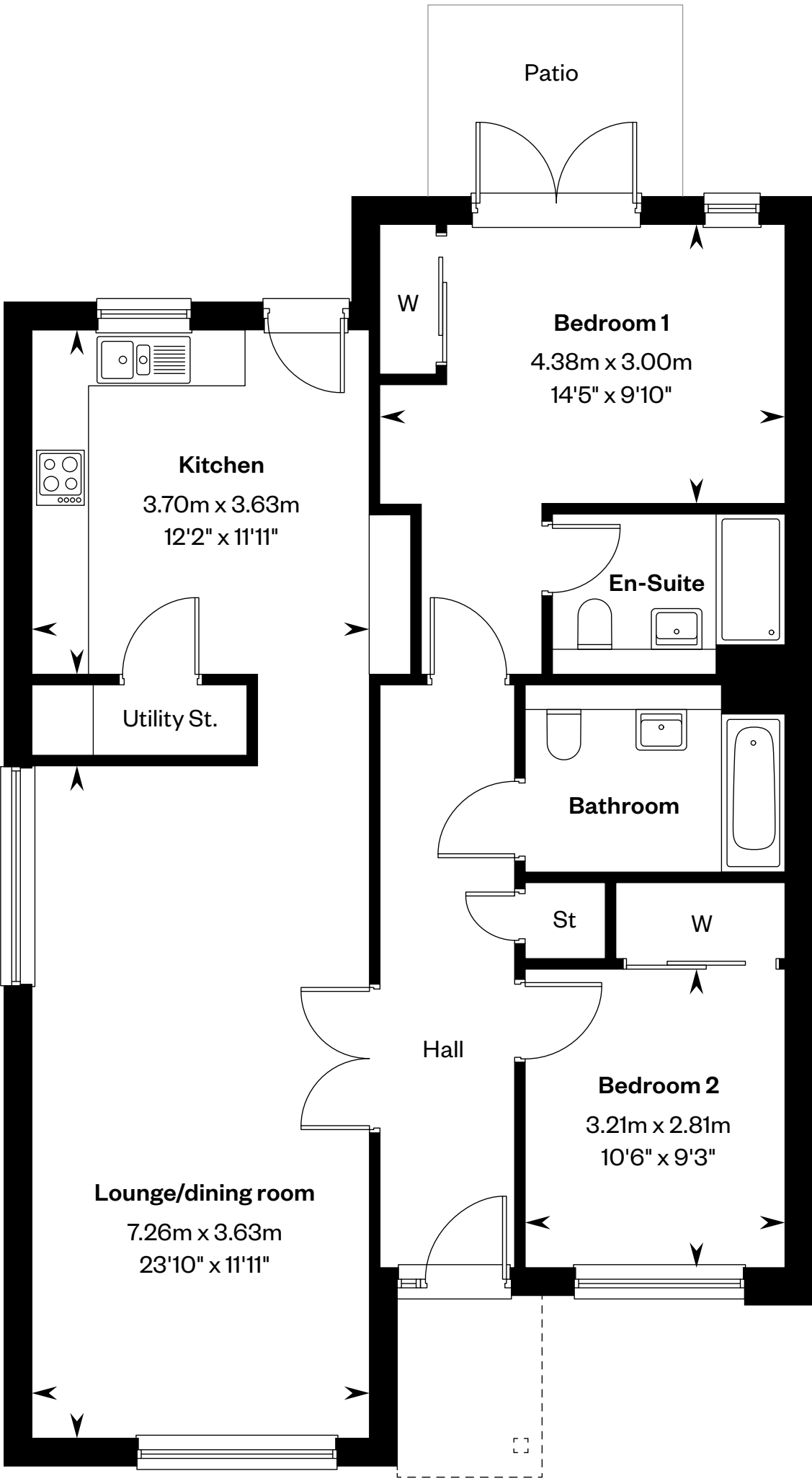
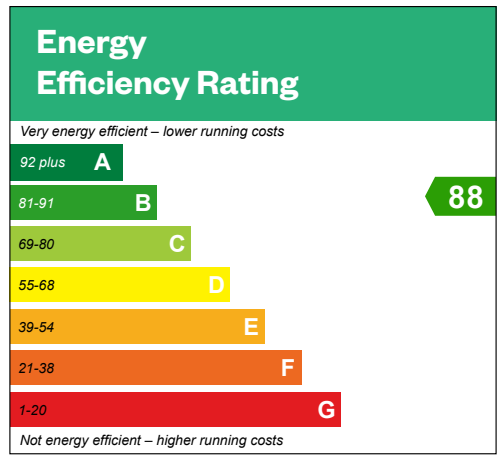
Computer Generated Image - A typical Arlow

The Arlow

2 bedroom semi detached bungalow

Plots 1, 27, 48, 70, 72, 83 & 89 – as shown

Plots 2, 26, 47, 71, 73, 82 & 88 – handed



Ground floor

Please ask your Sales Consultant for further details. St: Store cupboard. W: Wardrobe.

IMPORTANT NOTICE TO CUSTOMERS: The Consumer Protection from Unfair Trading Regulations 2008. Cala Homes (West) Limited operates a policy of continual product development and the specifications outlined in this brochure are indicative only. The computer generated images and photographs do not necessarily represent the actual finishings/elevation or treatments, landscaping, furnishings and fittings at this development. Information contained is accurate at date of publication on 07.01.26. See the main brochure for the full Consumer Protection statement.

The Barnes

3 bedroom terraced and semi detached home

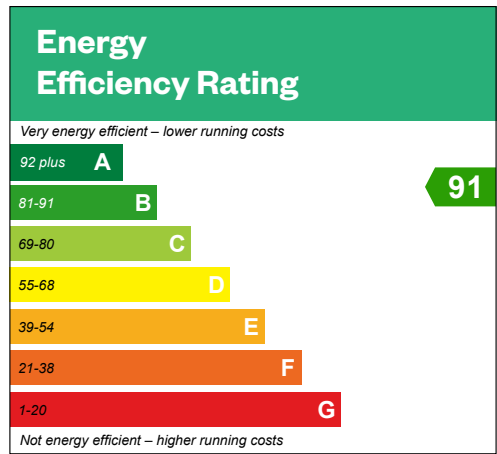


The Barnes

3 bedroom terraced and semi detached home

Plots 7, 8, 11, 12, 76, 77, 80, 81, 85 & 87 – as shown

Plots 9, 10, 13, 14, 74, 75, 78, 79, 84 & 86 – handed



The Cleland

4 bedroom detached home



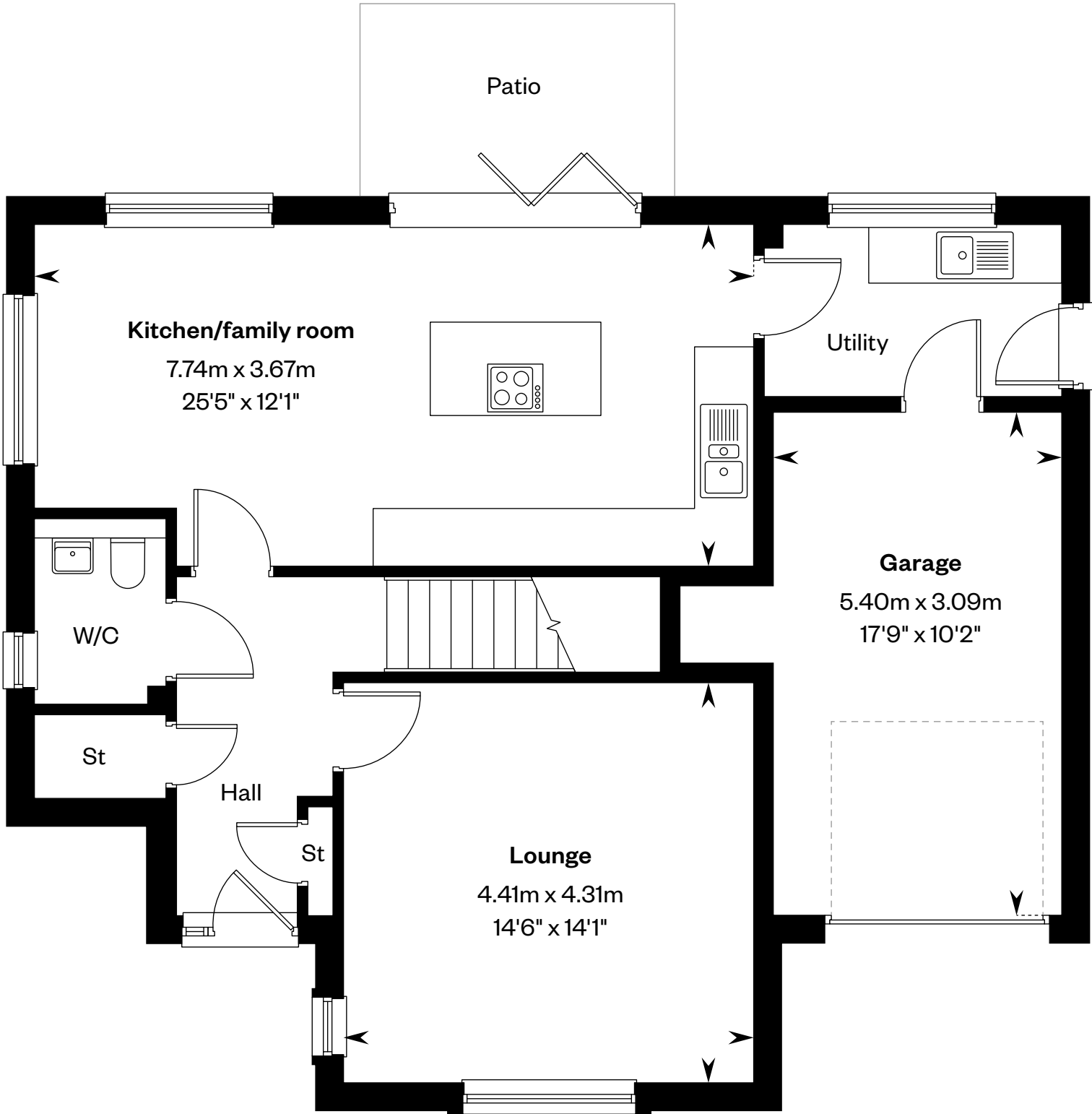
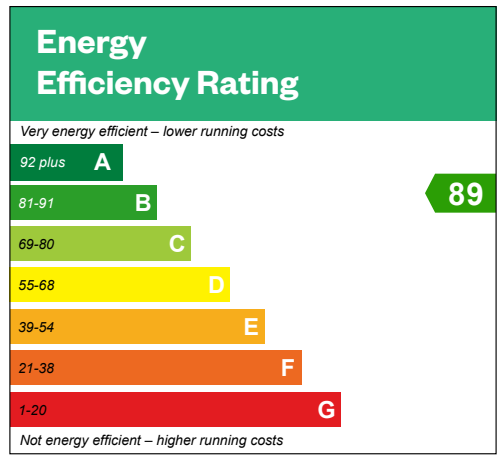
Computer Generated Image - A typical Cleland

The Cleland

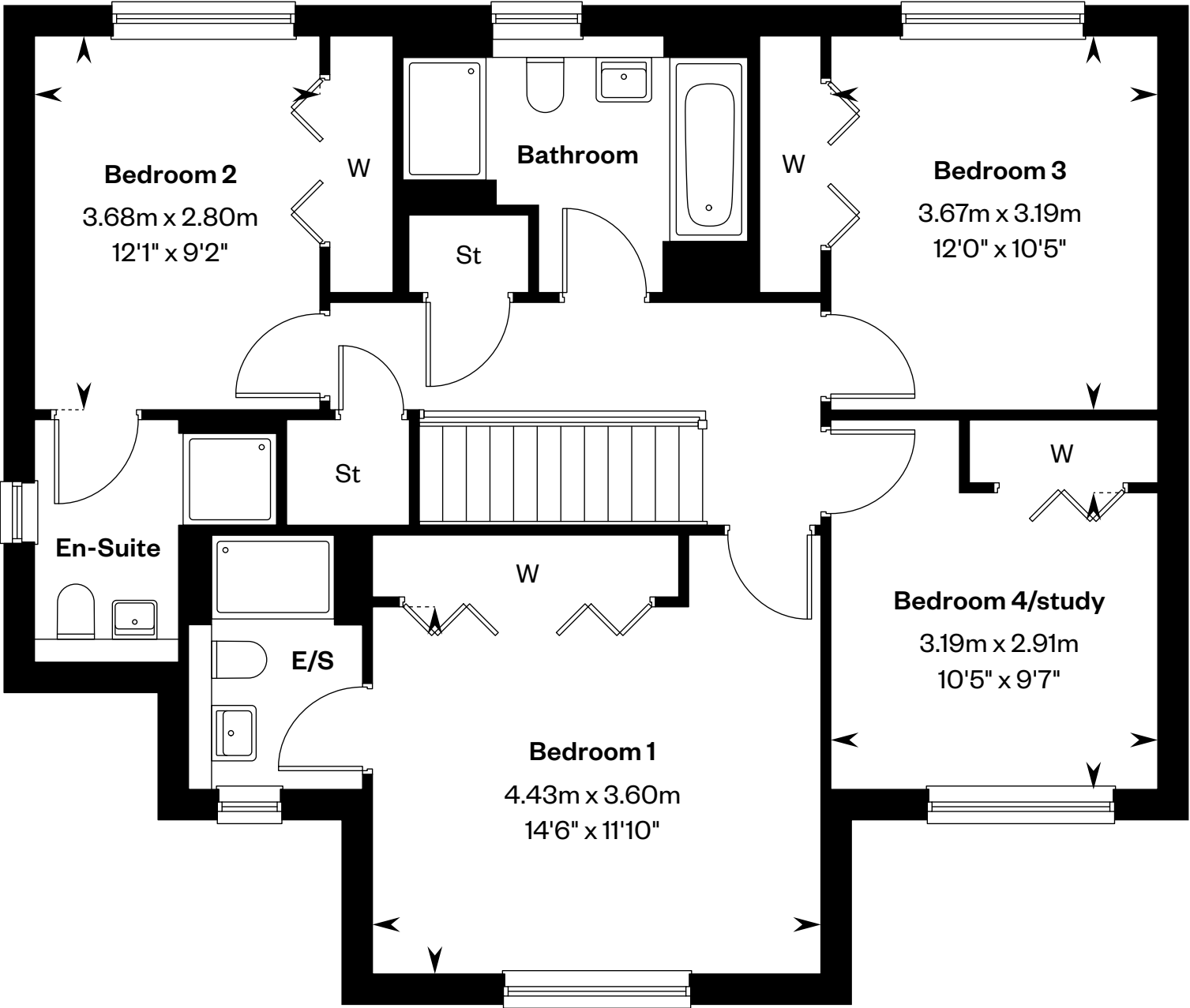
4 bedroom detached home

Plots 18 & 41 – as shown

Plot 65 – handed



Ground floor



First floor

Please ask your Sales Consultant for further details. E/S: En-Suite. St: Store cupboard. W: Wardrobe.

IMPORTANT NOTICE TO CUSTOMERS: The Consumer Protection from Unfair Trading Regulations 2008. Cala Homes (West) Limited operates a policy of continual product development and the specifications outlined in this brochure are indicative only. The computer generated images and photographs do not necessarily represent the actual finishings/elevation or treatments, landscaping, furnishings and fittings at this development. Information contained is accurate at date of publication on 07.01.26. See the main brochure for the full Consumer Protection statement.

The Darroch

5 bedroom detached home

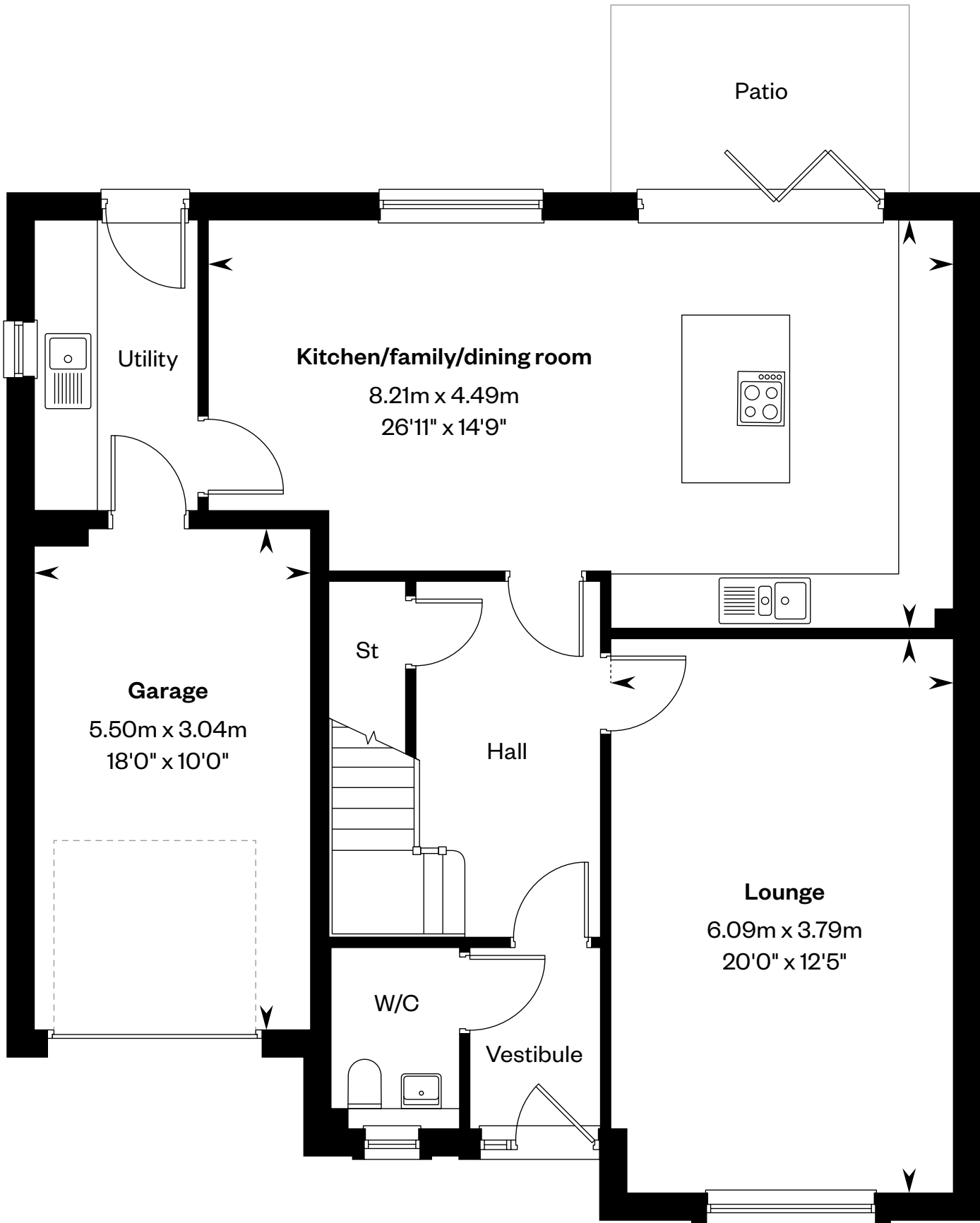
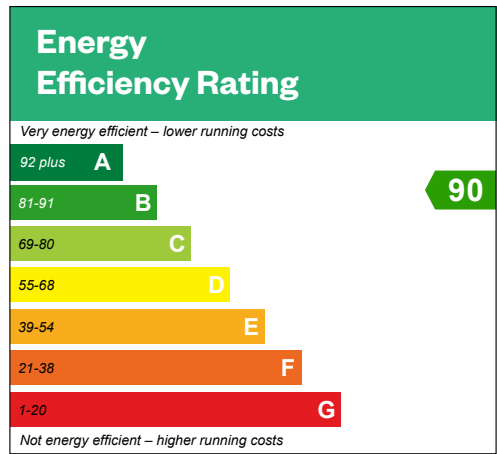


The Darroch

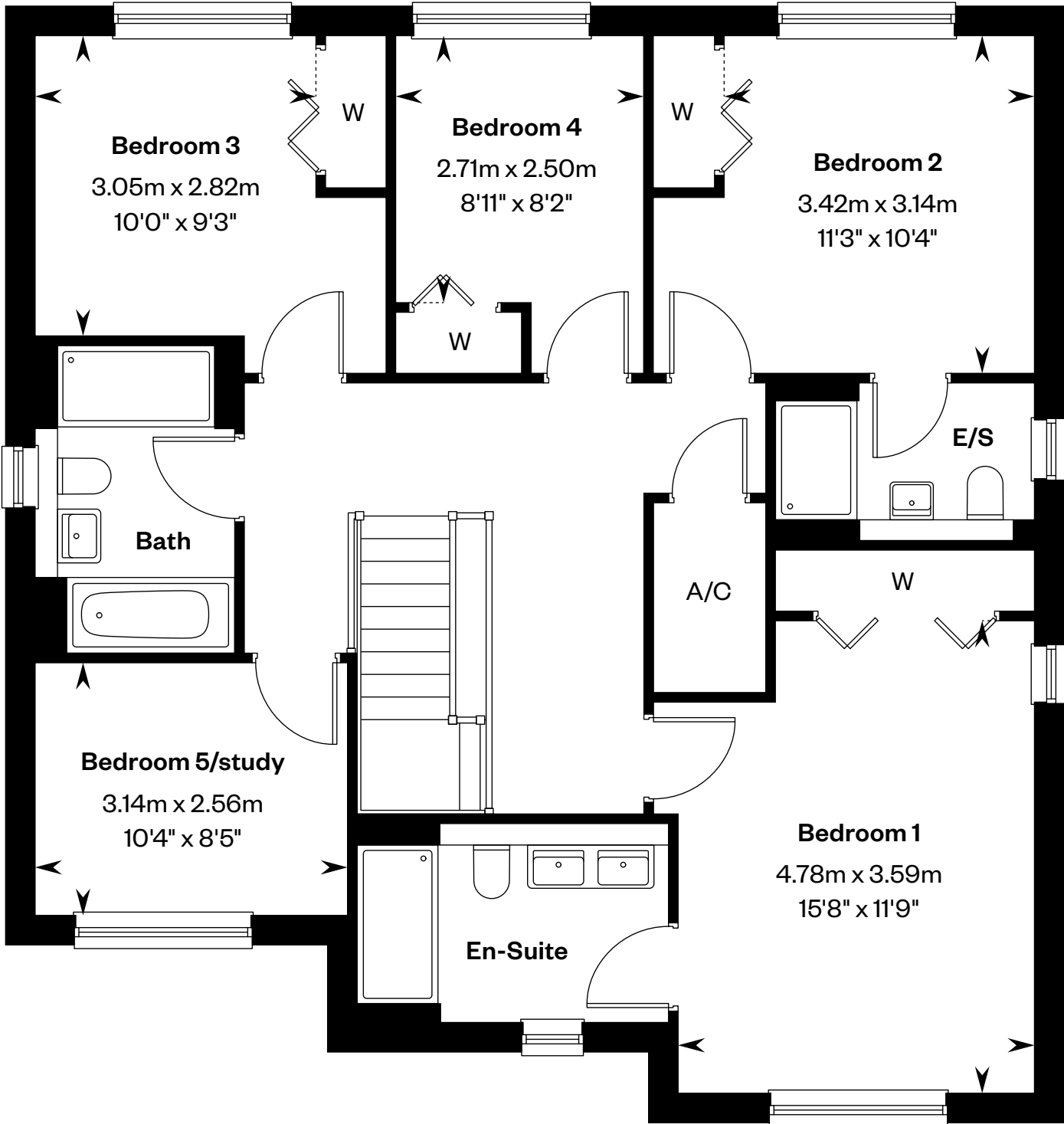
5 bedroom detached home

Plots 58 & 64 – as shown

Plots 6 & 17 – handed



Ground floor



First floor

Please ask your Sales Consultant for further details. A/C: Airing cupboard. E/S: En-Suite. St: Store cupboard. W: Wardrobe.

IMPORTANT NOTICE TO CUSTOMERS: The Consumer Protection from Unfair Trading Regulations 2008. Cala Homes (West) Limited operates a policy of continual product development and the specifications outlined in this brochure are indicative only. The computer generated images and photographs do not necessarily represent the actual finishings/elevation or treatments, landscaping, furnishings and fittings at this development. Information contained is accurate at date of publication on 07.01.26. See the main brochure for the full Consumer Protection statement.

The Garvie

5 bedroom detached home



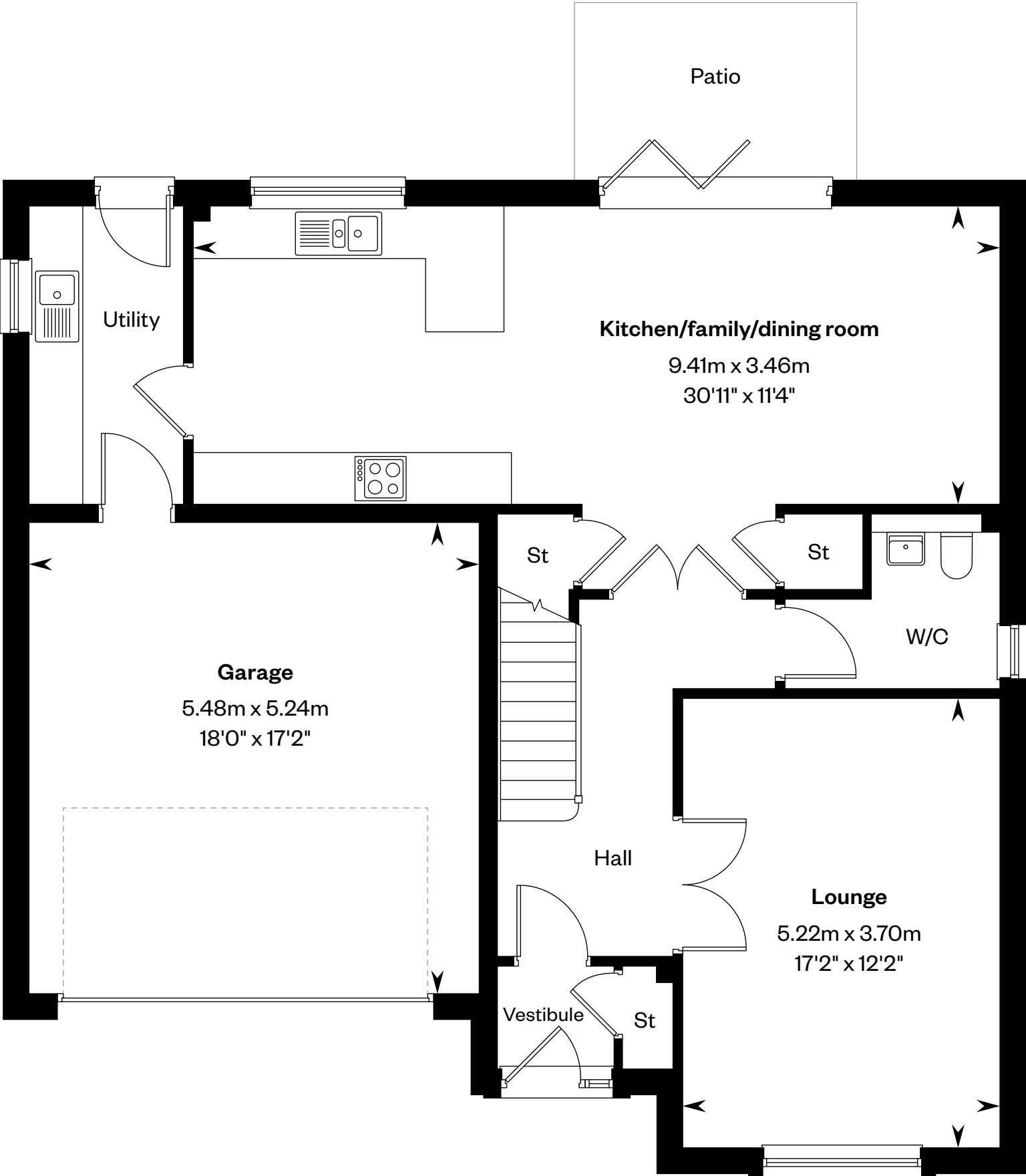
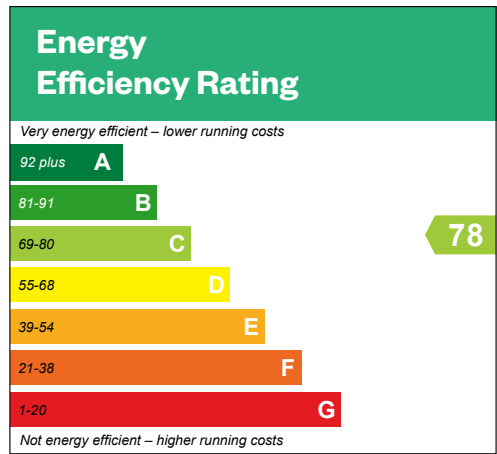
Computer Generated Image – A typical Garvie

The Garvie

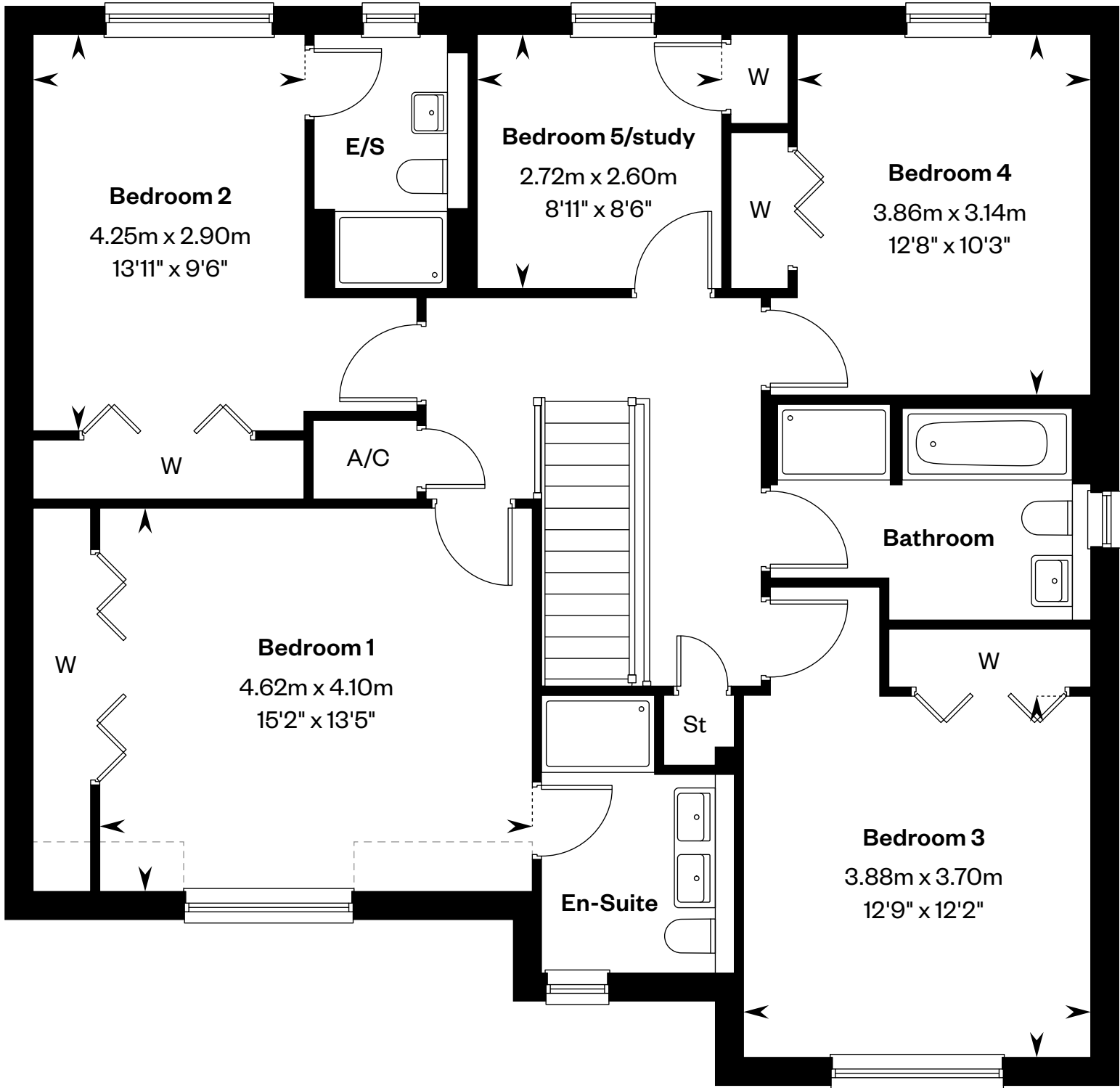
5 bedroom detached home

Plots 15, 19, 22 & 35 – as shown

Plots 5, 40, 60 & 61 – handed



Ground floor



First floor

Please ask your Sales Consultant for further details. A/C: Airing cupboard. E/S: En-Suite. St: Store cupboard. W: Wardrobe. -----: Dotted lines denote reduced head height.

IMPORTANT NOTICE TO CUSTOMERS: The Consumer Protection from Unfair Trading Regulations 2008. Cala Homes (West) Limited operates a policy of continual product development and the specifications outlined in this brochure are indicative only. The computer generated images and photographs do not necessarily represent the actual finishings/elevation or treatments, landscaping, furnishings and fittings at this development. Information contained is accurate at date of publication on 07.01.26. See the main brochure for the full Consumer Protection statement.

The Logan

5 bedroom detached home



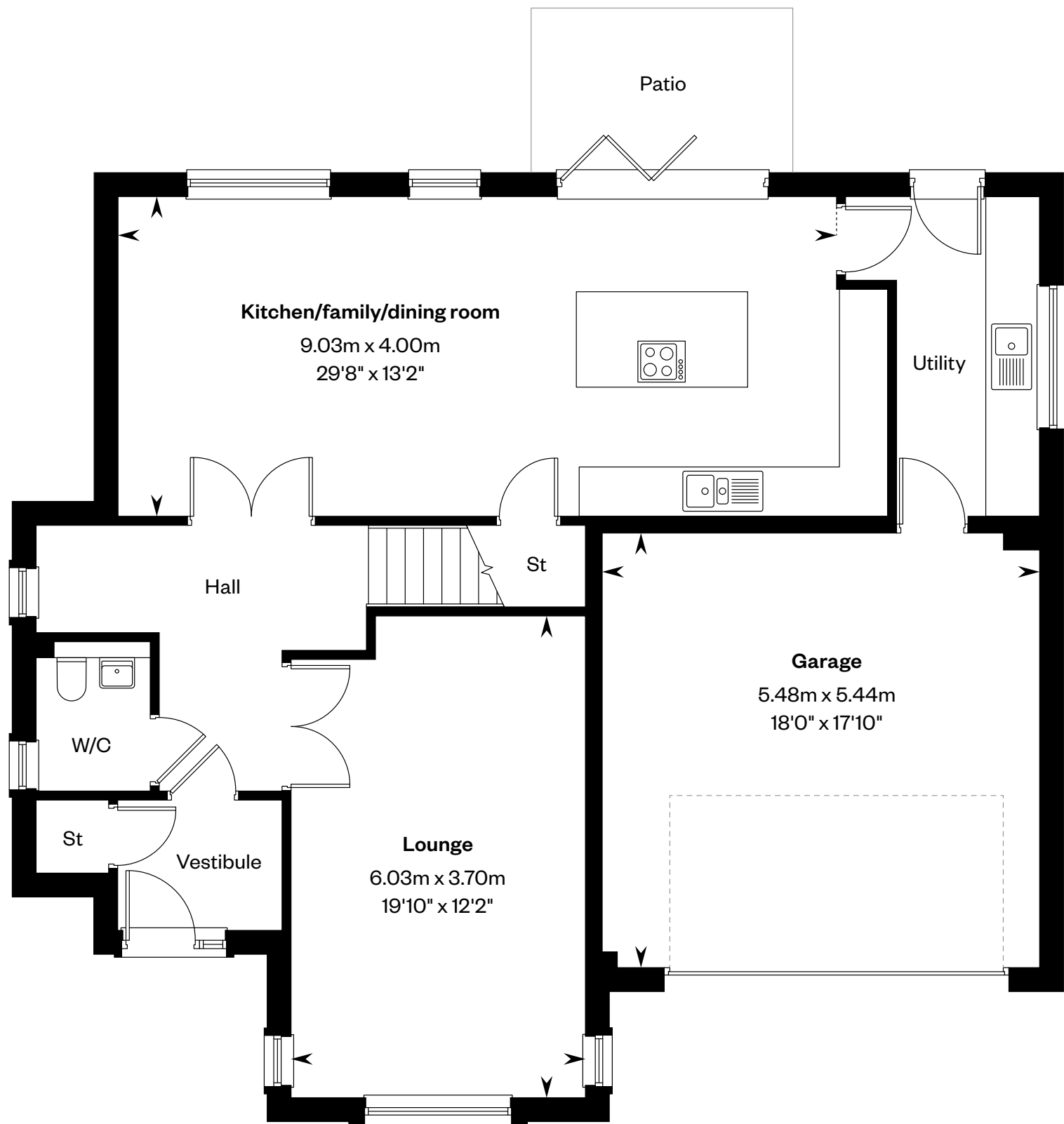
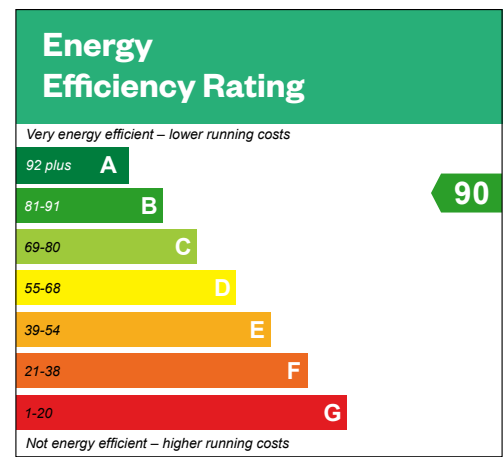
Computer Generated Image - A typical Logan

The Logan

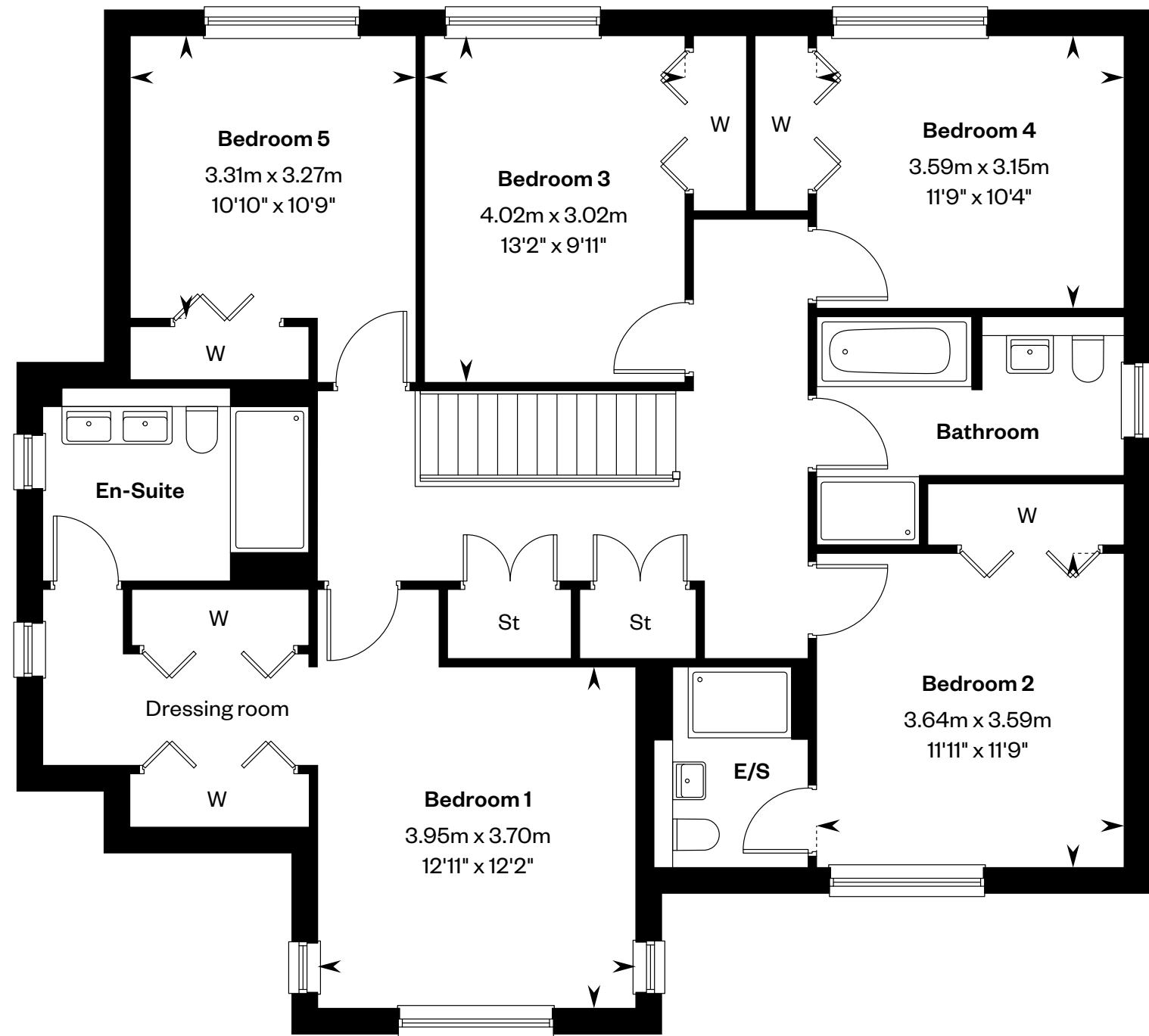
5 bedroom detached home

Plots 20 & 50 – as shown

Plots 24, 34, 56, 57 & 63 – handed



Ground floor



First floor

Please ask your Sales Consultant for further details. E/S: En-Suite. St: Store cupboard. W: Wardrobe.

IMPORTANT NOTICE TO CUSTOMERS: The Consumer Protection from Unfair Trading Regulations 2008. Cala Homes (West) Limited operates a policy of continual product development and the specifications outlined in this brochure are indicative only. The computer generated images and photographs do not necessarily represent the actual finishings/elevation or treatments, landscaping, furnishings and fittings at this development. Information contained is accurate at date of publication on 07.01.26. See the main brochure for the full Consumer Protection statement.

The Lewis

5 bedroom detached home

CALA



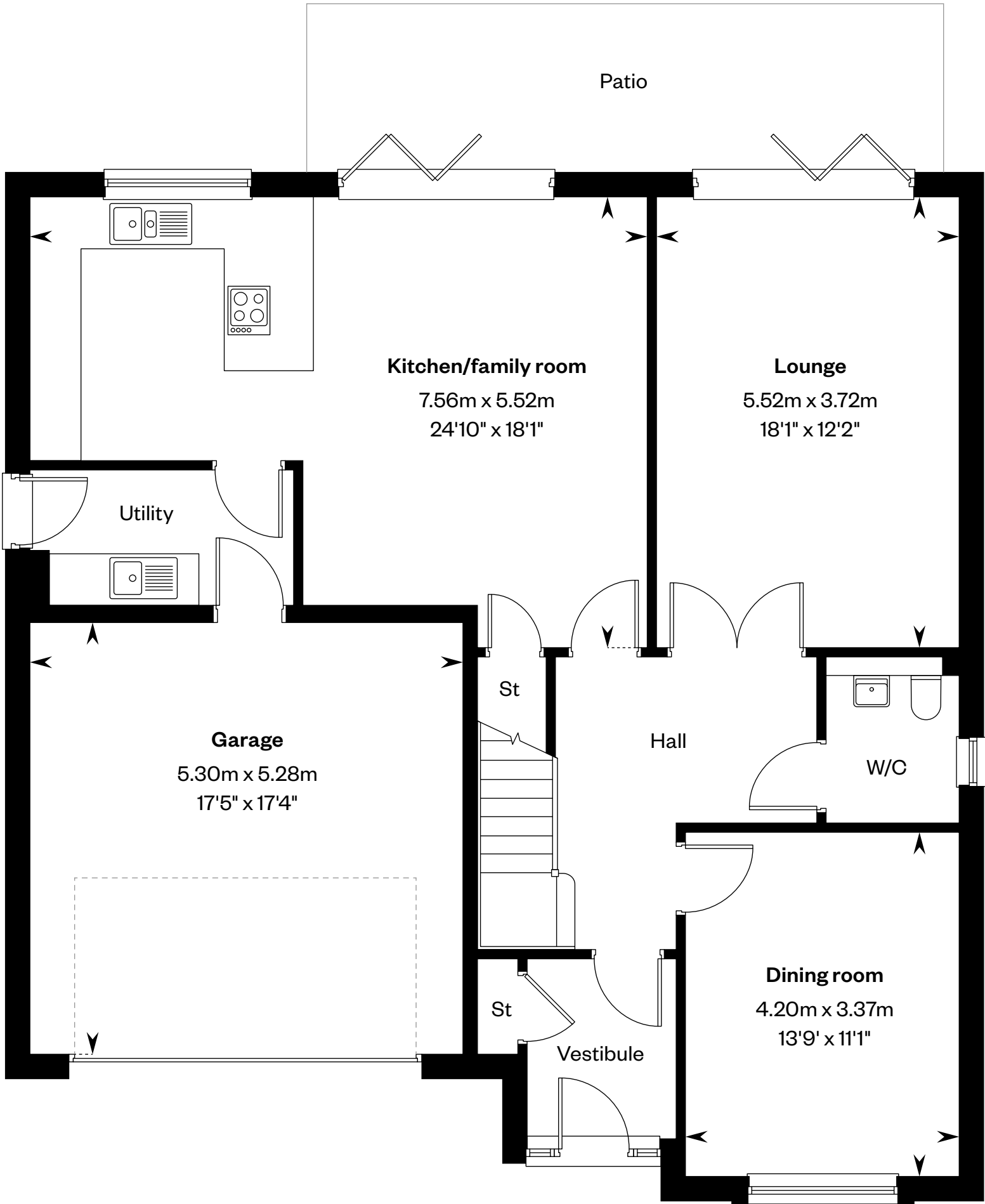
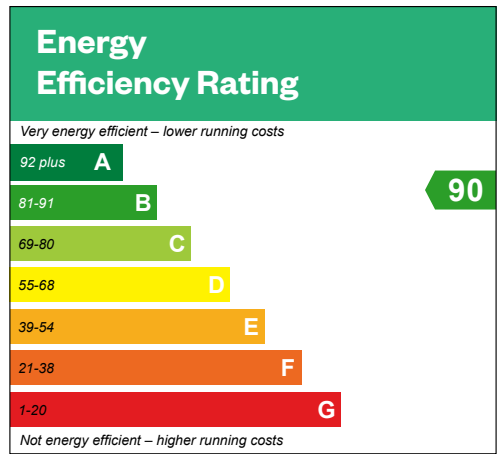
Computer Generated Image - A typical Lewis

The Lewis

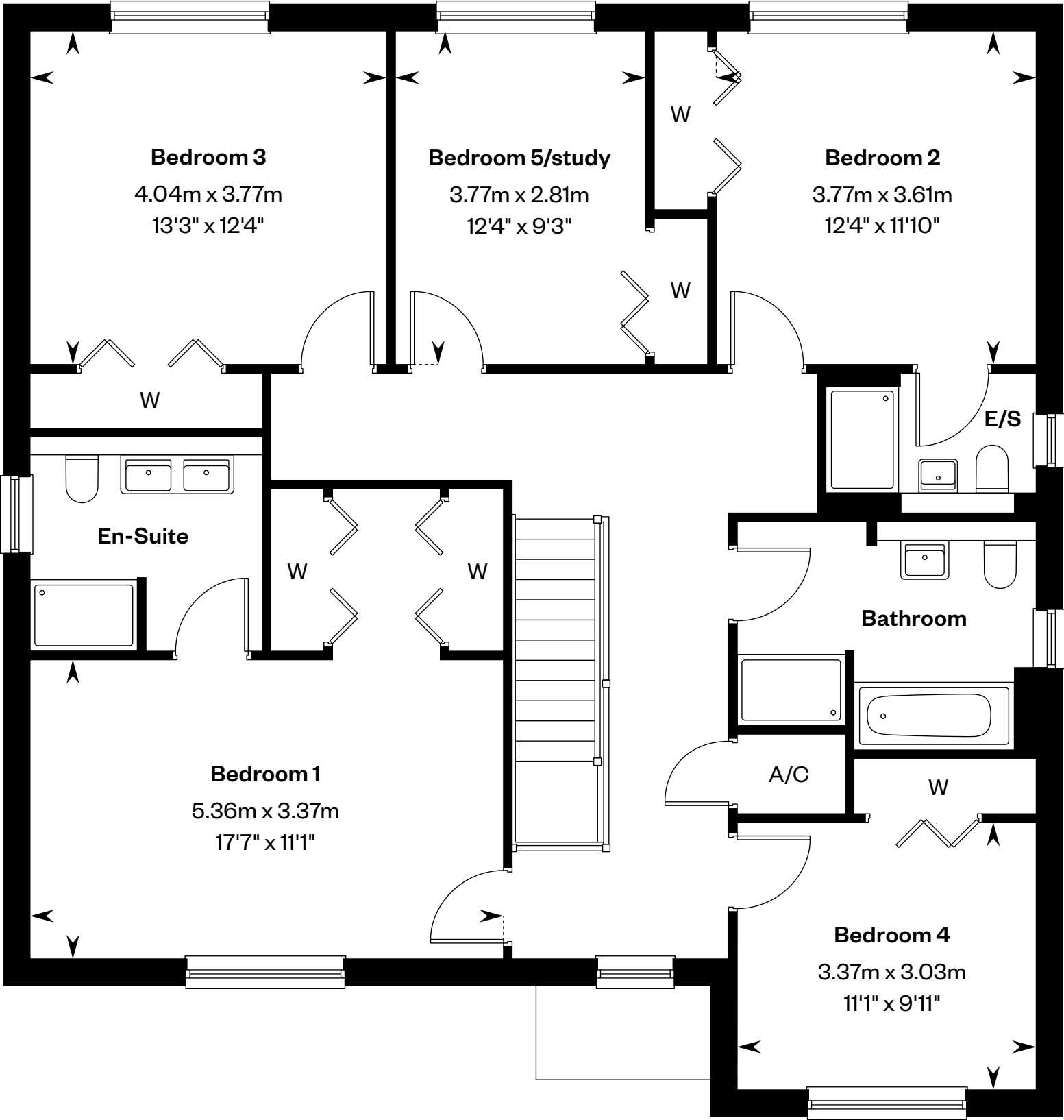
5 bedroom detached home

Plots 44, 59 & 62 – as shown

Plot 16 – handed



Ground floor



First floor

Please ask your Sales Consultant for further details. A/C: Airing cupboard. E/S: En-Suite. St: Store cupboard. W: Wardrobe.

IMPORTANT NOTICE TO CUSTOMERS: The Consumer Protection from Unfair Trading Regulations 2008. Cala Homes (West) Limited operates a policy of continual product development and the specifications outlined in this brochure are indicative only. The computer generated images and photographs do not necessarily represent the actual finishings/elevation or treatments, landscaping, furnishings and fittings at this development. Information contained is accurate at date of publication on 07.01.26. See the main brochure for the full Consumer Protection statement.

The Melville

5 bedroom detached home



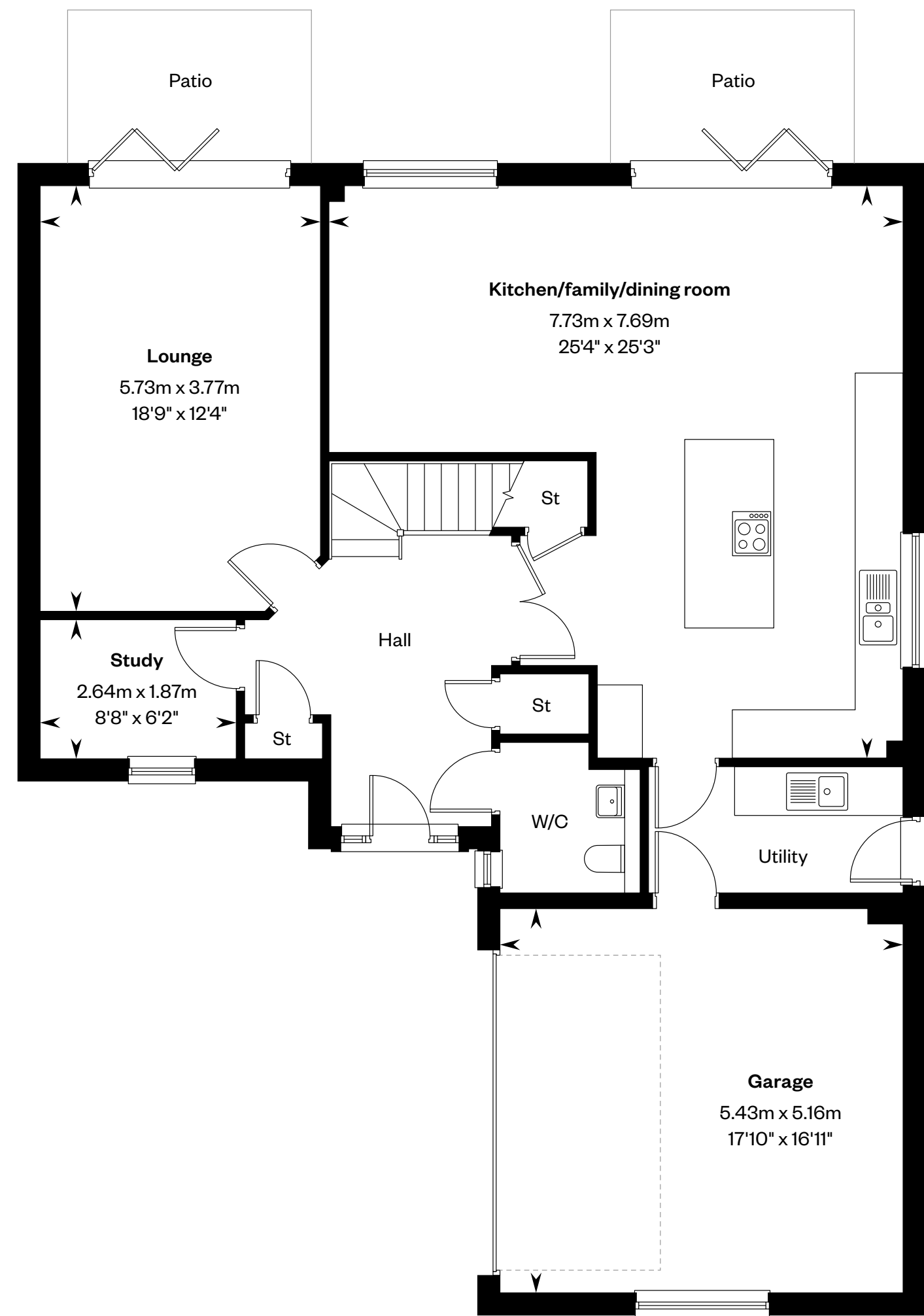
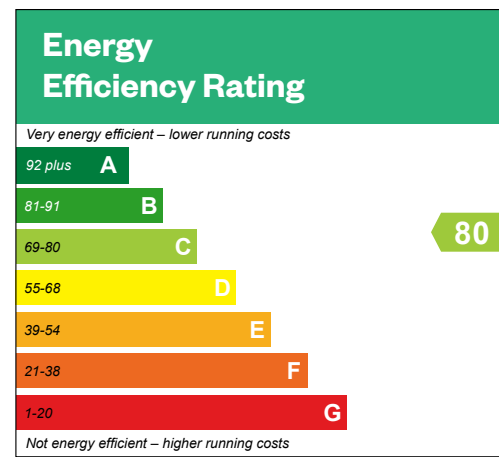
Computer Generated Image - A typical Melville

The Melville

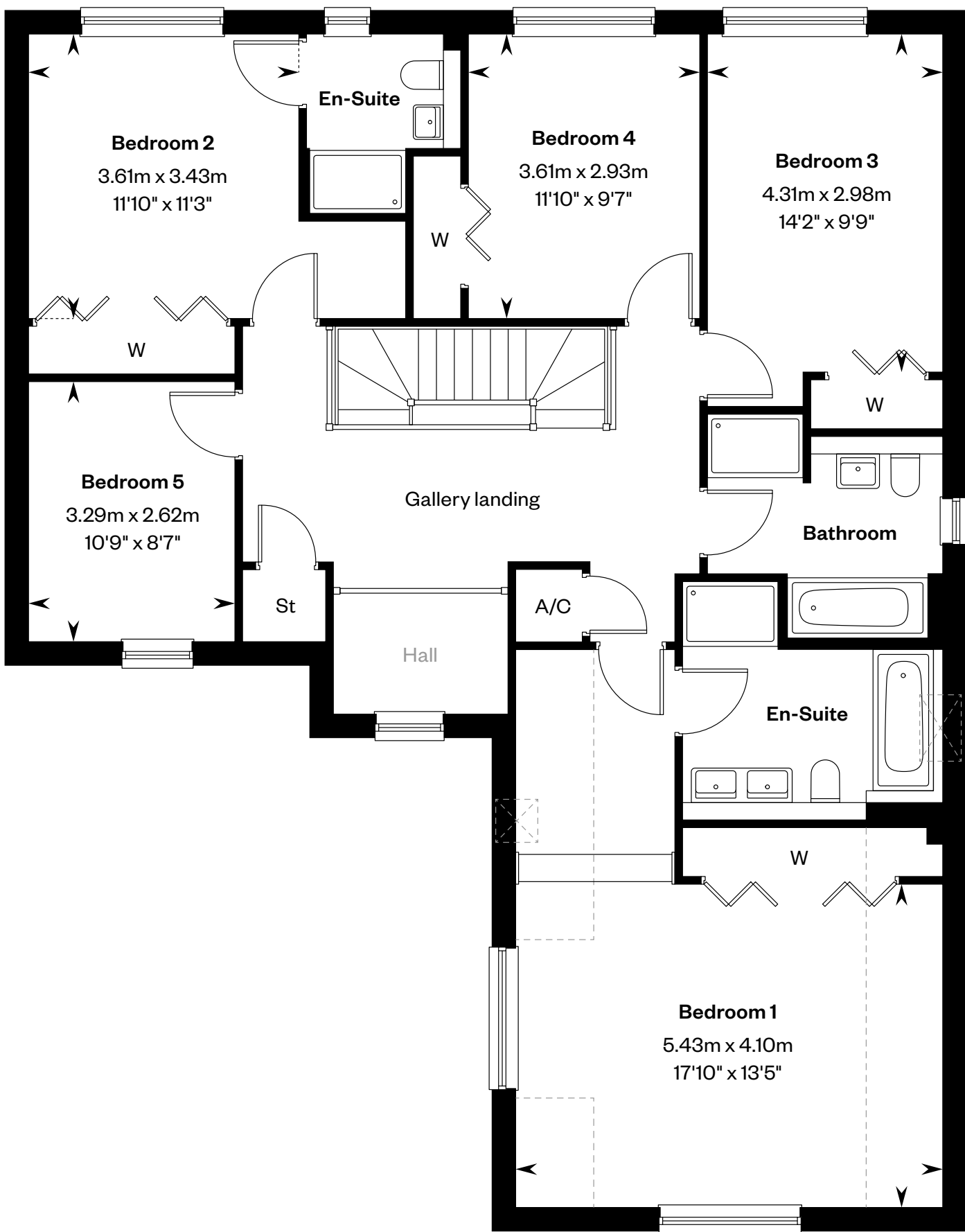
5 bedroom detached home

Plots 3, 51, 67 & 69 – as shown

Plots 21 & 46 – handed



Ground floor



First floor

Plot 28 is FE. *Window to plots 3, 21, 46 & 51 only. Please ask your Sales Consultant for further details. A/C: Airing cupboard. St: Store cupboard. W: Wardrobe. ☒: Roof light/velux window. ----: Dotted lines denote reduced head height.

IMPORTANT NOTICE TO CUSTOMERS: The Consumer Protection from Unfair Trading Regulations 2008. Cala Homes (West) Limited operates a policy of continual product development and the specifications outlined in this brochure are indicative only. The computer generated images and photographs do not necessarily represent the actual finishings/elevation or treatments, landscaping, furnishings and fittings at this development. Information contained is accurate at date of publication on 07.01.26. See the main brochure for the full Consumer Protection statement.

The Macrae ST (attached)

5 bedroom detached home

CALA



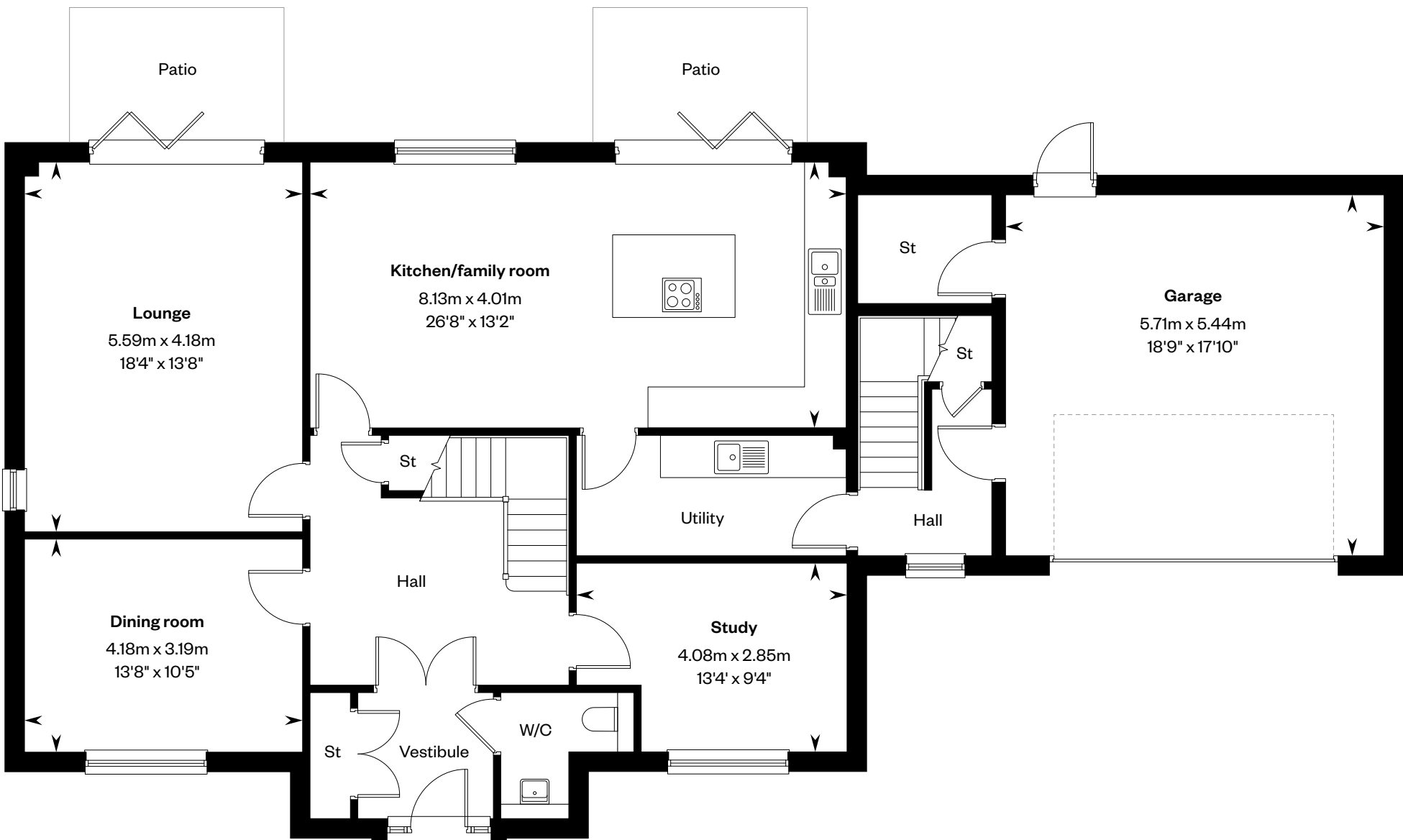
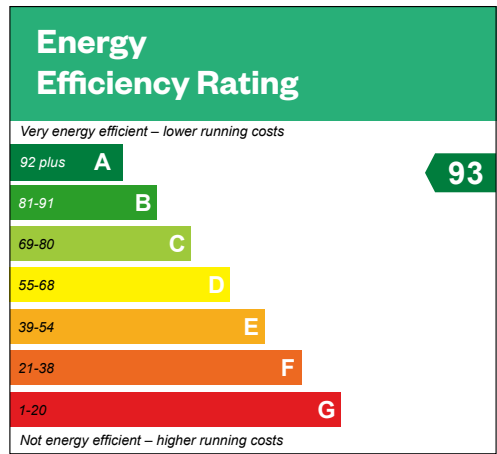
Computer Generated Image - A typical Macrae ST (attached)

The Macrae ST (attached)

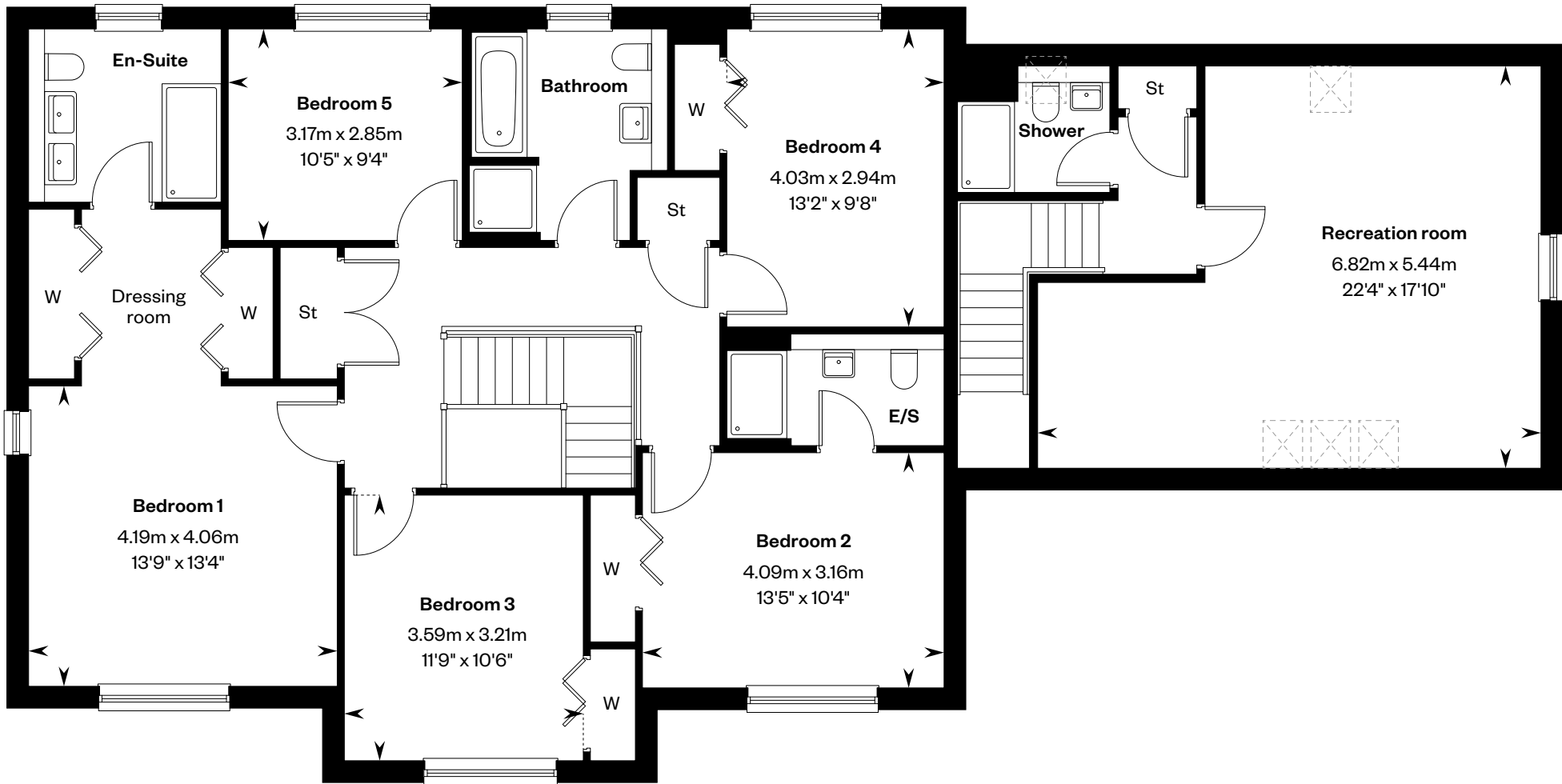
5 bedroom detached home

Plots 32, 45 & 54 – as shown

Plot 43 – handed



Ground floor



First floor

Please ask your Sales Consultant for further details. E/S: En-Suite. St: Store cupboard. W: Wardrobe. ☒: Roof light/velux window.

IMPORTANT NOTICE TO CUSTOMERS: The Consumer Protection from Unfair Trading Regulations 2008. Cala Homes (West) Limited operates a policy of continual product development and the specifications outlined in this brochure are indicative only. The computer generated images and photographs do not necessarily represent the actual finishings/elevation or treatments, landscaping, furnishings and fittings at this development. Information contained is accurate at date of publication on 07.01.26. See the main brochure for the full Consumer Protection statement.

The Macrae ST (detached)

5 bedroom detached home

CALA



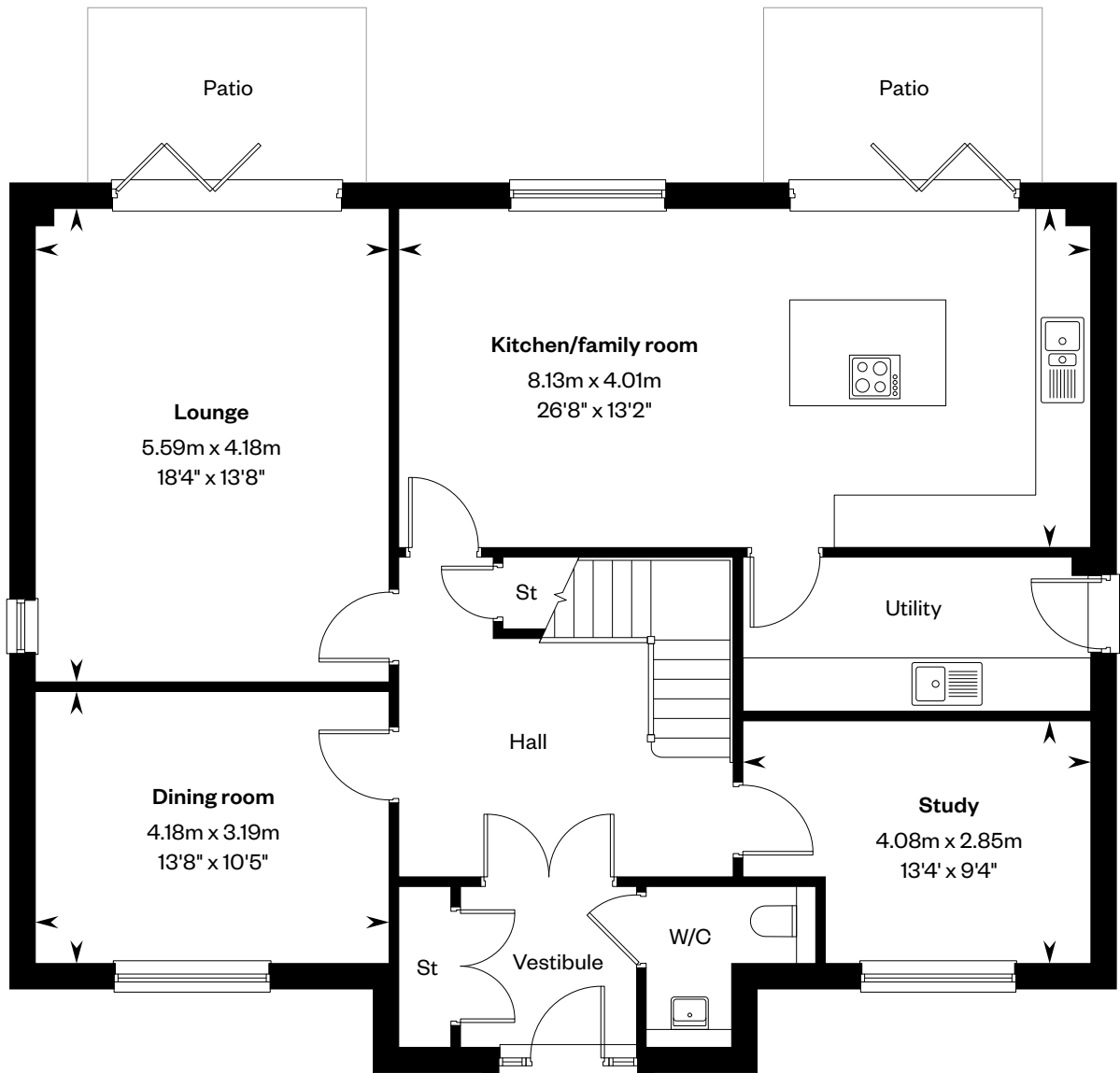
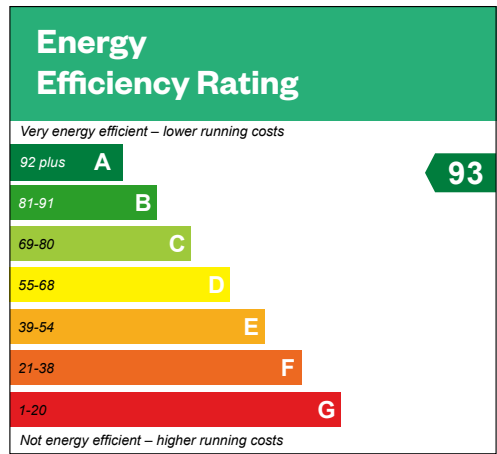
Computer Generated Image – A typical Macrae ST (detached)

The Macrae ST (detached)

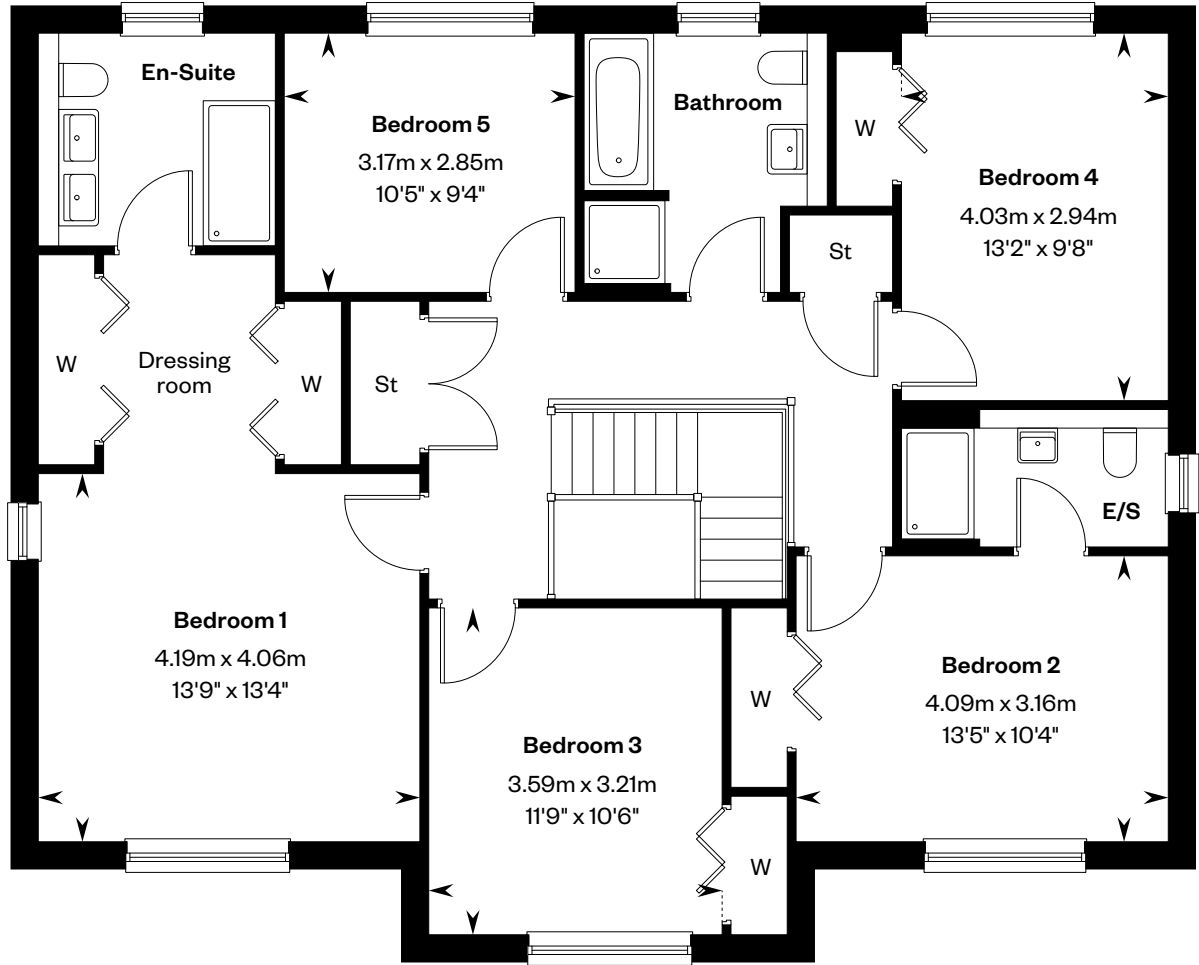
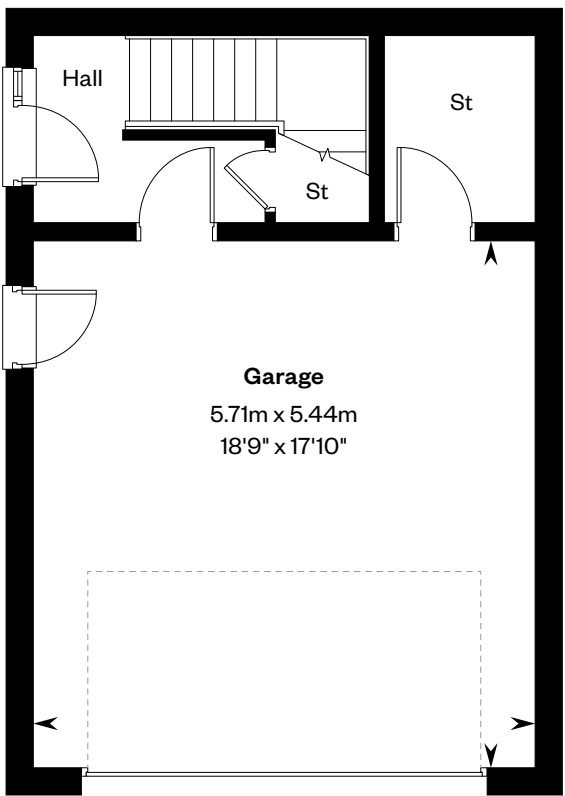
5 bedroom detached home

Plot 36 – as shown

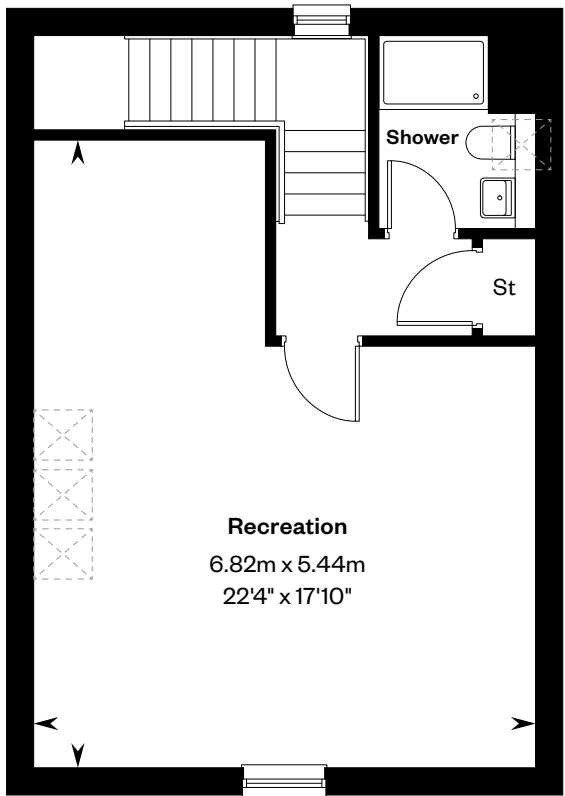
Plot 39 – handed



Ground floor



First floor



Please ask your Sales Consultant for further details. E/S: En-Suite. St: Store cupboard. W: Wardrobe. ☒: Roof light/velux window.

IMPORTANT NOTICE TO CUSTOMERS: The Consumer Protection from Unfair Trading Regulations 2008. Cala Homes (West) Limited operates a policy of continual product development and the specifications outlined in this brochure are indicative only. The computer generated images and photographs do not necessarily represent the actual finishings/elevation or treatments, landscaping, furnishings and fittings at this development. Information contained is accurate at date of publication on 07.01.26. See the main brochure for the full Consumer Protection statement.

The Moncrief

5 bedroom detached home



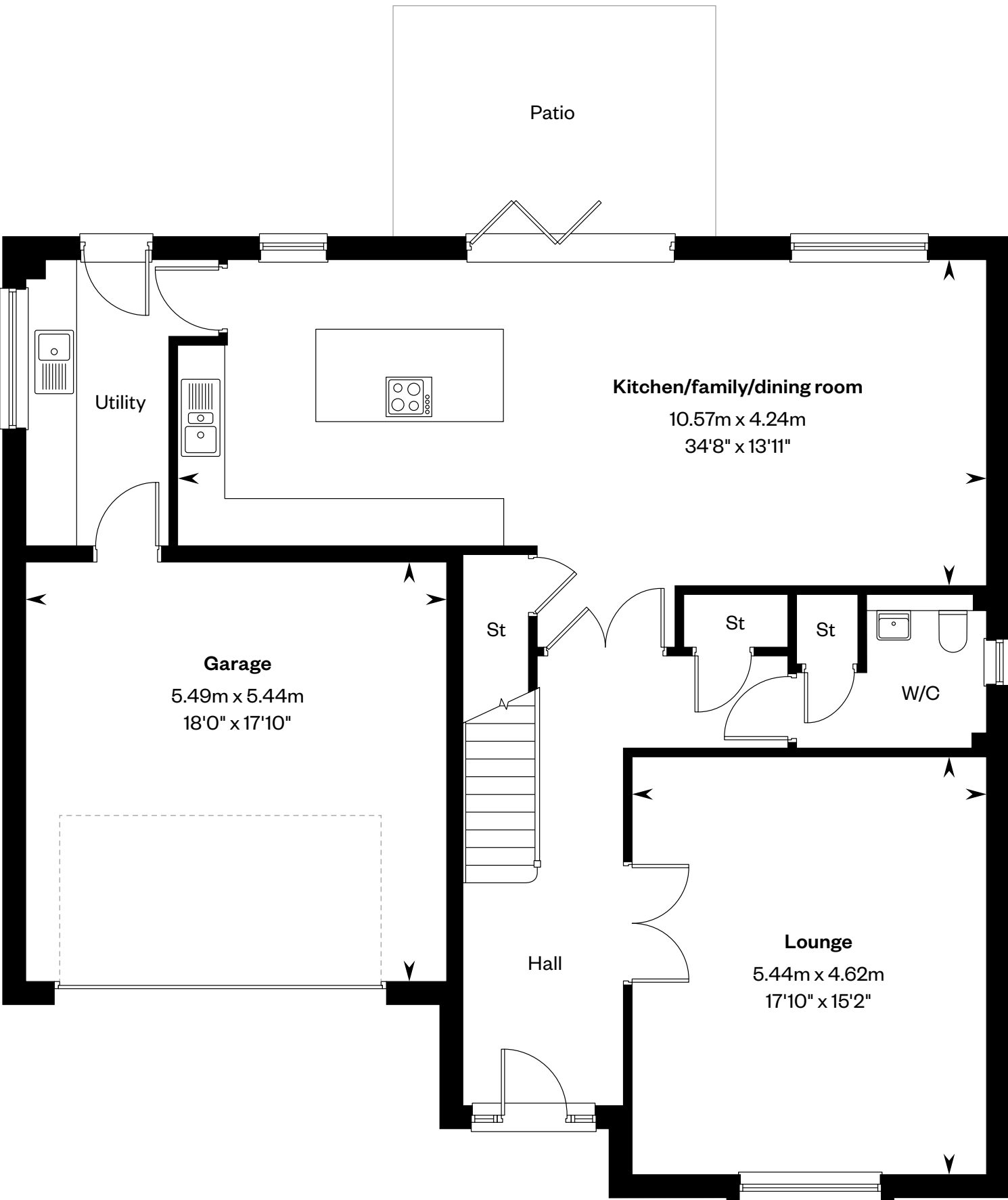
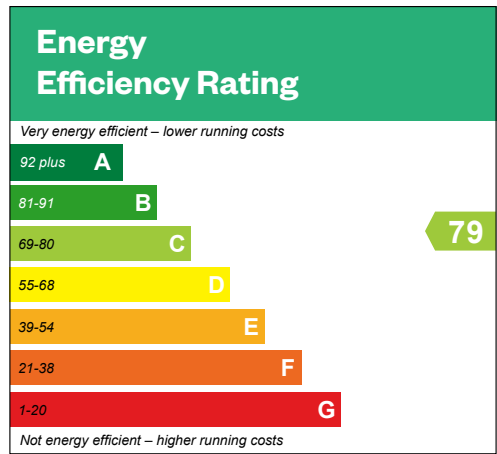
Computer Generated Image – A typical Moncrief

The Moncrief

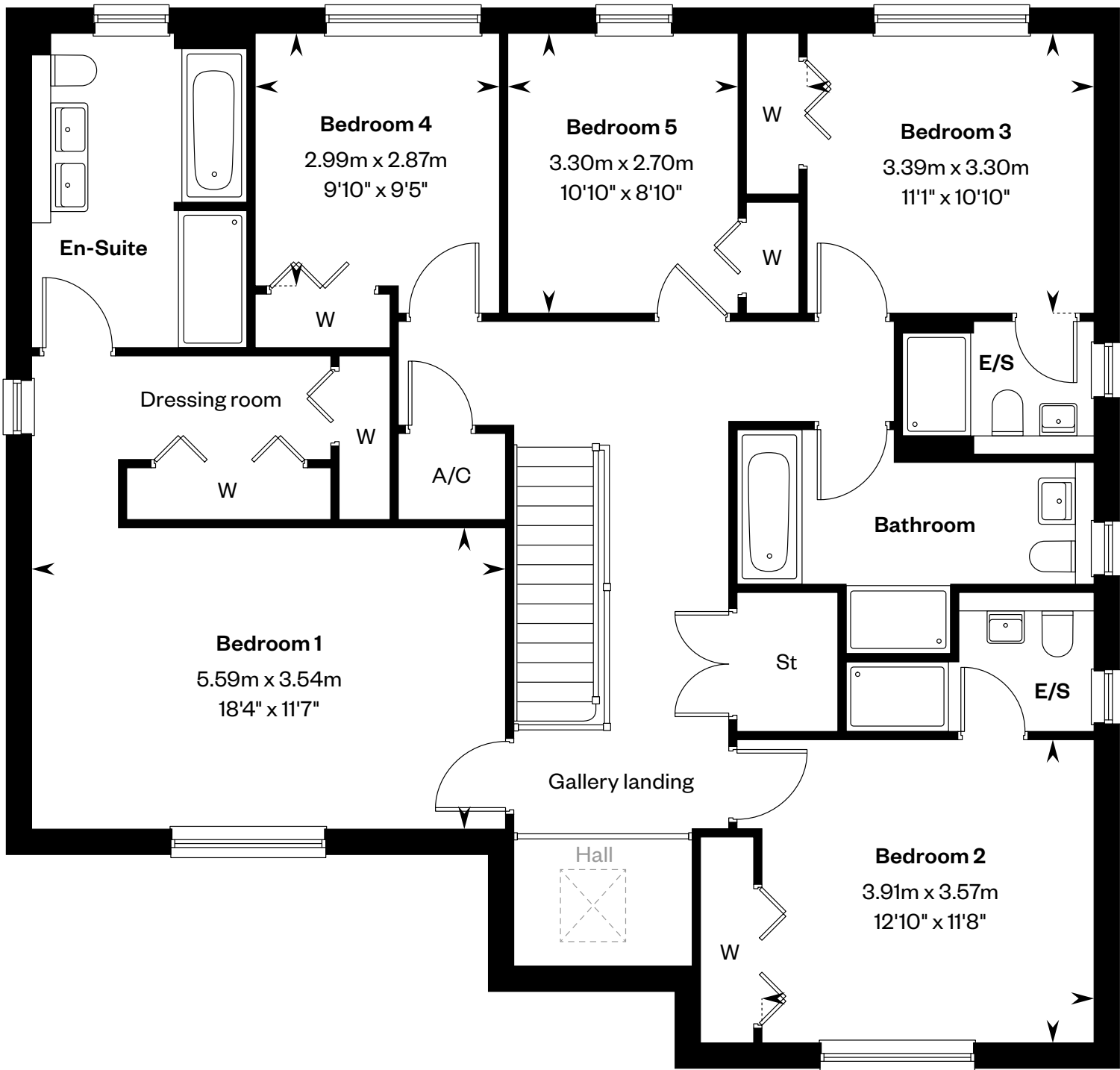
5 bedroom detached home

Plots 23 & 25 – as shown

Plots 4, 31, 42, 49, 55 & 68 – handed



Ground floor



First floor

Please ask your Sales Consultant for further details. A/C: Airing cupboard. E/S: En-Suite. St: Store cupboard. W: Wardrobe. : Roof light/velux window.

IMPORTANT NOTICE TO CUSTOMERS: The Consumer Protection from Unfair Trading Regulations 2008. Cala Homes (West) Limited operates a policy of continual product development and the specifications outlined in this brochure are indicative only. The computer generated images and photographs do not necessarily represent the actual finishings/elevation or treatments, landscaping, furnishings and fittings at this development. Information contained is accurate at date of publication on 07.01.26. See the main brochure for the full Consumer Protection statement.

The Ramsay

5 bedroom detached home



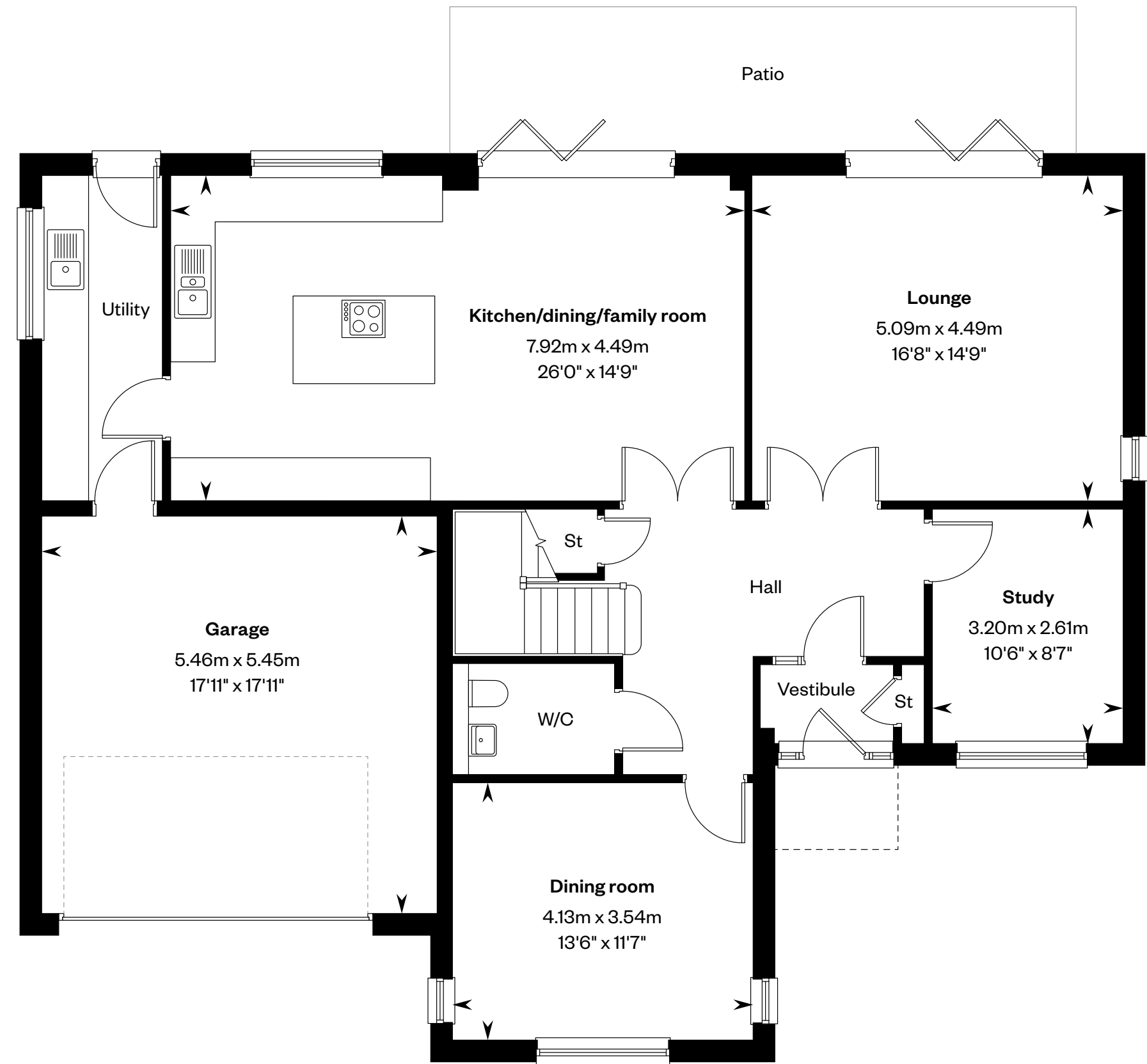
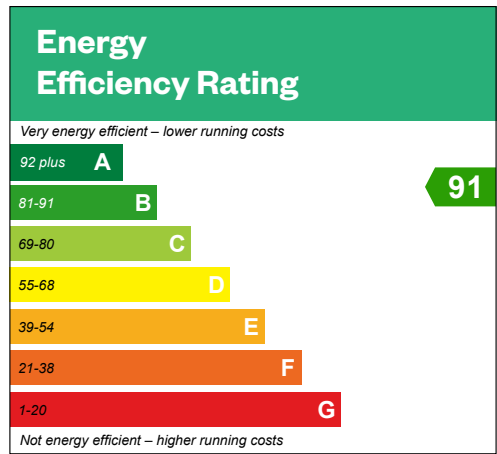
Computer Generated Image - A typical Ramsay

The Ramsay

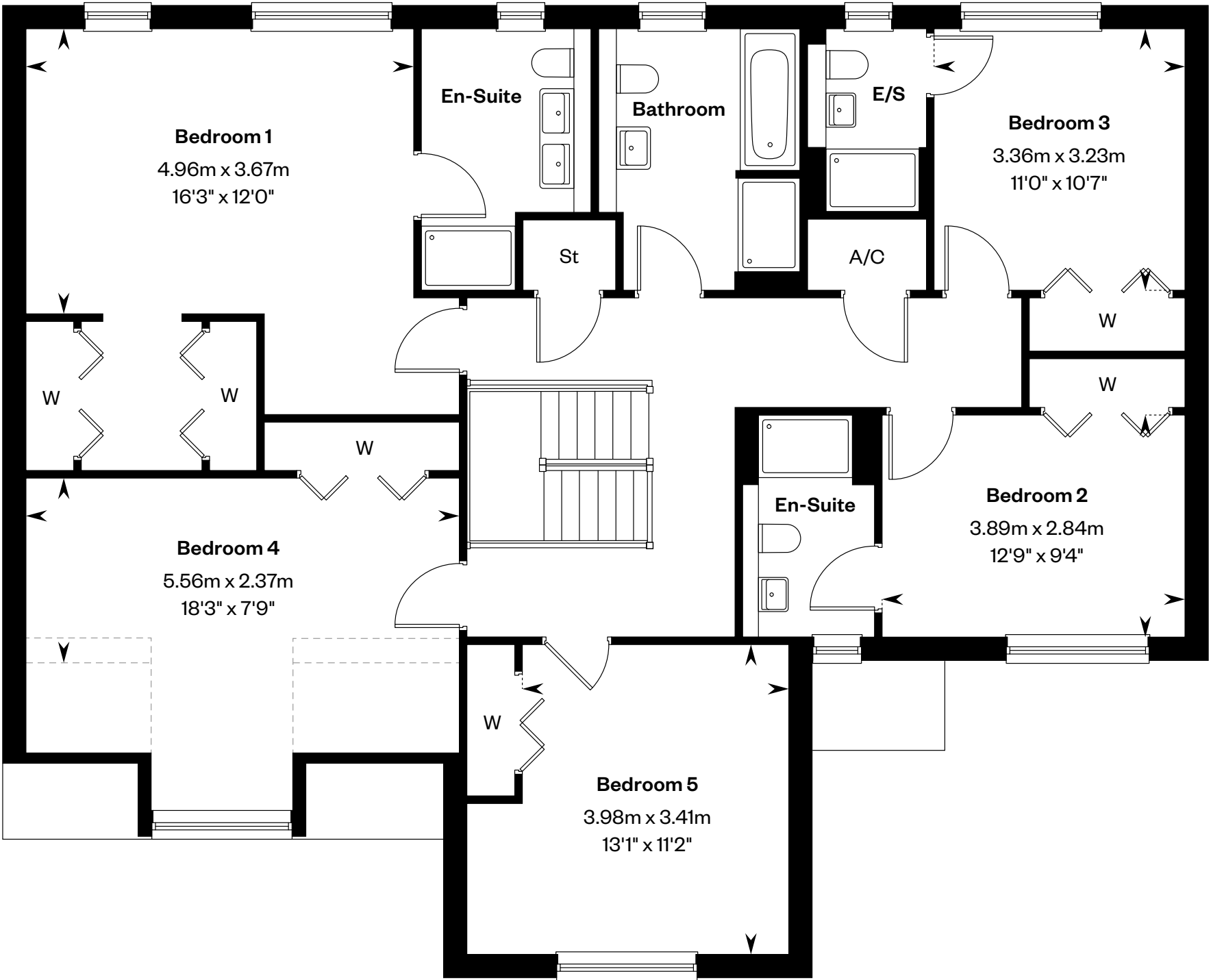
5 bedroom detached home

Plots 29, 33 & 66 – as shown

Plot 53 – handed



Ground floor



First floor

Please ask your Sales Consultant for further details. A/C: Airing cupboard. E/S: En-Suite. St: Store cupboard. W: Wardrobe. : Roof light/velux window. -----: Dotted lines denote reduced head height.

IMPORTANT NOTICE TO CUSTOMERS: The Consumer Protection from Unfair Trading Regulations 2008. Cala Homes (West) Limited operates a policy of continual product development and the specifications outlined in this brochure are indicative only. The computer generated images and photographs do not necessarily represent the actual finishings/elevation or treatments, landscaping, furnishings and fittings at this development. Information contained is accurate at date of publication on 07.01.26. See the main brochure for the full Consumer Protection statement.

The Ranald

5 bedroom detached home



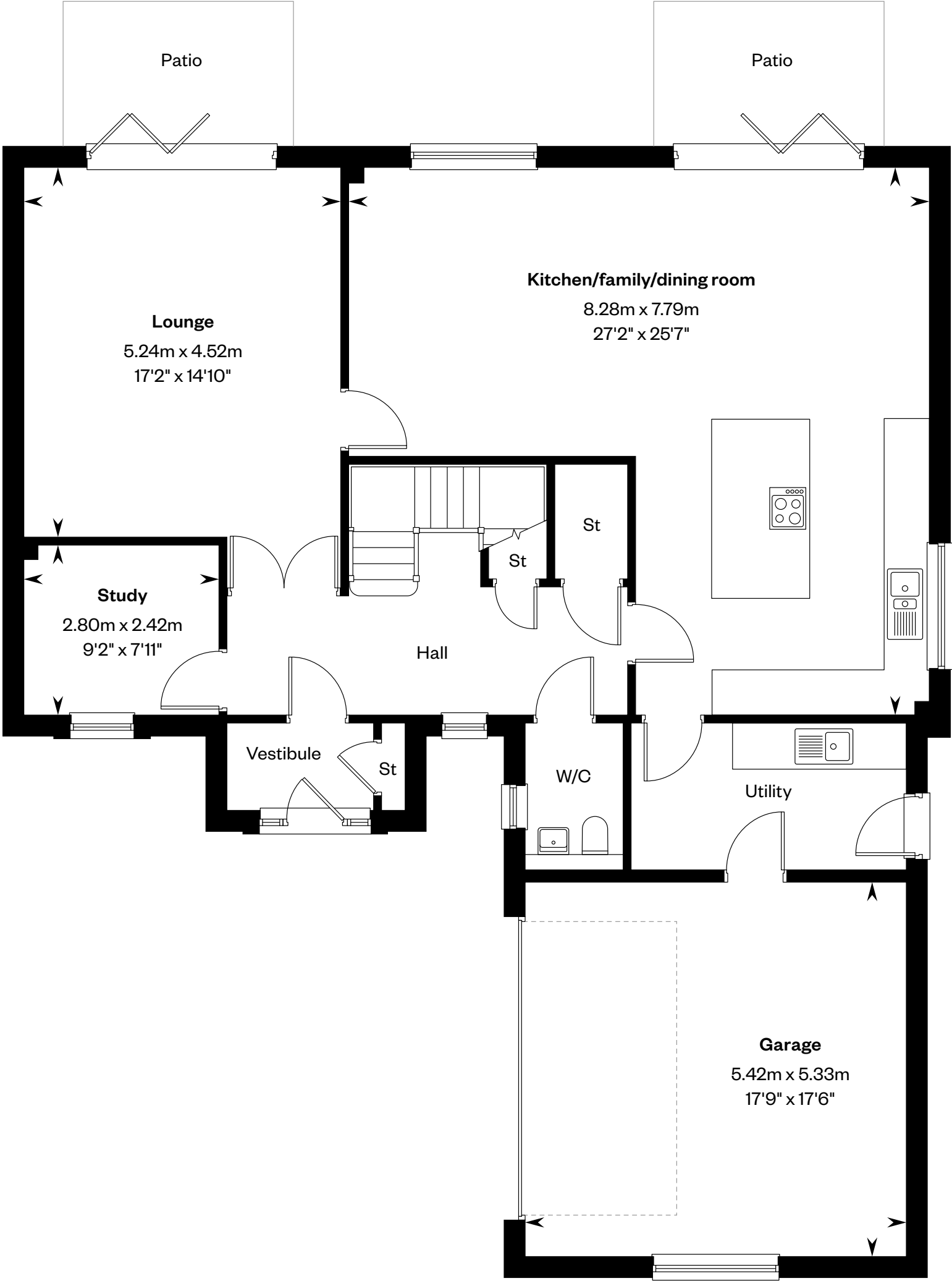
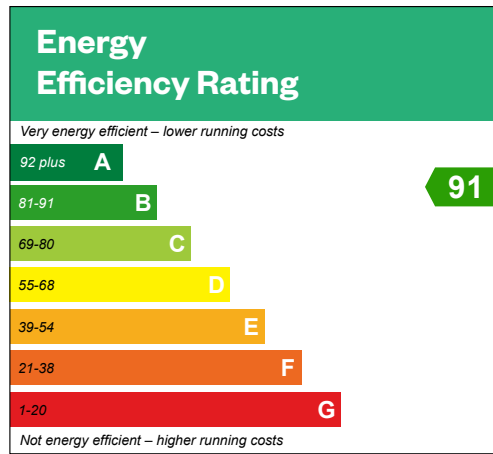
Computer Generated Image – A typical Ranald

The Ranald

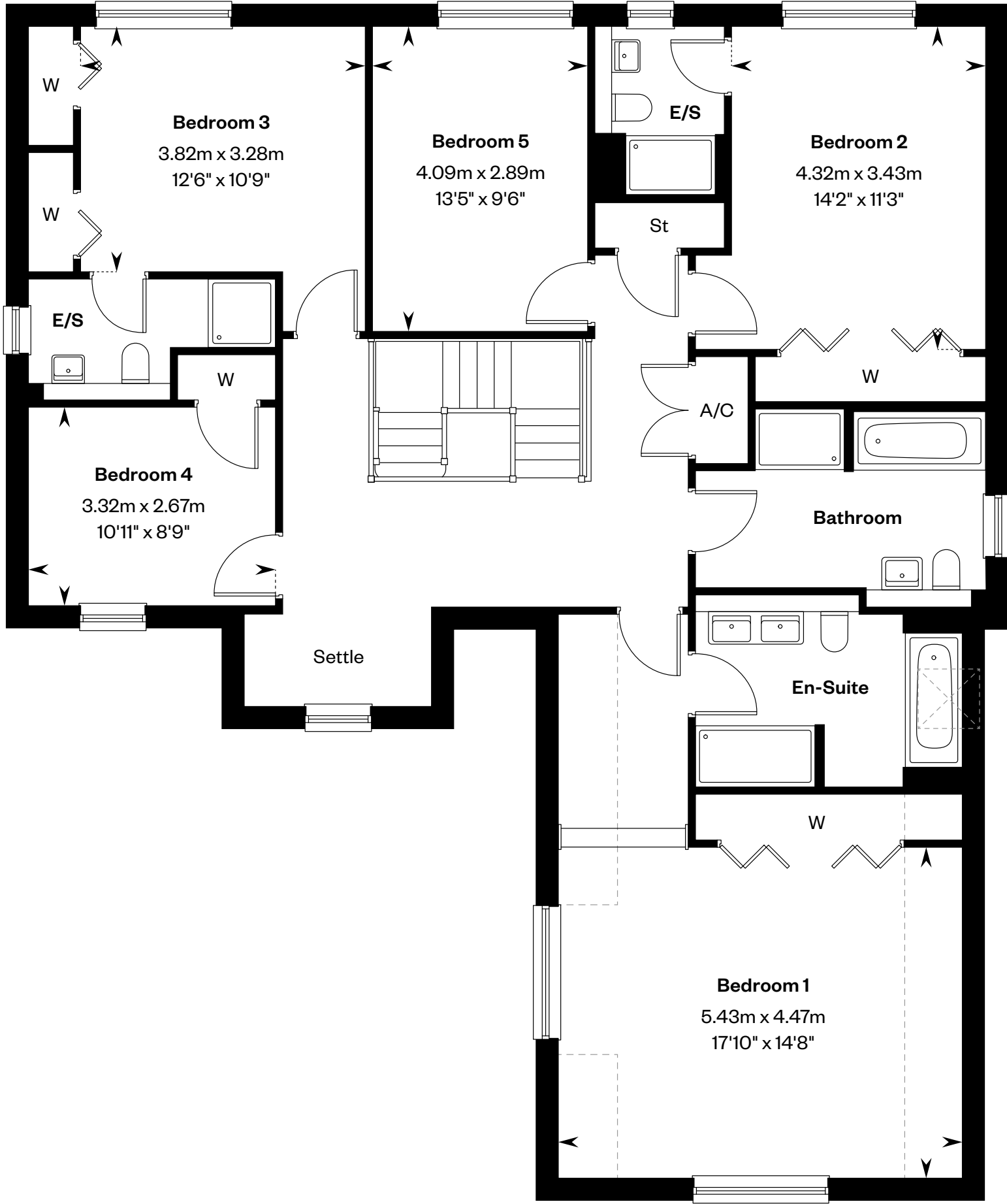
5 bedroom detached home

Plots 30 & 38 – as shown

Plots 37 & 52 – handed



Ground floor



First floor

Please ask your Sales Consultant for further details. A/C: Airing cupboard. E/S: En-Suite. St: Store cupboard. W: Wardrobe. : Roof light/velux window. - - - -: Dotted lines denote reduced head height.

IMPORTANT NOTICE TO CUSTOMERS: The Consumer Protection from Unfair Trading Regulations 2008. Cala Homes (West) Limited operates a policy of continual product development and the specifications outlined in this brochure are indicative only. The computer generated images and photographs do not necessarily represent the actual finishings/elevation or treatments, landscaping, furnishings and fittings at this development. Information contained is accurate at date of publication on 07.01.26. See the main brochure for the full Consumer Protection statement.