

The Allan

3 bedroom terraced home



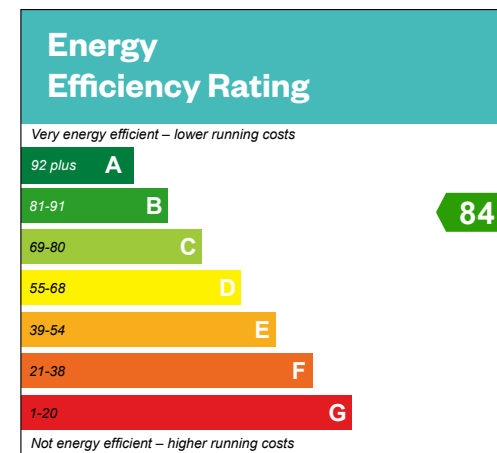
Computer Generated Image - A typical Allan

The Allan

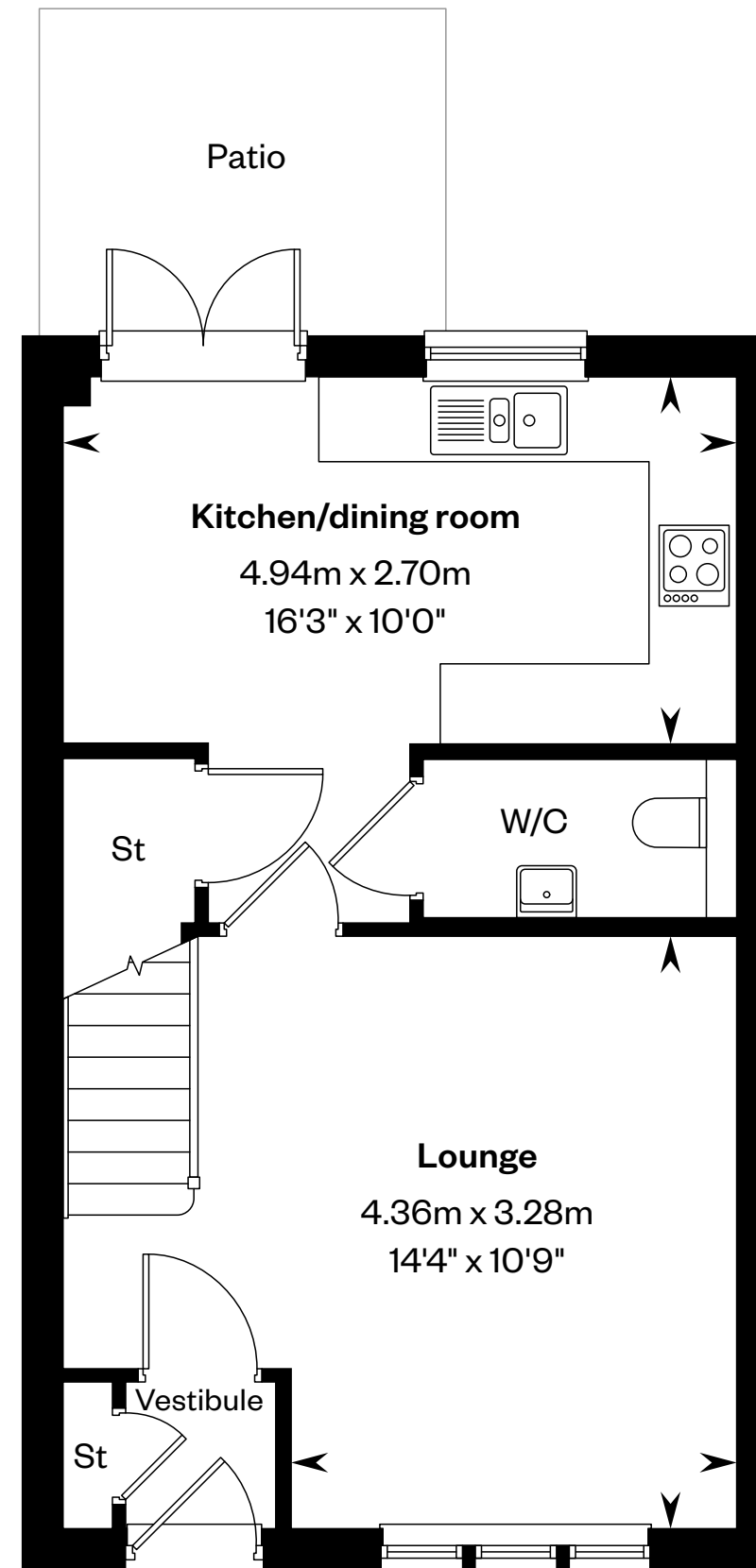
3 bedroom terraced home

Plots 8, 9, 13, 15, 26, 27, 42,
52 & 53 – as shown

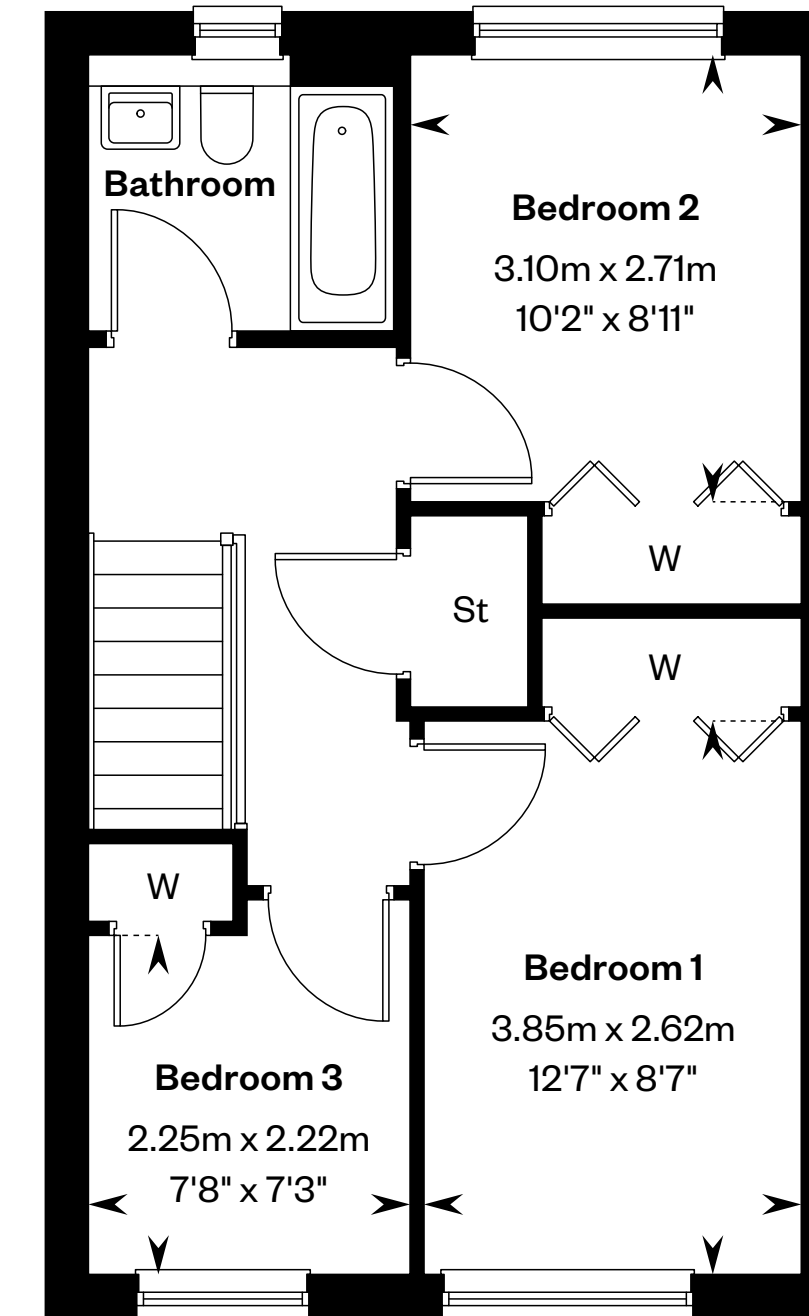
Plots 10, 14, 25 & 54 – handed



This is a Predicted Energy Assessment for properties that are incomplete. Once the property is completed, this rating will be updated and an official Energy Performance Certificate will be created for the property.



Ground floor



First floor

Please ask your Sales Consultant for further details. St: Store cupboard. W: Wardrobe.

IMPORTANT NOTICE TO CUSTOMERS: The Consumer Protection from Unfair Trading Regulations 2008. Cala Homes (North) Limited operates a policy of continual product development and the specifications outlined in this brochure are indicative only. The computer generated images and photographs do not necessarily represent the actual finishings/elevation or treatments, landscaping, furnishings and fittings at this development. Information contained is accurate at date of publication on 22.08.24. See the main brochure for the full Consumer Protection statement.

The Arisaig

3 bedroom terraced home



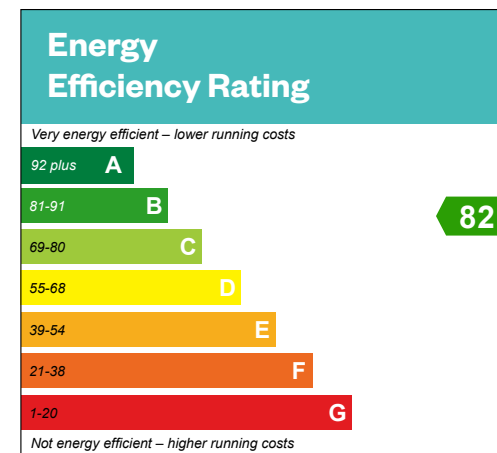
Computer Generated Image - A typical Arisaig

The Arisaig

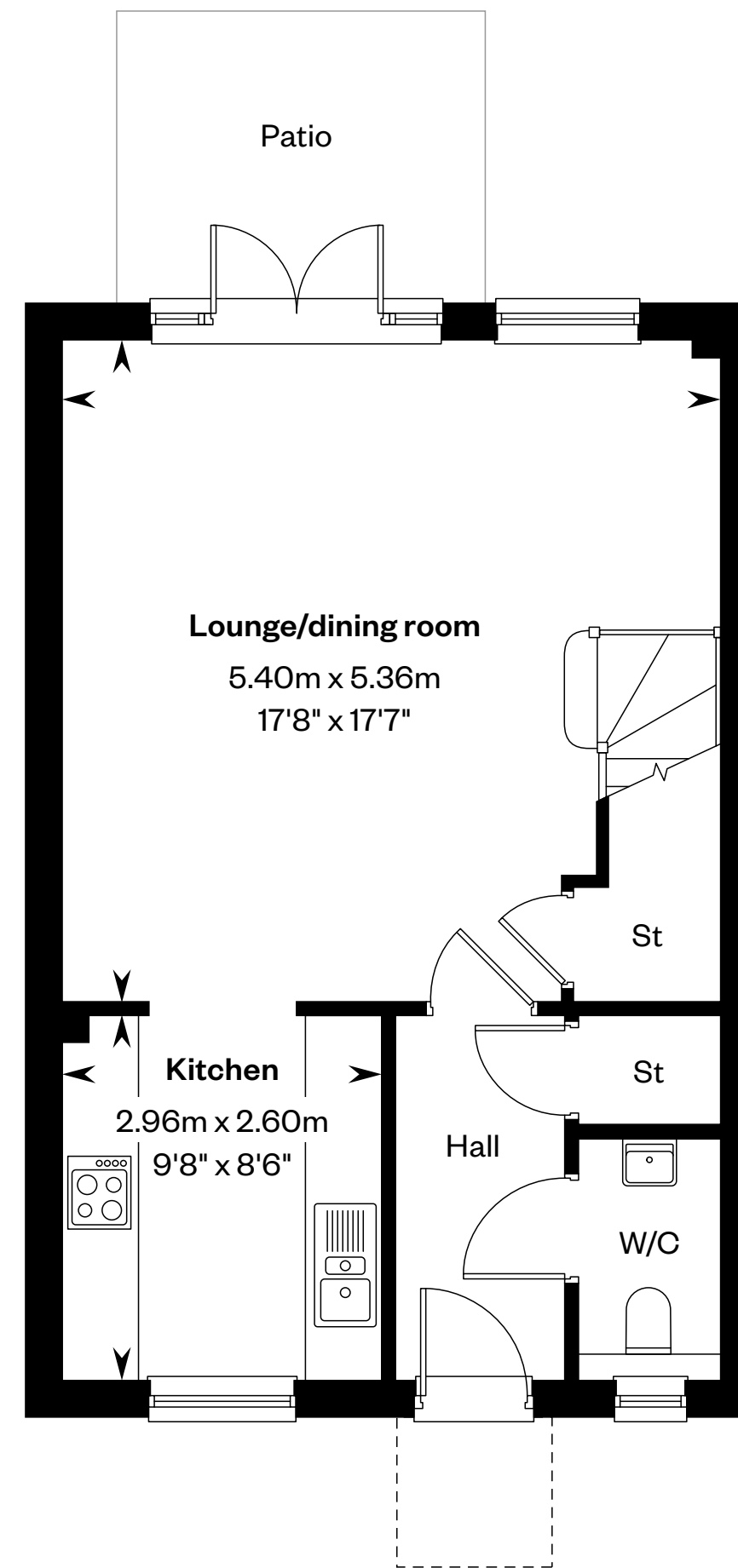
3 bedroom terraced home

Plots 7, 59, 60 & 64 – as shown

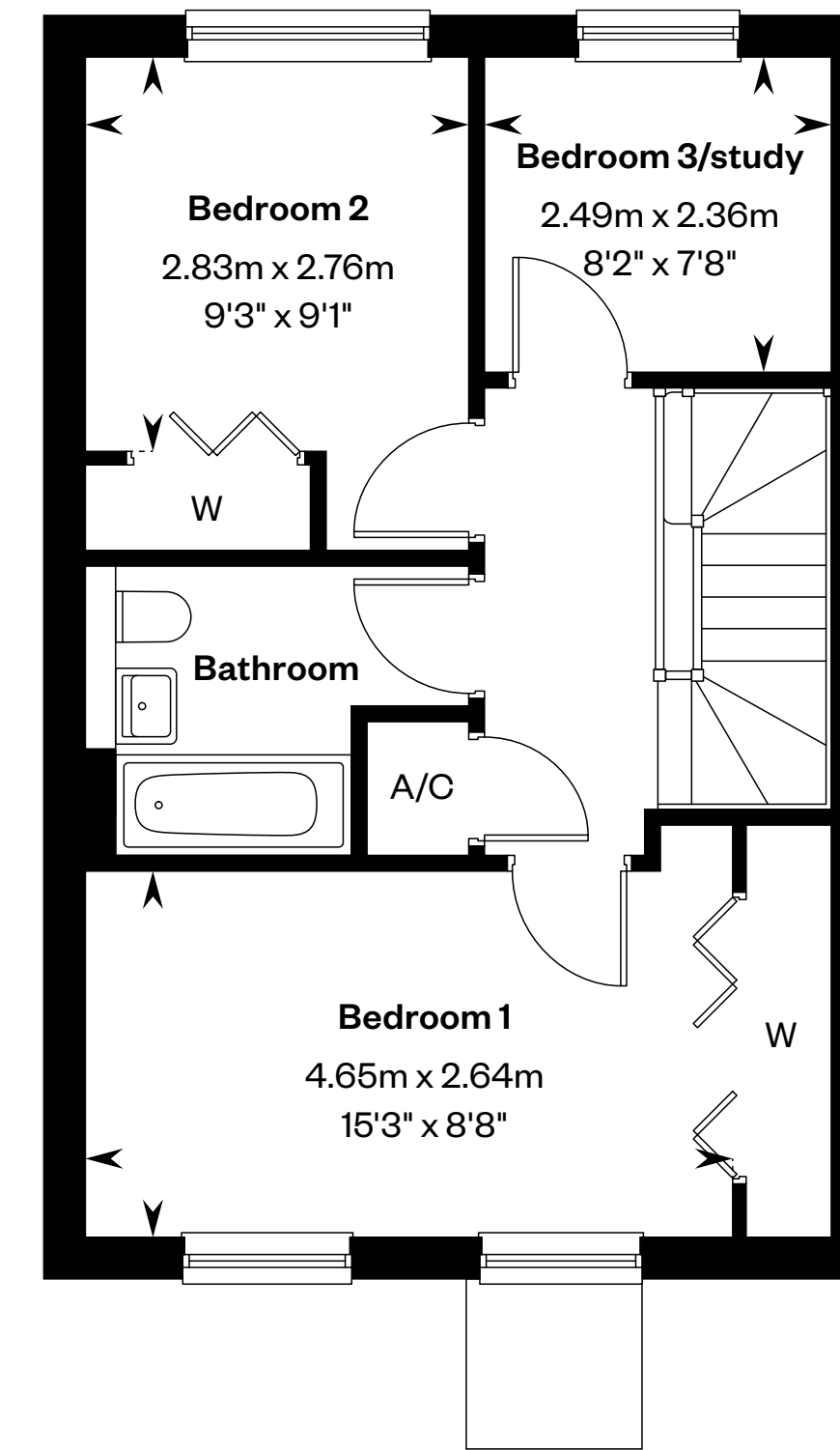
Plots 16 & 63 – handed



This is a Predicted Energy Assessment for properties that are incomplete. Once the property is completed, this rating will be updated and an official Energy Performance Certificate will be created for the property.



Ground floor



First floor

Please ask your Sales Consultant for further details. St: Store cupboard. W: Wardrobe.

IMPORTANT NOTICE TO CUSTOMERS: The Consumer Protection from Unfair Trading Regulations 2008. Cala Homes (North) Limited operates a policy of continual product development and the specifications outlined in this brochure are indicative only. The computer generated images and photographs do not necessarily represent the actual finishings/elevation or treatments, landscaping, furnishings and fittings at this development. Information contained is accurate at date of publication on 22.08.24. See the main brochure for the full Consumer Protection statement.

The Arran

3 bedroom semi-detached or terraced home

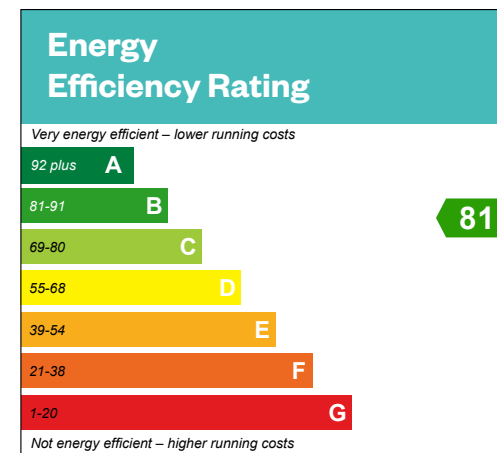


The Arran

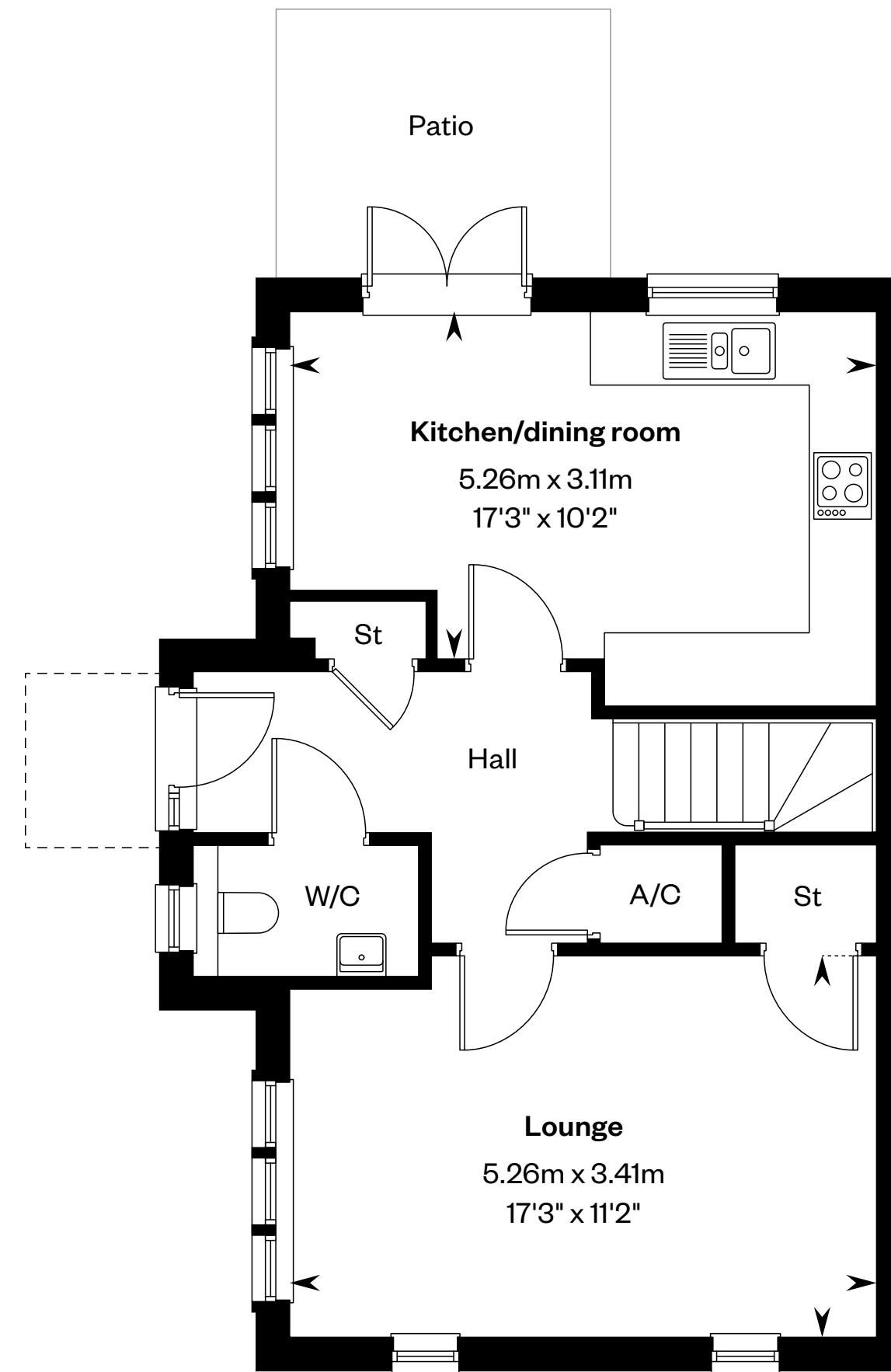
3 bedroom semi-detached or terraced home

Plots 43 & 62 – as shown

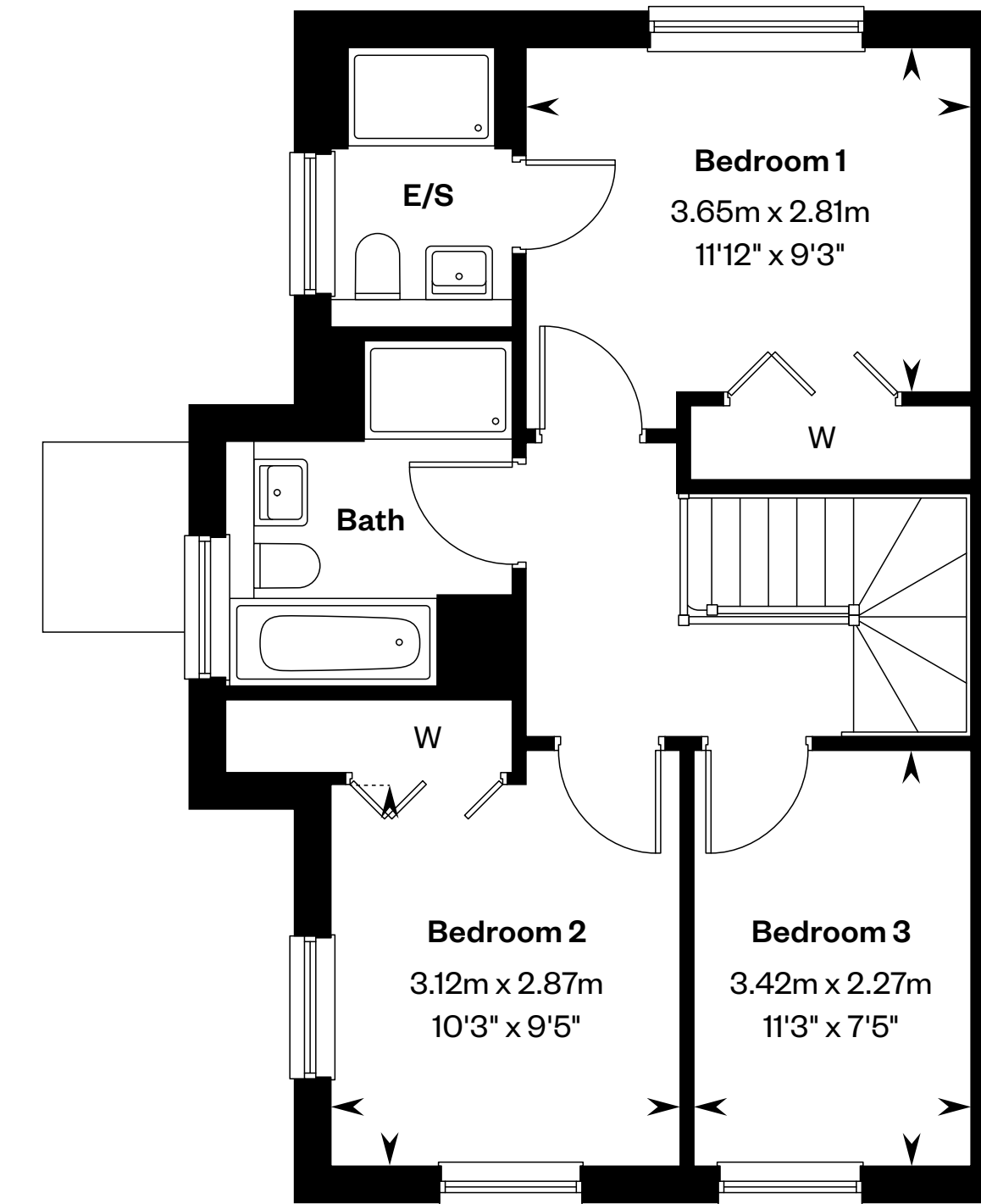
Plot 61 – handed



This is a Predicted Energy Assessment for properties that are incomplete. Once the property is completed, this rating will be updated and an official Energy Performance Certificate will be created for the property.



Ground floor



First floor

Please ask your Sales Consultant for further details. St: Store cupboard. W: Wardrobe.

IMPORTANT NOTICE TO CUSTOMERS: The Consumer Protection from Unfair Trading Regulations 2008. Cala Homes (North) Limited operates a policy of continual product development and the specifications outlined in this brochure are indicative only. The computer generated images and photographs do not necessarily represent the actual finishings/elevation or treatments, landscaping, furnishings and fittings at this development. Information contained is accurate at date of publication on 22.08.24. See the main brochure for the full Consumer Protection statement.

The Avon

3 bedroom semi-detached or terraced home

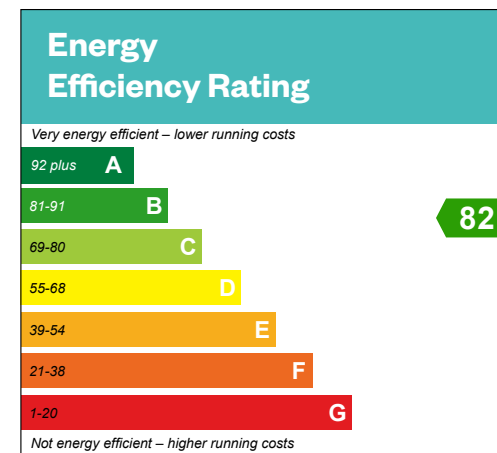


The Avon

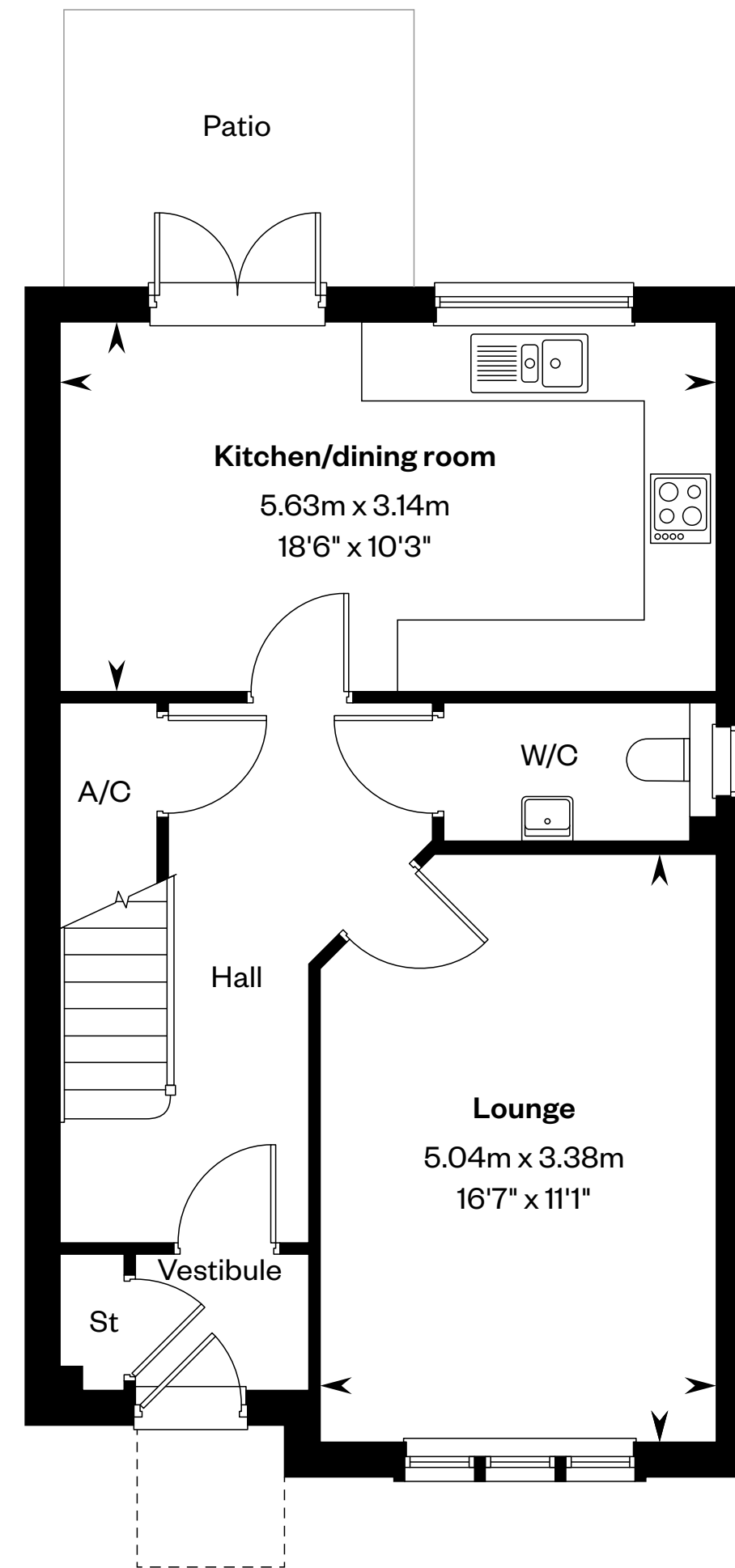
3 bedroom semi-detached or terraced home

Plots 5, 11, 23, 28, 51, 56 & 58 – as shown

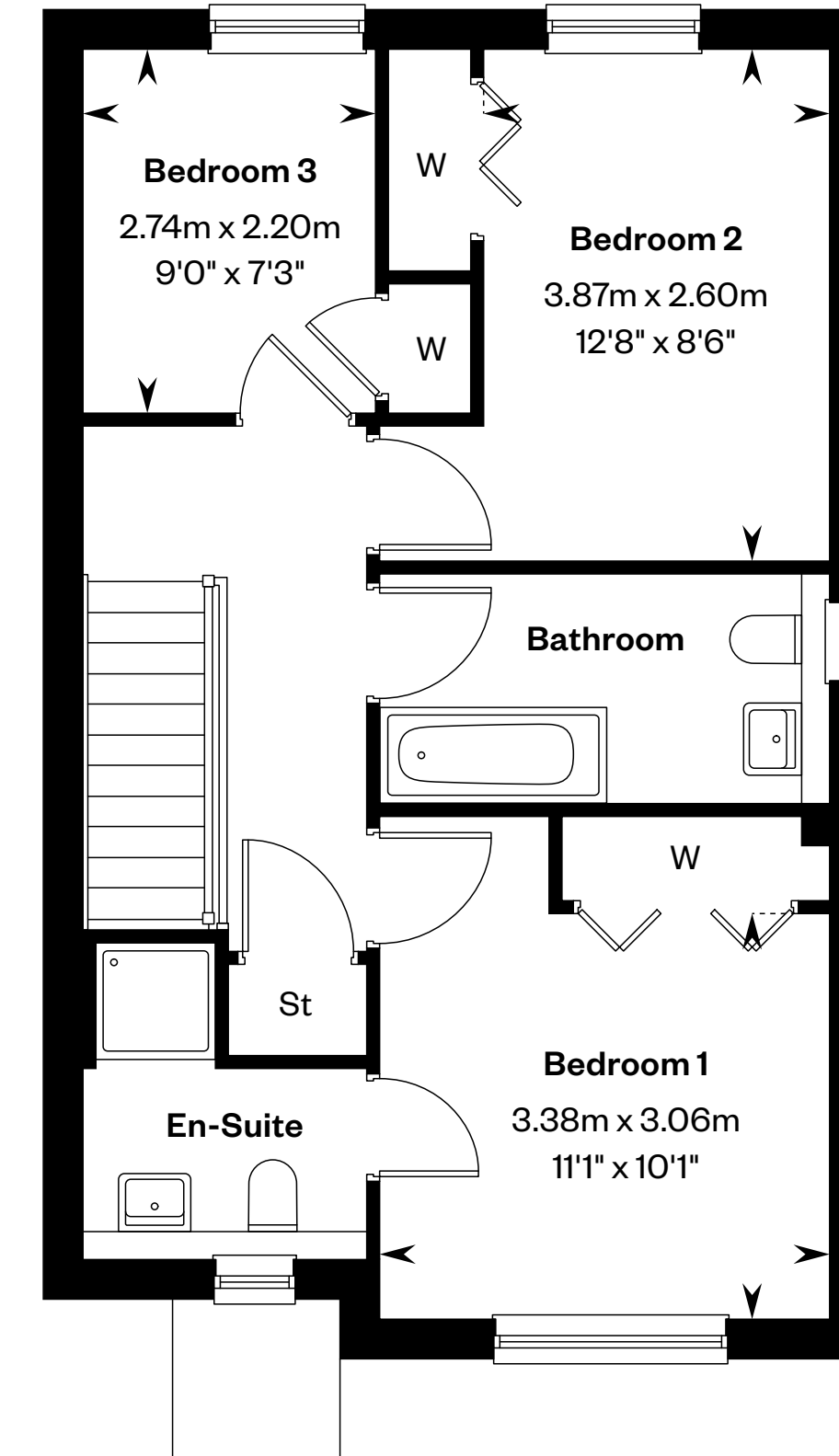
Plots 6, 12, 24, 29, 41, 55, 57 & 65 – handed



This is a Predicted Energy Assessment for properties that are incomplete. Once the property is completed, this rating will be updated and an official Energy Performance Certificate will be created for the property.



Ground floor



First floor

Please ask your Sales Consultant for further details. St: Store cupboard. W: Wardrobe.

IMPORTANT NOTICE TO CUSTOMERS: The Consumer Protection from Unfair Trading Regulations 2008. Cala Homes (North) Limited operates a policy of continual product development and the specifications outlined in this brochure are indicative only. The computer generated images and photographs do not necessarily represent the actual finishings/elevation or treatments, landscaping, furnishings and fittings at this development. Information contained is accurate at date of publication on 22.08.24. See the main brochure for the full Consumer Protection statement.

The Bargower

4 bedroom detached home

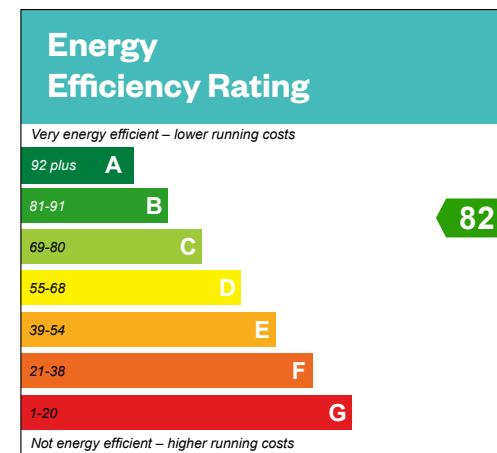


The Bargower

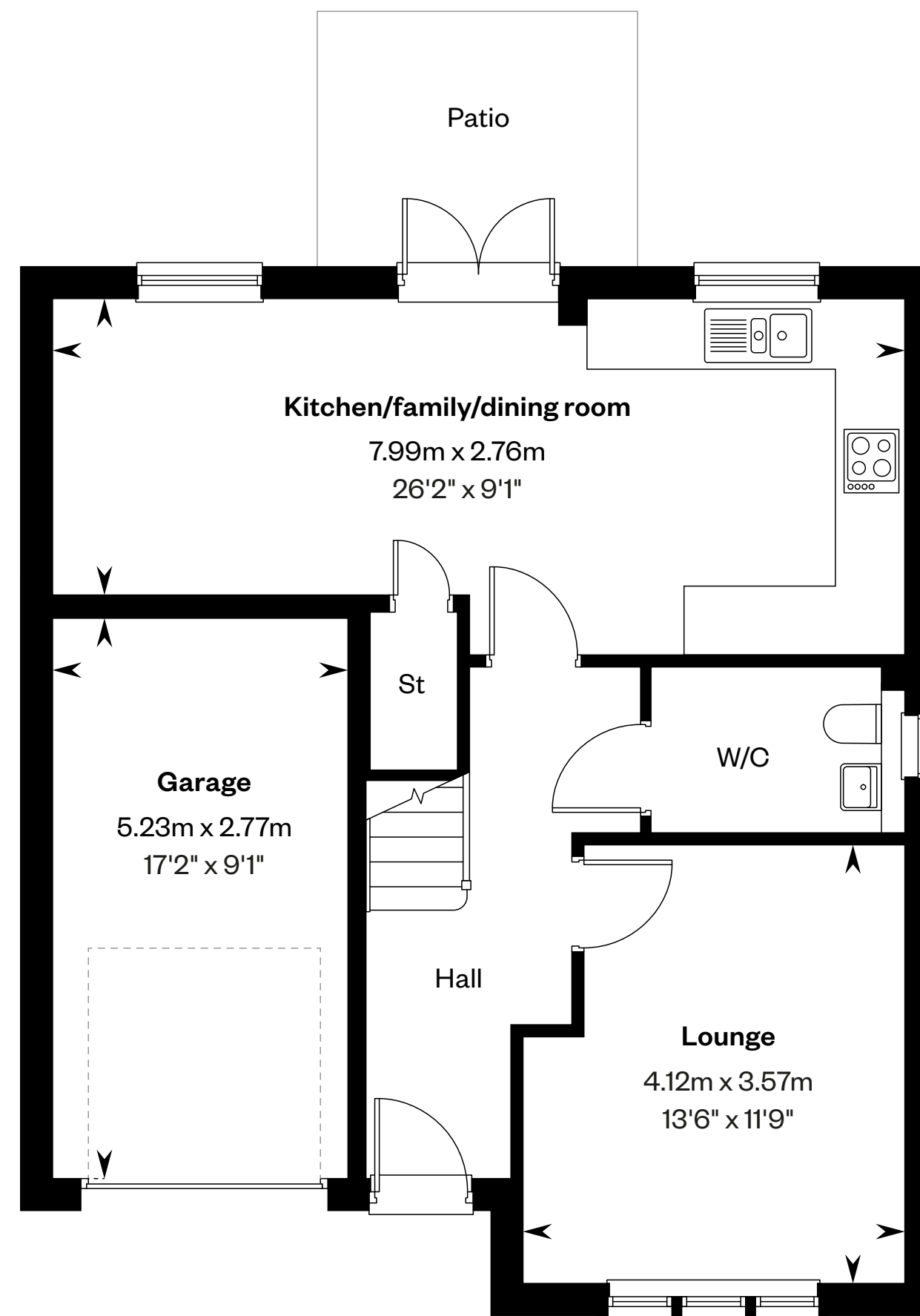
4 bedroom detached home

Plots 44 & 46 – as shown

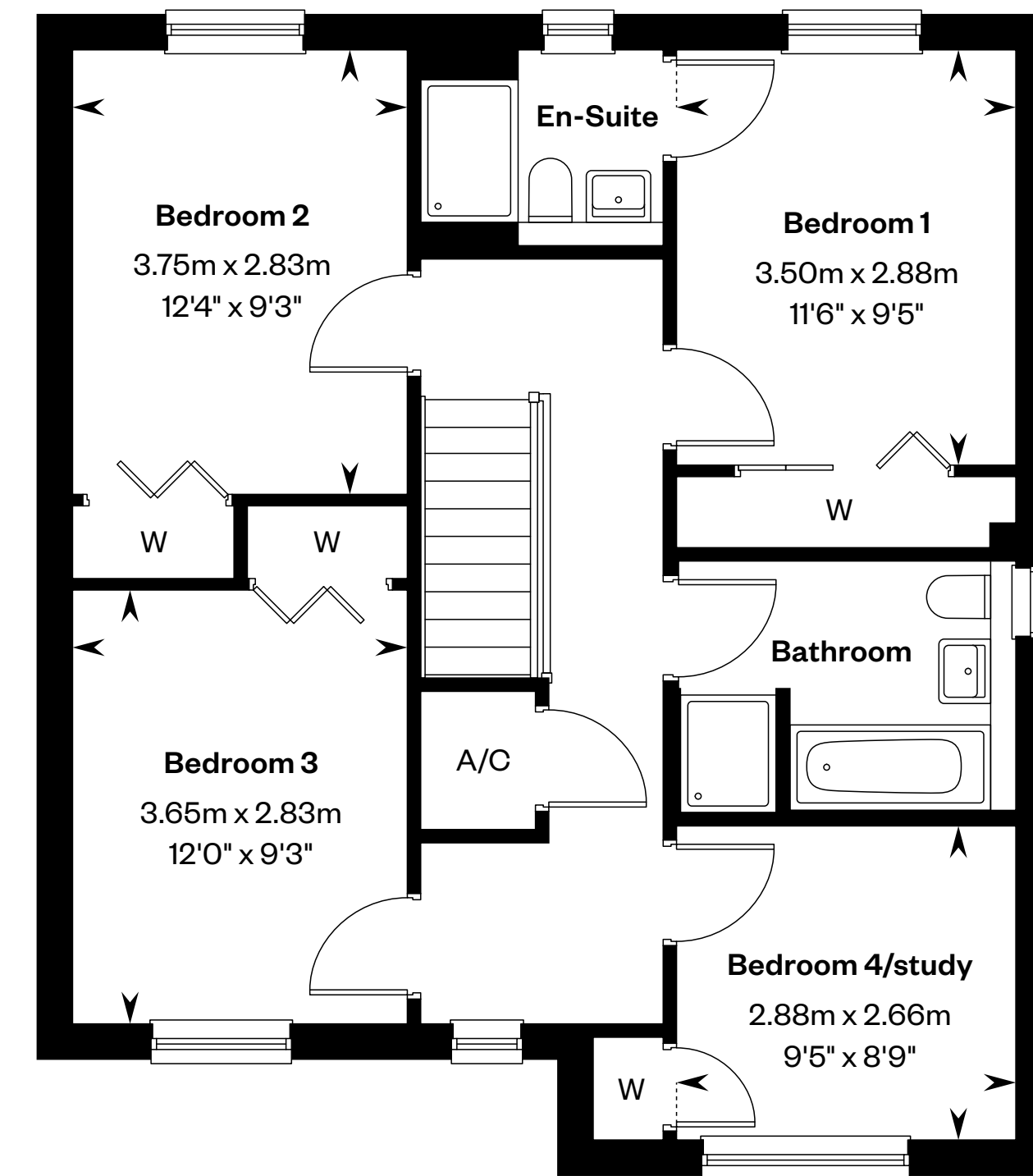
Plots 2, 18, 35 & 38 – handed



This is a Predicted Energy Assessment for properties that are incomplete. Once the property is completed, this rating will be updated and an official Energy Performance Certificate will be created for the property.



Ground floor



First floor

Please ask your Sales Consultant for further details. St: Store cupboard. W: Wardrobe.

IMPORTANT NOTICE TO CUSTOMERS: The Consumer Protection from Unfair Trading Regulations 2008. Cala Homes (North) Limited operates a policy of continual product development and the specifications outlined in this brochure are indicative only. The computer generated images and photographs do not necessarily represent the actual finishings/elevation or treatments, landscaping, furnishings and fittings at this development. Information contained is accurate at date of publication on 22.08.24. See the main brochure for the full Consumer Protection statement.

The Barrie

4 bedroom detached home

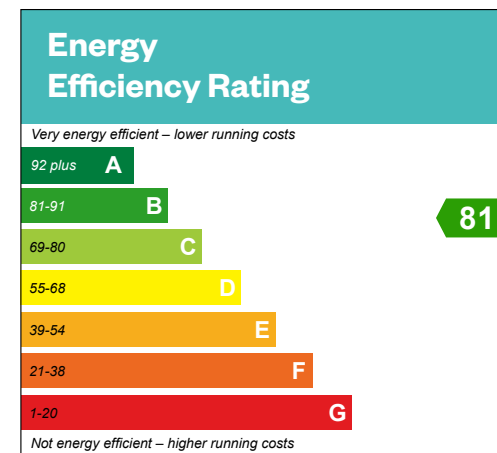


The Barrie

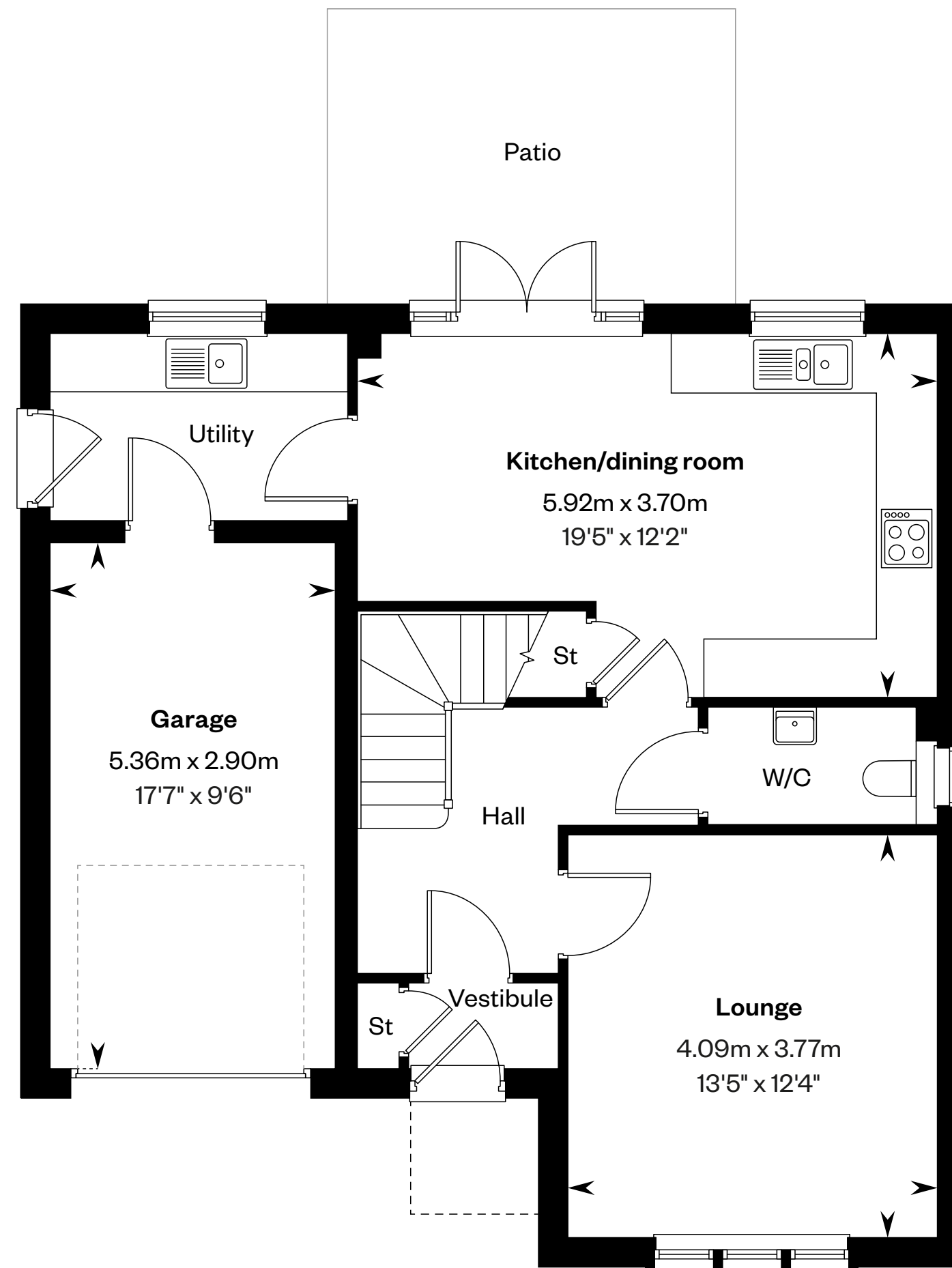
4 bedroom detached home

Plot 39 – as shown

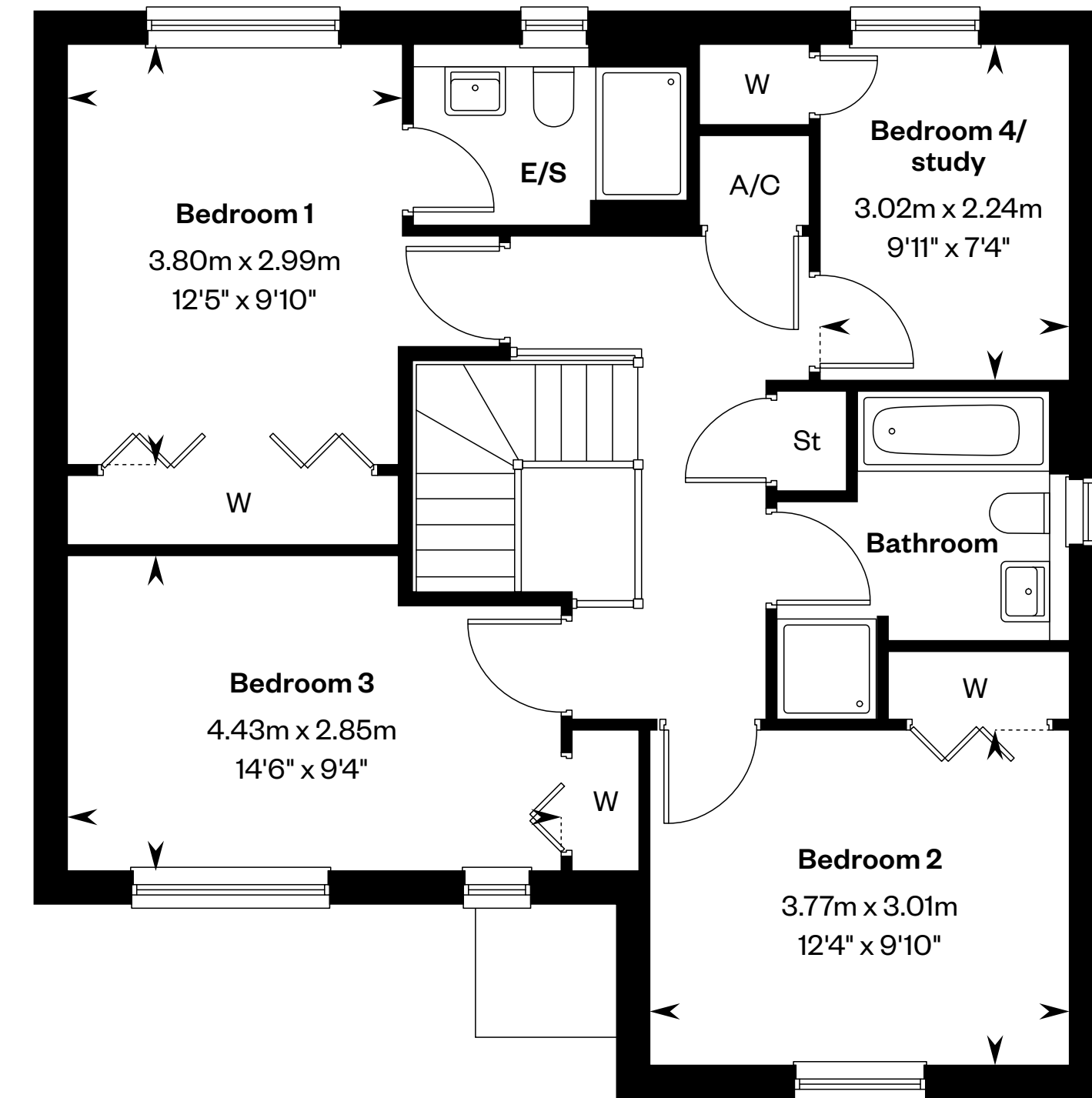
Plots 3, 31, 33, 34, 36 & 73 – handed



This is a Predicted Energy Assessment for properties that are incomplete. Once the property is completed, this rating will be updated and an official Energy Performance Certificate will be created for the property.



Ground floor



First floor

Please ask your Sales Consultant for further details. St: Store cupboard. W: Wardrobe.

IMPORTANT NOTICE TO CUSTOMERS: The Consumer Protection from Unfair Trading Regulations 2008. Cala Homes (North) Limited operates a policy of continual product development and the specifications outlined in this brochure are indicative only. The computer generated images and photographs do not necessarily represent the actual finishings/elevation or treatments, landscaping, furnishings and fittings at this development. Information contained is accurate at date of publication on 22.08.24. See the main brochure for the full Consumer Protection statement.

The Bryce

4 bedroom detached home



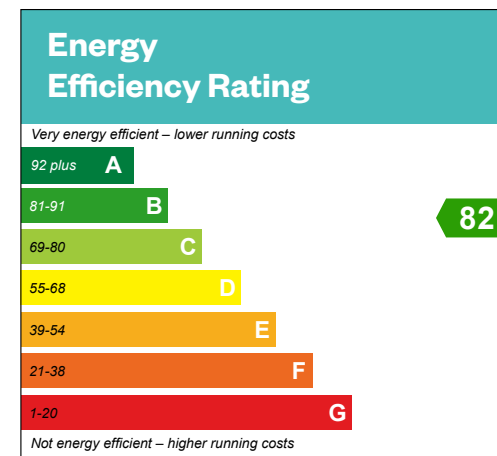
Computer Generated Image - A typical Bryce

The Bryce

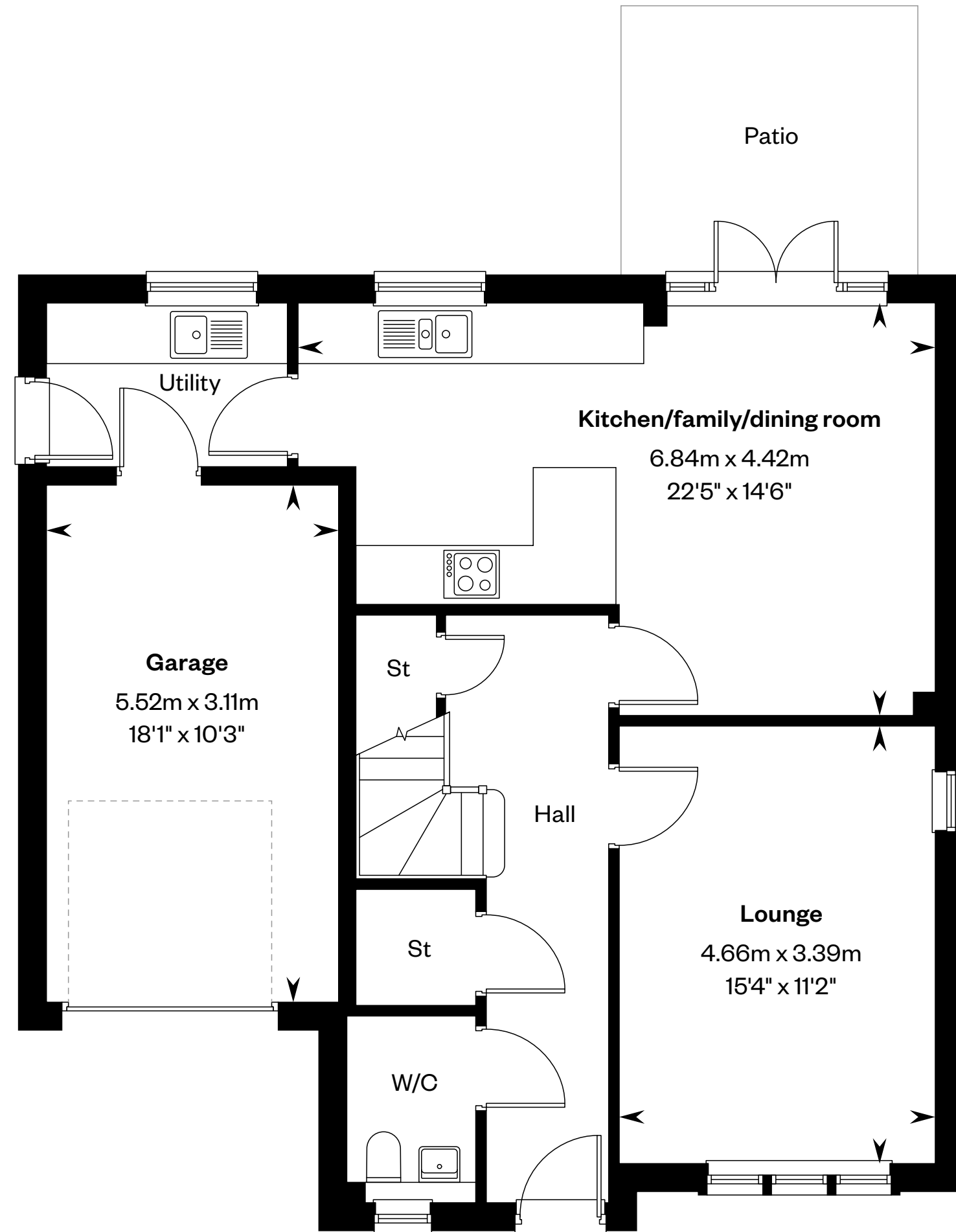
4 bedroom detached home

Plots 20, 40, 48, 69 & 71 – as shown

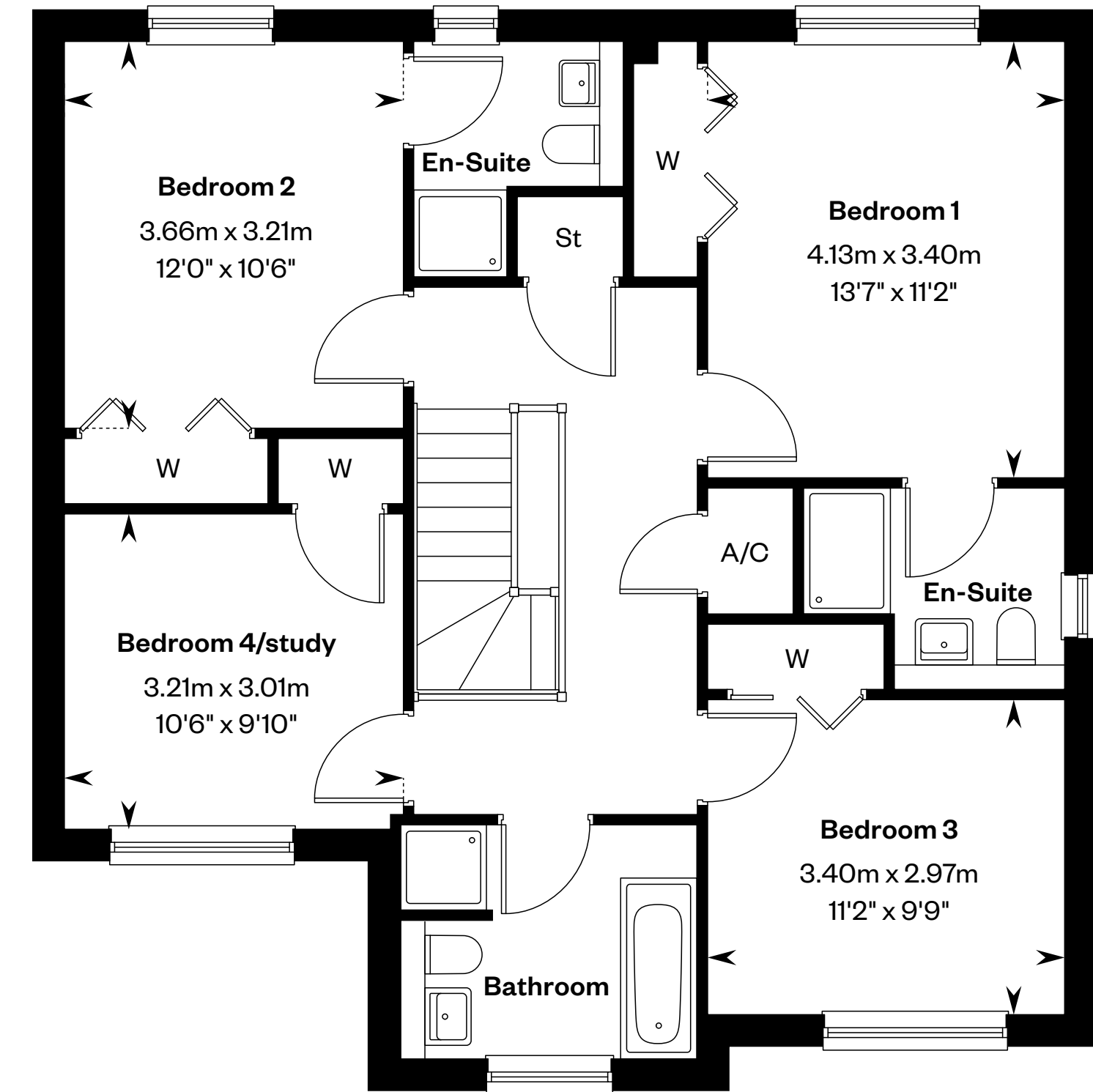
Plots 4, 21, 32, 37, 50, 66, 67 & 74 – handed



This is a Predicted Energy Assessment for properties that are incomplete. Once the property is completed, this rating will be updated and an official Energy Performance Certificate will be created for the property.



Ground floor



First floor

*The Bryce with no additional window in lounge is only applicable to plots 32, 37, 48, 66, 67, 69, 71 & 74. Please speak to a Sales Advisor for further details. St: Store cupboard. W: Wardrobe.

IMPORTANT NOTICE TO CUSTOMERS: The Consumer Protection from Unfair Trading Regulations 2008. Cala Homes (North) Limited operates a policy of continual product development and the specifications outlined in this brochure are indicative only. The computer generated images and photographs do not necessarily represent the actual finishings/elevation or treatments, landscaping, furnishings and fittings at this development. Information contained is accurate at date of publication on 22.08.24. See the main brochure for the full Consumer Protection statement.

The Cleland

4 bedroom detached home

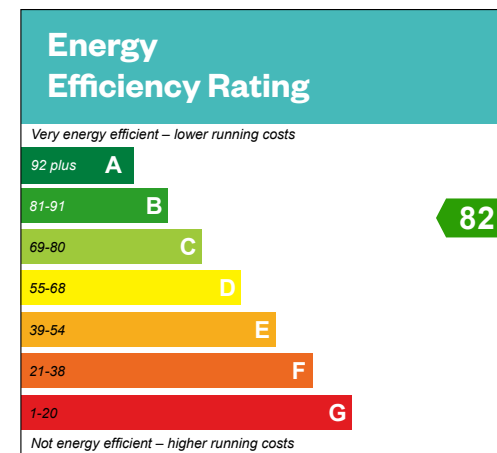


Computer Generated Image - A typical Cleland

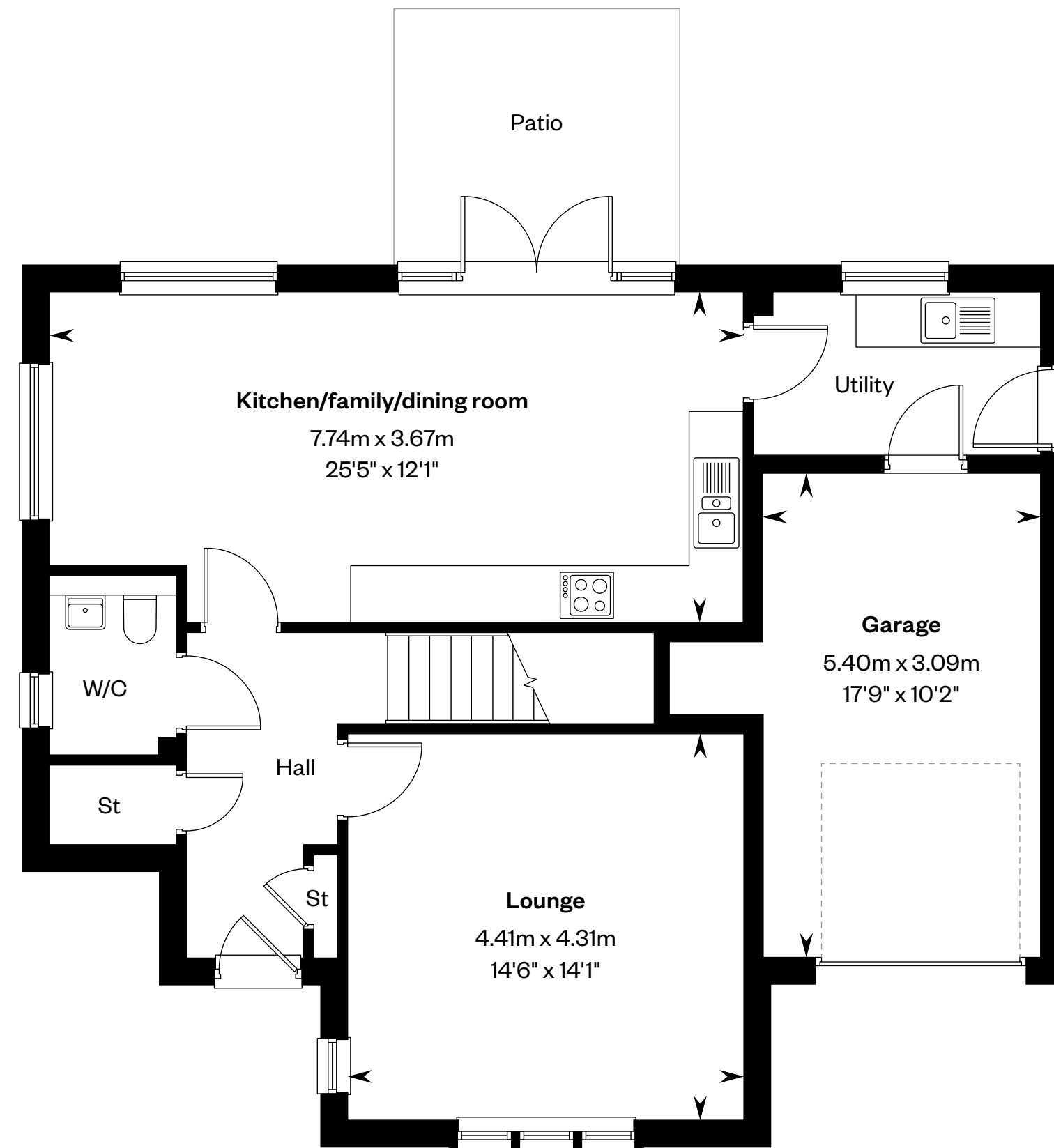
The Cleland

4 bedroom detached home

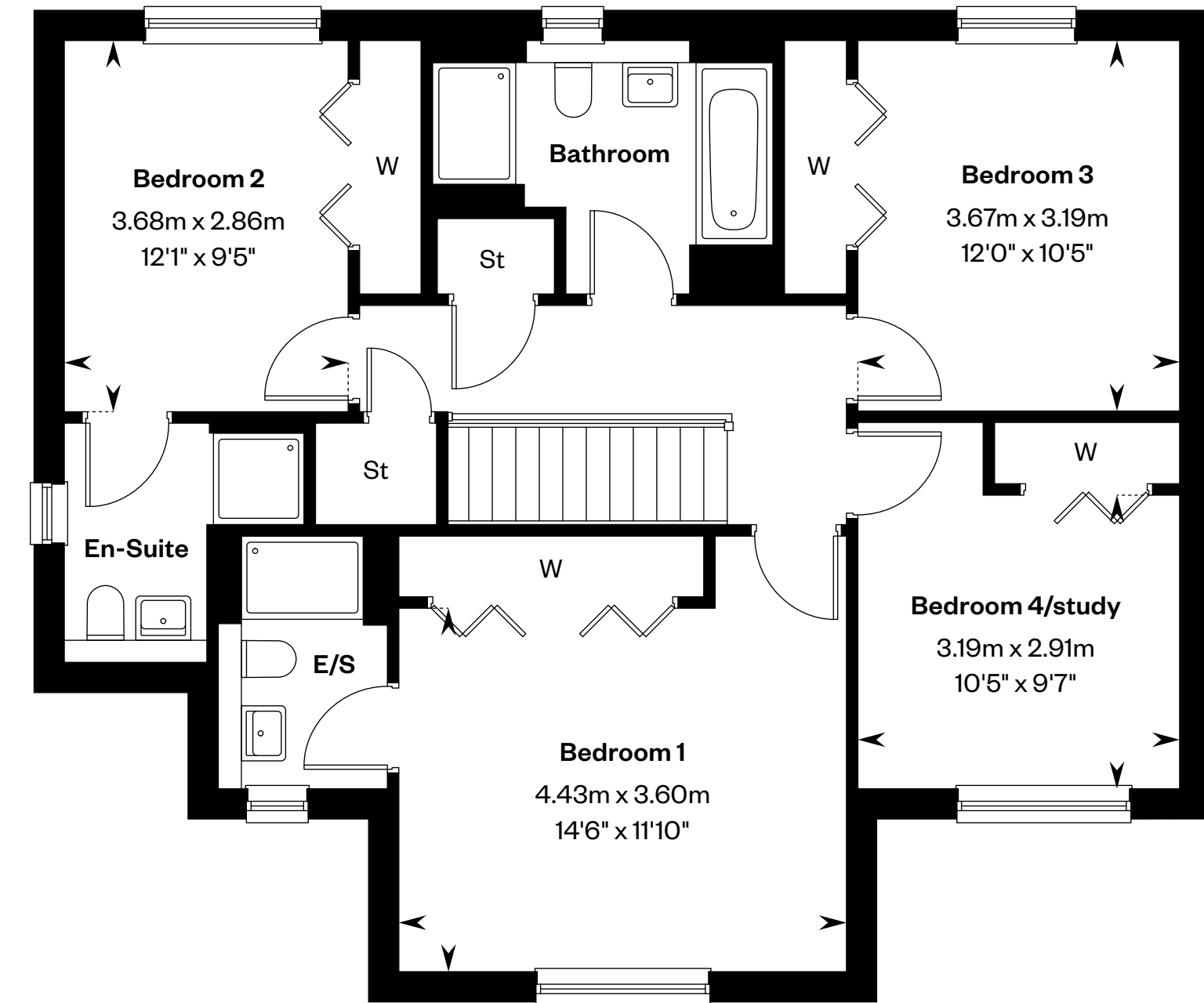
Plot 68 – as shown



This is a Predicted Energy Assessment for properties that are incomplete. Once the property is completed, this rating will be updated and an official Energy Performance Certificate will be created for the property.



Ground floor



First floor

Please ask your Sales Consultant for further details. St: Store cupboard. W: Wardrobe.

IMPORTANT NOTICE TO CUSTOMERS: The Consumer Protection from Unfair Trading Regulations 2008. Cala Homes (North) Limited operates a policy of continual product development and the specifications outlined in this brochure are indicative only. The computer generated images and photographs do not necessarily represent the actual finishings/elevation or treatments, landscaping, furnishings and fittings at this development. Information contained is accurate at date of publication on 22.08.24. See the main brochure for the full Consumer Protection statement.

The Colville

5 bedroom detached home



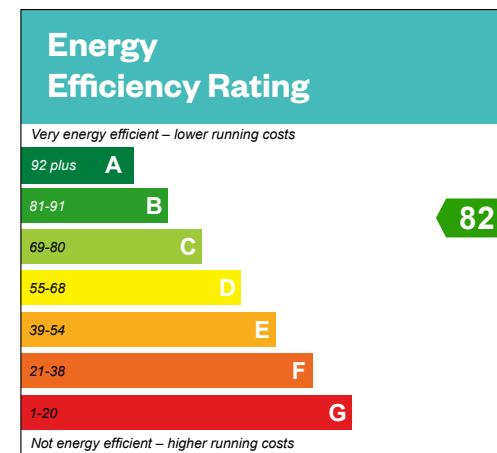
Computer Generated Image - A typical Colville

The Colville

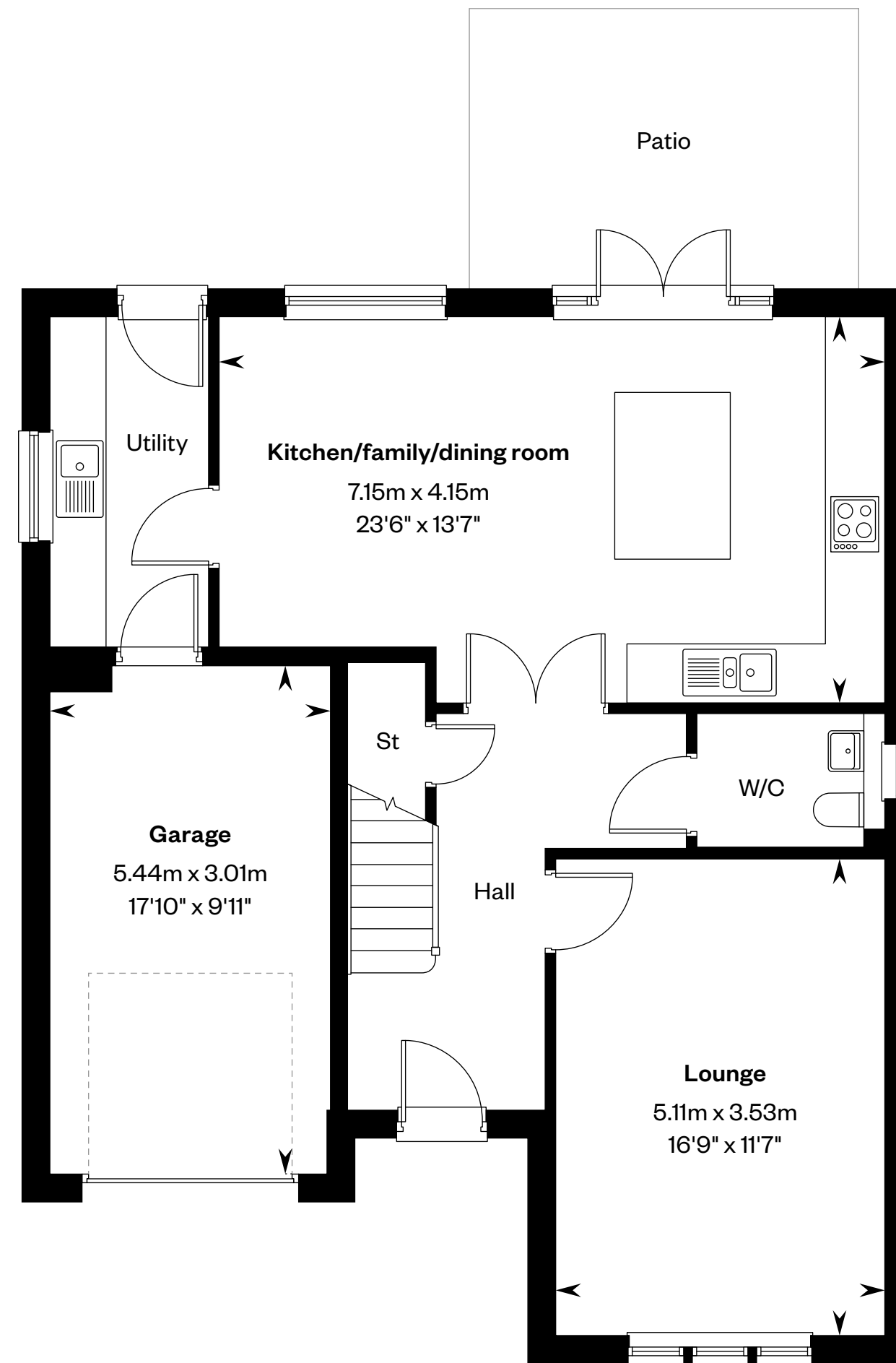
5 bedroom detached home

Plots 1, 19, 30, 45, 47, 49,
70 & 72 – as shown

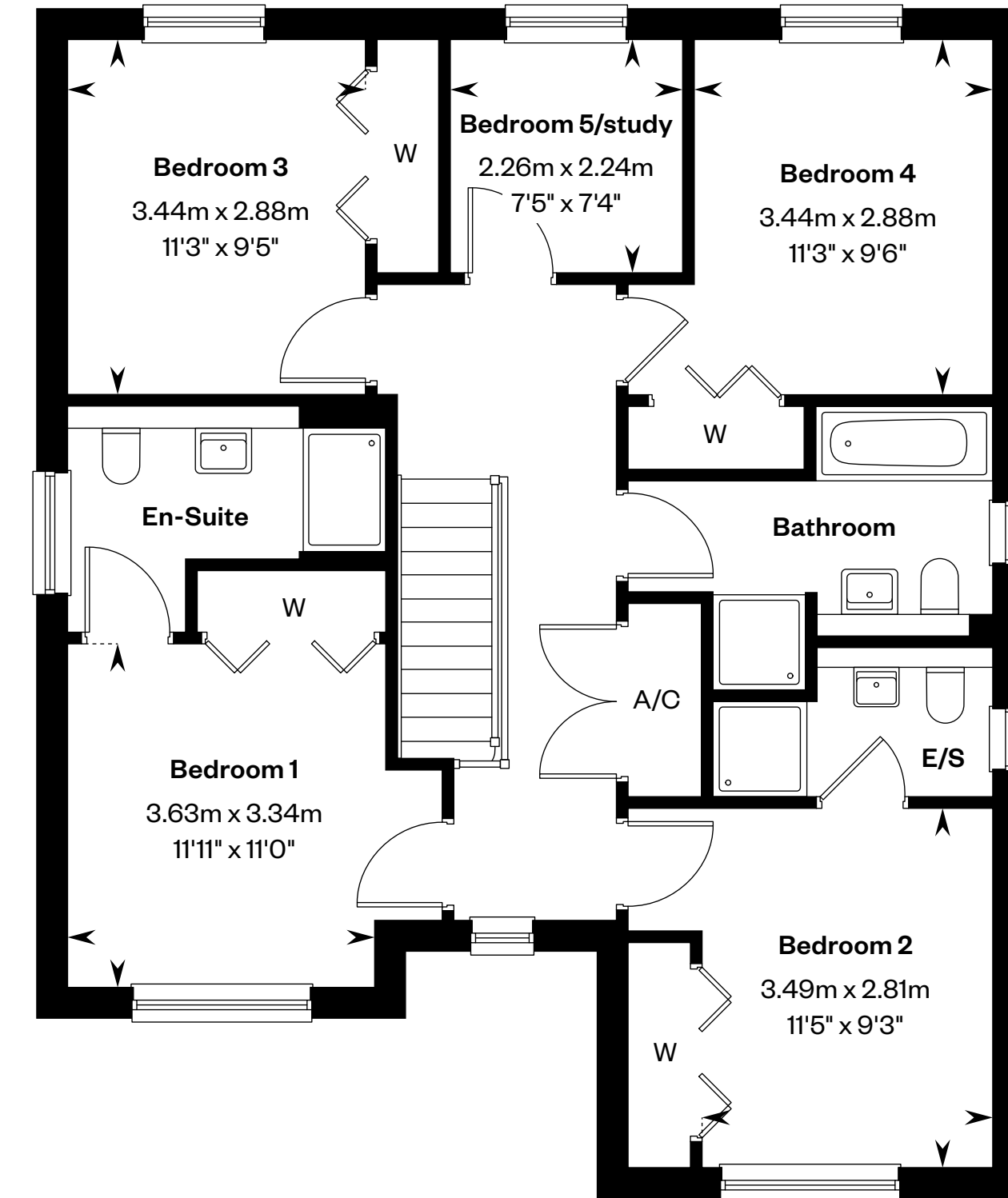
Plots 17, 22, 75 & 76 – handed



This is a Predicted Energy Assessment for properties that are incomplete. Once the property is completed, this rating will be updated and an official Energy Performance Certificate will be created for the property.



Ground floor



First floor

Please ask your Sales Consultant for further details. St: Store cupboard. W: Wardrobe.

IMPORTANT NOTICE TO CUSTOMERS: The Consumer Protection from Unfair Trading Regulations 2008. Cala Homes (North) Limited operates a policy of continual product development and the specifications outlined in this brochure are indicative only. The computer generated images and photographs do not necessarily represent the actual finishings/elevation or treatments, landscaping, furnishings and fittings at this development. Information contained is accurate at date of publication on 22.08.24. See the main brochure for the full Consumer Protection statement.