



# The Ripton

3 bedroom semi-detached  
and terraced home

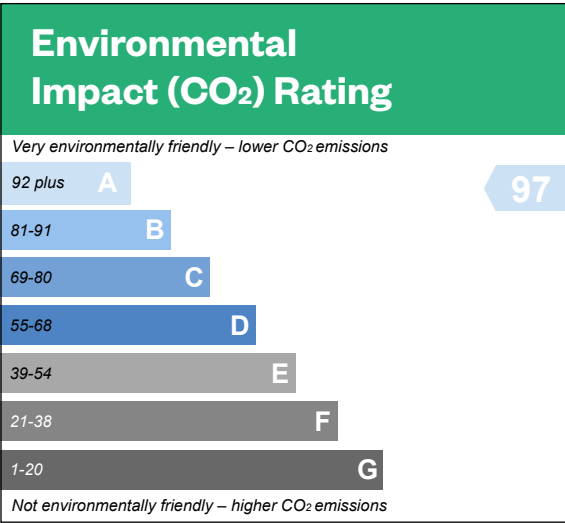
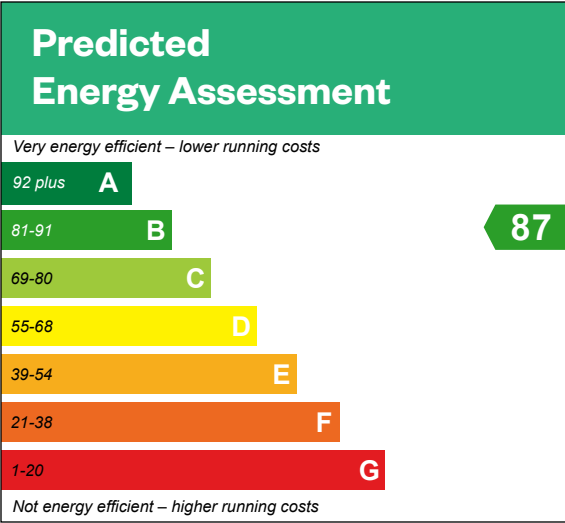


# The Ripton

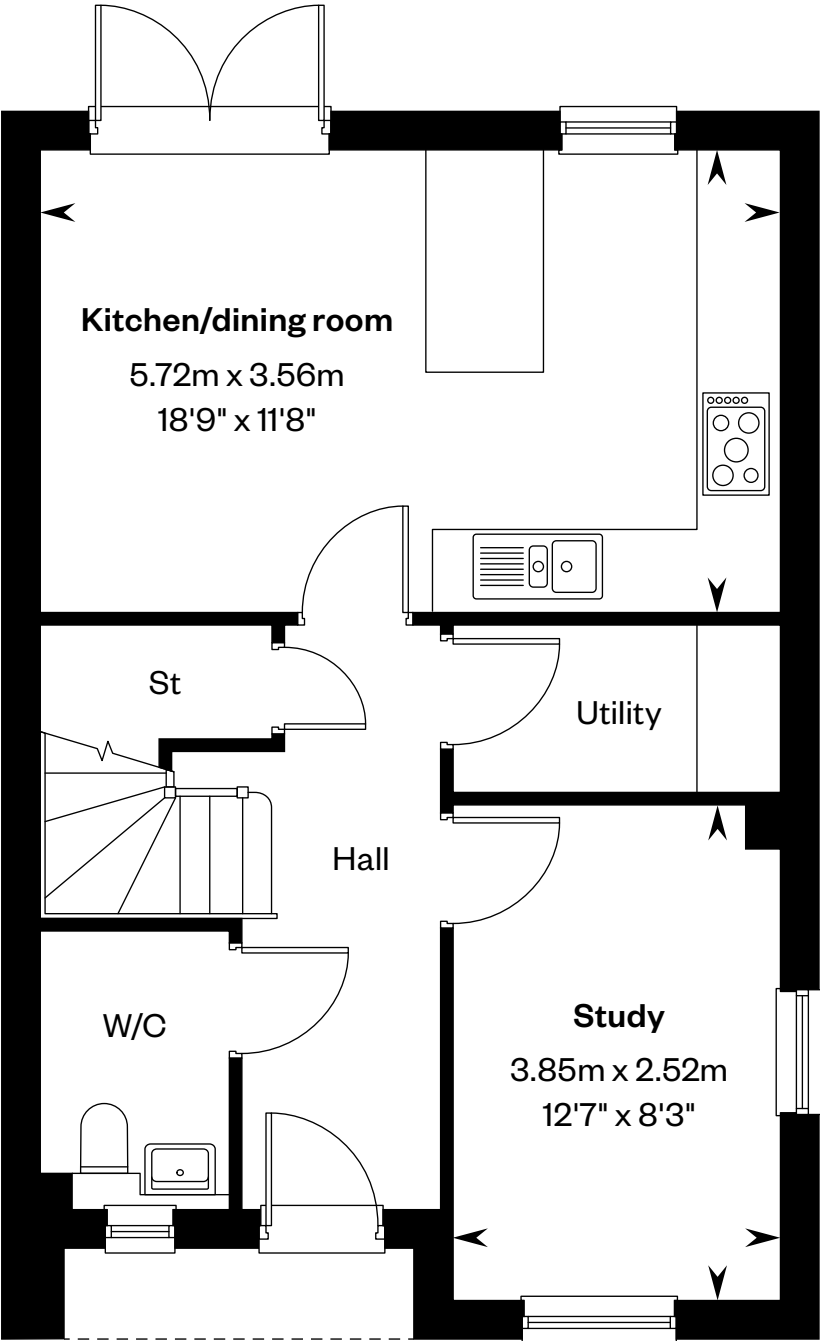
## 3 bedroom semi-detached and terraced home

Plots 142, 143, 190, 191, 192 & 193 – as shown

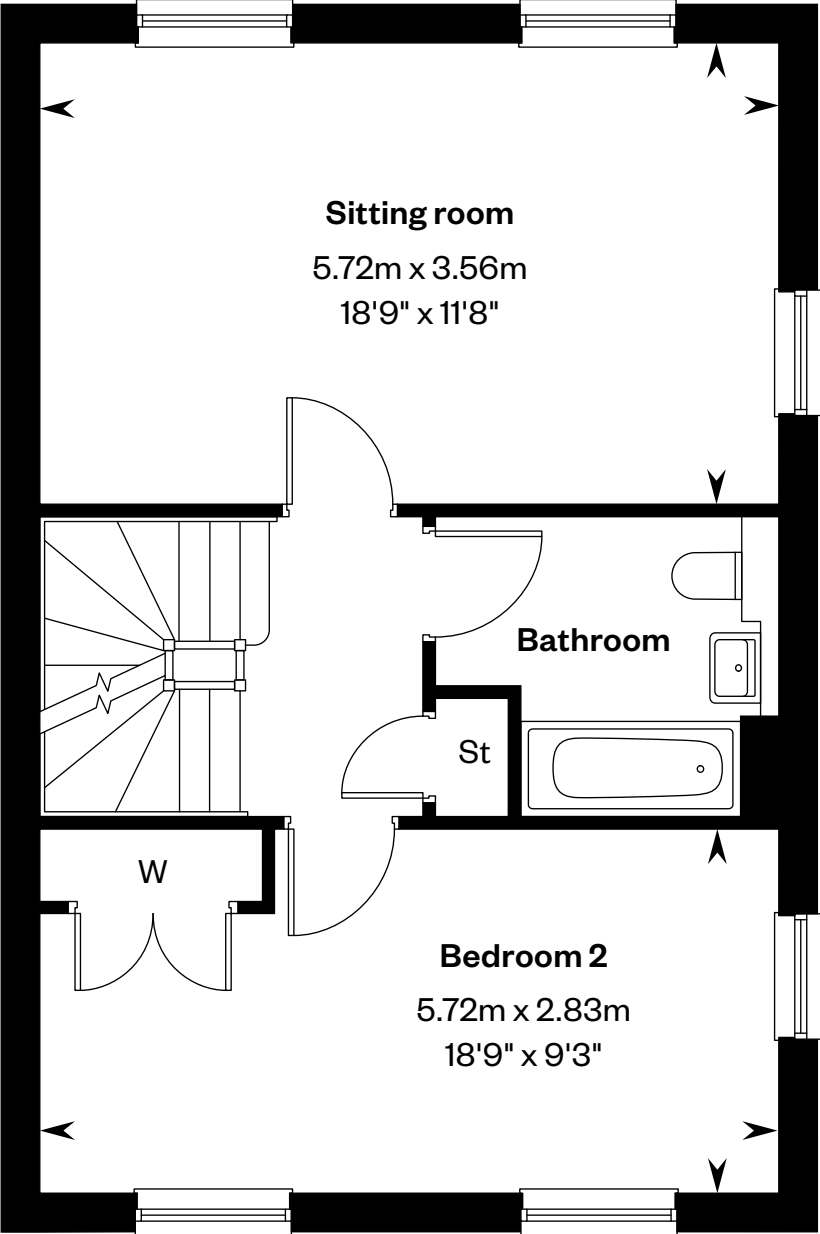
Plots 161, 162, 163, 164, 171, 172, 173, 174, 180, 181, 182 & 183 – handed



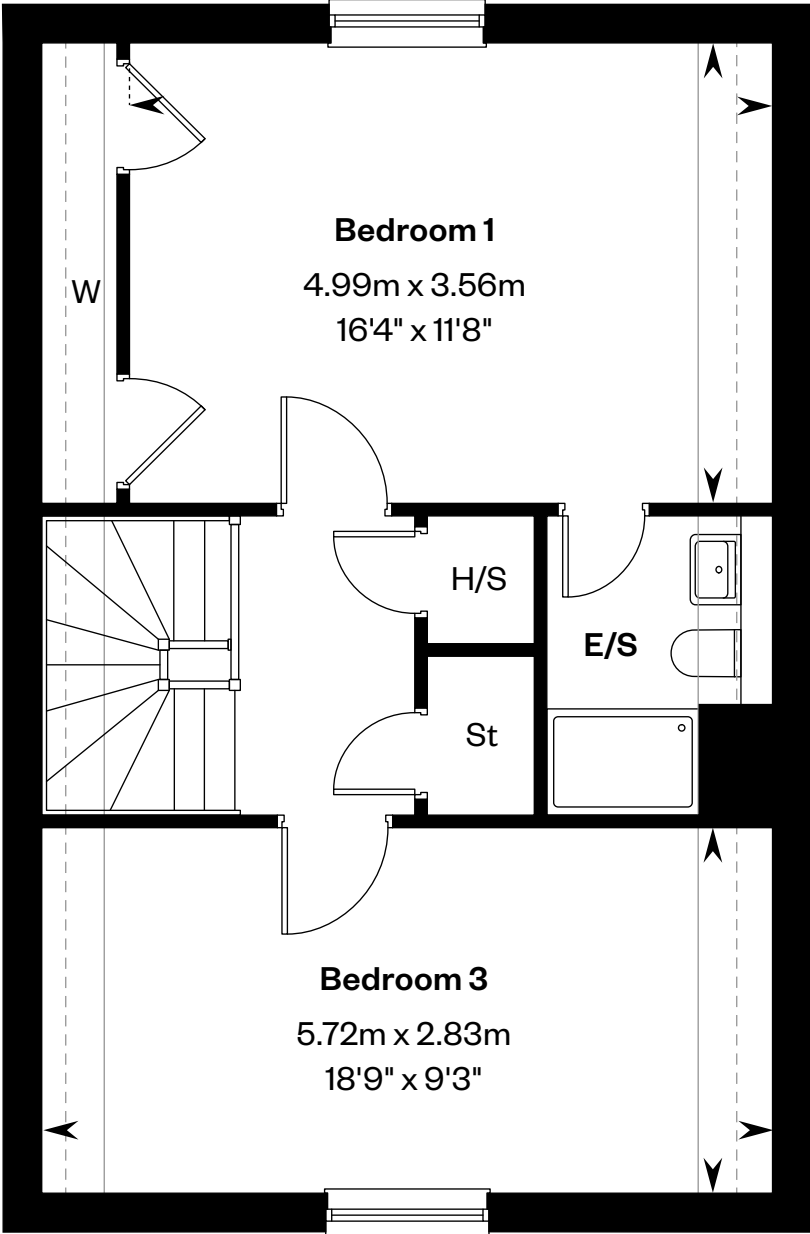
This is a Predicted Energy Assessment for properties that are incomplete. Once the property is completed, this rating will be updated and an official Energy Performance certificate will be created for the property.



Ground floor



First floor



Second floor

\*Window to plot 143 only. Please ask your Sales Consultant for further details.

H/S: Heating system cupboard. E/S: En-Suite. St: Store cupboard. W: Wardrobe. - - - -: Dotted lines denote reduced head height. — : Solid lines denote full head height.

IMPORTANT NOTICE TO CUSTOMERS: The Consumer Protection from Unfair Trading Regulations 2008. Cala Homes (North Home Counties) Limited operates a policy of continual product development and the specifications outlined in this brochure are indicative only. The computer generated images and photographs do not necessarily represent the actual finishings/ elevation or treatments, landscaping, furnishings and fittings at this development. Information contained is accurate at date of publication on 25.04.25. See the main brochure for the full Consumer Protection statement.