



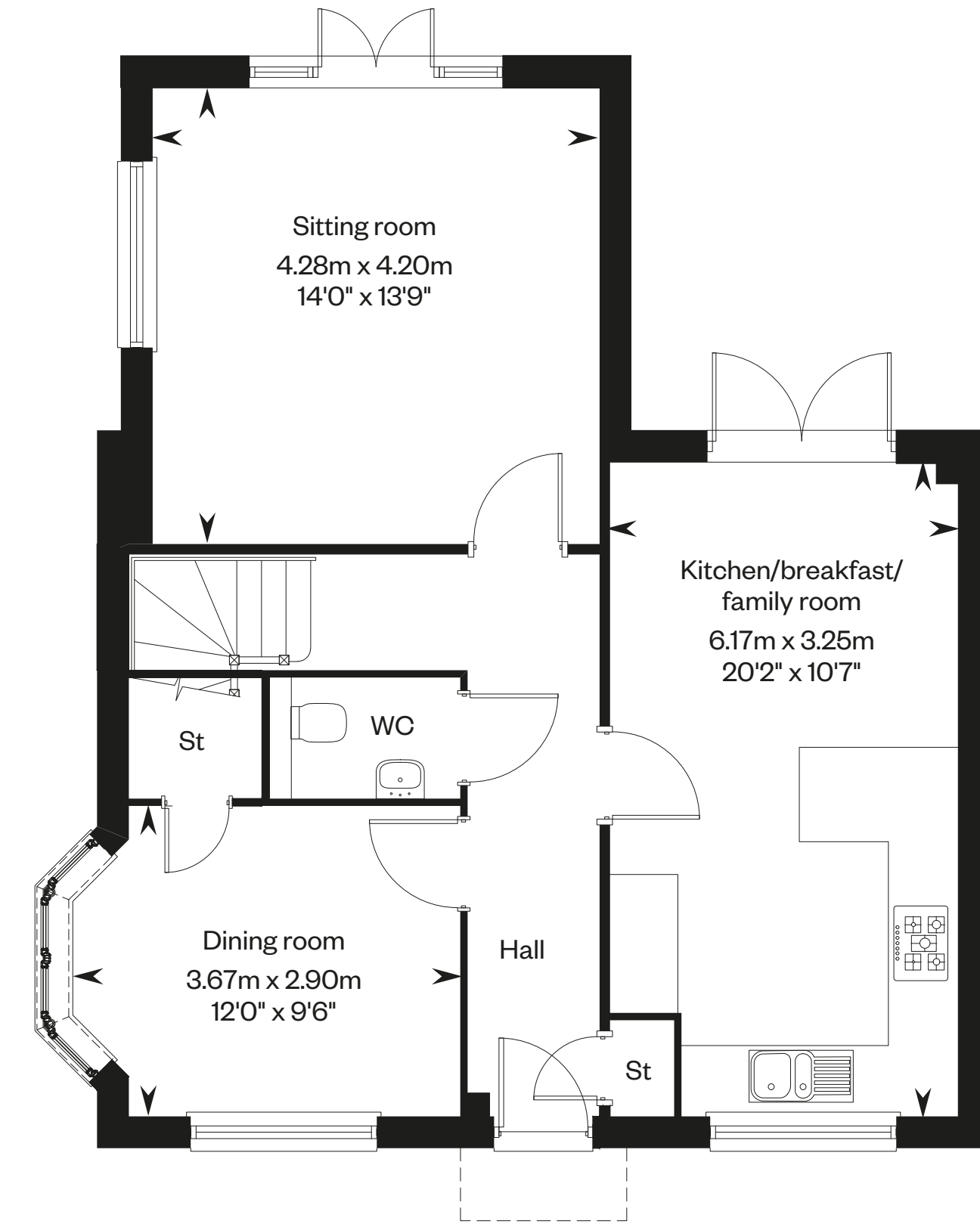
# The Oatvale

4 bedroom detached home with study and garage

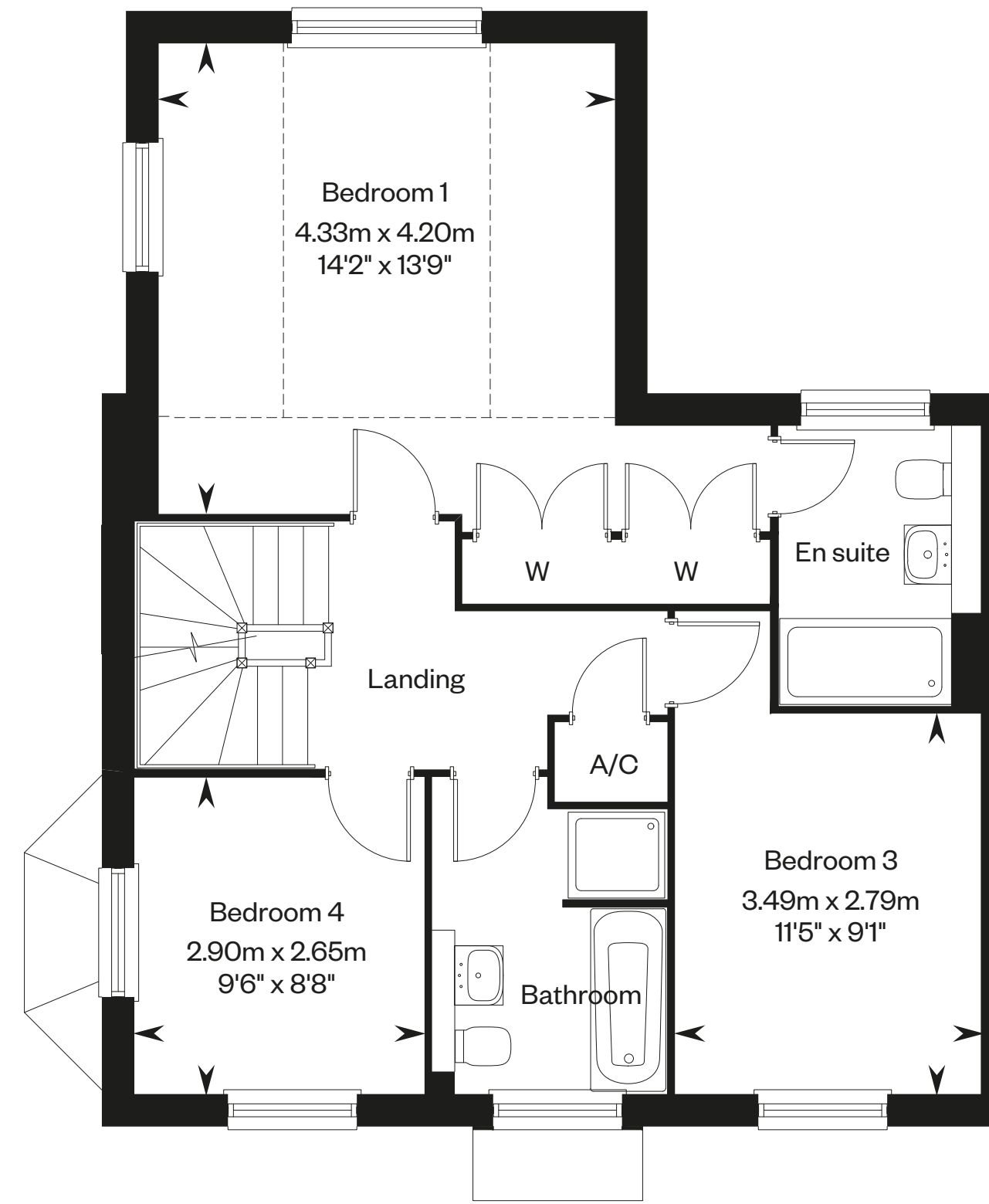


# The Oatvale

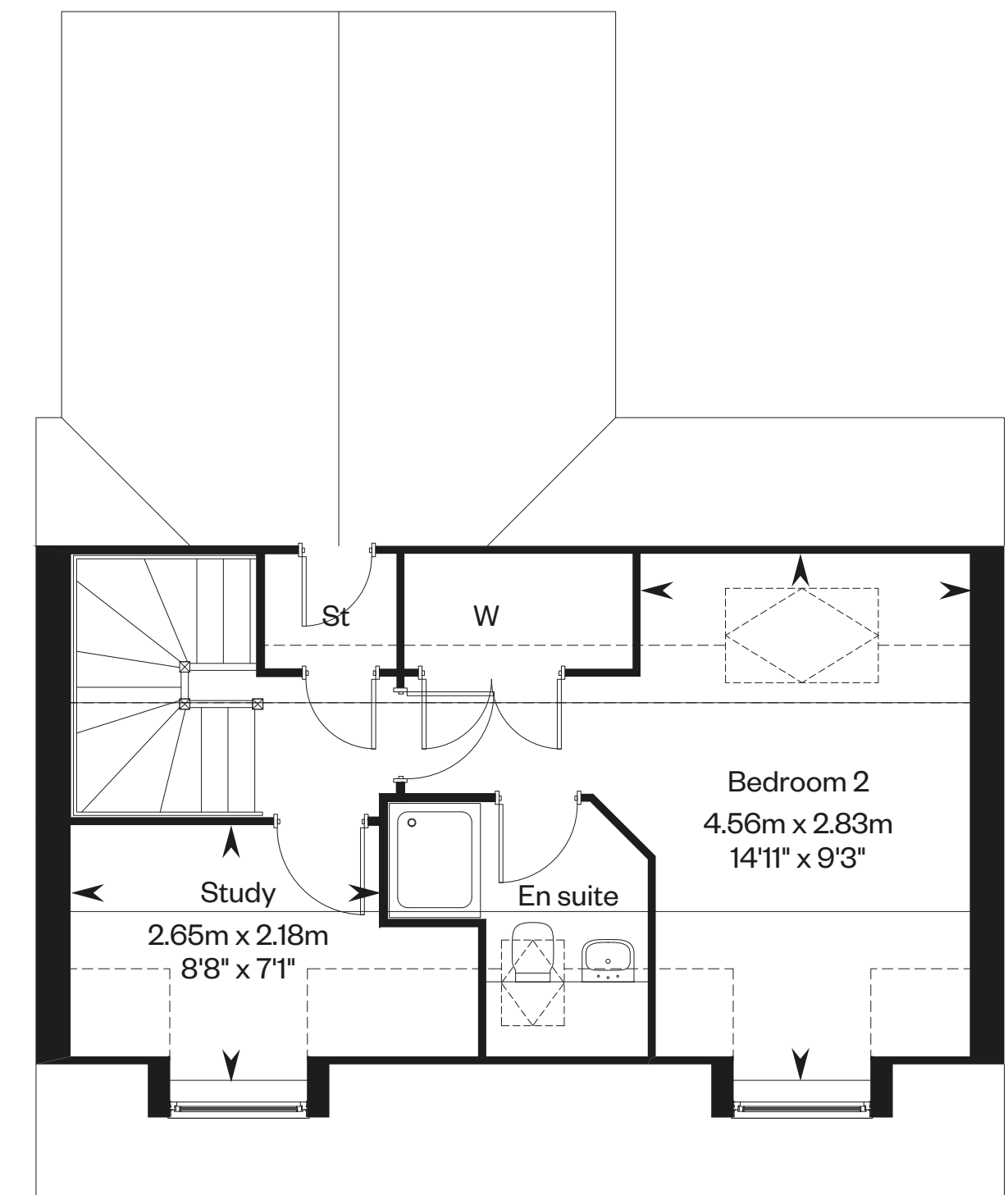
Plots 63 & 137 – as shown  
Plots 67 & 96 – handed



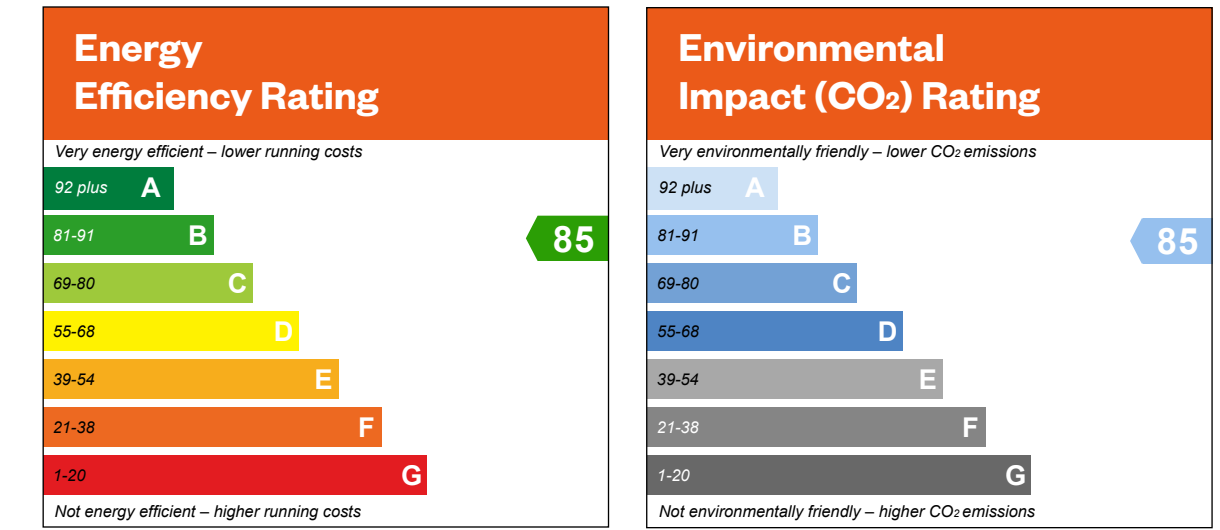
Ground floor



First floor



Second floor



Solid thin line denotes extent of full height ceiling. Dotted lines denote reduced head height or structure above and approximate position of 2400mm ceiling height. Please ask your Sales Consultant for further details. A/C: Airing cupboard. St: Store cupboard. W: Wardrobe. ☐: Roof light.

**IMPORTANT NOTICE TO CUSTOMERS:** The Consumer Protection from Unfair Trading Regulations 2008. Cala Homes (North Home Counties) Limited operates a policy of continual product development and the specifications outlined in this brochure are indicative only. The computer generated images and photographs do not necessarily represent the actual finishings/ elevation or treatments, landscaping, furnishings and fittings at this development. Information contained is accurate at date of publication on 06.04.2023. See the main brochure for the full Consumer Protection statement. This is a Predicted Energy Assessment for properties that are incomplete. Once the property is completed, this rating will be updated and an official Energy Performance Certificate will be created for the property.