

# The Avon

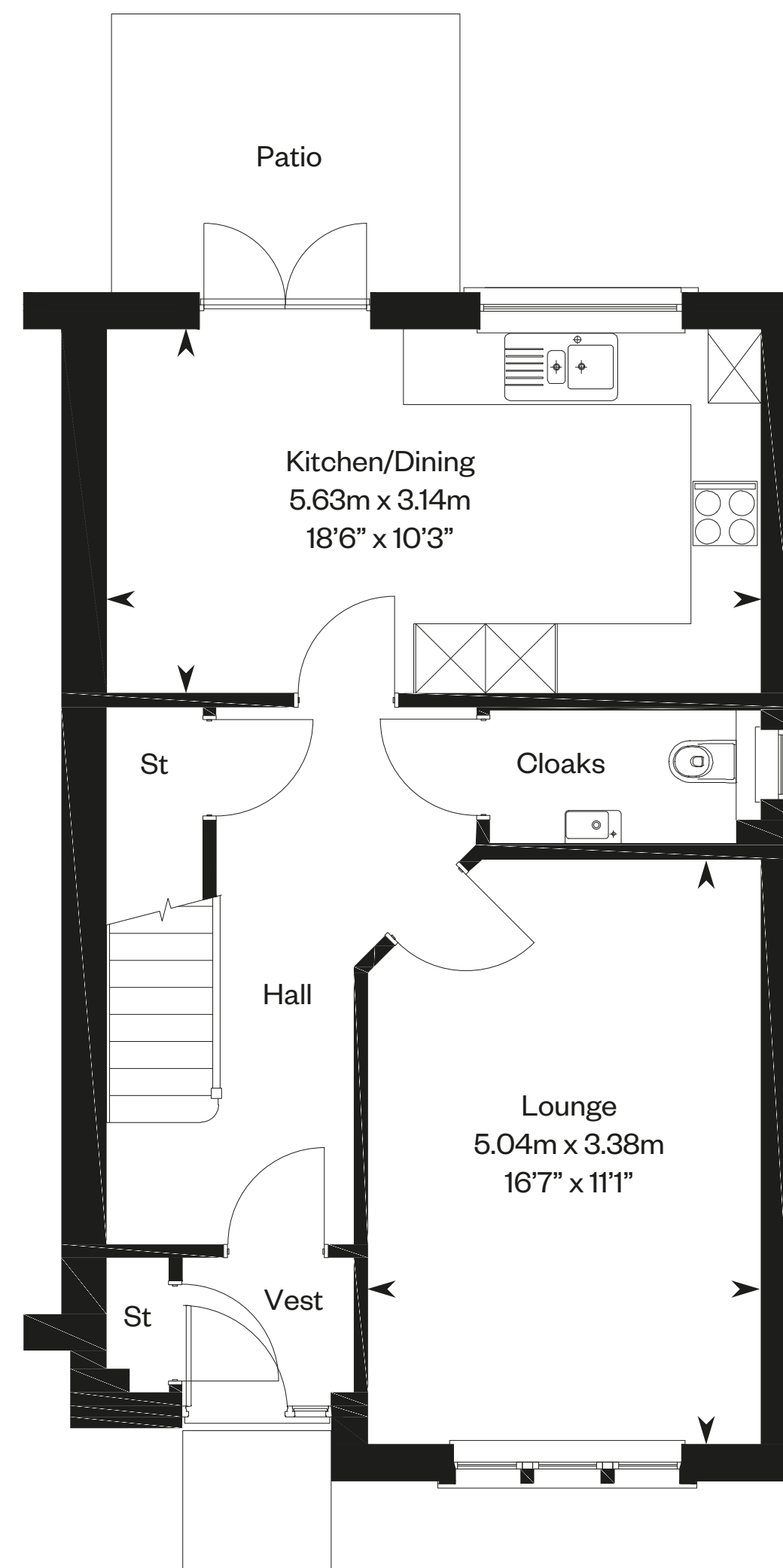
3 bedroom terraced home



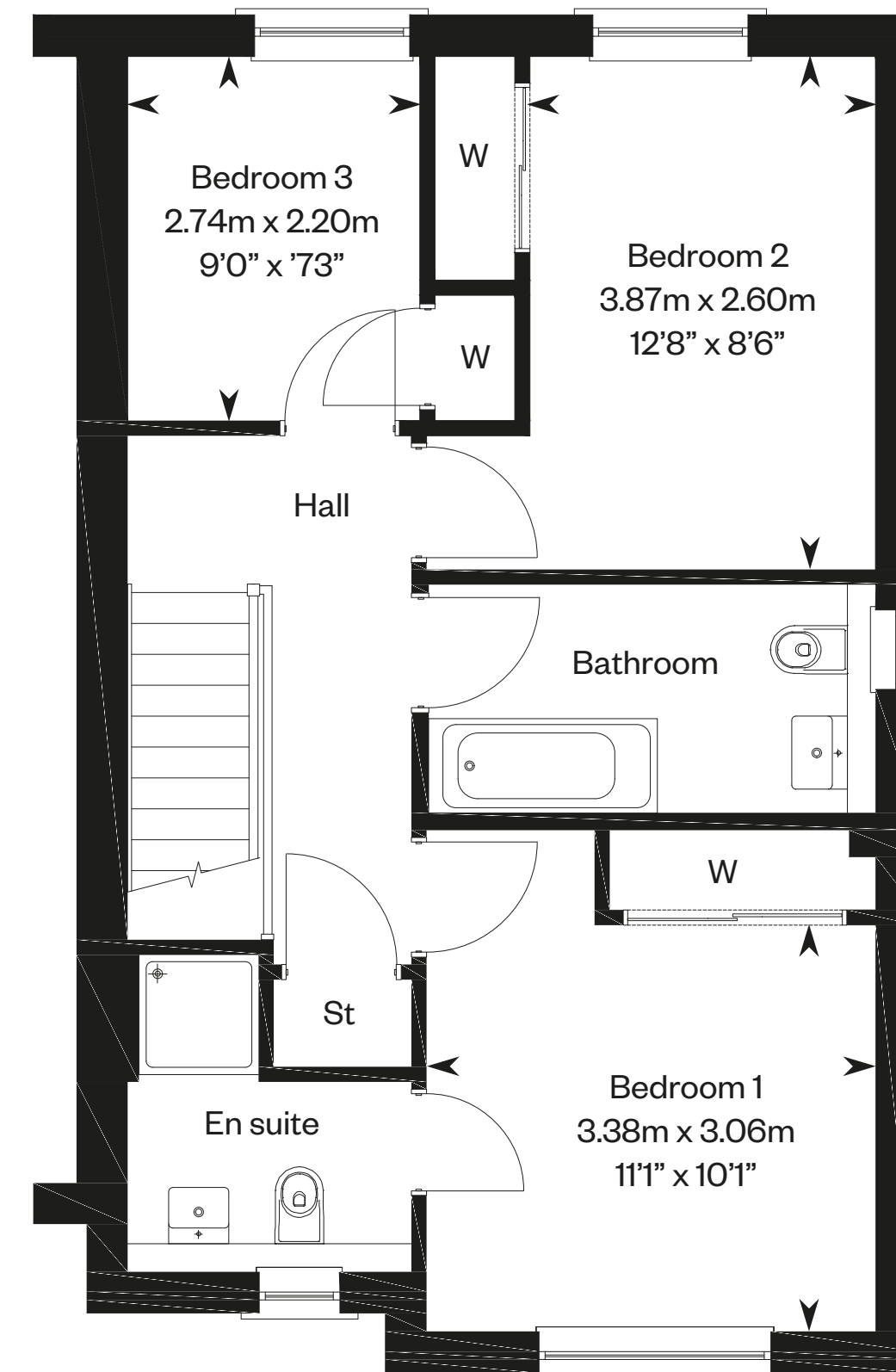
Computer Generated Image - A typical Avon

# The Avon

Plots 10, 11, 12 – as shown



Ground floor



First floor

\*Cloak & Bathroom windows to plot 10 only.

Plan shows an end terrace Avon, please note there may be a slight difference between end and mid terraced homes. Please ask your Sales Consultant for further details. ST: Store cupboard. W: Wardrobe.

IMPORTANT NOTICE TO CUSTOMERS: The Consumer Protection from Unfair Trading Regulations 2008. Cala Homes (East) Limited operates a policy of continual product development and the specifications outlined in this brochure are indicative only. The computer generated images and photographs do not necessarily represent the actual finishings/elevation or treatments, landscaping, furnishings and fittings at this development. Information contained is accurate at date of publication on 06.10.22. See the main brochure for the full Consumer Protection statement.

# The Balmaha

4 bedroom semi-detached home

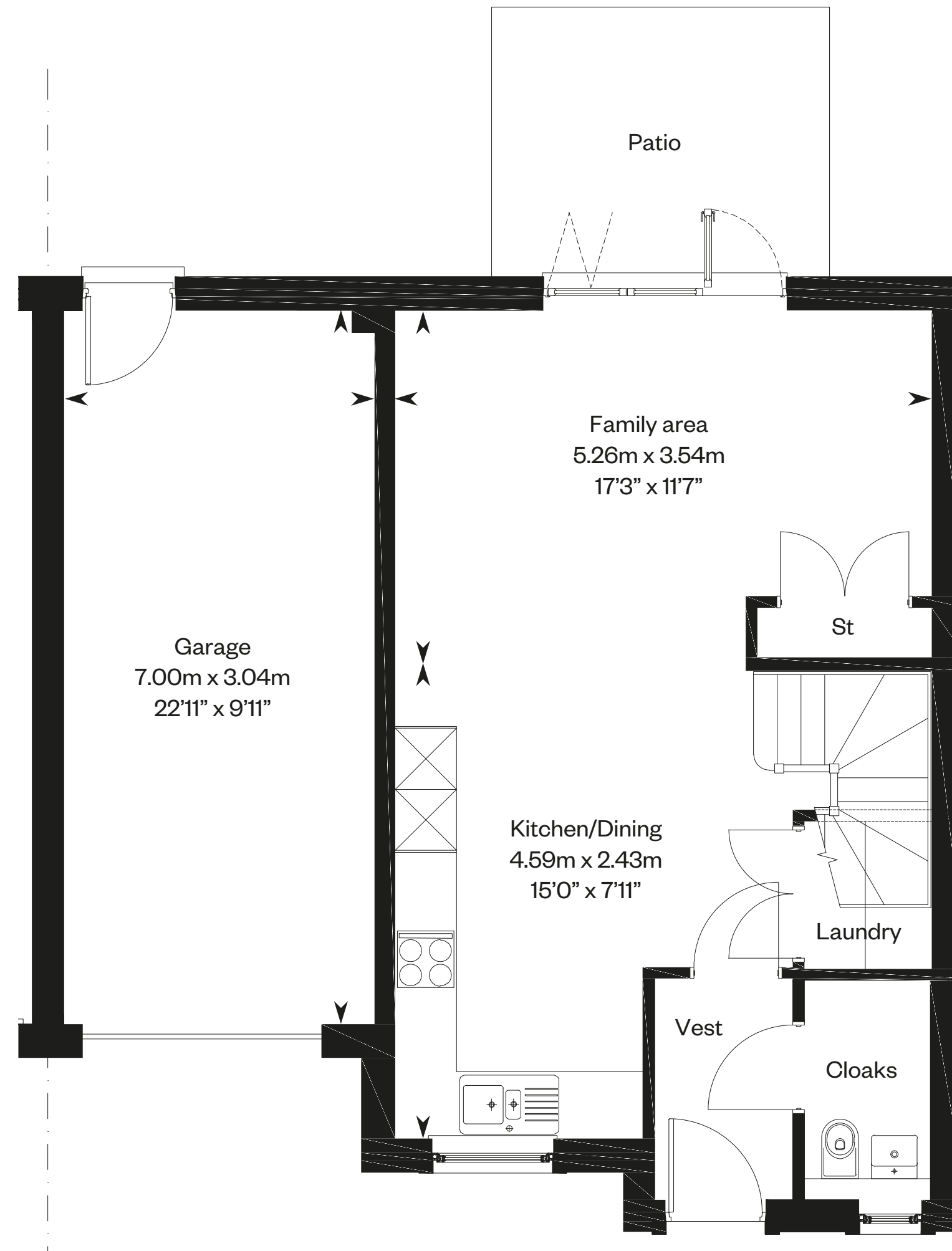


Computer Generated Image - A typical Balmaha

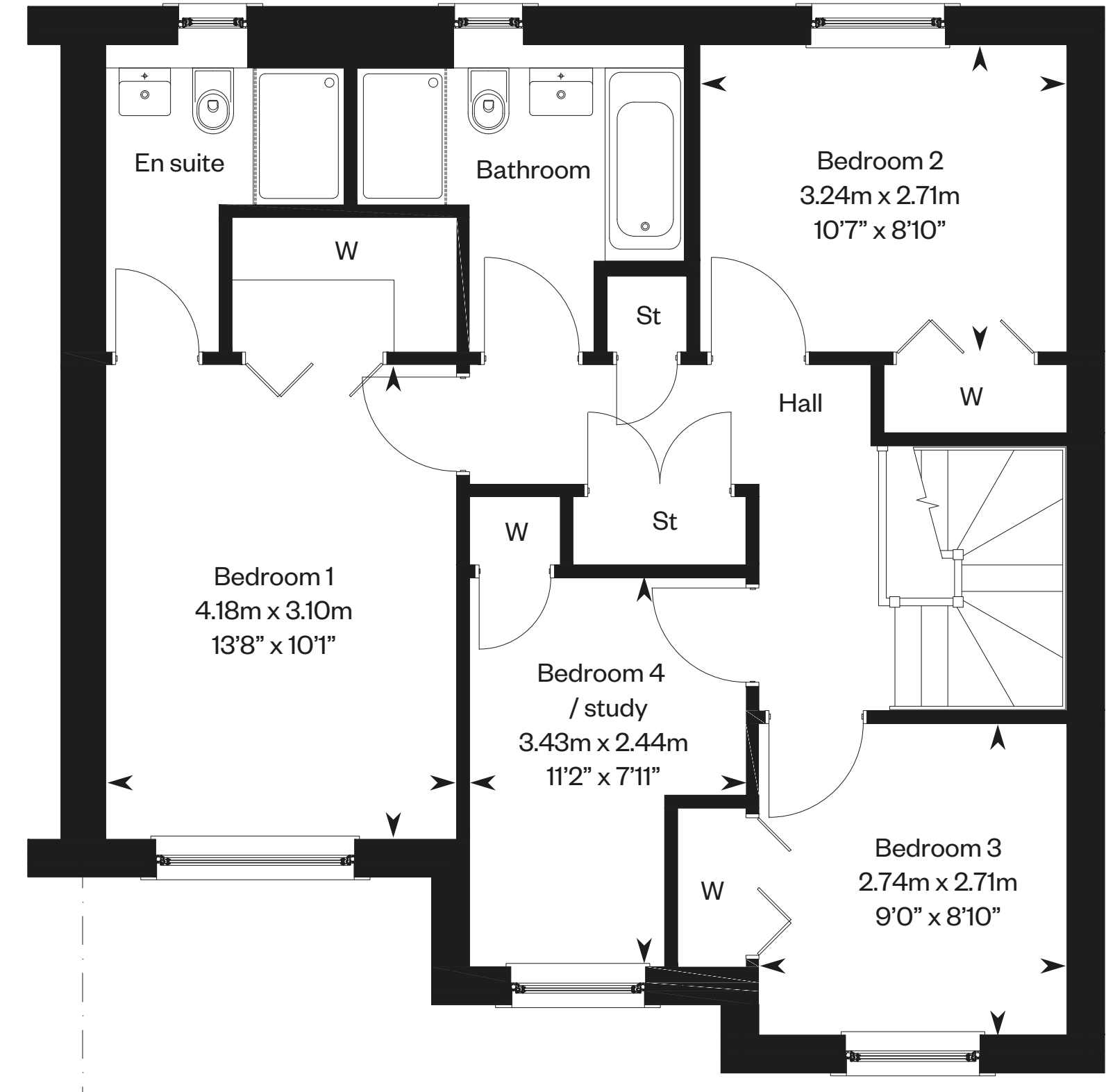
# The Balmaha

Plots 8, 101, 103, 113, 117 – as shown

Plots 9, 100, 102, 112, 116 – handed



Ground floor



First floor

Please ask your Sales Consultant for further details. ST: Store cupboard. W: Wardrobe.

IMPORTANT NOTICE TO CUSTOMERS: The Consumer Protection from Unfair Trading Regulations 2008. Cala Homes (East) Limited operates a policy of continual product development and the specifications outlined in this brochure are indicative only. The computer generated images and photographs do not necessarily represent the actual finishings/elevation or treatments, landscaping, furnishings and fittings at this development. Information contained is accurate at date of publication on 06.10.22. See the main brochure for the full Consumer Protection statement.

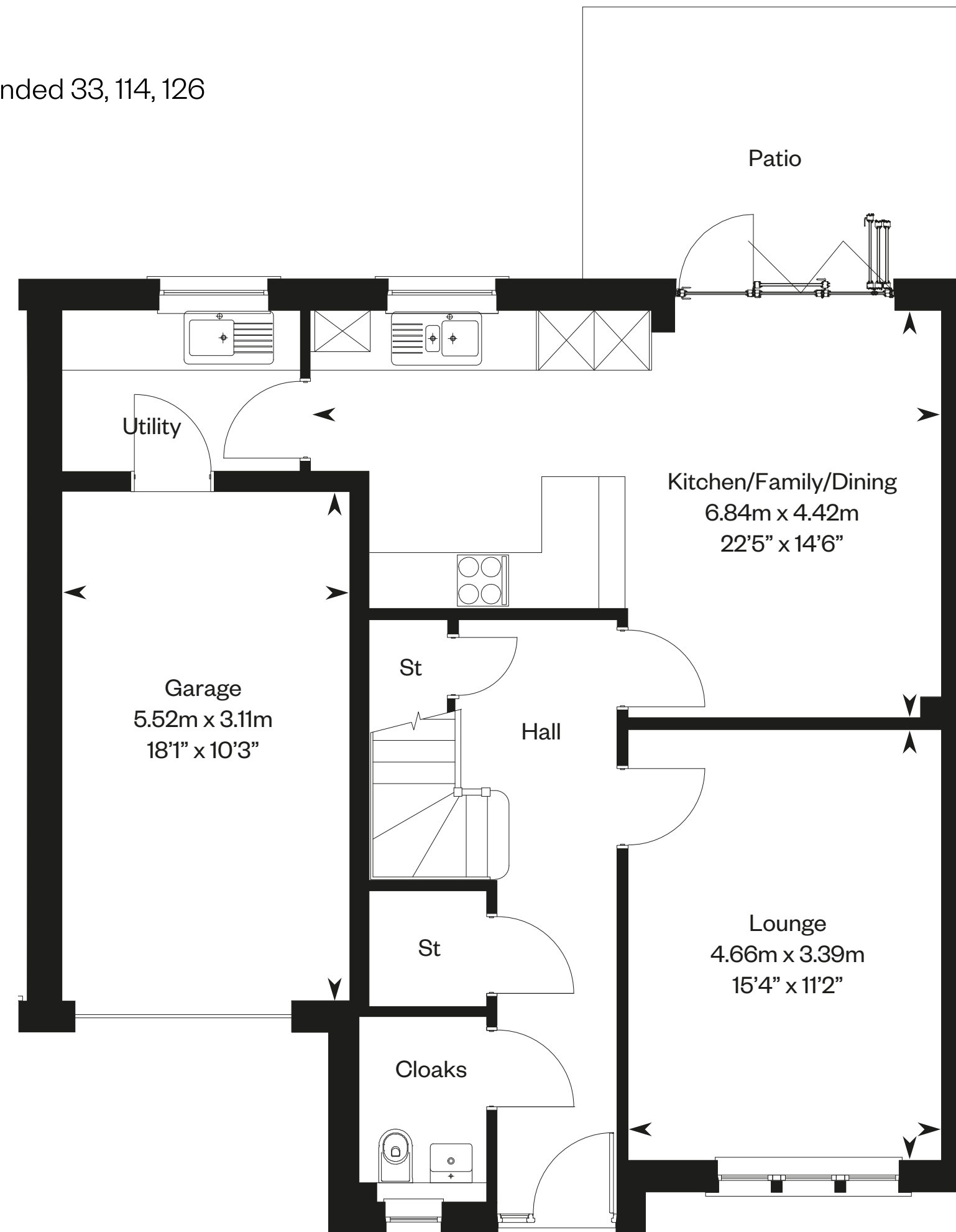
# The Bryce

4 bedroom semi-detached

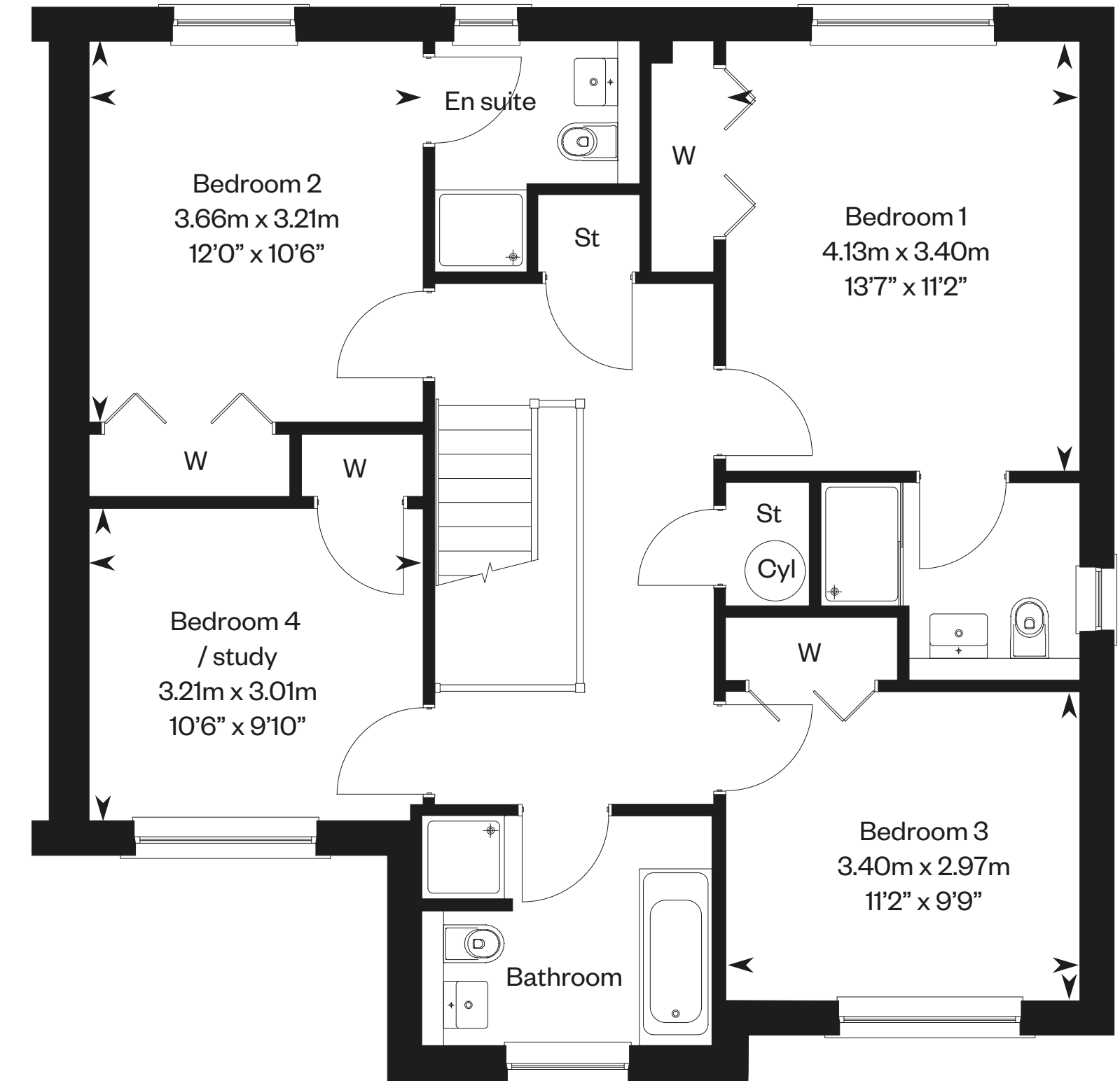


# The Bryce

Semi detached plots. As shown 32, 115, 127 – Handed 33, 114, 126



Ground floor



First floor

Please ask your Sales Consultant for further details. ST: Store cupboard. W: Wardrobe.

IMPORTANT NOTICE TO CUSTOMERS: The Consumer Protection from Unfair Trading Regulations 2008. Cala Homes (East) Limited operates a policy of continual product development and the specifications outlined in this brochure are indicative only. The computer generated images and photographs do not necessarily represent the actual finishings/elevation or treatments, landscaping, furnishings and fittings at this development. Information contained is accurate at date of publication on 06.10.22. See the main brochure for the full Consumer Protection statement.

# The Bryce

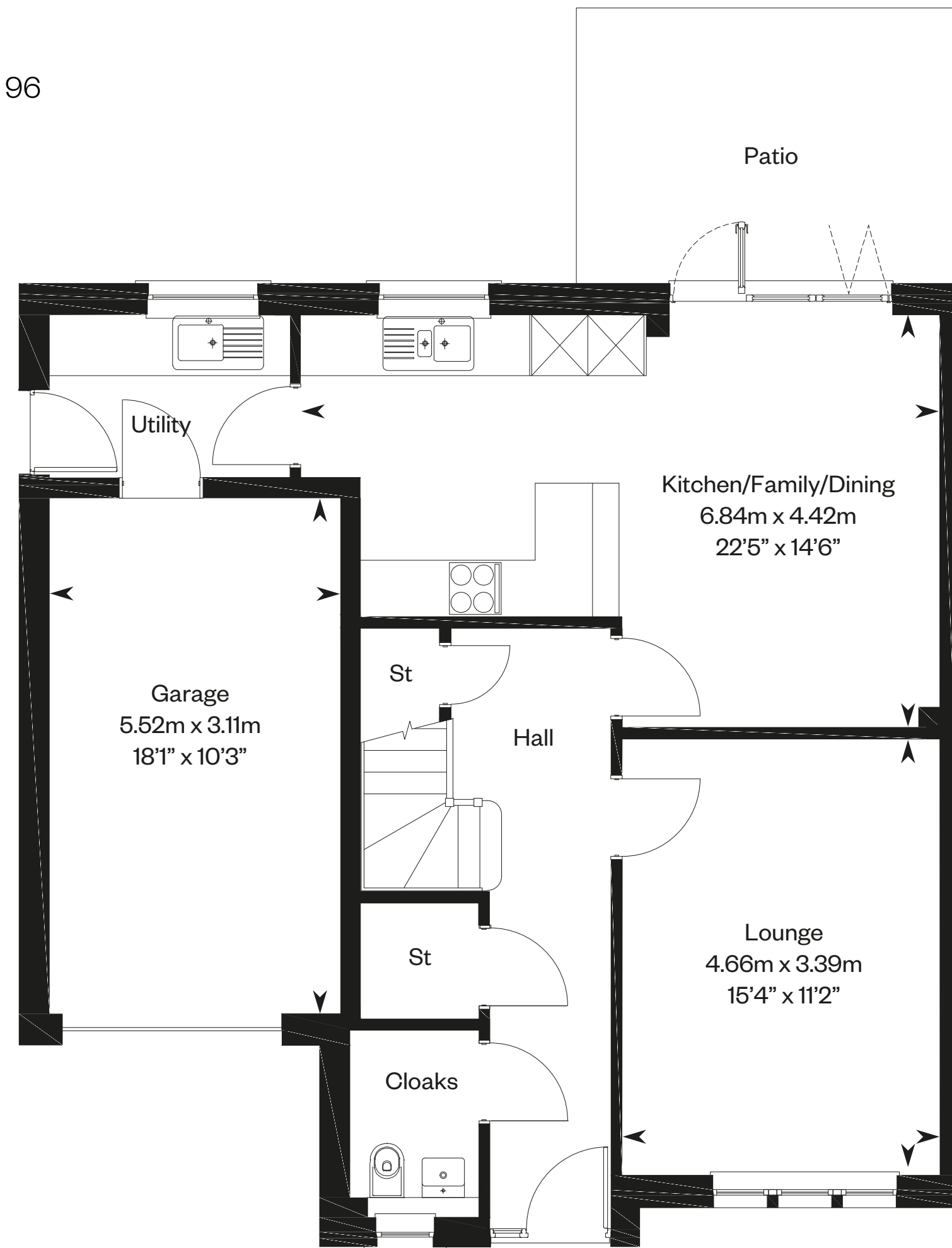
4 bedroom detached



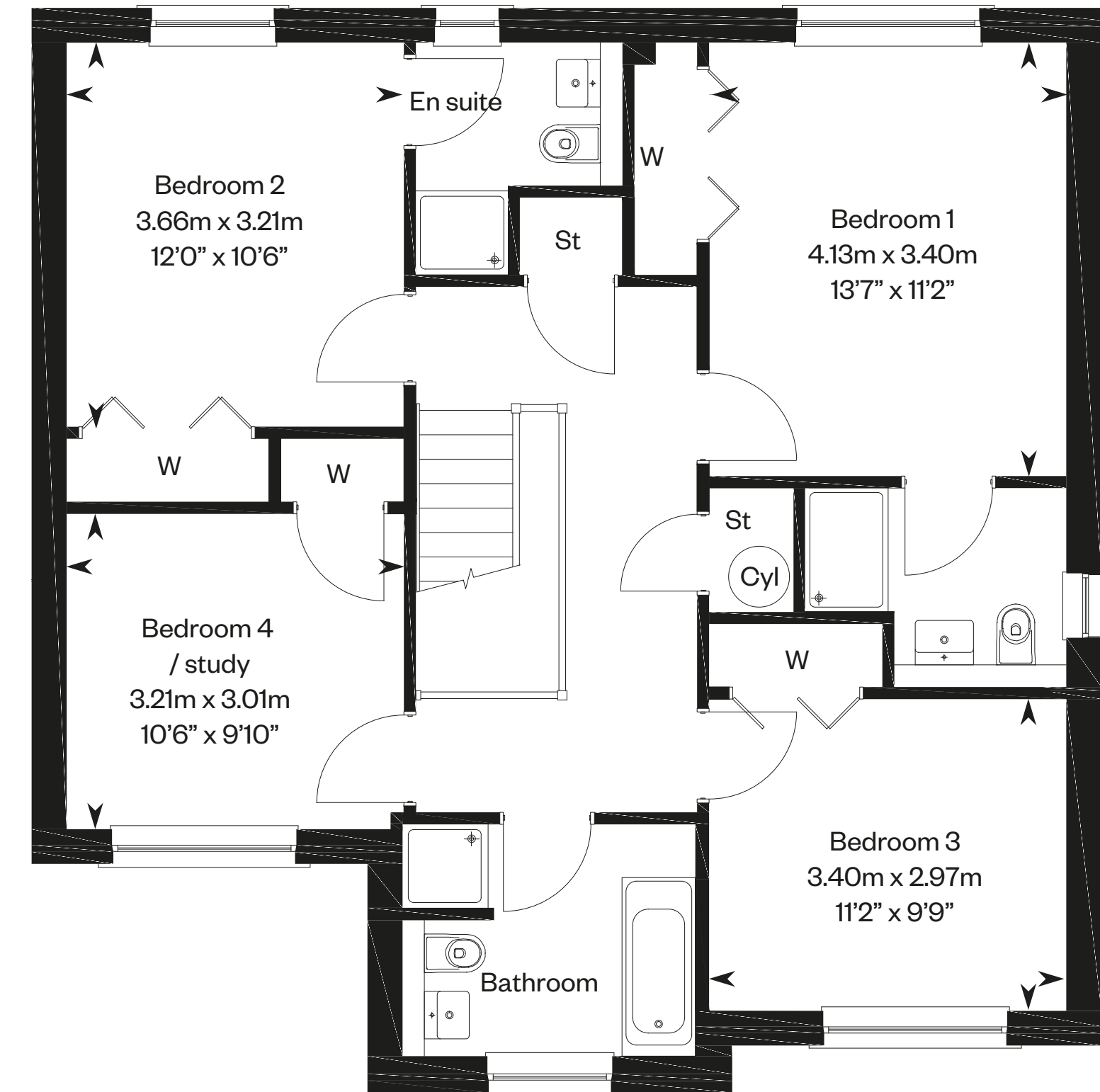
Computer Generated Image - A typical Bryce

# The Bryce

Detached plots. As shown 27, 97, 131 – Handed 4, 96



Ground floor



First floor

Please ask your Sales Consultant for further details. ST: Store cupboard. W: Wardrobe.

IMPORTANT NOTICE TO CUSTOMERS: The Consumer Protection from Unfair Trading Regulations 2008. Cala Homes (East) Limited operates a policy of continual product development and the specifications outlined in this brochure are indicative only. The computer generated images and photographs do not necessarily represent the actual finishings/elevation or treatments, landscaping, furnishings and fittings at this development. Information contained is accurate at date of publication on 06.10.22. See the main brochure for the full Consumer Protection statement.



# The Cairn

4 bedroom detached home

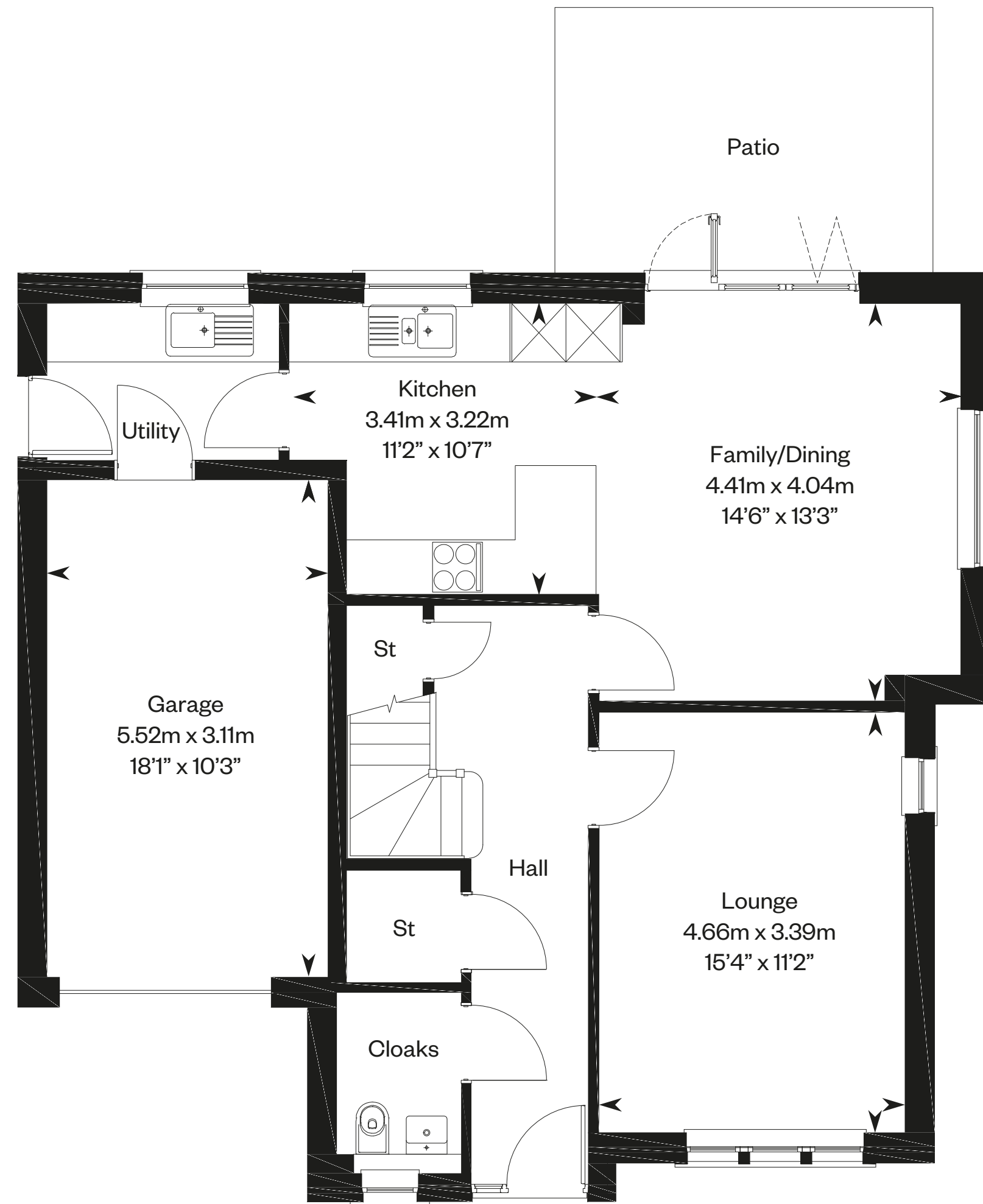


# The Cairn

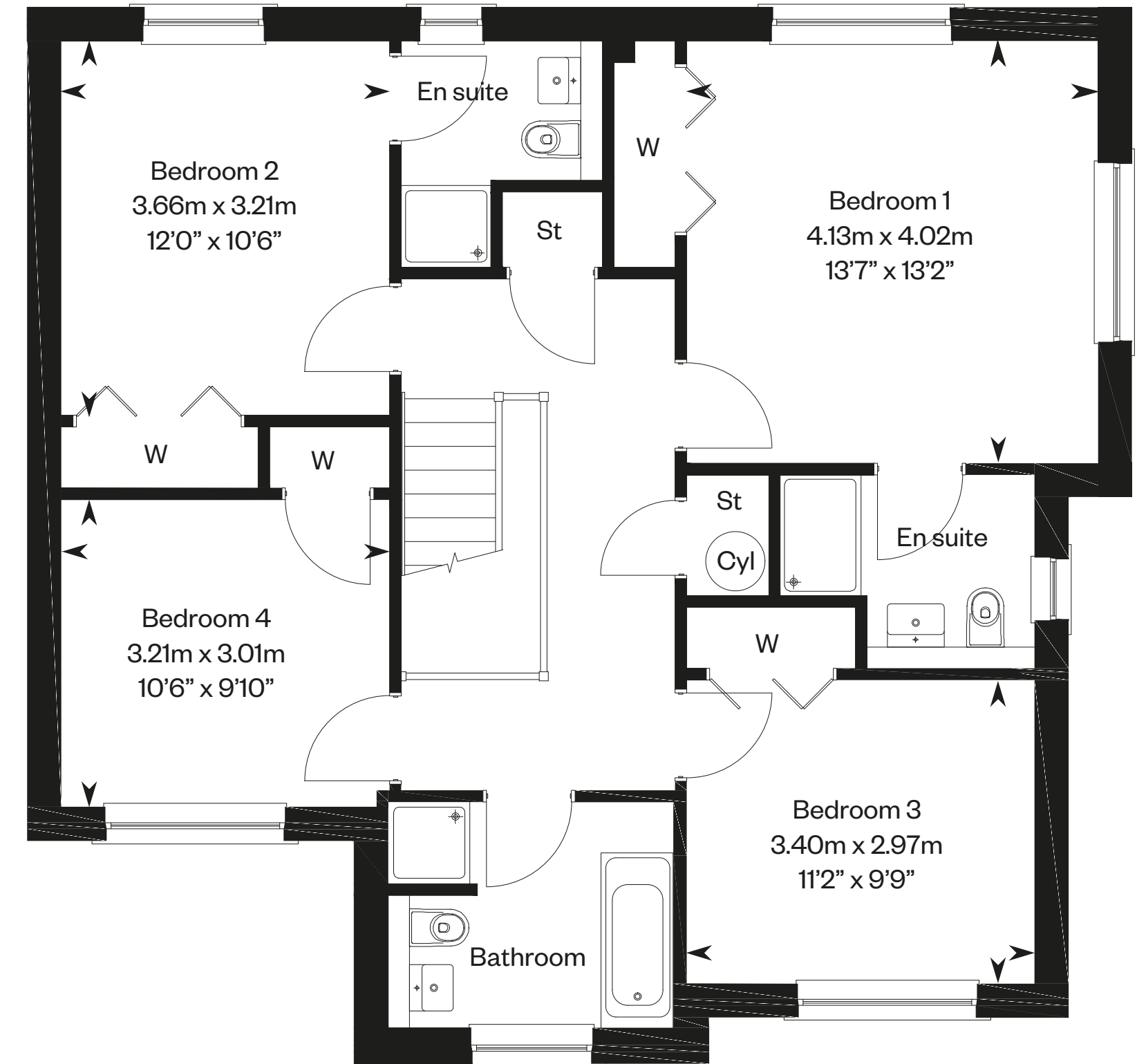
Plots 104, 118, 132 – as shown

Plots 25, 99, 111, 124 – handed

Please note:  
Plots 25 & 124 have a different window arrangement.



Ground floor



First floor

Please consult a Sales Consultant for plot specific details. ST: Store cupboard. W: Wardrobe.

IMPORTANT NOTICE TO CUSTOMERS: The Consumer Protection from Unfair Trading Regulations 2008. Cala Homes (East) Limited operates a policy of continual product development and the specifications outlined in this brochure are indicative only. The computer generated images and photographs do not necessarily represent the actual finishings/elevation or treatments, landscaping, furnishings and fittings at this development. Information contained is accurate at date of publication on 06.10.22. See the main brochure for the full Consumer Protection statement.

# The Cleland

4 bedroom detached home

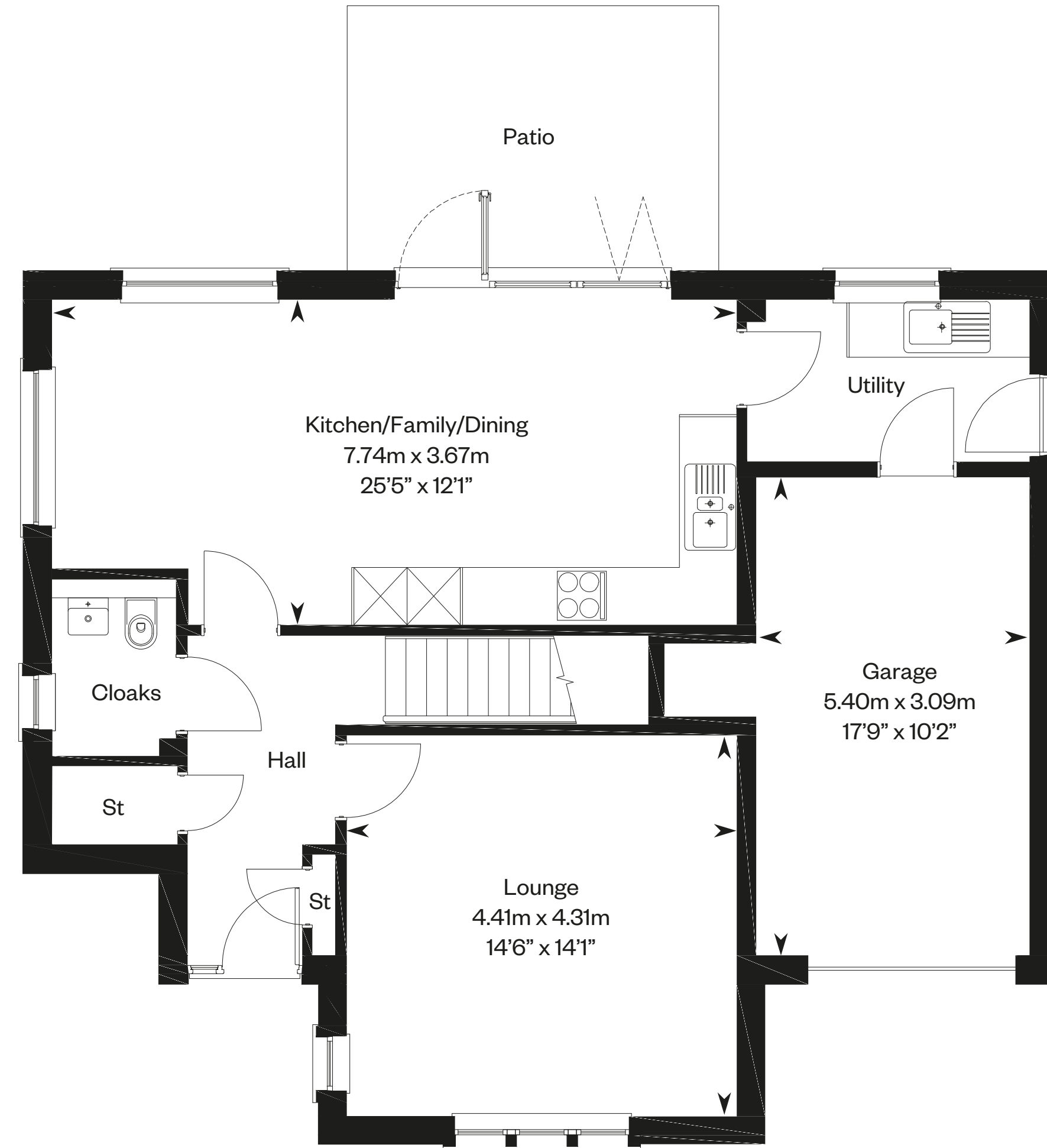


Computer Generated Image - A typical Cleland

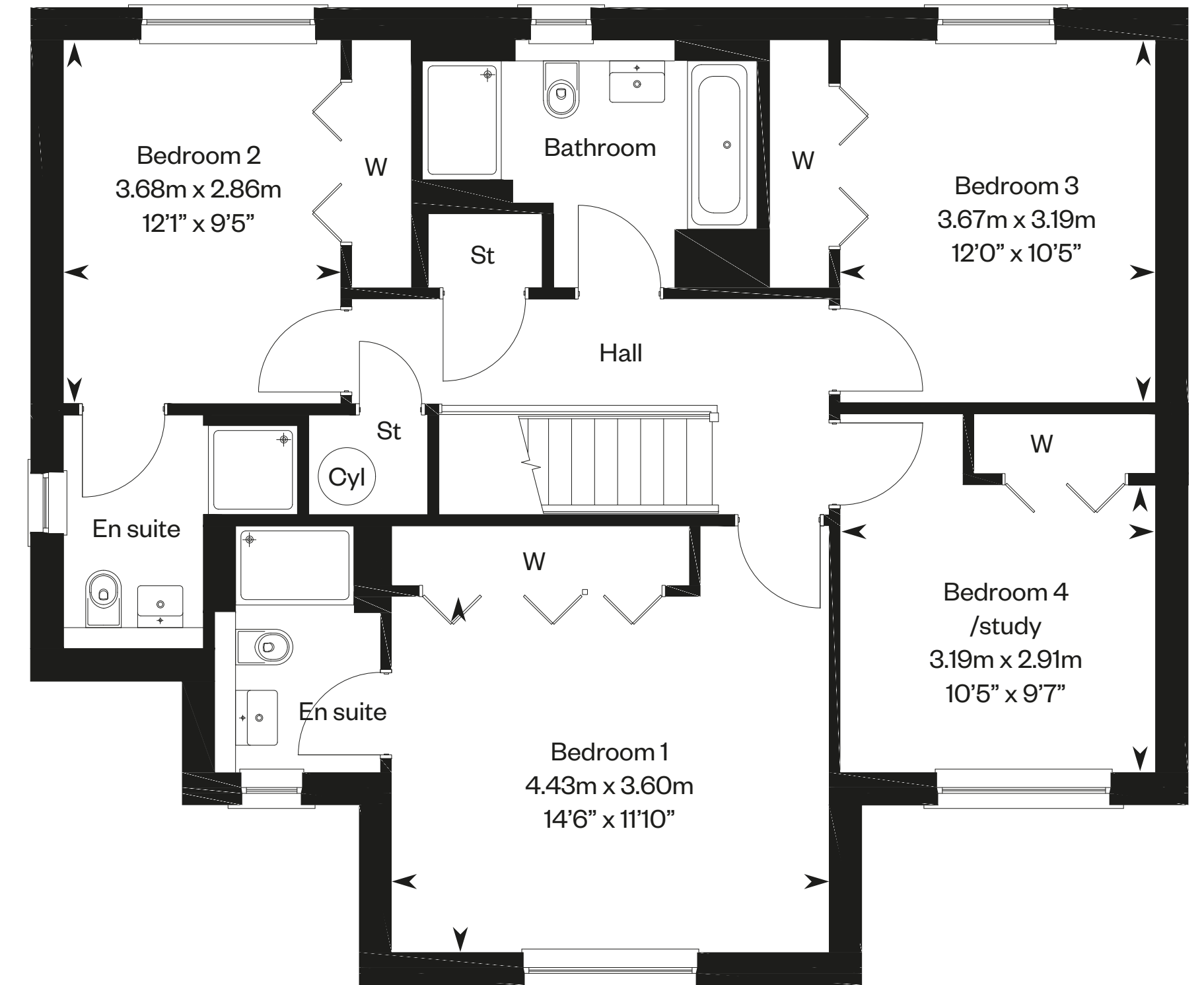
# The Cleland

Plots 1, 3, 39, 119 – as shown

Plots 29, 37, 95, 98 – handed



Ground floor



First floor

Please ask your Sales Consultant for further details. ST: Store cupboard. W: Wardrobe.

IMPORTANT NOTICE TO CUSTOMERS: The Consumer Protection from Unfair Trading Regulations 2008. Cala Homes (East) Limited operates a policy of continual product development and the specifications outlined in this brochure are indicative only. The computer generated images and photographs do not necessarily represent the actual finishings/elevation or treatments, landscaping, furnishings and fittings at this development. Information contained is accurate at date of publication on 06.10.22. See the main brochure for the full Consumer Protection statement.

# The Colville

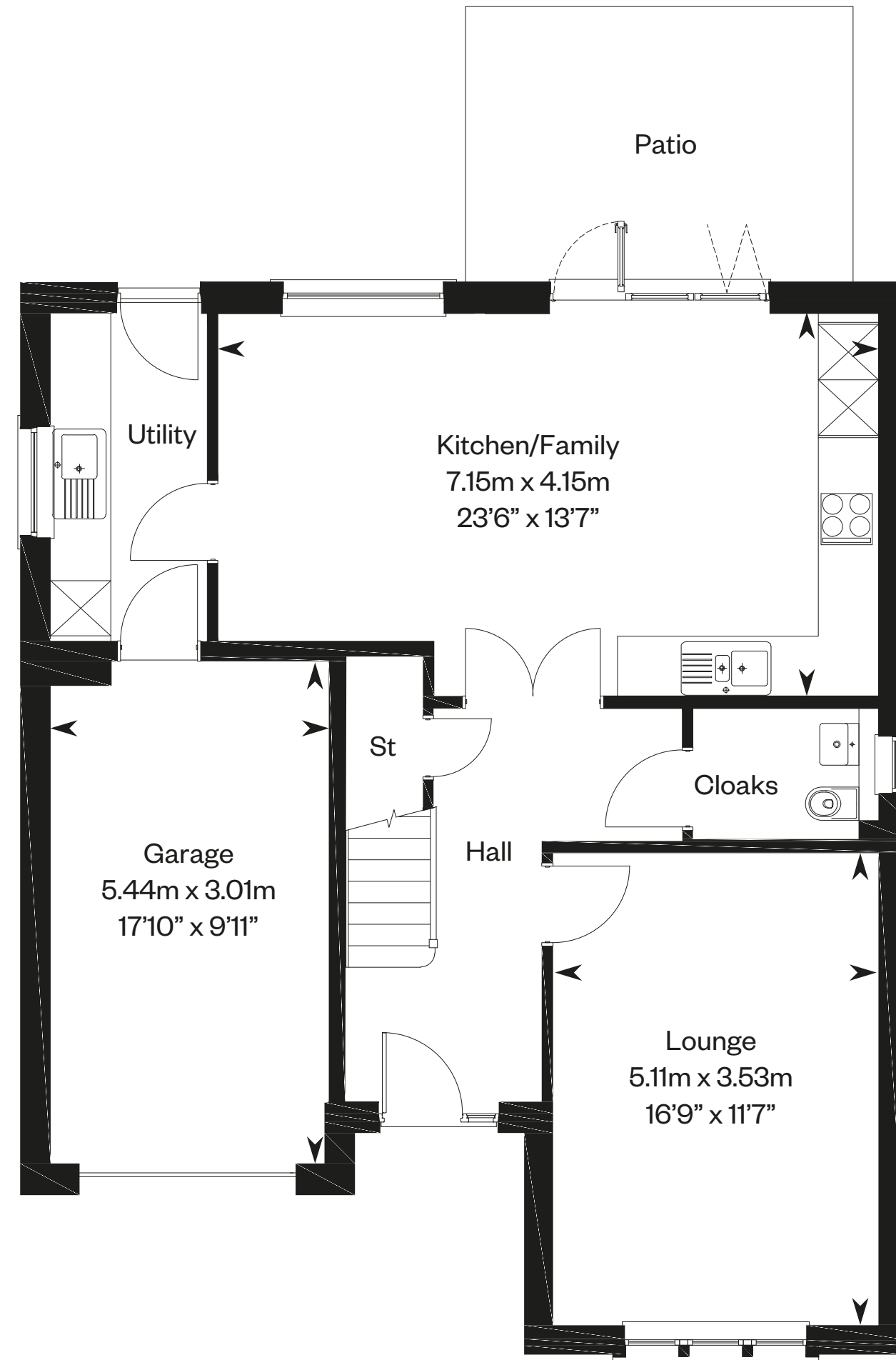
4 bedroom detached home with study



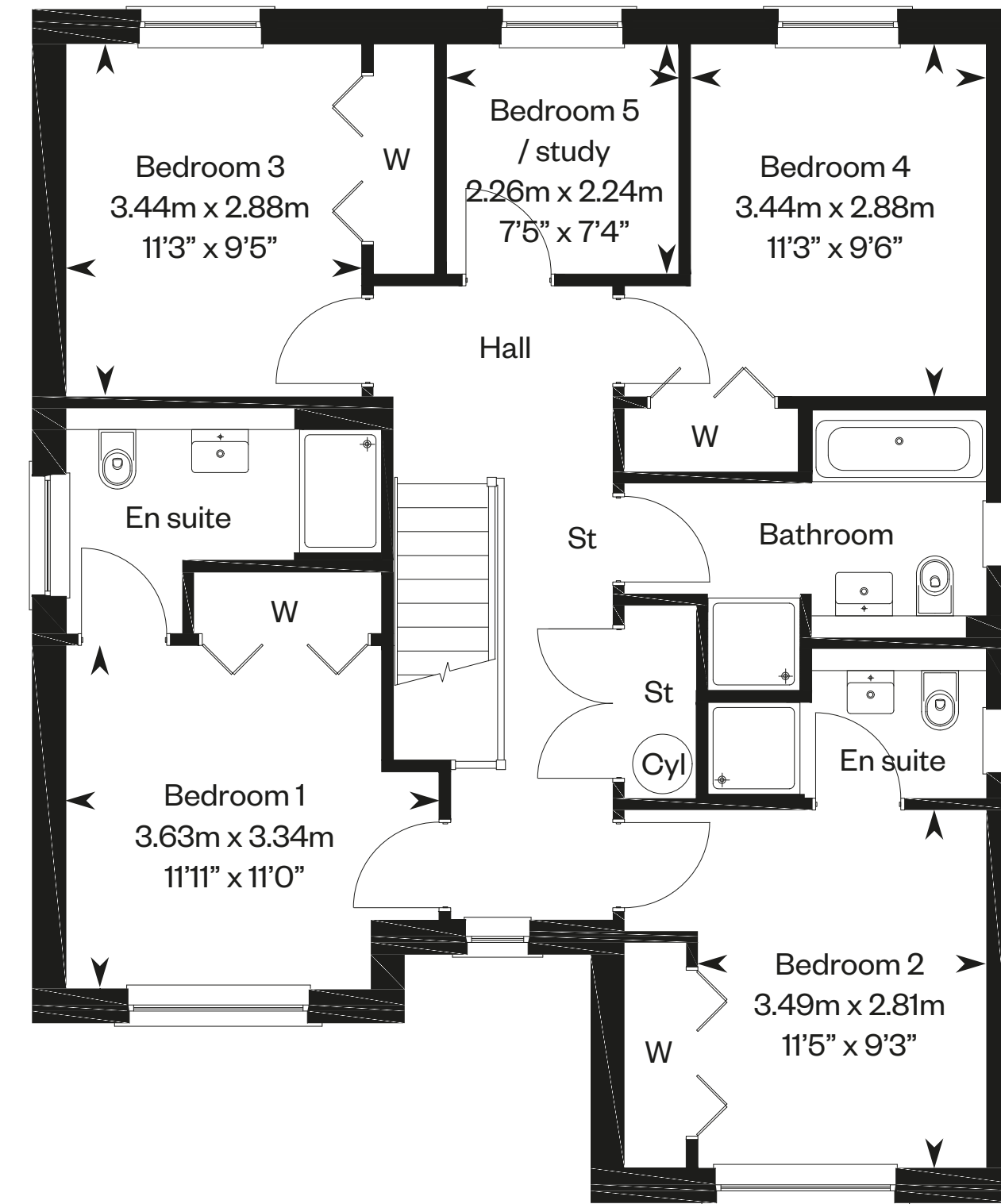
# The Colville

Plots 26, 106, 128, 130 – as shown

Plots 6, 108, 120, 123, 125 – handed



Ground floor



First floor

Please ask your Sales Consultant for further details. ST: Store cupboard. W: Wardrobe.

IMPORTANT NOTICE TO CUSTOMERS: The Consumer Protection from Unfair Trading Regulations 2008. Cala Homes (East) Limited operates a policy of continual product development and the specifications outlined in this brochure are indicative only. The computer generated images and photographs do not necessarily represent the actual finishings/elevation or treatments, landscaping, furnishings and fittings at this development. Information contained is accurate at date of publication on 06.10.22. See the main brochure for the full Consumer Protection statement.

# The Crichton

5 bedroom detached home

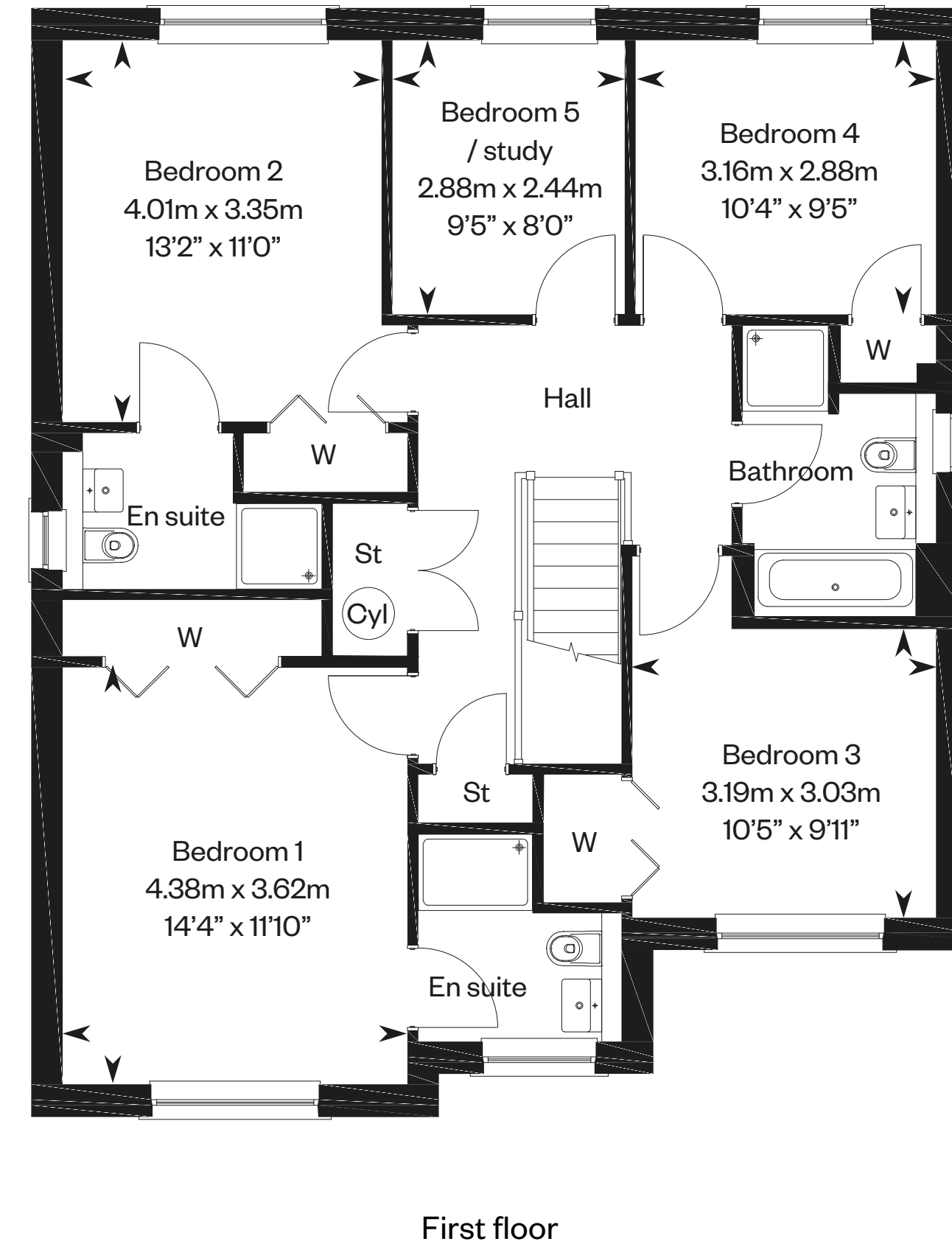
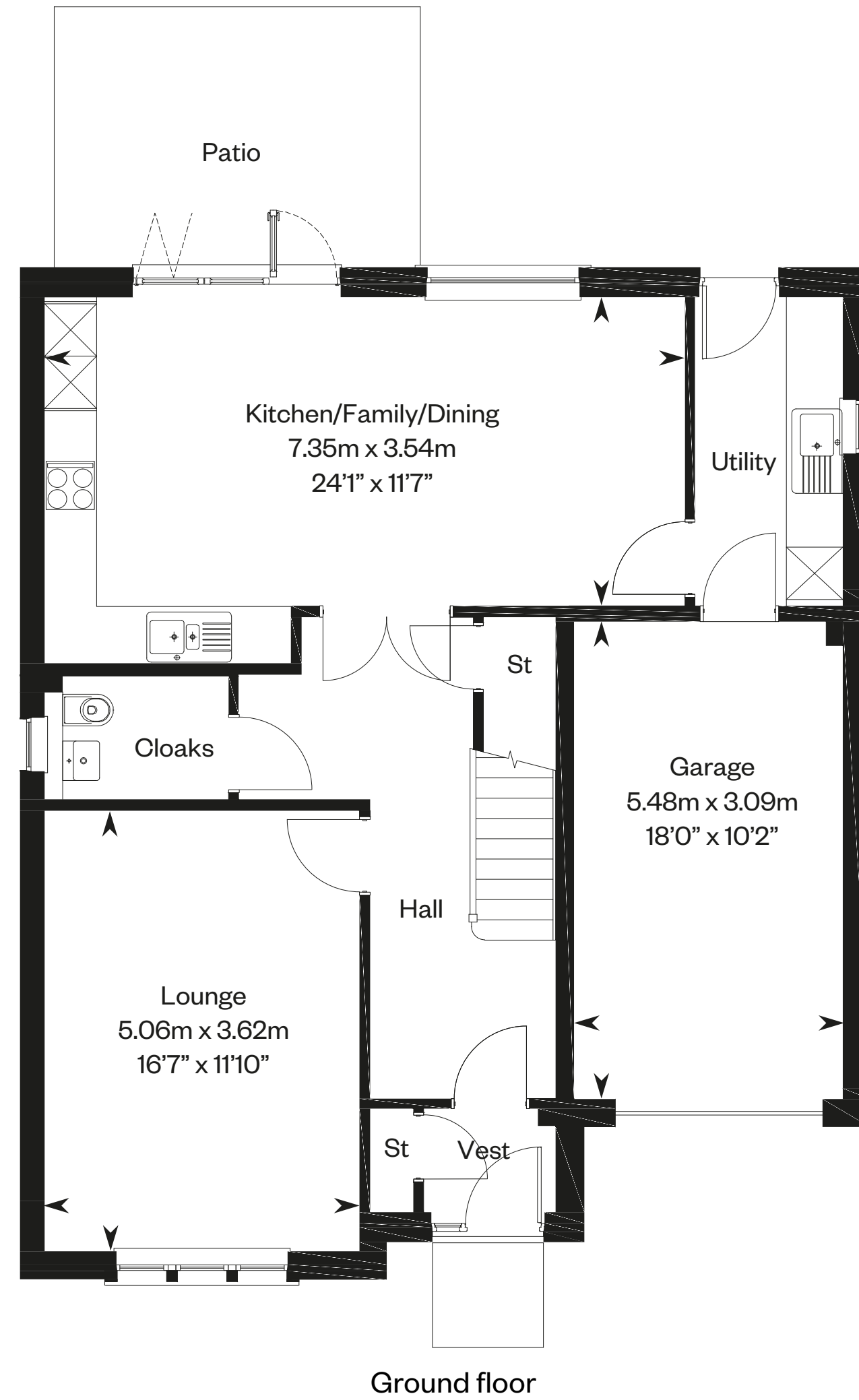


Computer Generated Image - A typical Crichton

# The Crichton

Plots 5, 7, 94, 109, 122 – as shown

Plot 129 – handed



Please ask your Sales Consultant for further details. ST: Store cupboard. W: Wardrobe.

IMPORTANT NOTICE TO CUSTOMERS: The Consumer Protection from Unfair Trading Regulations 2008. Cala Homes (East) Limited operates a policy of continual product development and the specifications outlined in this brochure are indicative only. The computer generated images and photographs do not necessarily represent the actual finishings/elevation or treatments, landscaping, furnishings and fittings at this development. Information contained is accurate at date of publication on 06.10.22. See the main brochure for the full Consumer Protection statement.



# The Darroch

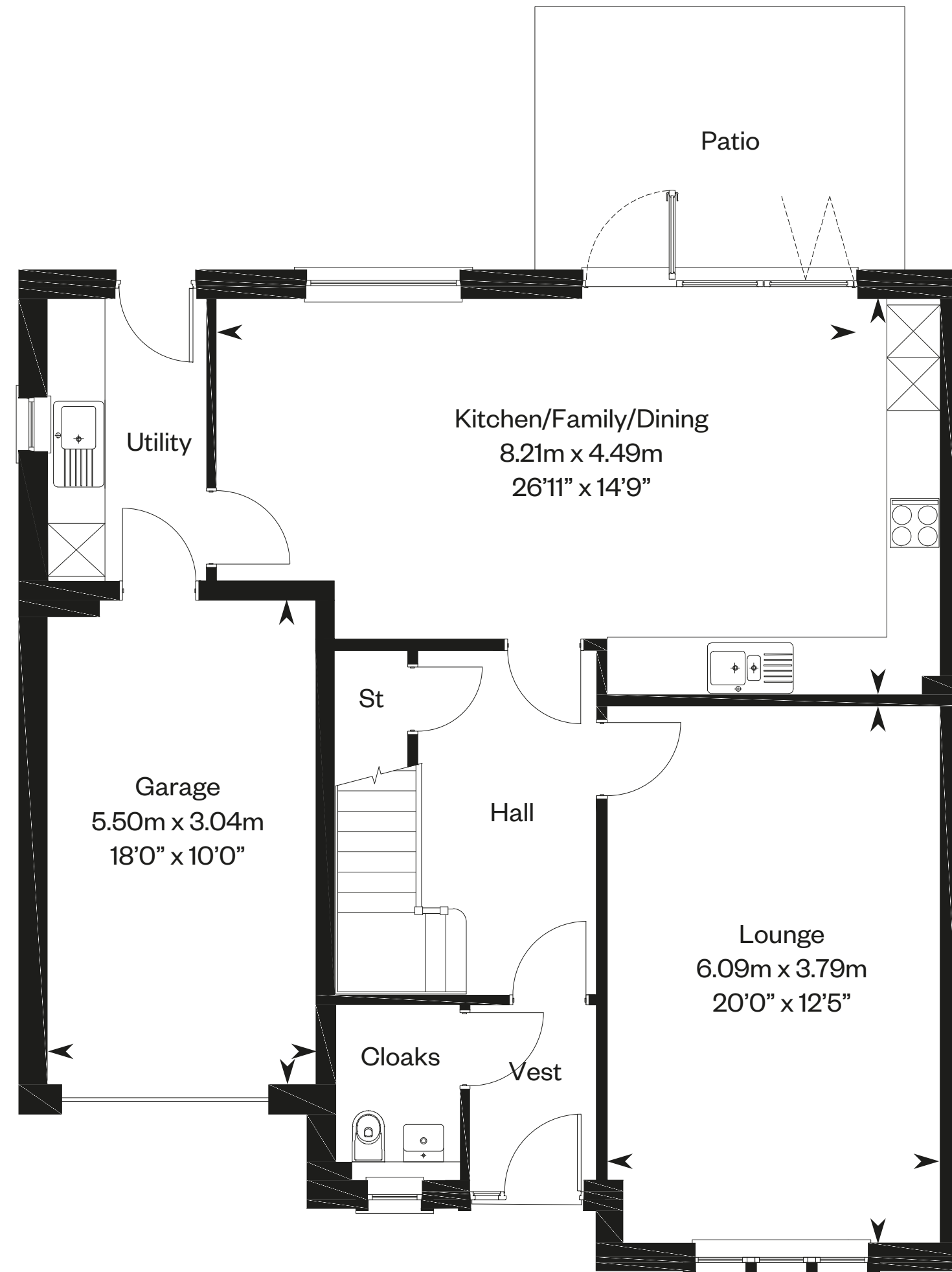
5 bedroom detached home



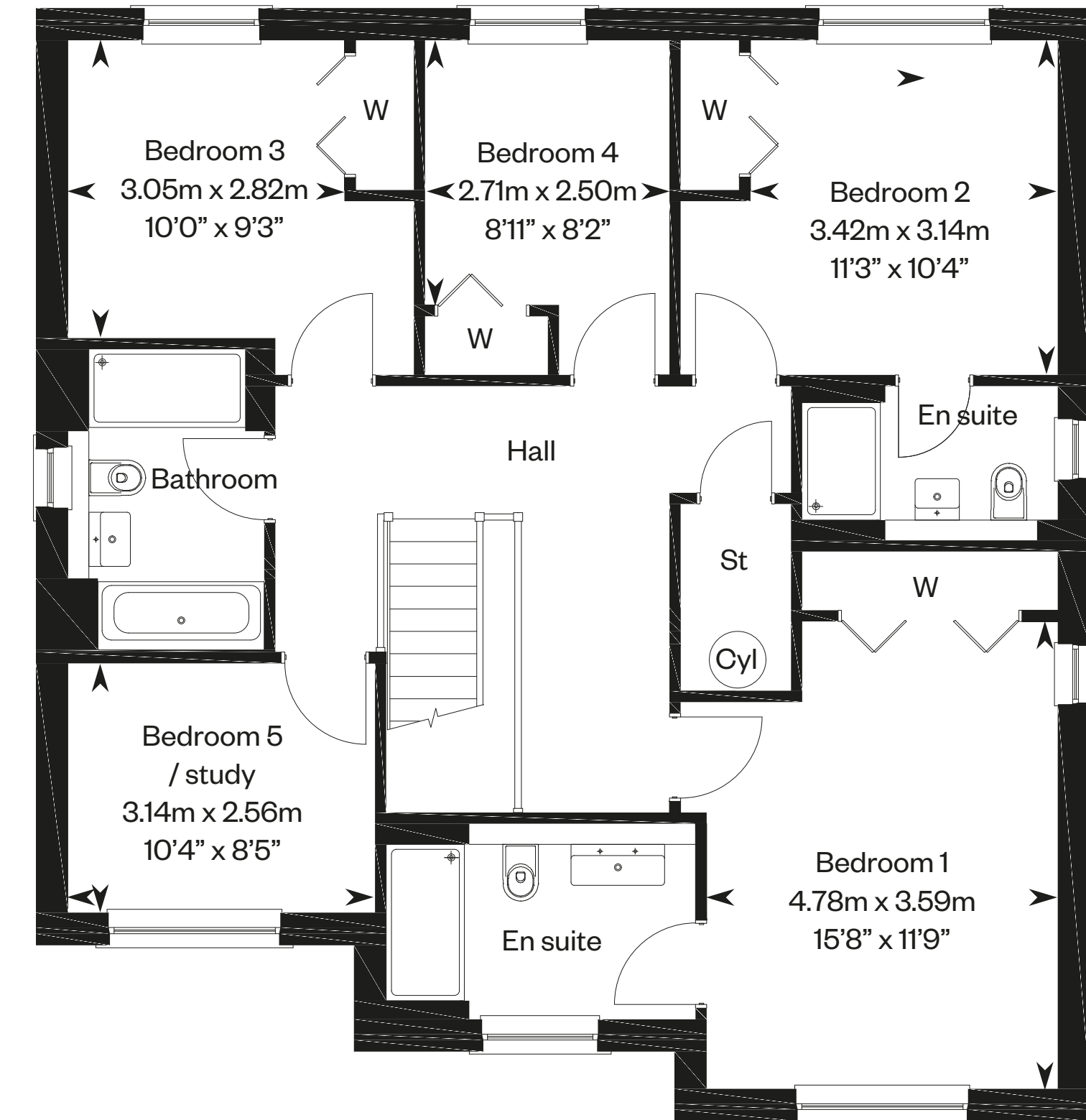
# The Darroch

Plots 30, 31 – as shown

Plot 46 – handed



Ground floor



First floor

Please ask your Sales Consultant for further details. ST: Store cupboard. W: Wardrobe.

IMPORTANT NOTICE TO CUSTOMERS: The Consumer Protection from Unfair Trading Regulations 2008. Cala Homes (East) Limited operates a policy of continual product development and the specifications outlined in this brochure are indicative only. The computer generated images and photographs do not necessarily represent the actual finishings/elevation or treatments, landscaping, furnishings and fittings at this development. Information contained is accurate at date of publication on 06.10.22. See the main brochure for the full Consumer Protection statement.

# The Elliot

4 bedroom detached home with study

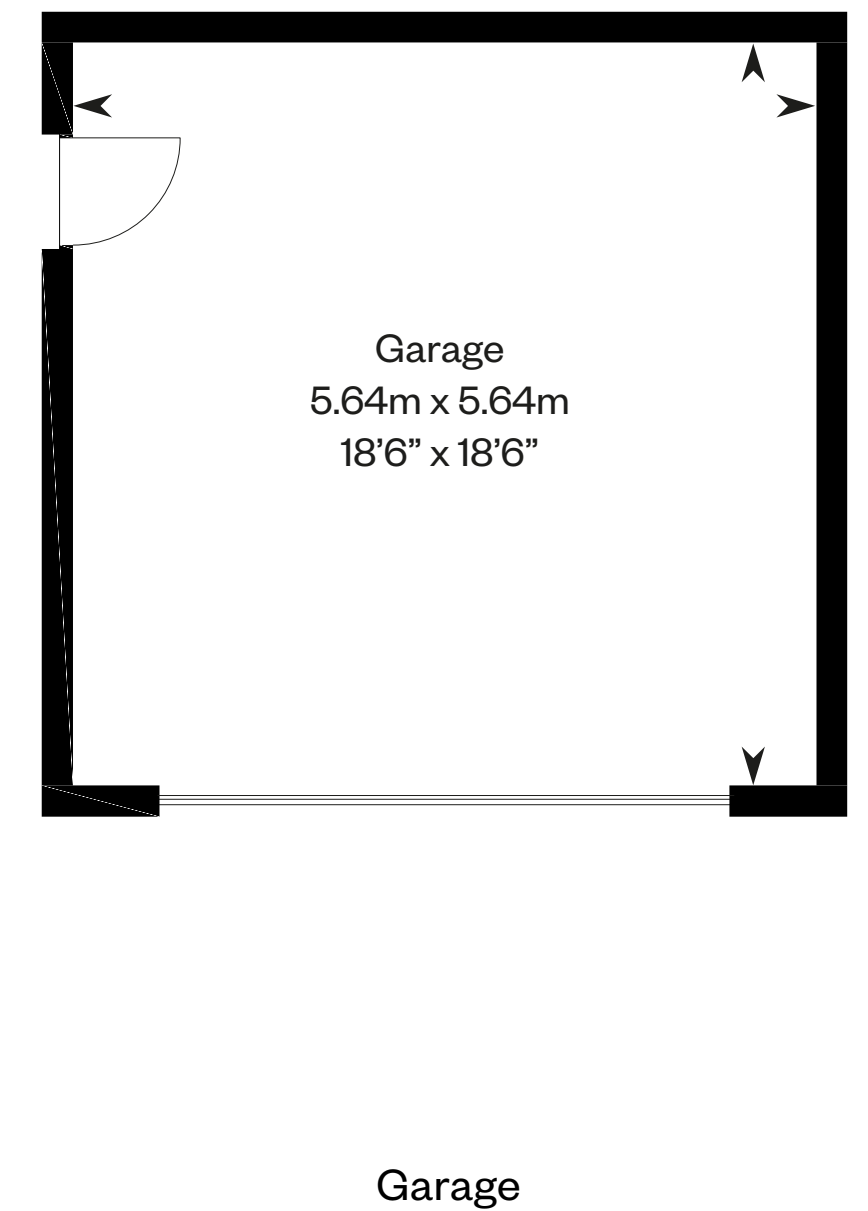
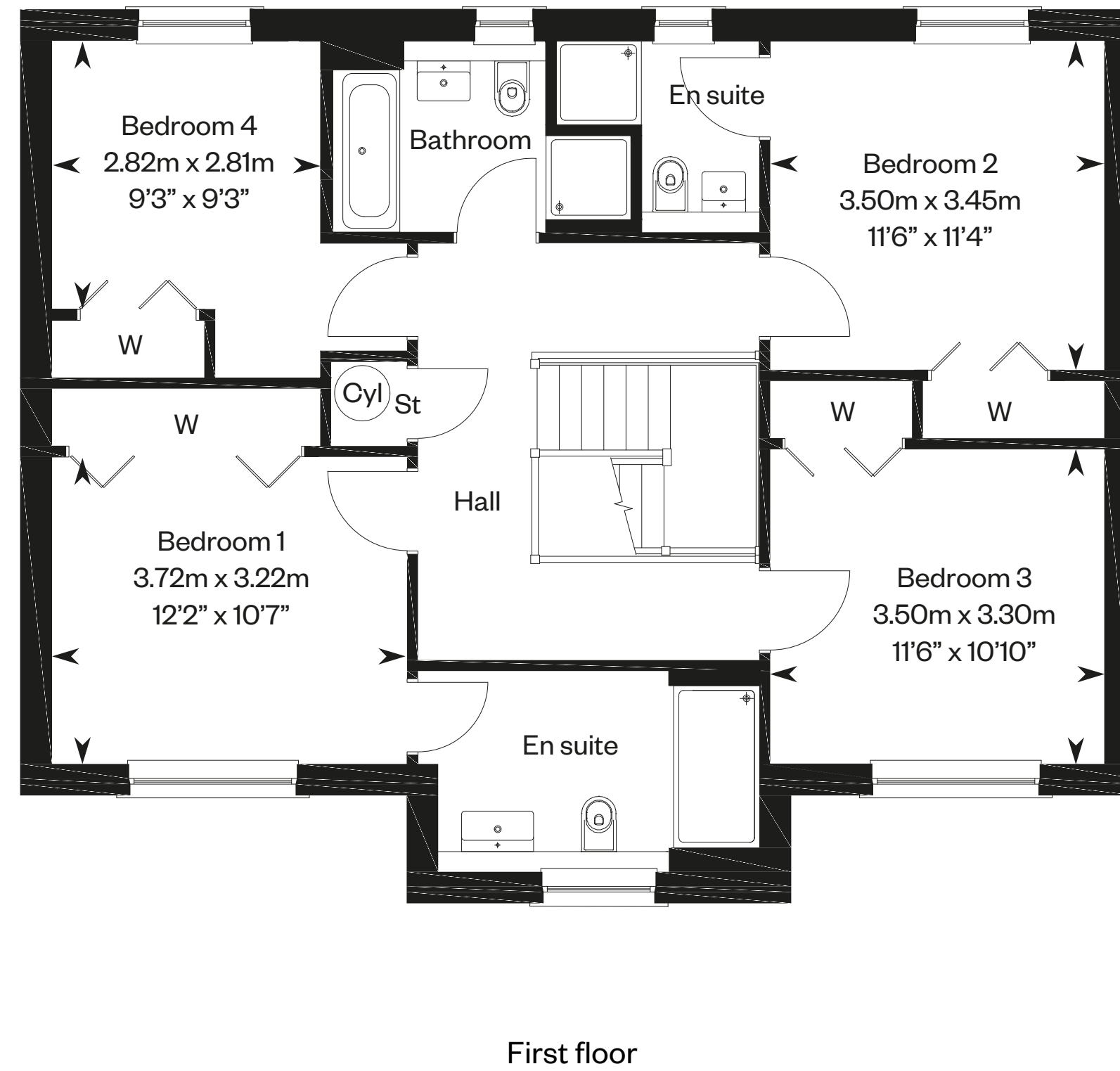
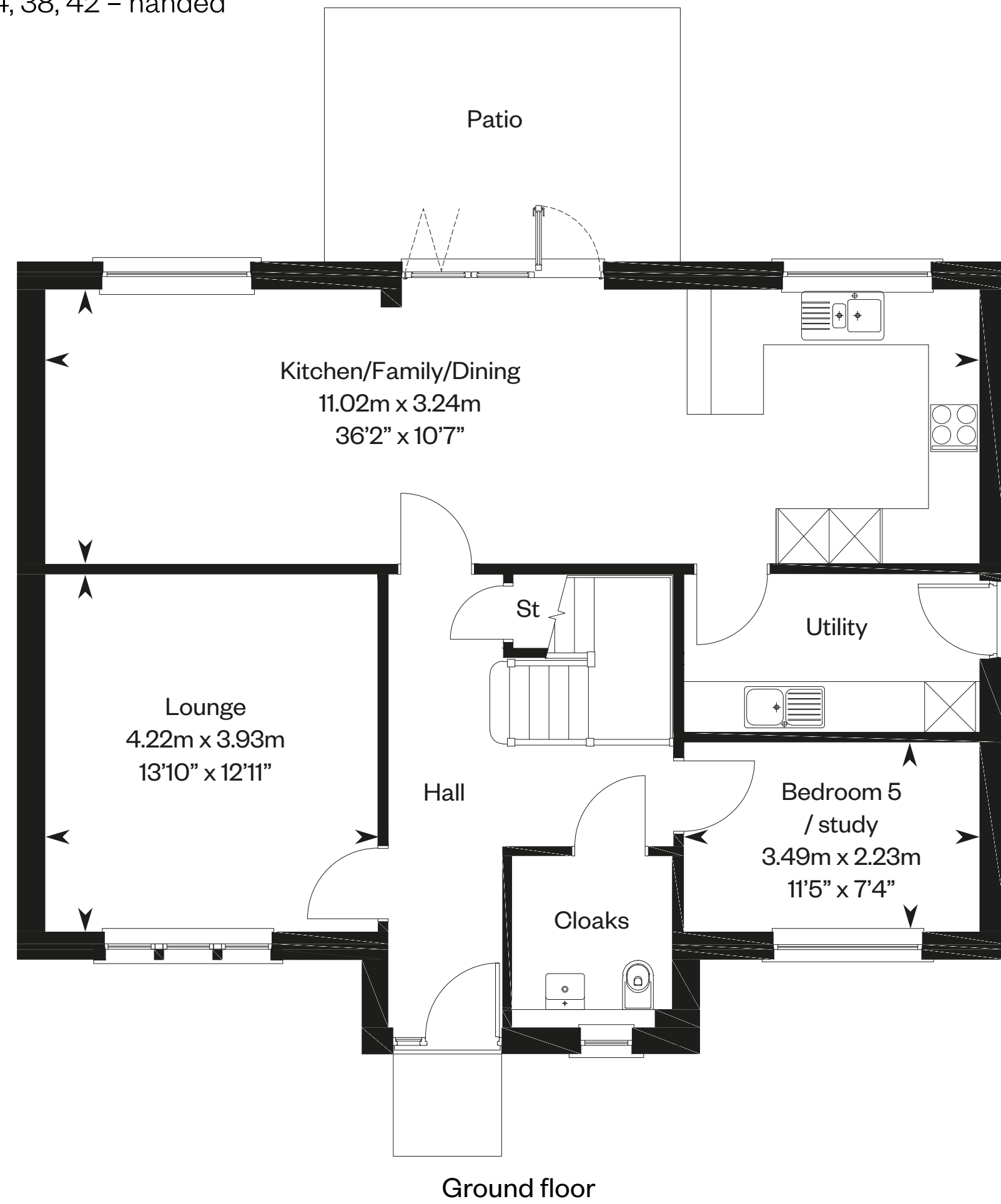


Computer Generated Image - A typical Elliot

# The Elliot

Plots 2, 28 – as shown

Plots 34, 38, 42 – handed



Please ask your Sales Consultant for further details. ST: Store cupboard. W: Wardrobe.

IMPORTANT NOTICE TO CUSTOMERS: The Consumer Protection from Unfair Trading Regulations 2008. Cala Homes (East) Limited operates a policy of continual product development and the specifications outlined in this brochure are indicative only. The computer generated images and photographs do not necessarily represent the actual finishings/elevation or treatments, landscaping, furnishings and fittings at this development. Information contained is accurate at date of publication on 06.10.22. See the main brochure for the full Consumer Protection statement.

# The Garvie

5 bedroom detached home

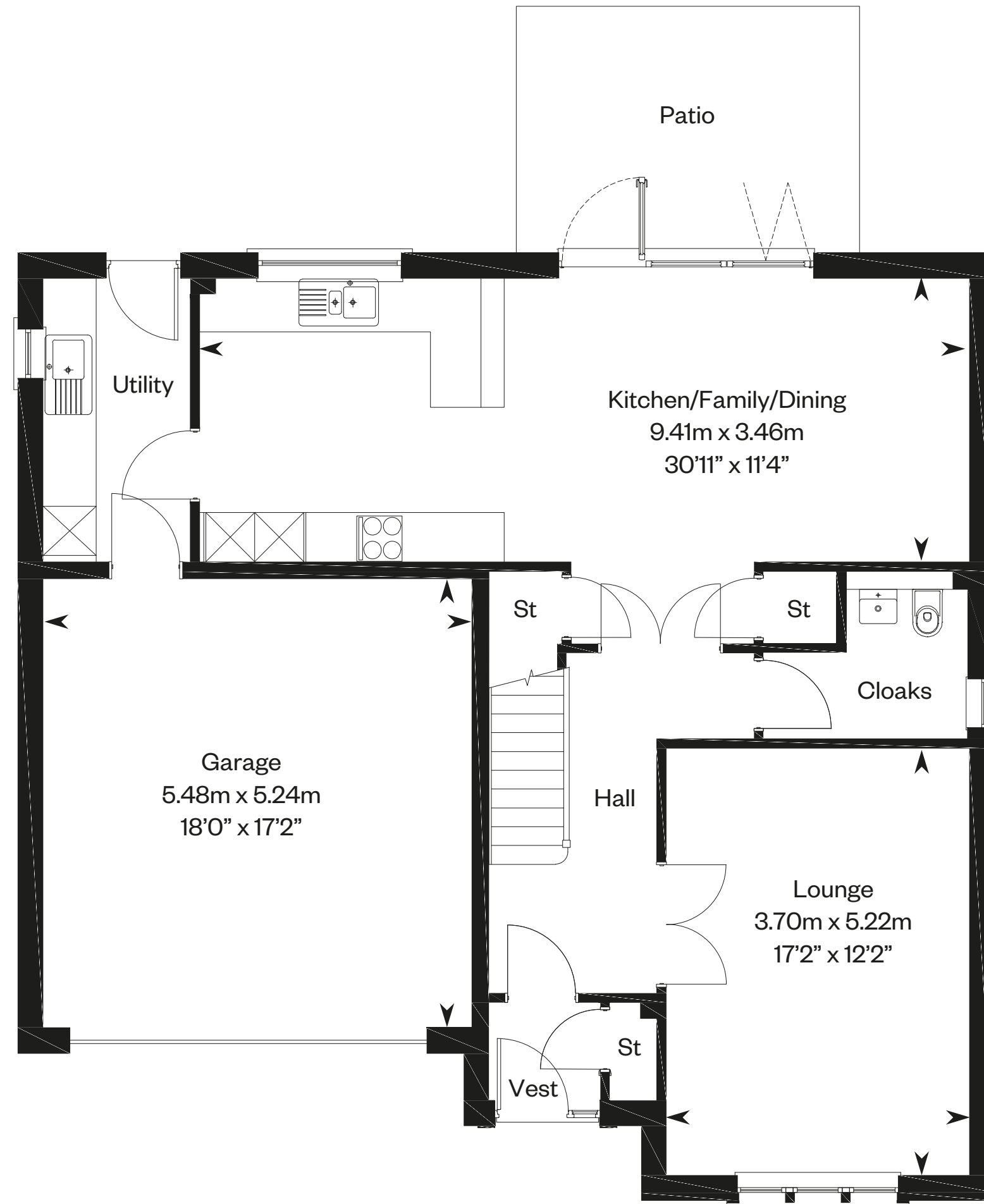


Computer Generated Image - A typical Garvie

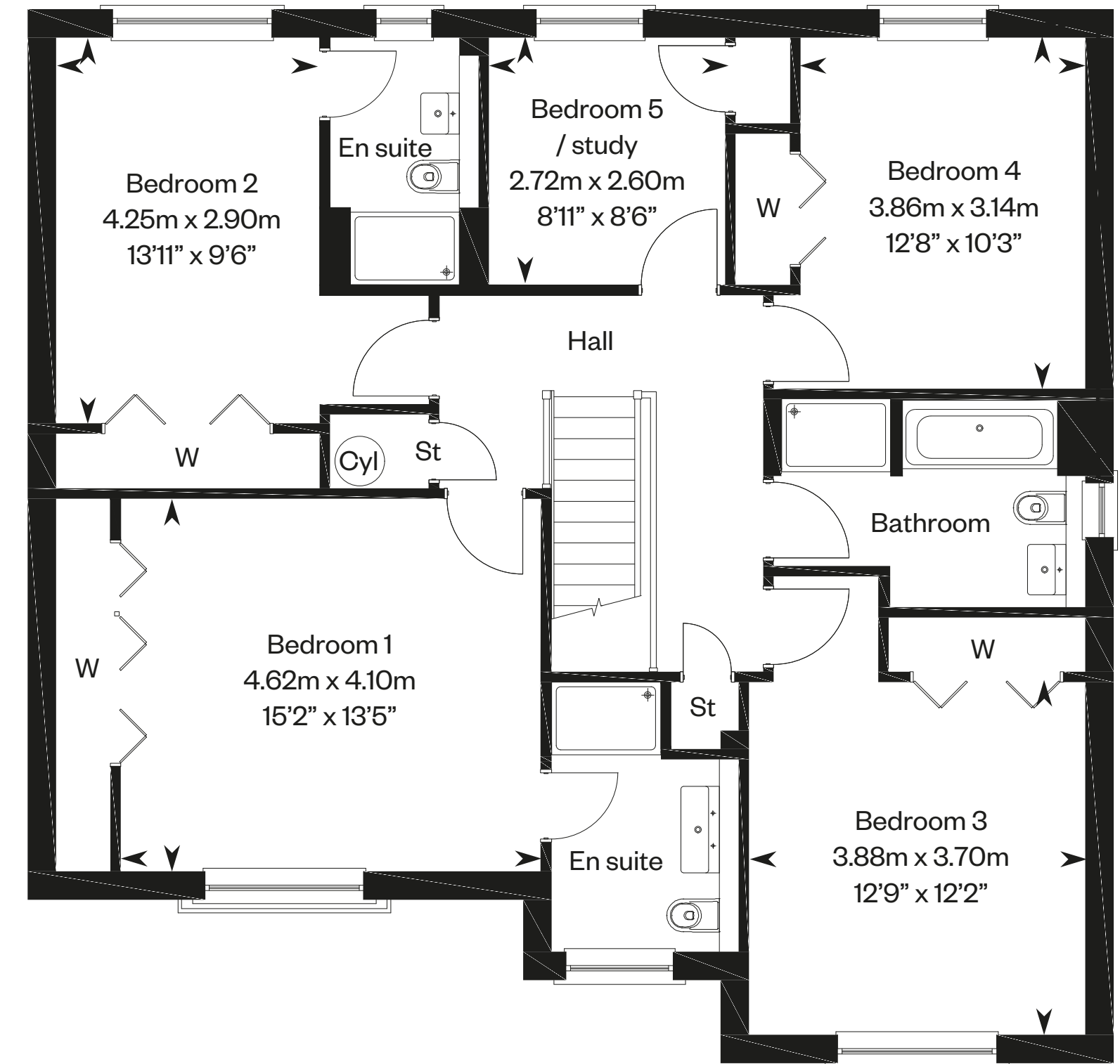
# The Garvie

Plots 35, 41 – as shown

Plots 40, 45, 93, 107 – handed



Ground floor



First floor

Please ask your Sales Consultant for further details. ST: Store cupboard. W: Wardrobe.

IMPORTANT NOTICE TO CUSTOMERS: The Consumer Protection from Unfair Trading Regulations 2008. Cala Homes (East) Limited operates a policy of continual product development and the specifications outlined in this brochure are indicative only. The computer generated images and photographs do not necessarily represent the actual finishings/elevation or treatments, landscaping, furnishings and fittings at this development. Information contained is accurate at date of publication on 06.10.22. See the main brochure for the full Consumer Protection statement.

# The Lowther

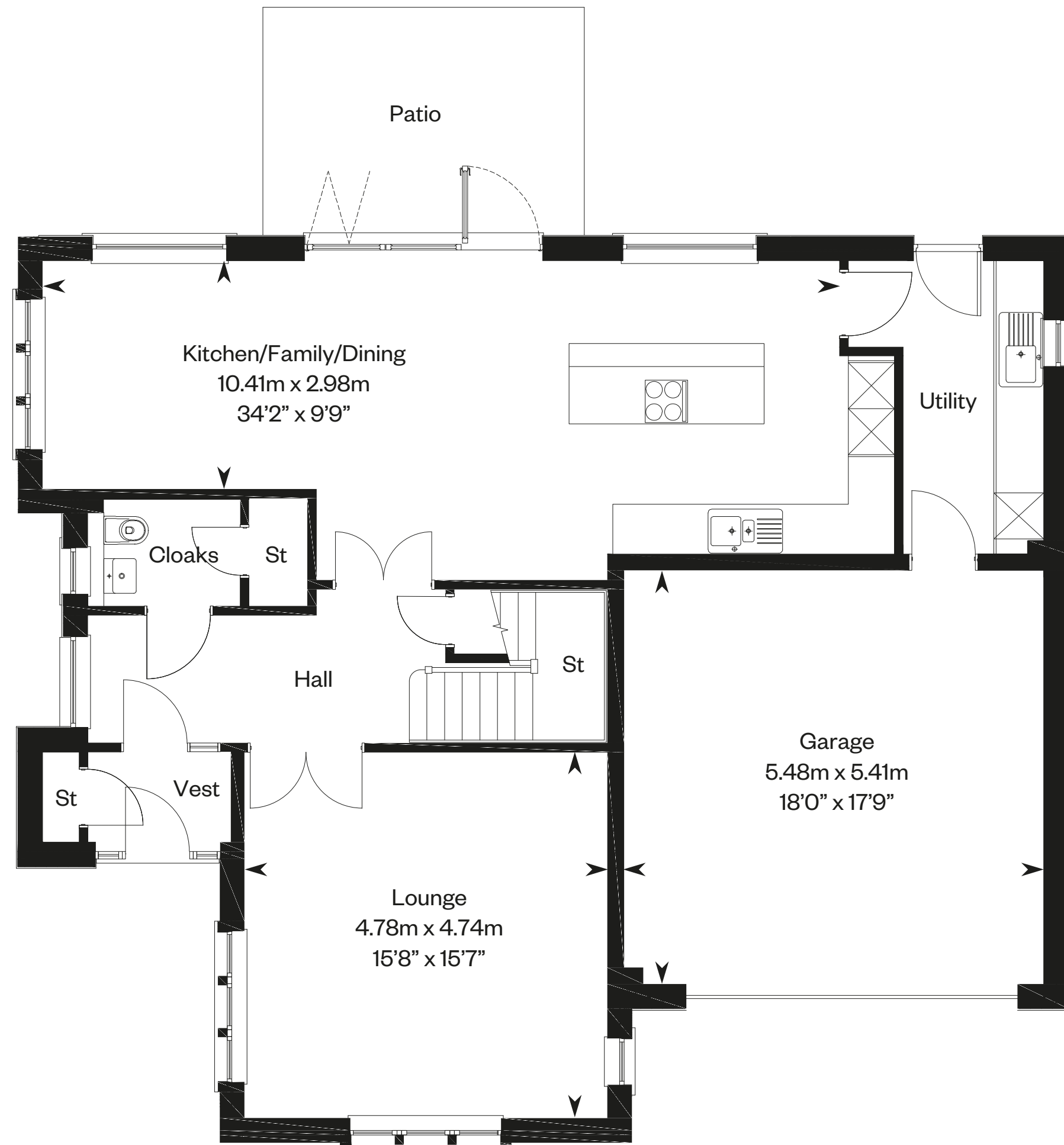
5 bedroom detached home



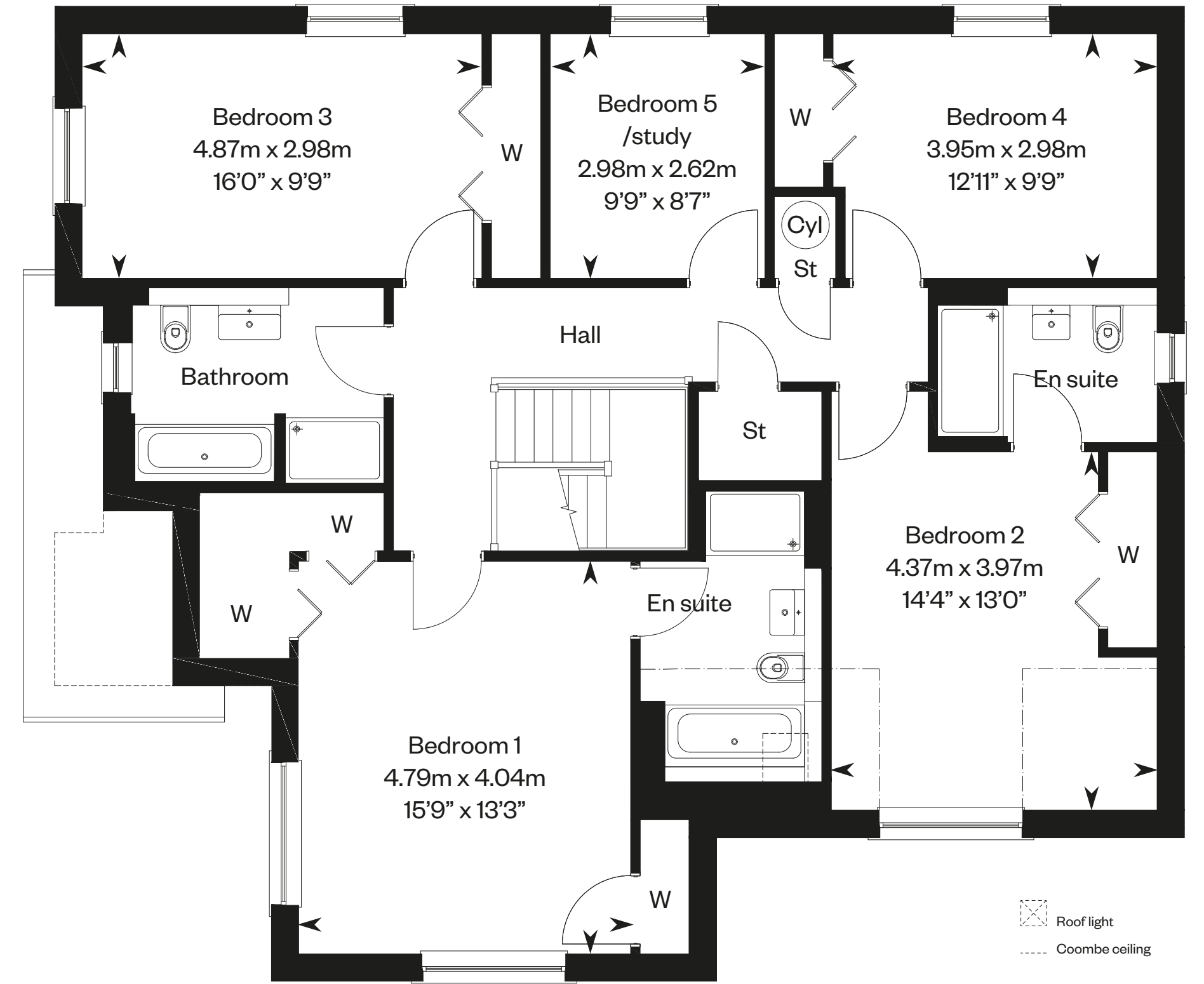
# The Lowther

Plots 36, 92, 105 – as shown

Plots 43, 110 – handed



Ground floor



First floor

Please ask your Sales Consultant for further details. ST: Store cupboard. W: Wardrobe.

IMPORTANT NOTICE TO CUSTOMERS: The Consumer Protection from Unfair Trading Regulations 2008. Cala Homes (East) Limited operates a policy of continual product development and the specifications outlined in this brochure are indicative only. The computer generated images and photographs do not necessarily represent the actual finishings/elevation or treatments, landscaping, furnishings and fittings at this development. Information contained is accurate at date of publication on 06.10.22. See the main brochure for the full Consumer Protection statement.



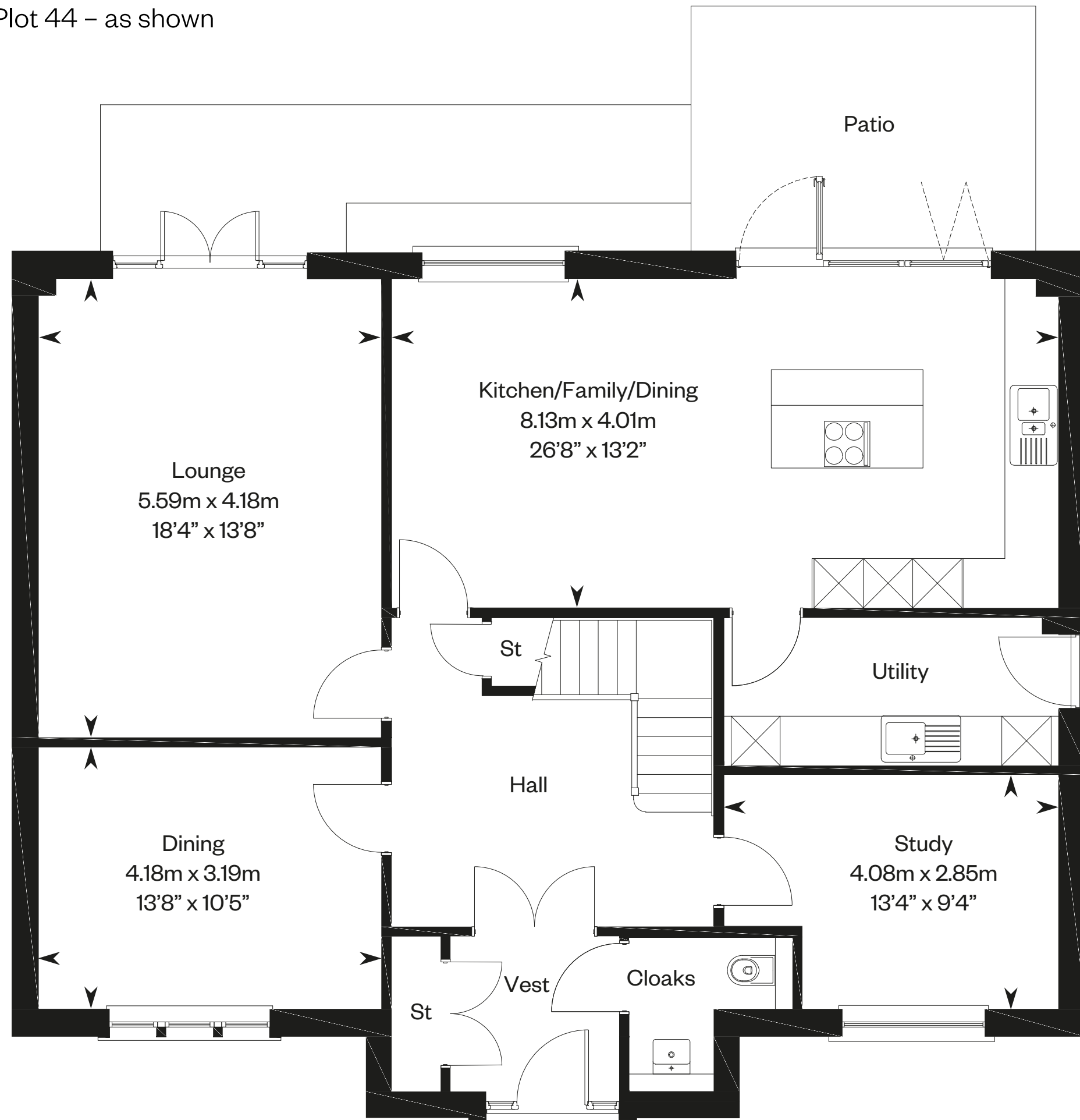
# The MacRae

5 bedroom detached home with study

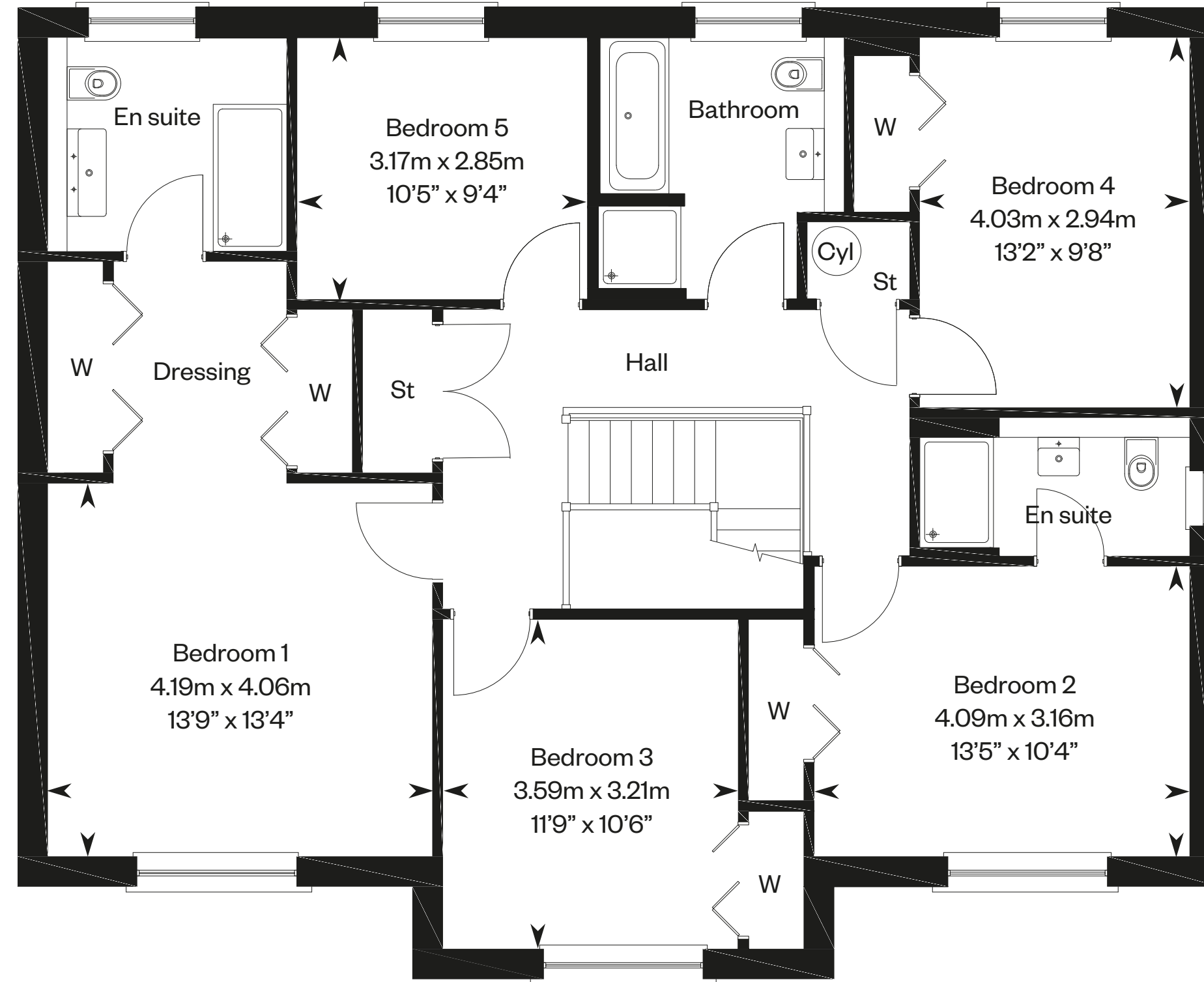


# The MacRae

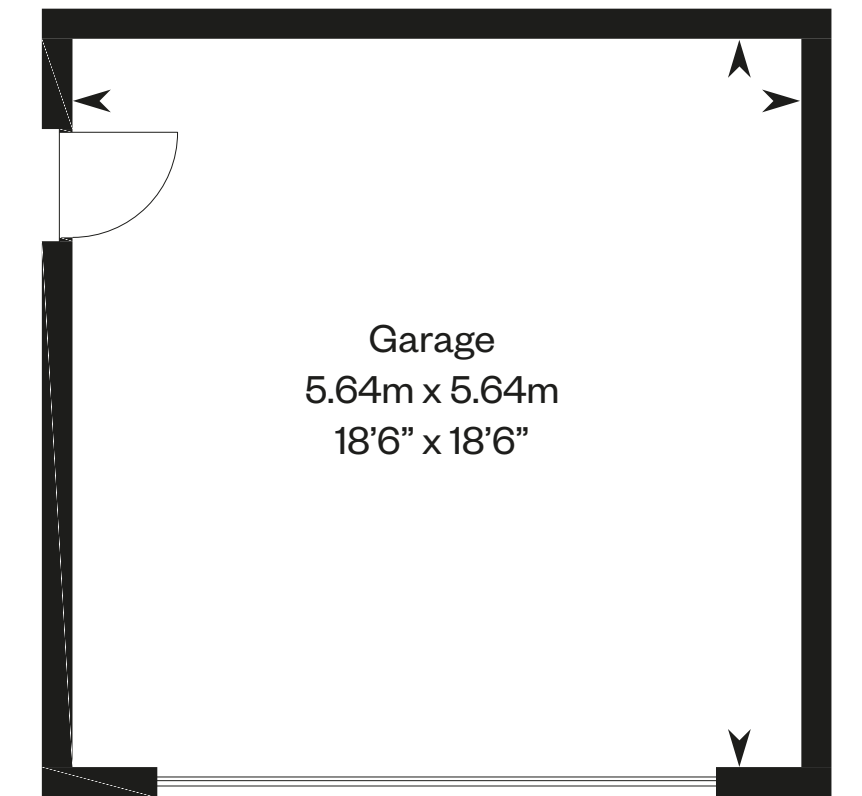
Plot 44 – as shown



Ground floor



First floor



Garage

Please ask your Sales Consultant for further details. ST: Store cupboard. W: Wardrobe.

IMPORTANT NOTICE TO CUSTOMERS: The Consumer Protection from Unfair Trading Regulations 2008. Cala Homes (East) Limited operates a policy of continual product development and the specifications outlined in this brochure are indicative only. The computer generated images and photographs do not necessarily represent the actual finishings/elevation or treatments, landscaping, furnishings and fittings at this development. Information contained is accurate at date of publication on 06.10.22. See the main brochure for the full Consumer Protection statement.