



# West Craigs

Edinburgh

The George  
3 bedroom apartments



Computer generated image - The George apartments at West Craigs



# Apartment Type D

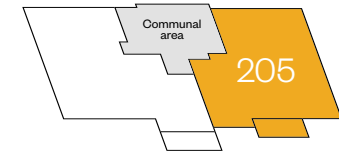
## 3 bedroom apartment

Ground floor – plot 199

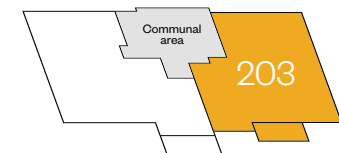
First floor – plot 201

Second floor – plot 203

Third floor – plot 205



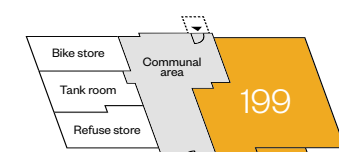
Third floor



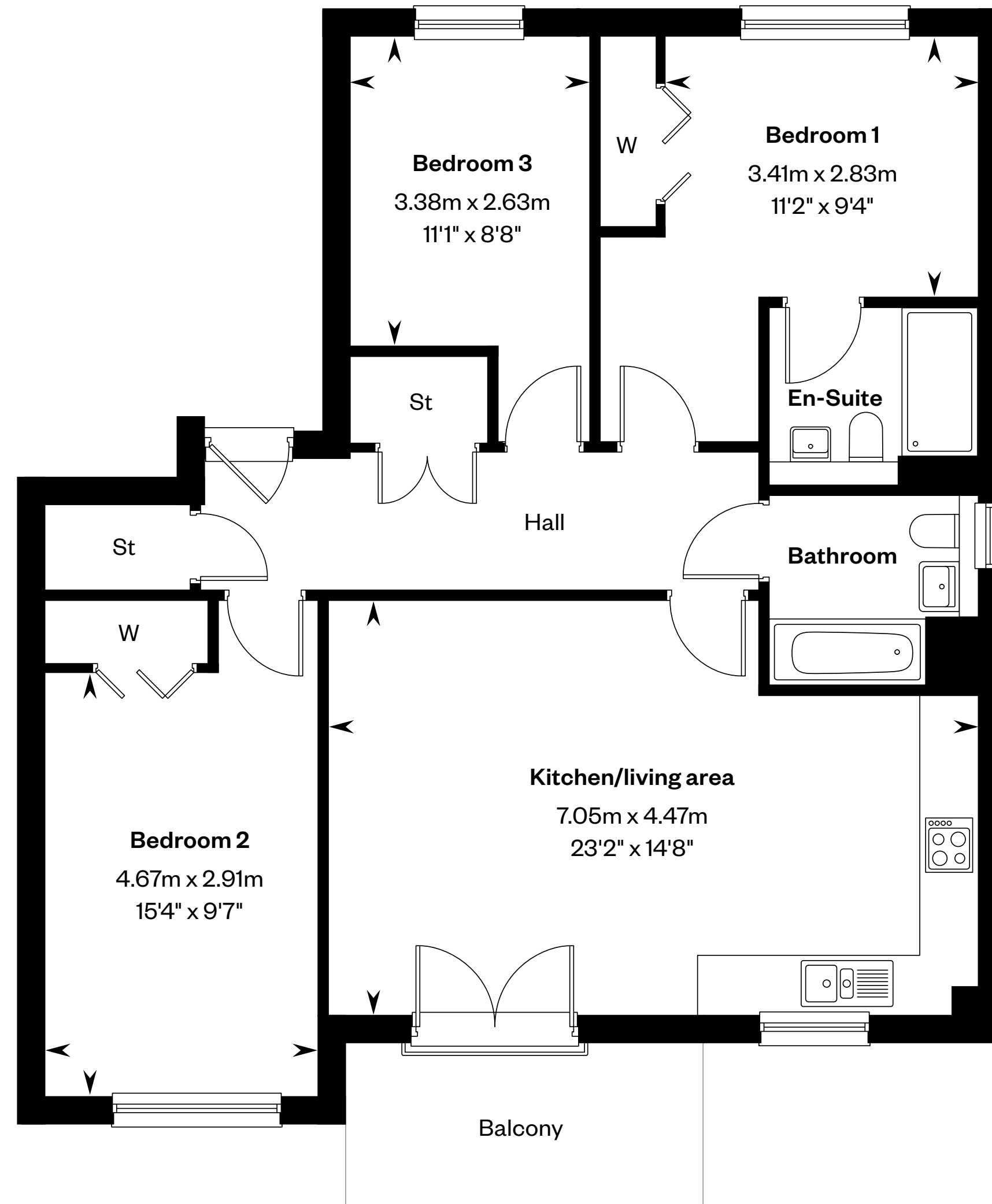
Second floor



First floor



Ground floor



Please ask your Sales Consultant for further details. St: Store cupboard. W: Wardrobe.

**IMPORTANT NOTICE TO CUSTOMERS:** The Consumer Protection from Unfair Trading Regulations 2008. Cala Homes (East) Limited operates a policy of continual product development and the specifications outlined in this brochure are indicative only. The computer generated images and photographs do not necessarily represent the actual finishings/elevation or treatments, landscaping, furnishings and fittings at this development. Information contained is accurate at date of publication on 30.07.24. See the main brochure for the full Consumer Protection statement.

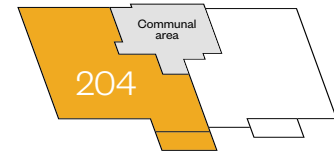
# Apartment Type E

## 3 bedroom apartment

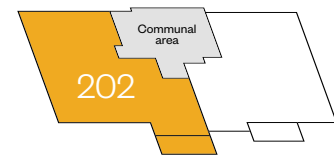
First floor – plot 200

Second floor – plot 202

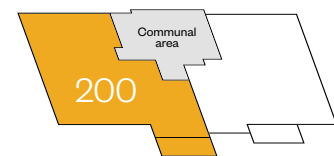
Third floor – plot 204



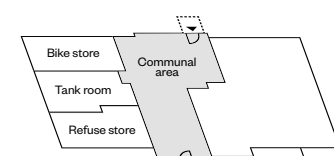
Third floor



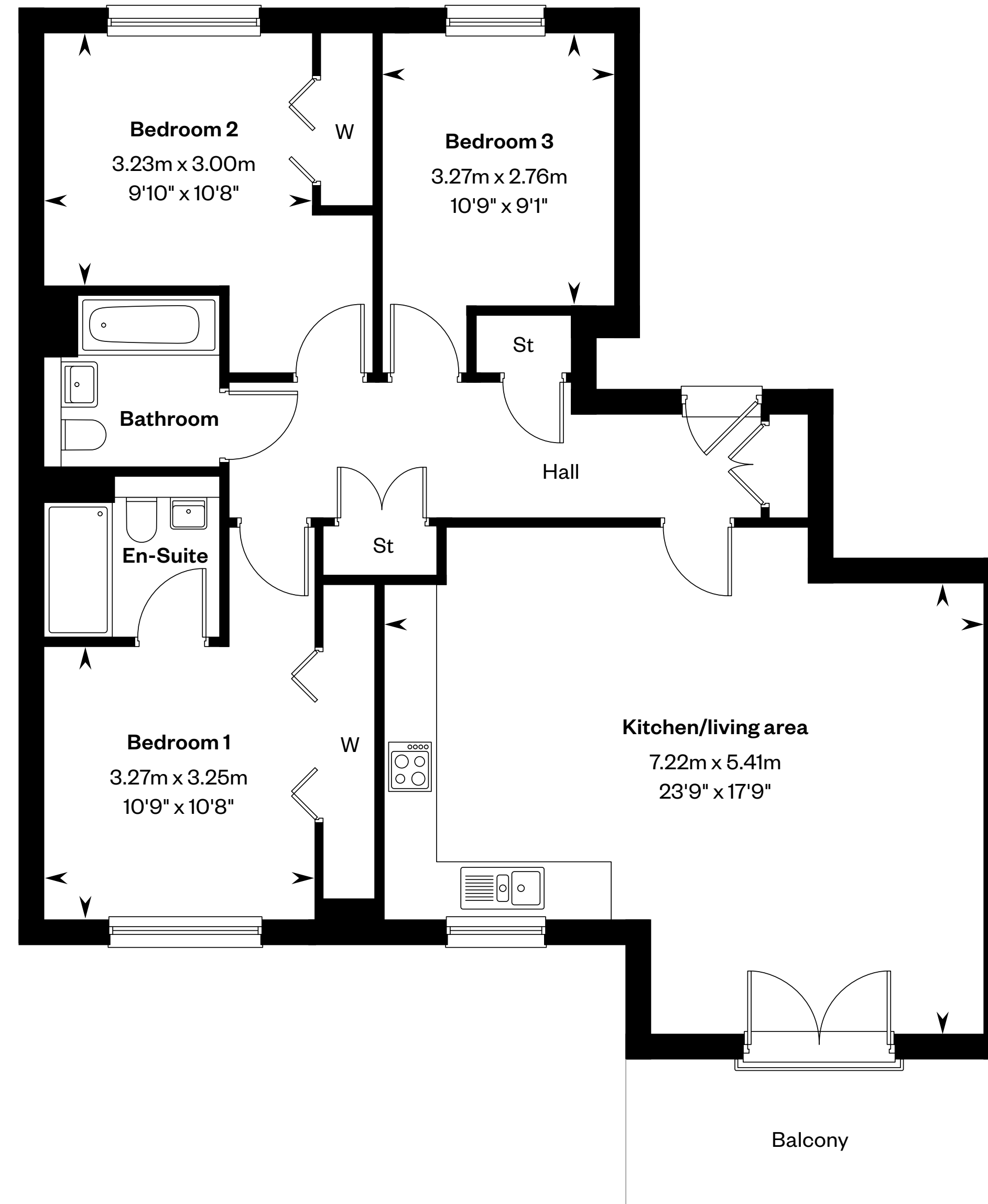
Second floor



First floor



Ground floor



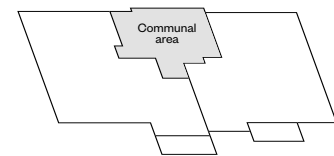
Please ask your Sales Consultant for further details. St: Store cupboard. W: Wardrobe.

IMPORTANT NOTICE TO CUSTOMERS: The Consumer Protection from Unfair Trading Regulations 2008. Cala Homes (East) Limited operates a policy of continual product development and the specifications outlined in this brochure are indicative only. The computer generated images and photographs do not necessarily represent the actual finishings/elevation or treatments, landscaping, furnishings and fittings at this development. Information contained is accurate at date of publication on 30.07.24. See the main brochure for the full Consumer Protection statement.

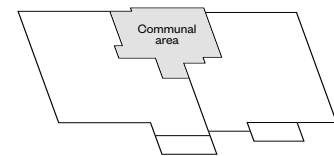
# The George

## Ground Floor

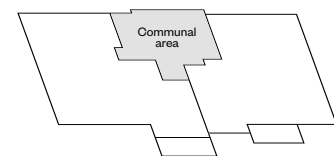
Plot 199



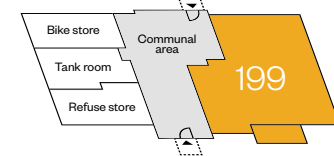
Third floor



Second floor



First floor



Ground floor

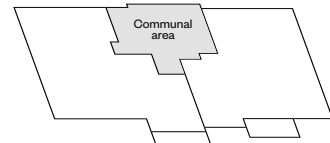
Please ask your Sales Consultant for further details. St: Store cupboard. W: Wardrobe.

**IMPORTANT NOTICE TO CUSTOMERS:** The Consumer Protection from Unfair Trading Regulations 2008. Cala Homes (East) Limited operates a policy of continual product development and the specifications outlined in this brochure are indicative only. The computer generated images and photographs do not necessarily represent the actual finishings/elevation or treatments, landscaping, furnishings and fittings at this development. Information contained is accurate at date of publication on 30.07.24. See the main brochure for the full Consumer Protection statement.

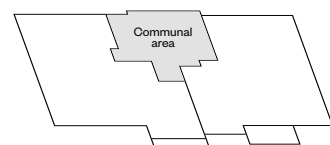
# The George

## First Floor

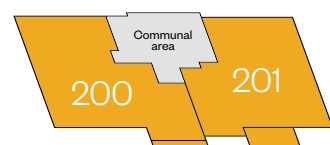
Plots 200 & 201



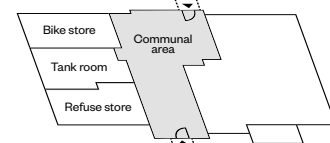
Third floor



Second floor



First floor



Ground floor

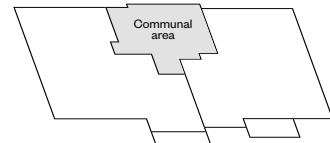
Please ask your Sales Consultant for further details. St: Store cupboard. W: Wardrobe.

**IMPORTANT NOTICE TO CUSTOMERS:** The Consumer Protection from Unfair Trading Regulations 2008. Cala Homes (East) Limited operates a policy of continual product development and the specifications outlined in this brochure are indicative only. The computer generated images and photographs do not necessarily represent the actual finishings/elevation or treatments, landscaping, furnishings and fittings at this development. Information contained is accurate at date of publication on 30.07.24. See the main brochure for the full Consumer Protection statement.

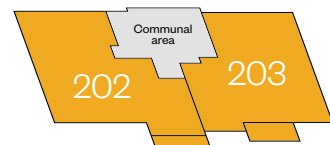
# The George

## Second Floor

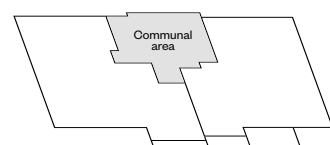
Plots 202 & 203



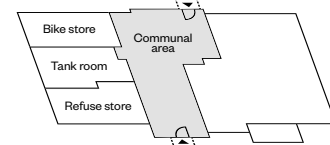
Third floor



Second floor



First floor



Ground floor

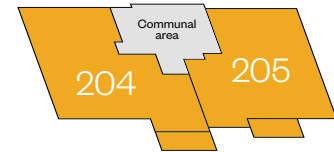
Please ask your Sales Consultant for further details. St: Store cupboard. W: Wardrobe.

**IMPORTANT NOTICE TO CUSTOMERS:** The Consumer Protection from Unfair Trading Regulations 2008. Cala Homes (East) Limited operates a policy of continual product development and the specifications outlined in this brochure are indicative only. The computer generated images and photographs do not necessarily represent the actual finishings/elevation or treatments, landscaping, furnishings and fittings at this development. Information contained is accurate at date of publication on 30.07.24. See the main brochure for the full Consumer Protection statement.

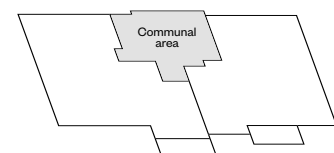
# The George

## Third Floor

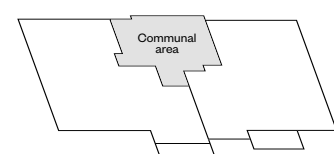
Plots 204 & 205



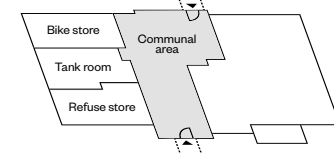
Third floor



Second floor



First floor



Ground floor

Please ask your Sales Consultant for further details. St: Store cupboard. W: Wardrobe.

**IMPORTANT NOTICE TO CUSTOMERS:** The Consumer Protection from Unfair Trading Regulations 2008. Cala Homes (East) Limited operates a policy of continual product development and the specifications outlined in this brochure are indicative only. The computer generated images and photographs do not necessarily represent the actual finishings/elevation or treatments, landscaping, furnishings and fittings at this development. Information contained is accurate at date of publication on 30.07.24. See the main brochure for the full Consumer Protection statement.



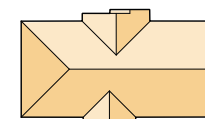
# West Craigs

## George apartments



### George apartments

3 bedroom apartments



- Denotes development boundary
- Denotes 1.8m timber fence
- Denotes retaining wall
- Please speak to a Sales Advisor for plot specific details
- Denotes hedging
- Denotes 1.8m anstone wall with piers and timber in-fill panels
- Denotes 600mm retaining wall



CGI - Typical apartments at West Craigs

The development layout is not drawn to scale and is for general guidance only. Road layouts, pathways, parking bays and external treatments may differ. Landscaping is indicative only. Please confirm the most up-to-date details with our Sales Consultant prior to reservation.

**IMPORTANT NOTICE TO CUSTOMERS:** The Consumer Protection from Unfair Trading Regulations 2008. Cala Homes (East) Limited operates a policy of continual product development and the site layout shown in this brochure insert is indicative only. Information contained is accurate at time of going to press on 30.07.24. See the main brochure for the full Consumer Protection statement.



# West Craigs

## Apartments specification

### Kitchen

- Stylish studio designed kitchen
- Metallic telescopic cooker hood
- Bosch induction hob
- Bosch integrated fridge/freezer
- Bosch integrated dishwasher
- Bosch single multi function fan assisted oven
- Bosch washer dryer (as design dictates)
- 1½ bowl granite sink and drainer in kitchen

### Bathrooms & en suites

- White Laufen Pro WC and wash basin
- White Carron bath
- Vado Life taps and bath mixer
- Vado thermostatic showers to en suites
- Chrome finished shower enclosures
- Thermostatic combined bath filler and handheld spray set (as design dictates)
- Chrome towel warmers (as design dictates)
- Choice of wall tiling from Porcelanosa ranges\*
- Soft close toilet seats

### Decoration

- Internal walls will be finished in white emulsion
- Ceilings will be finished in white emulsion
- White satin finish to skirtings and facings
- White satin finish to internal pass doors
- French doors to balcony/terrace (as design dictates)
- Contemporary lever style door handles

### Wardrobe

- Bi-fold doors to bedrooms (as design dictates)

### Electrical

- Downlighters to bathroom and en suites (as design dictates)
- Low energy pendant light fitting to all other rooms
- Low energy external light fitting provided to external doors
- Shaver socket (as design dictates)
- TV/data distribution points
- Multigrad switching of kitchen appliances
- Double socket with integral USB power slots to kitchen and master bedroom (as design dictates)
- PV panels fitted to the roof (as design dictates)

### Security & safety

- Mains-wired smoke detectors
- Heat detector in kitchen
- Battery-operated Carbon Monoxide detectors
- Mains operated Carbon Dioxide monitor to master bedroom
- Communal entrance point to stairwells fitted with fob-operated multi-point locking device
- Door entry system
- Burglar alarm to ground floor

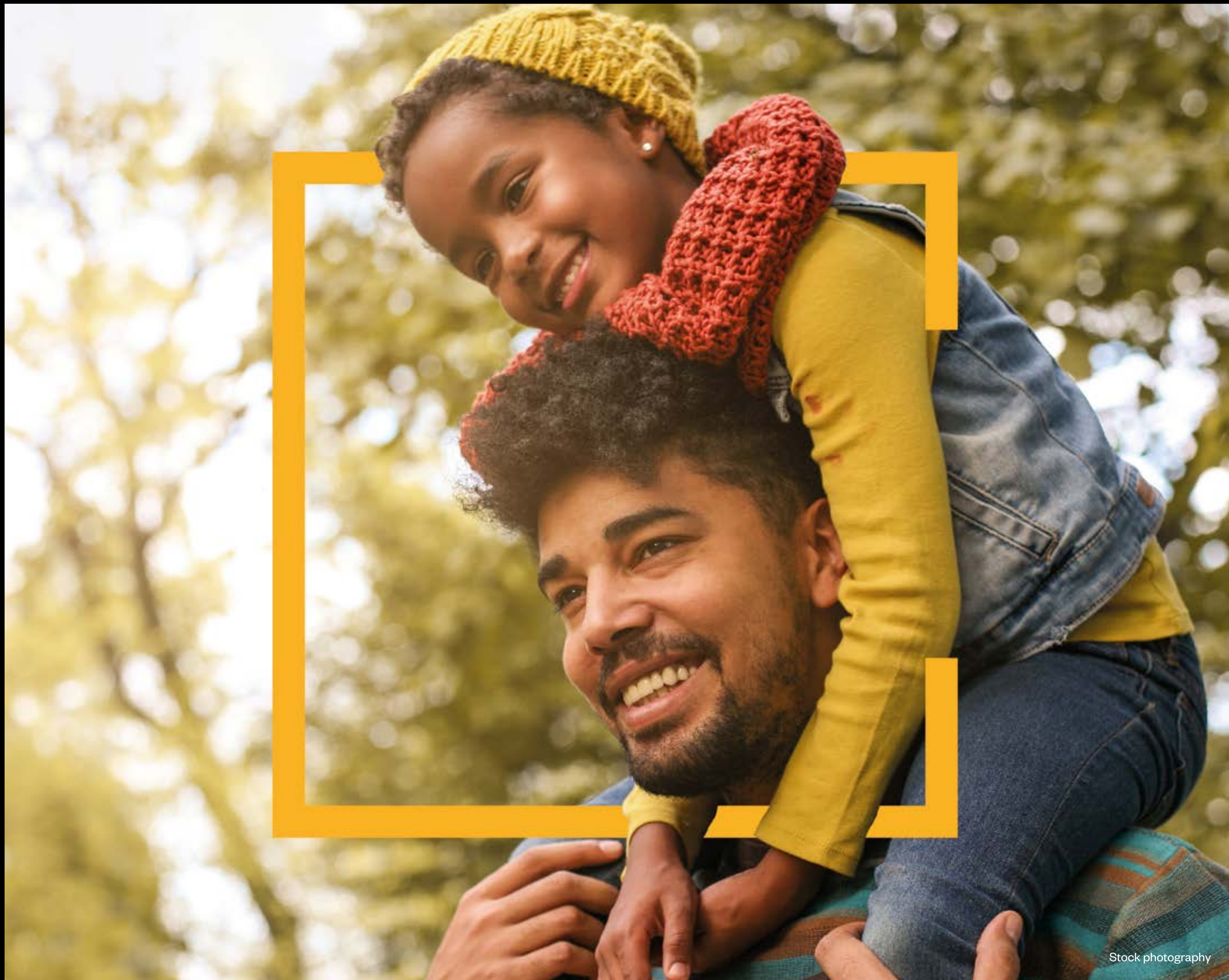
### Plumbing & heating

- Central heating via a high efficiency gas boiler heating system
- Thermostatic heating controls

### Externals

- uPVC double-glazed windows
- A factoring company will be appointed to maintain all common areas with an annual fee payable by residents
- Apartment blocks feature composite apartment entrance doors with 3-point locking system





Stock photography



# Welcome to your new home

Cala Homes at West Craigs,  
Turnhouse Road,  
EH12 0AX

[Click here to arrange your viewing](#)



IMPORTANT NOTICE TO CUSTOMERS: The Consumer Protection from Unfair Trading Regulations 2008. Cala Homes (East) Limited operates a policy of continual product development and the specifications outlined in this brochure are indicative only. Cala reserves the right to implement minor changes to the sizes and specifications shown on any plans or drawings in this brochure without warning. Where alterations to the design, construction or materials to be used in the construction of the property would materially alter the internal floor space, appearance or market value of the property, we will ensure that these changes are communicated to potential purchasers. Whilst these particulars are prepared with all due care for the convenience of intending purchasers, the information is intended as a guide. The computer generated images and photographs do not necessarily represent the actual finishings/elevation or treatments, landscaping, furnishings and fittings at this development. Floor plans, dimensions and specifications are correct at the time of print. The illustrated location map is a general guide only. Please note that distances and timings referred to in this brochure are approximate and sourced from Google Maps and nationalrail.co.uk. For information relating to weather in the area of this development, please refer to the Meteorological Office (www.metoffice.gov.uk). Nothing contained in this brochure shall constitute or form part of any contract. Information contained in this brochure is accurate at time of going to press on 30.07.24. Cala (East) Limited, registered in Scotland company number SC053746. Registered office: Johnstone House, 52-54 Rose Street, Aberdeen AB10 1HA. Agent of Cala Management Limited.