



The Allan

3 bedroom terraced home



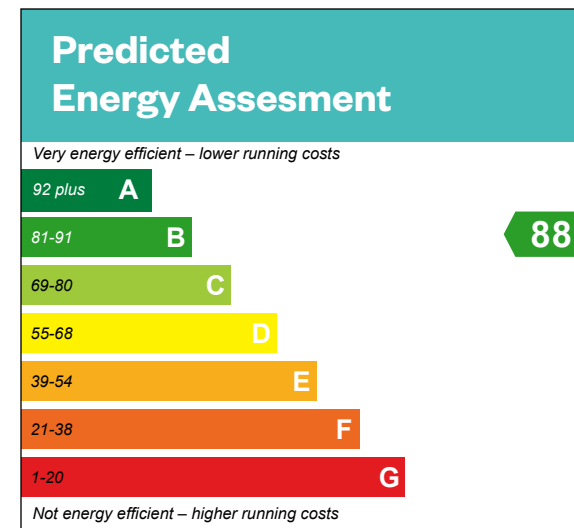
Computer generated image - The Allan

The Allan

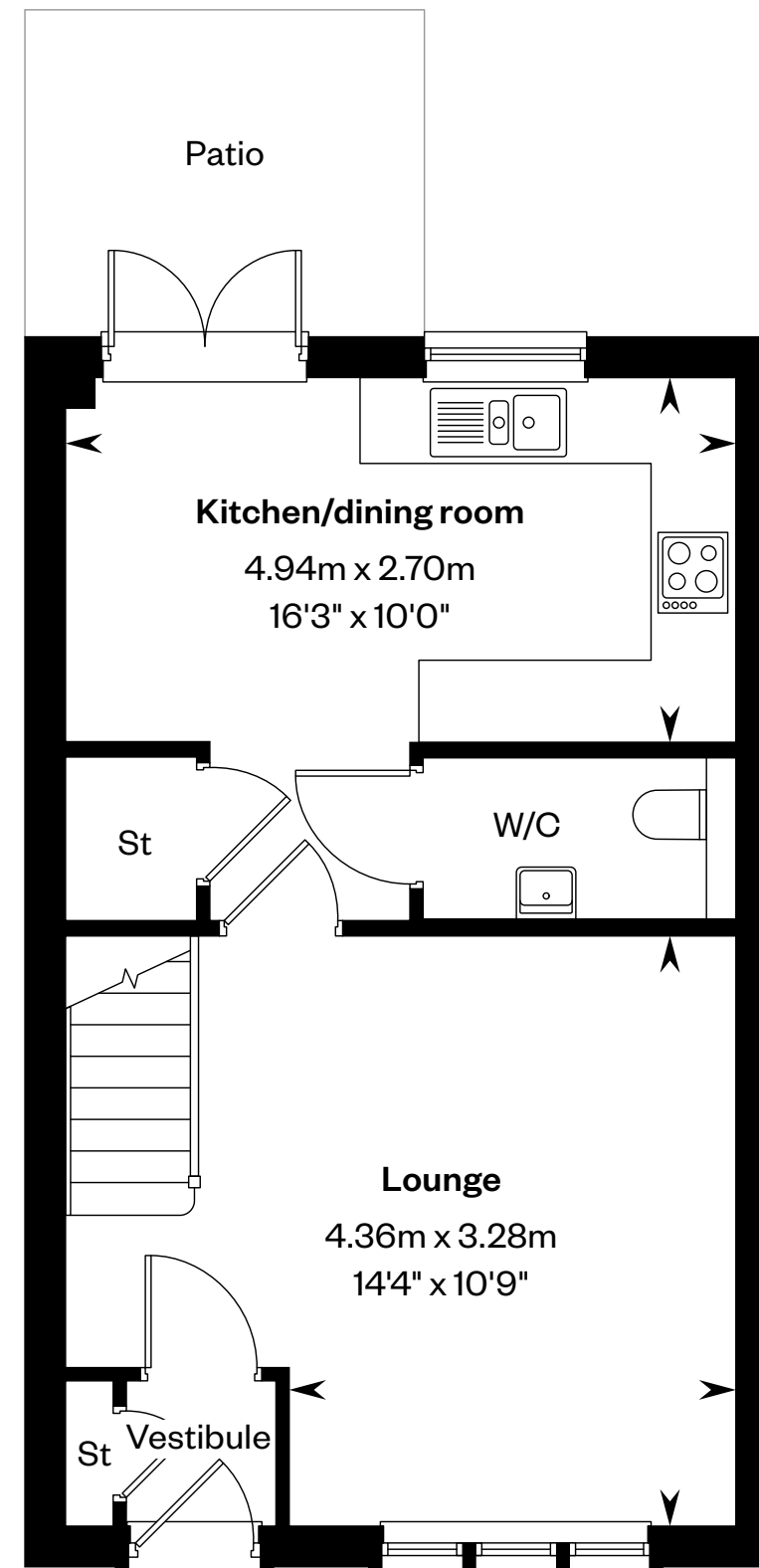
3 bedroom terraced home

Plots 2, 3, 6, 7, 9, 10, 12, 21, 22, 23, 25, 26, 37, 49, 54, 55, 58, 59, 62, 63, 72, 104, 105 & 106 – as shown

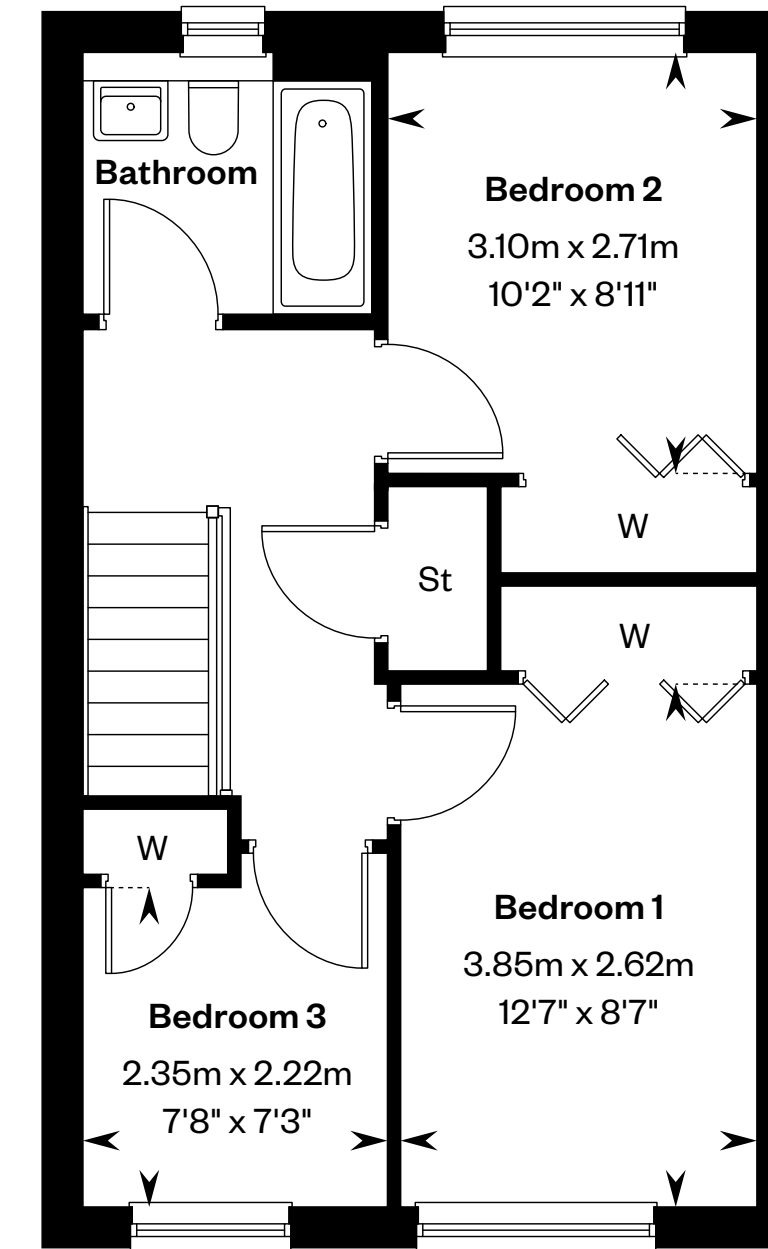
Plots 4, 11, 24, 27, 38, 52, 56, 57, 60, 61, 64, 69, 70, 71 & 103 – handed



This is a Predicted Energy Assessment for properties that are incomplete. Once the property is completed, this rating will be updated and an official Energy Performance certificate will be created for the property.



Ground floor



First floor

Please ask your Sales Consultant for further details. St: Store cupboard. W: Wardrobe.

IMPORTANT NOTICE TO CUSTOMERS: The Consumer Protection from Unfair Trading Regulations 2008. Cala Homes (East) Limited operates a policy of continual product development and the specifications outlined in this brochure are indicative only. The computer generated images and photographs do not necessarily represent the actual finishings/elevation or treatments, landscaping, furnishings and fittings at this development. Information contained is accurate at date of publication on 03.07.24. See the main brochure for the full Consumer Protection statement.



The Arran

3 bedroom terraced home



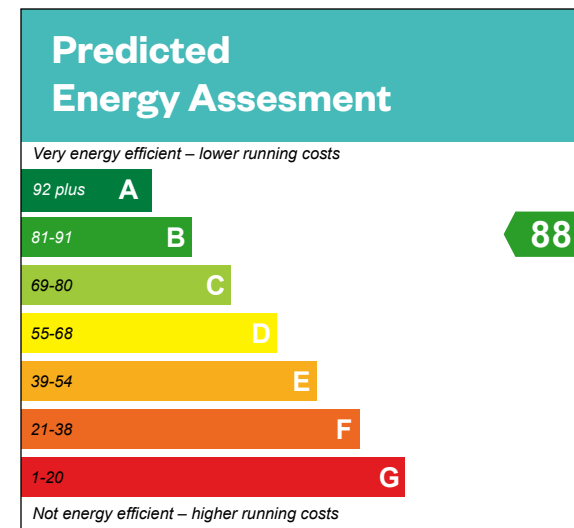
Computer generated image - The Arran

The Arran

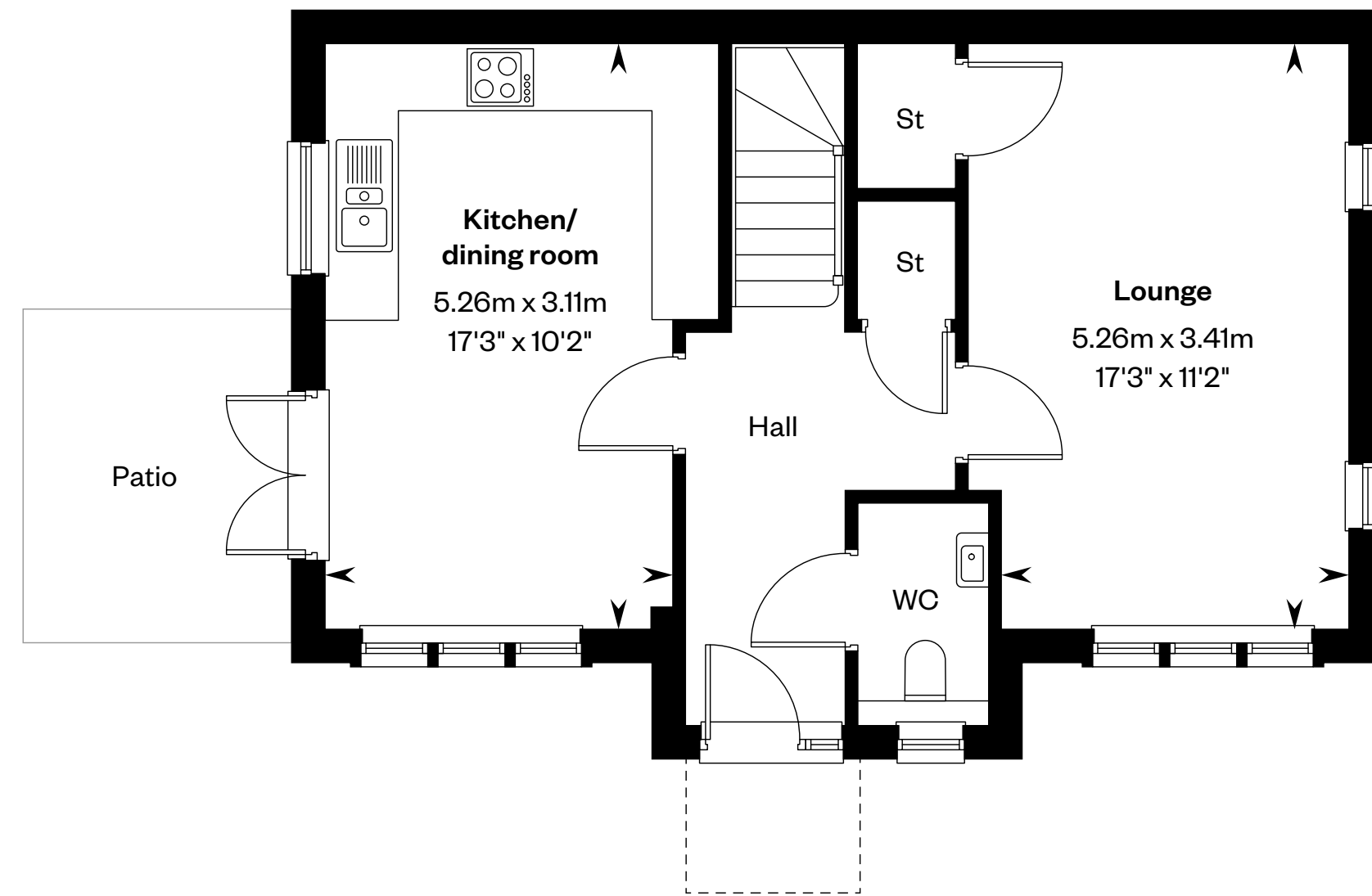
3 bedroom terraced home

Plots 13, 48, 53, 65 & 68 – as shown

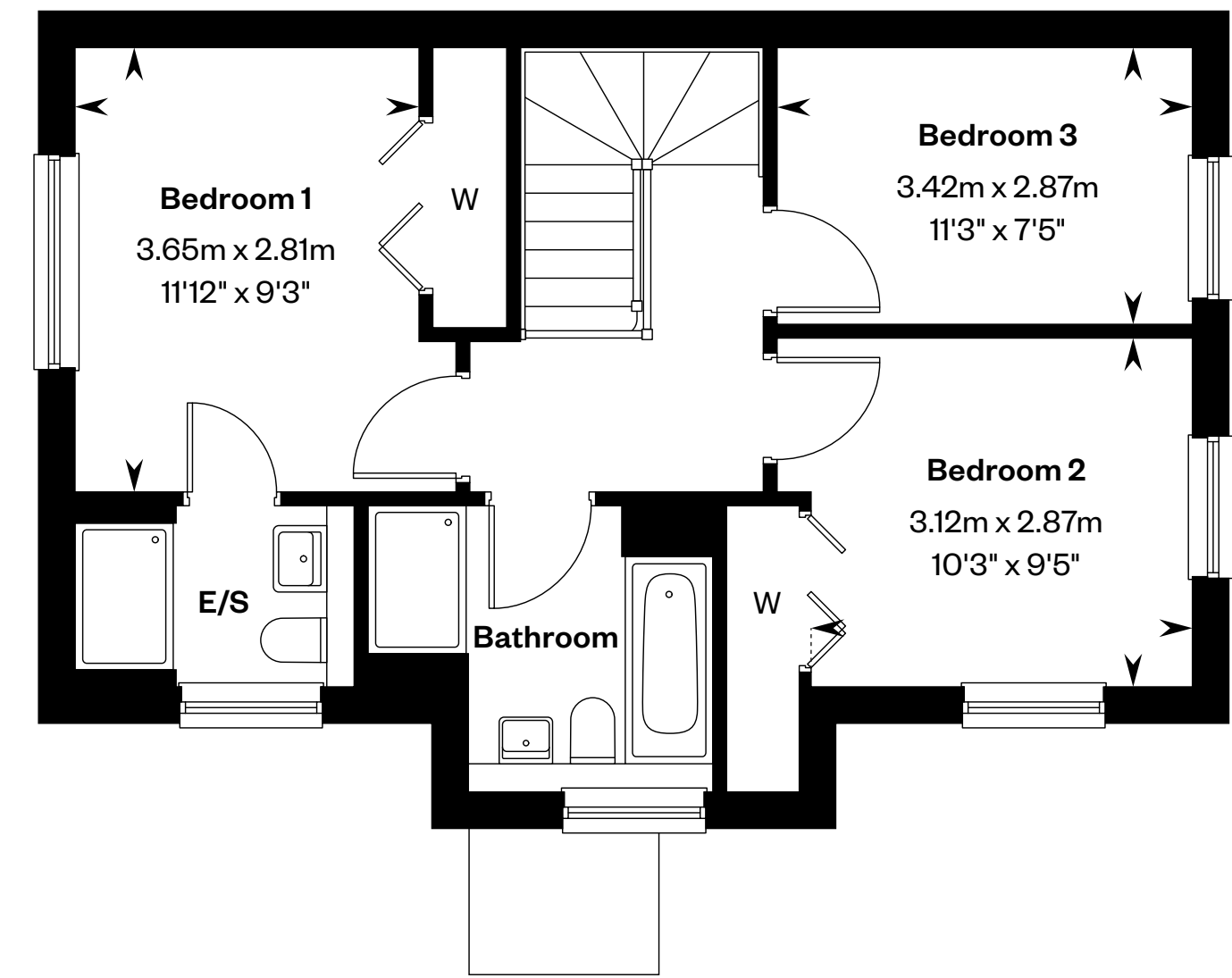
Plots 1, 5, 8, 50, 51 & 107 – handed



This is a Predicted Energy Assessment for properties that are incomplete. Once the property is completed, this rating will be updated and an official Energy Performance certificate will be created for the property.



Ground floor



First floor

Please ask your Sales Consultant for further details. St: Store cupboard. W: Wardrobe.

IMPORTANT NOTICE TO CUSTOMERS: The Consumer Protection from Unfair Trading Regulations 2008. Cala Homes (East) Limited operates a policy of continual product development and the specifications outlined in this brochure are indicative only. The computer generated images and photographs do not necessarily represent the actual finishings/elevation or treatments, landscaping, furnishings and fittings at this development. Information contained is accurate at date of publication on 03.07.24. See the main brochure for the full Consumer Protection statement.



The Barrie

4 bedroom detached home



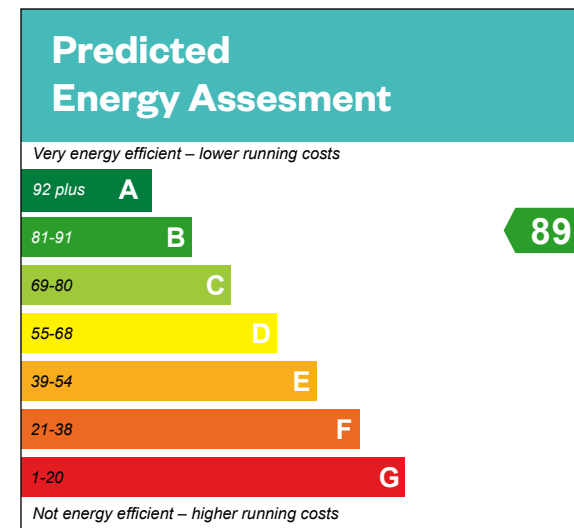
Computer generated image - The Barrie

The Barrie

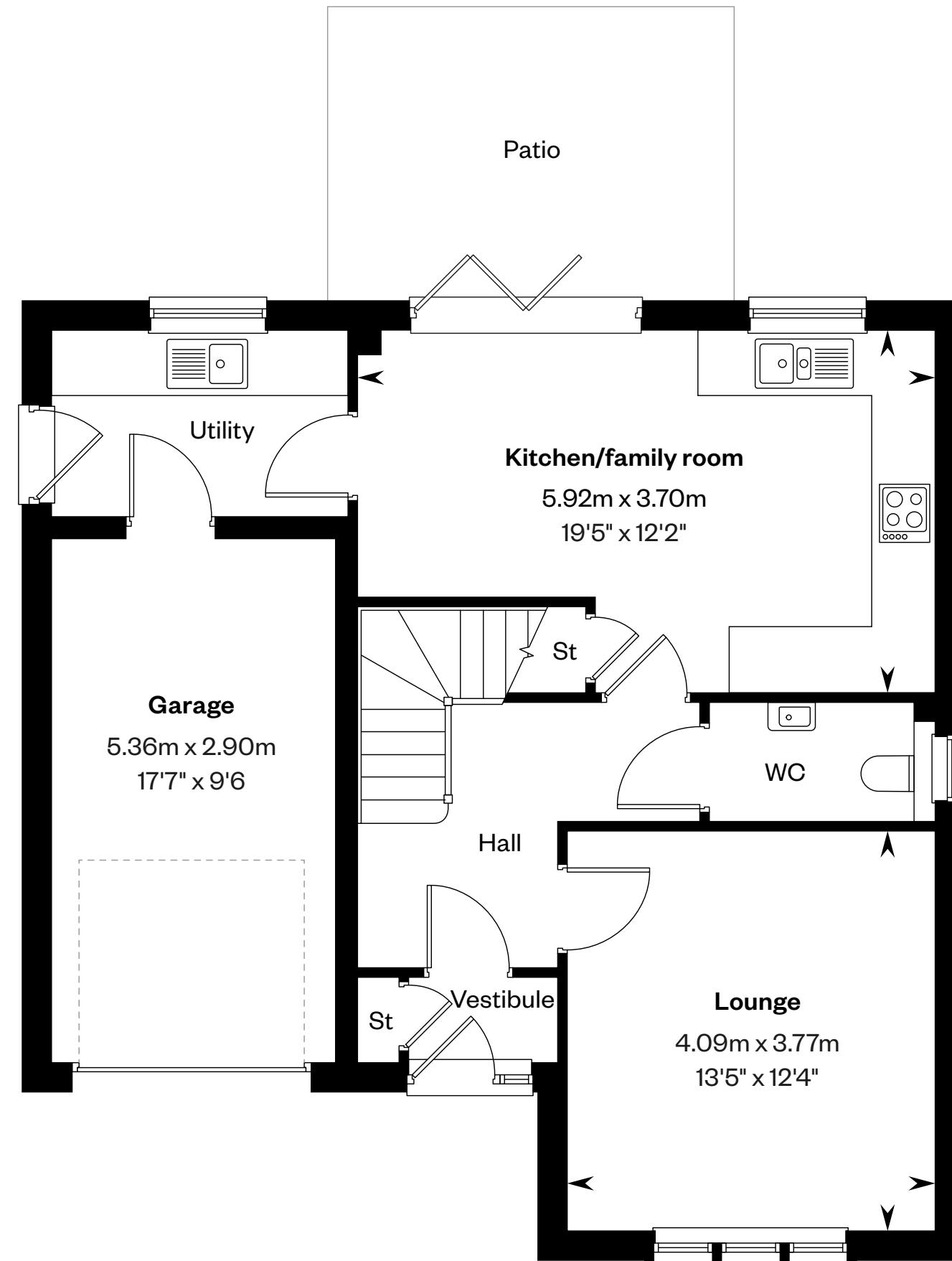
4 bedroom detached home

Plots 15 & 66 – as shown

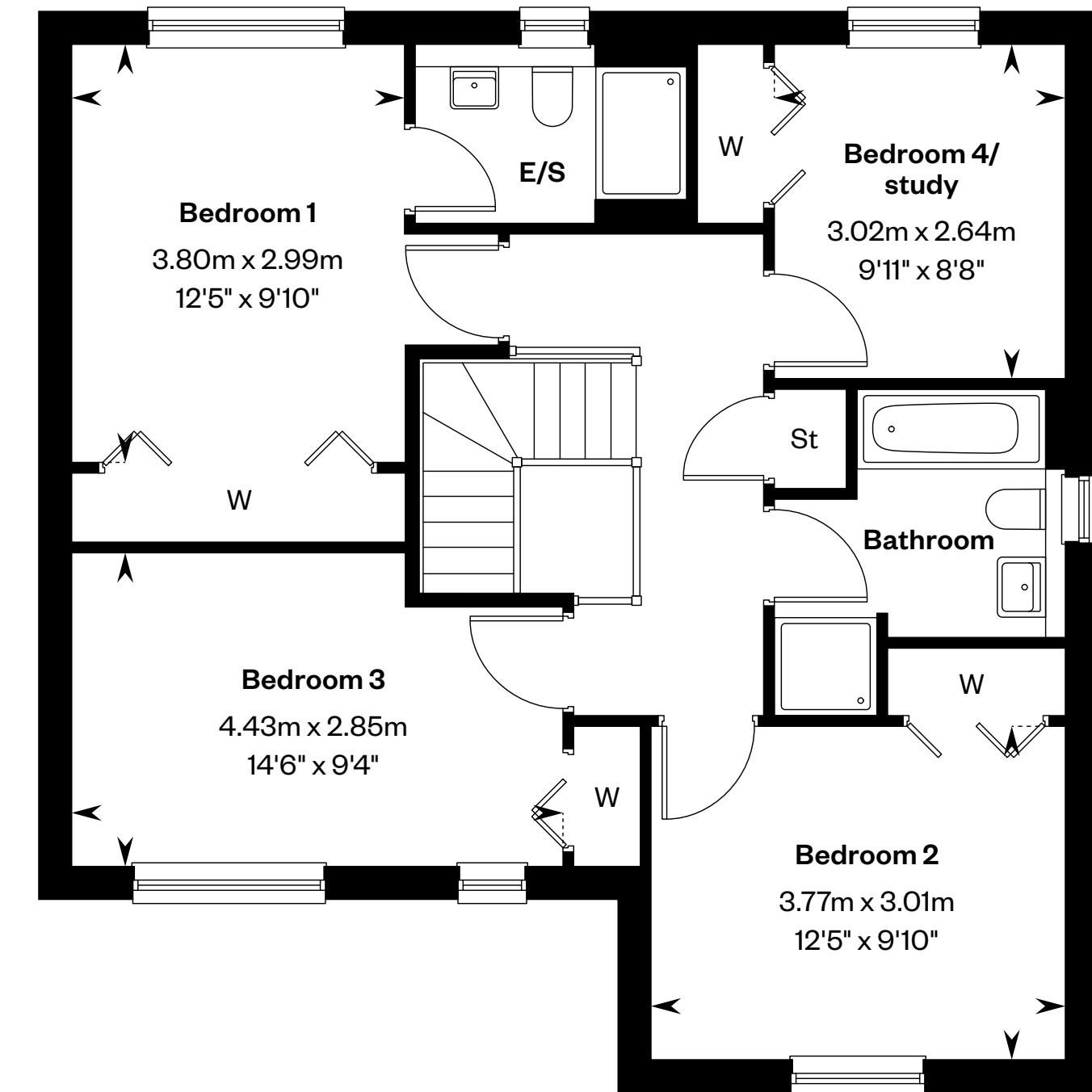
Plots 18, 35, 40 & 43 – handed



This is a Predicted Energy Assessment for properties that are incomplete. Once the property is completed, this rating will be updated and an official Energy Performance certificate will be created for the property.



Ground floor



First floor

Please ask your Sales Consultant for further details. E/S: En-Suite. St: Store cupboard. W: Wardrobe.

IMPORTANT NOTICE TO CUSTOMERS: The Consumer Protection from Unfair Trading Regulations 2008. Cala Homes (East) Limited operates a policy of continual product development and the specifications outlined in this brochure are indicative only. The computer generated images and photographs do not necessarily represent the actual finishings/elevation or treatments, landscaping, furnishings and fittings at this development. Information contained is accurate at date of publication on 03.07.24. See the main brochure for the full Consumer Protection statement.



The Bryce

4 bedroom detached home

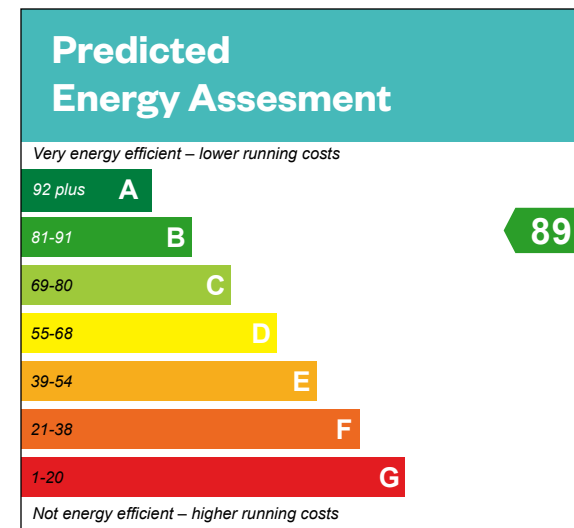


The Bryce

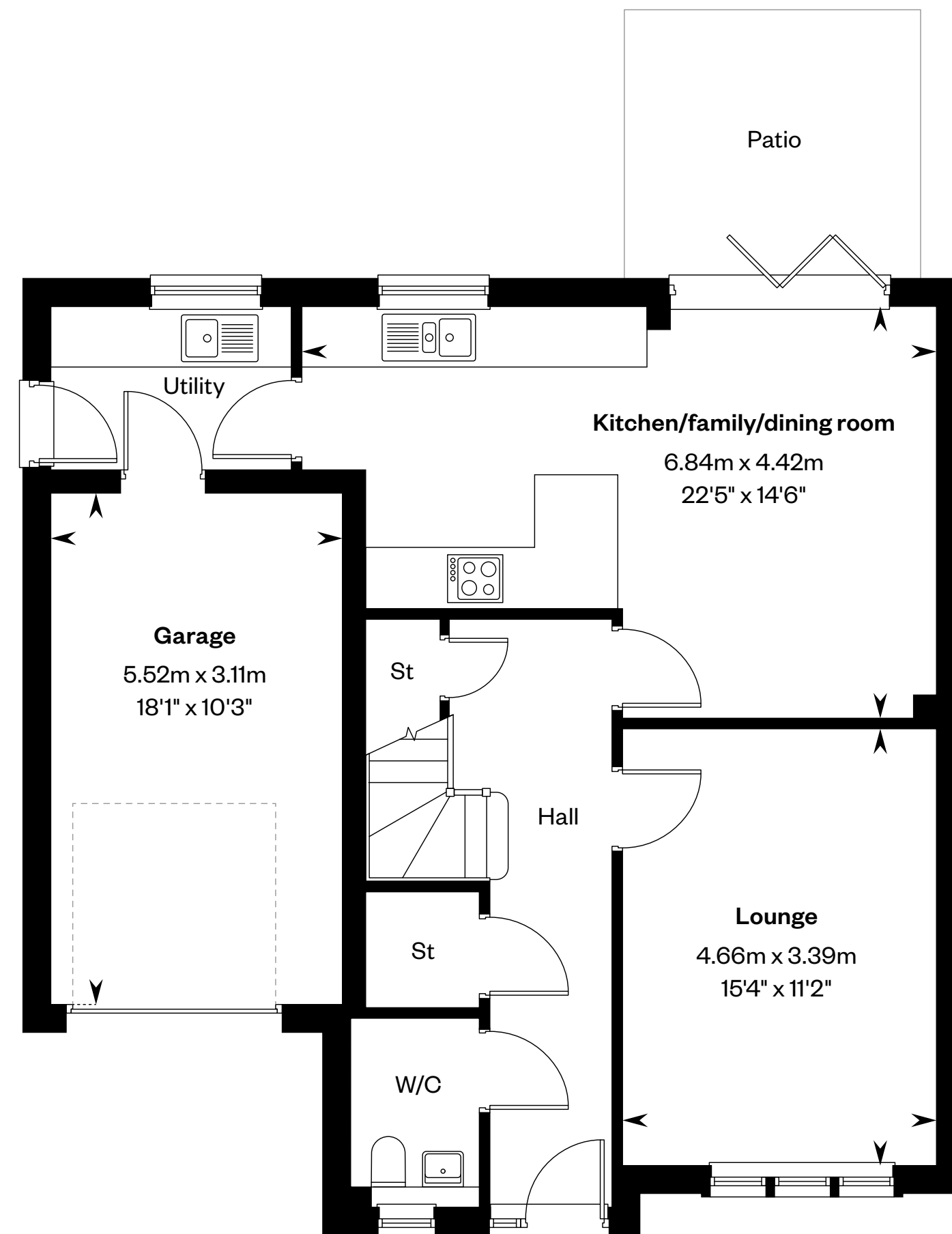
4 bedroom detached home

Plots 73, 82, 92 & 95 – as shown

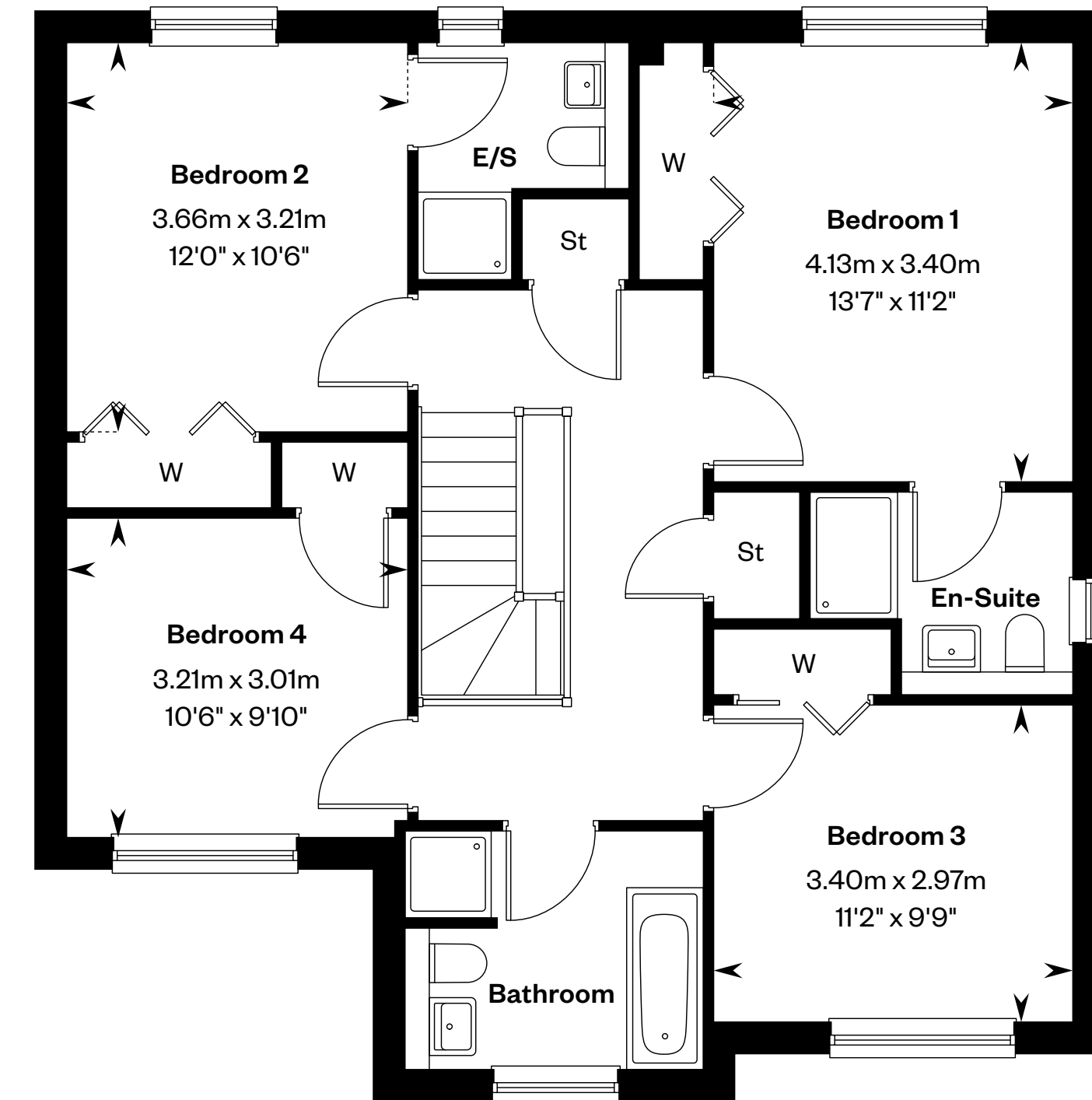
Plots 36, 44, 81, 98 & 102 – handed



This is a Predicted Energy Assessment for properties that are incomplete. Once the property is completed, this rating will be updated and an official Energy Performance certificate will be created for the property.



Ground floor



First floor

Please ask your Sales Consultant for further details. E/S: En-Suite. St: Store cupboard. W: Wardrobe.

IMPORTANT NOTICE TO CUSTOMERS: The Consumer Protection from Unfair Trading Regulations 2008. Cala Homes (East) Limited operates a policy of continual product development and the specifications outlined in this brochure are indicative only. The computer generated images and photographs do not necessarily represent the actual finishings/elevation or treatments, landscaping, furnishings and fittings at this development. Information contained is accurate at date of publication on 03.07.24. See the main brochure for the full Consumer Protection statement.



The Cairn

4 bedroom detached home



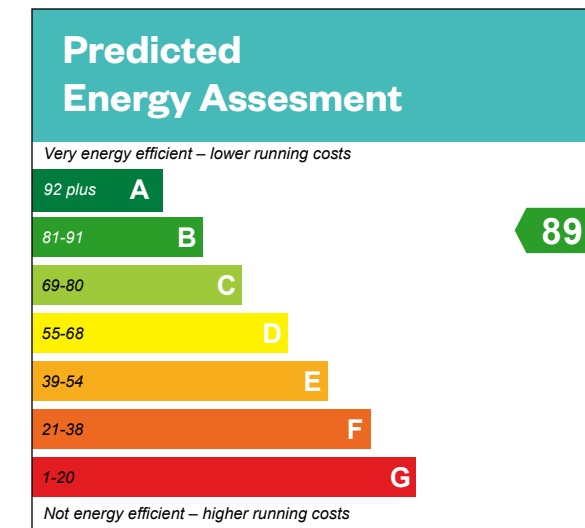
Computer generated image - The Cairn

The Cairn

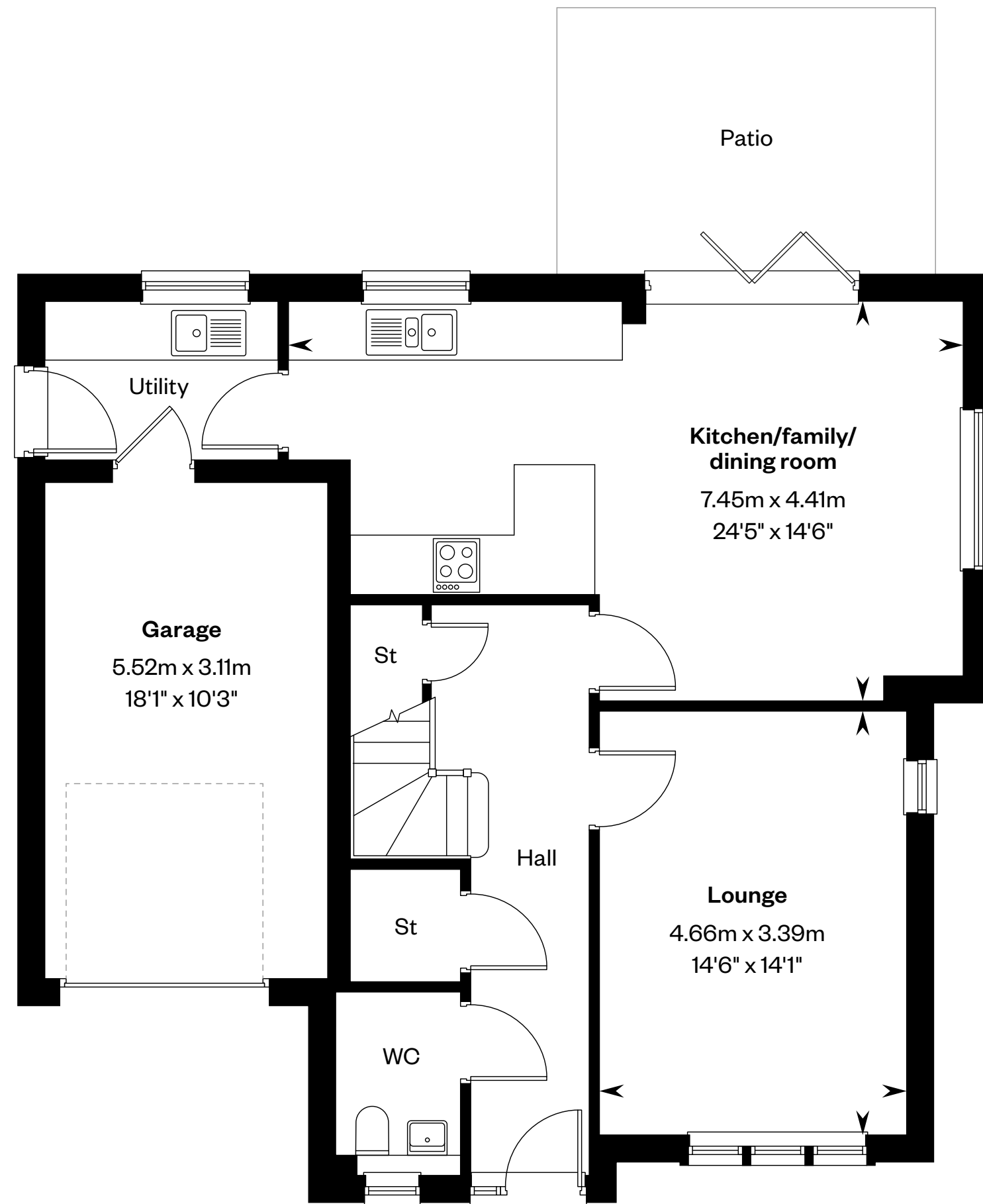
4 bedroom detached home

Plots 14, 17, 39, 77 & 87 – as shown

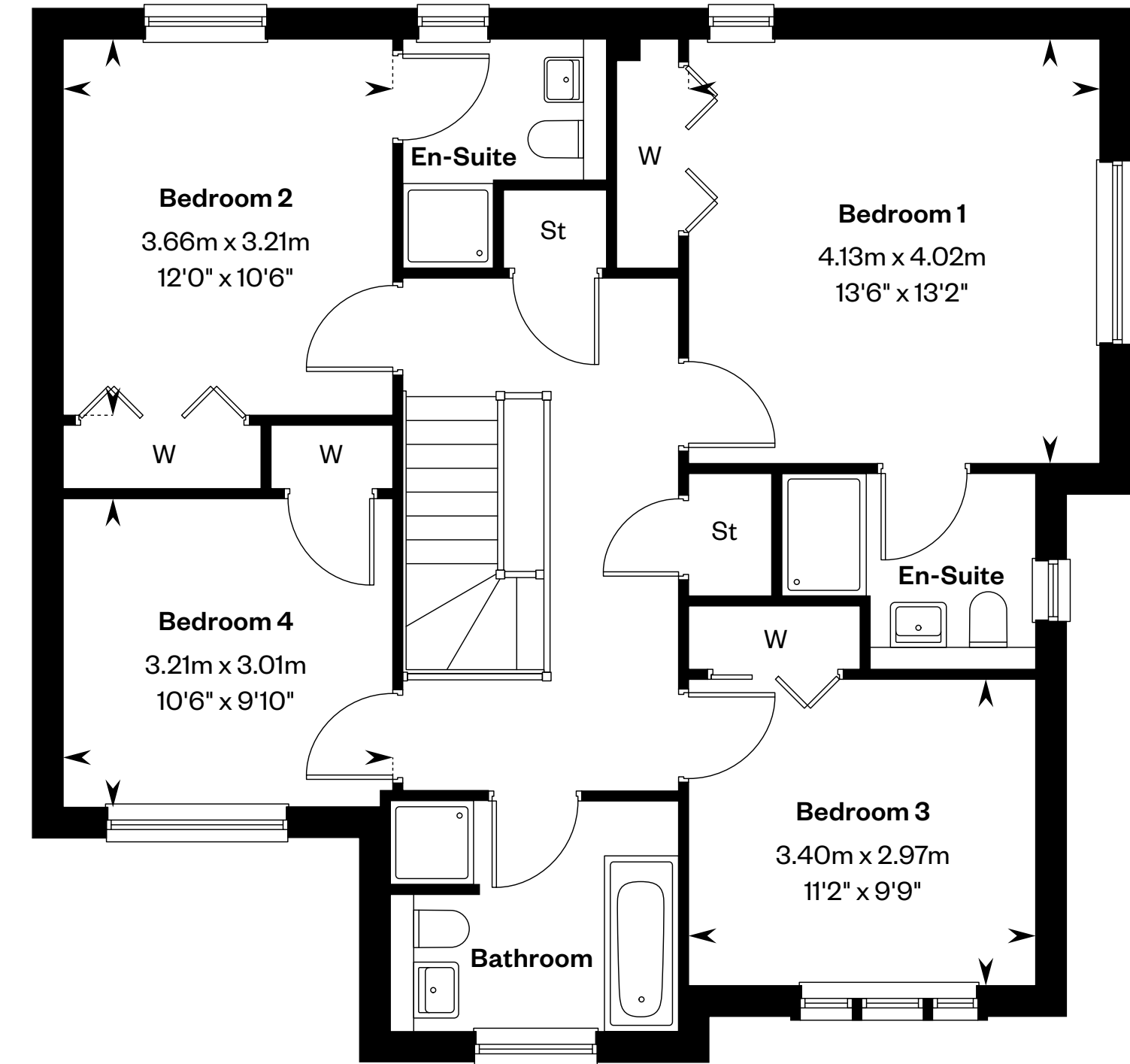
Plots 16, 19, 20, 34, 47, 76, 86 & 97 – handed



This is a Predicted Energy Assessment for properties that are incomplete. Once the property is completed, this rating will be updated and an official Energy Performance certificate will be created for the property.



Ground floor



First floor

Please ask your Sales Consultant for further details. St: Store cupboard. W: Wardrobe.

IMPORTANT NOTICE TO CUSTOMERS: The Consumer Protection from Unfair Trading Regulations 2008. Cala Homes (East) Limited operates a policy of continual product development and the specifications outlined in this brochure are indicative only. The computer generated images and photographs do not necessarily represent the actual finishings/elevation or treatments, landscaping, furnishings and fittings at this development. Information contained is accurate at date of publication on 03.07.24. See the main brochure for the full Consumer Protection statement.



The Colville

4 bedroom detached home with study



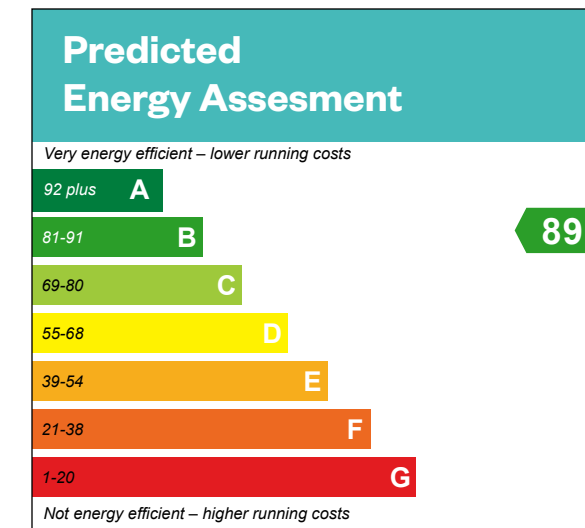
Computer generated image - The Colville

The Colville

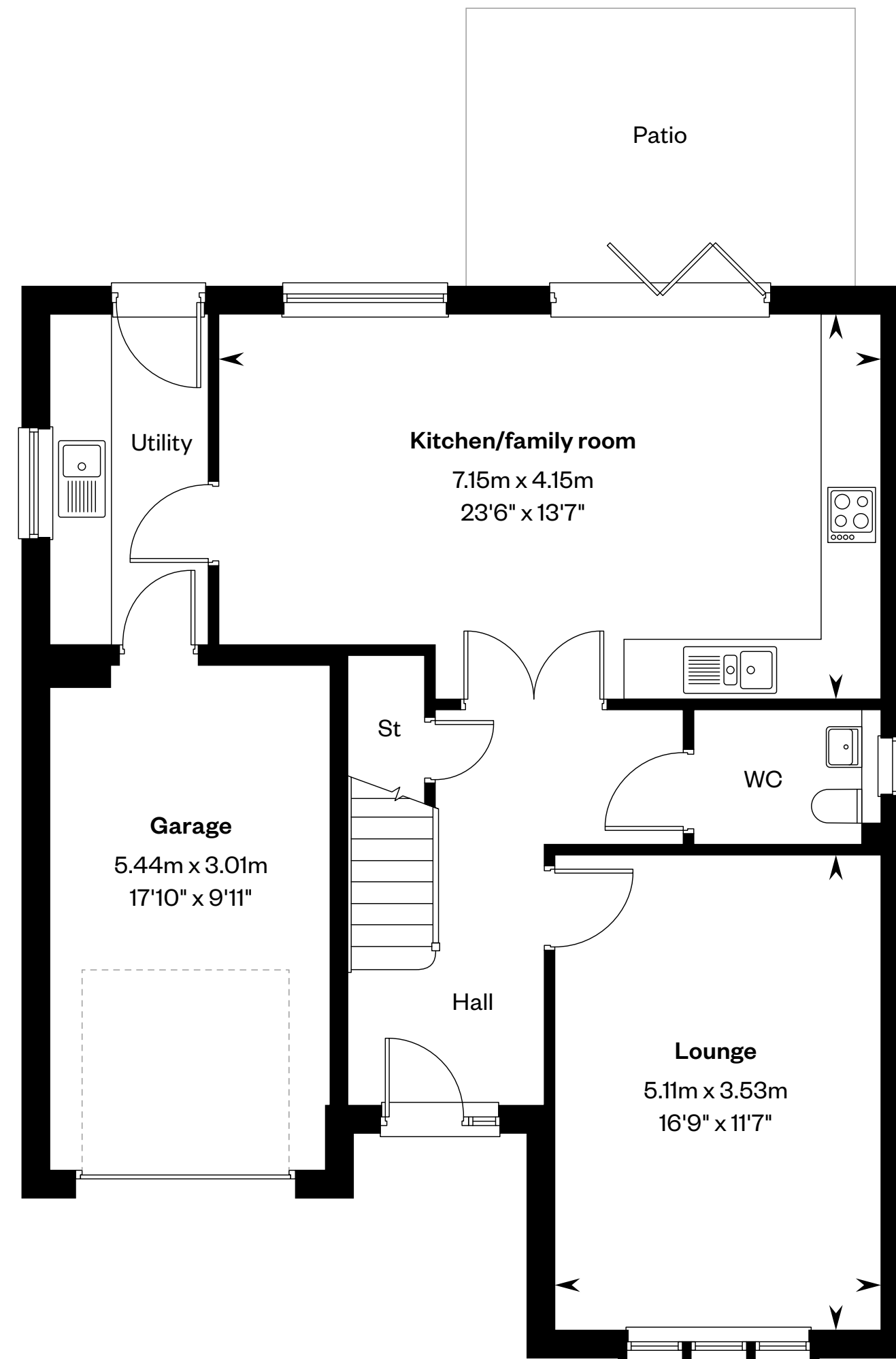
4 bedroom detached home with study

Plots 45, 75, 84 & 93 – as shown

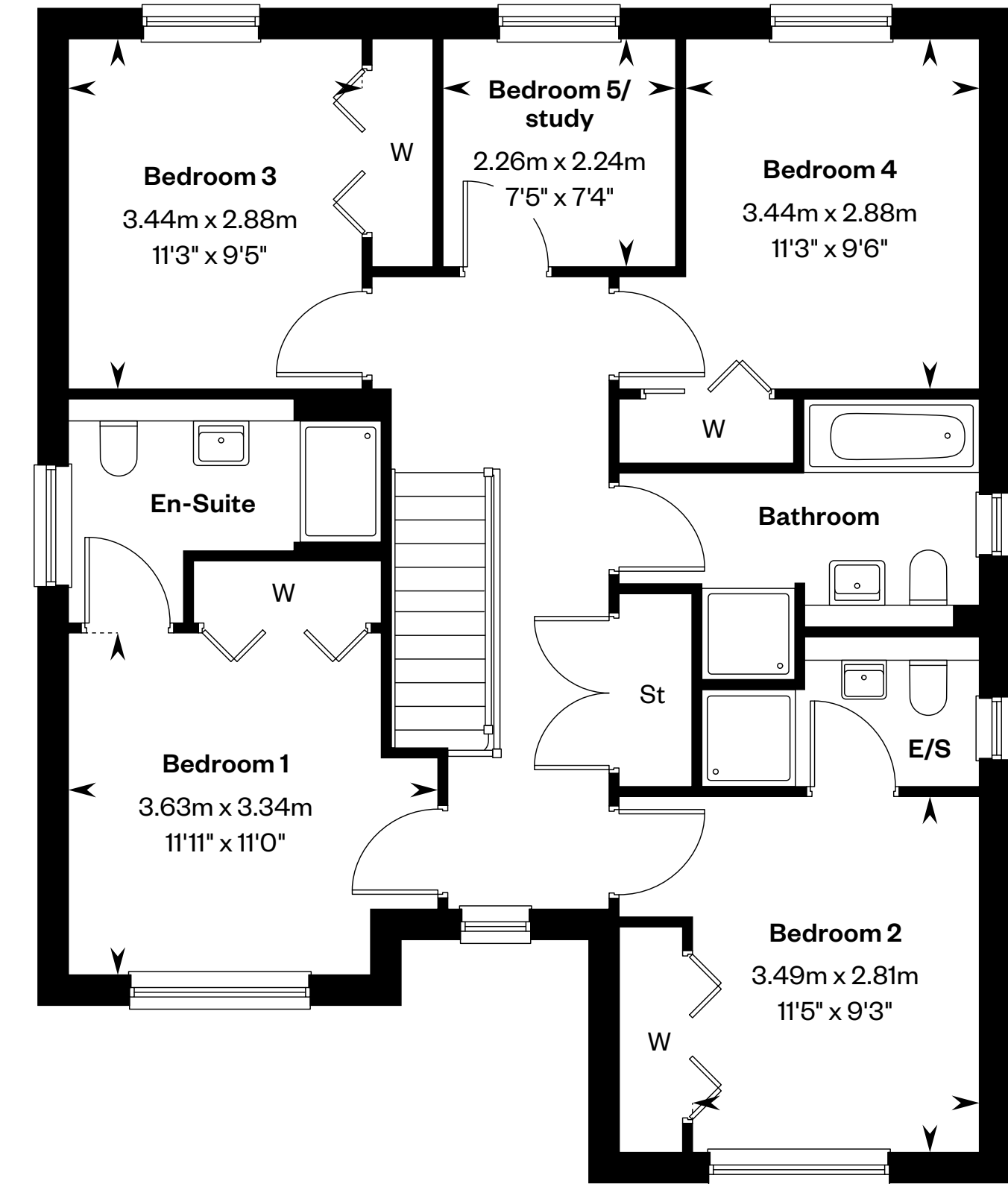
Plots 67, 78 & 79 – handed



This is a Predicted Energy Assessment for properties that are incomplete. Once the property is completed, this rating will be updated and an official Energy Performance certificate will be created for the property.



Ground floor



First floor

Please ask your Sales Consultant for further details. E/S: En-Suite. St: Store cupboard. W: Wardrobe.

IMPORTANT NOTICE TO CUSTOMERS: The Consumer Protection from Unfair Trading Regulations 2008. Cala Homes (East) Limited operates a policy of continual product development and the specifications outlined in this brochure are indicative only. The computer generated images and photographs do not necessarily represent the actual finishings/elevation or treatments, landscaping, furnishings and fittings at this development. Information contained is accurate at date of publication on 03.07.24. See the main brochure for the full Consumer Protection statement.



The Crichton

5 bedroom detached home



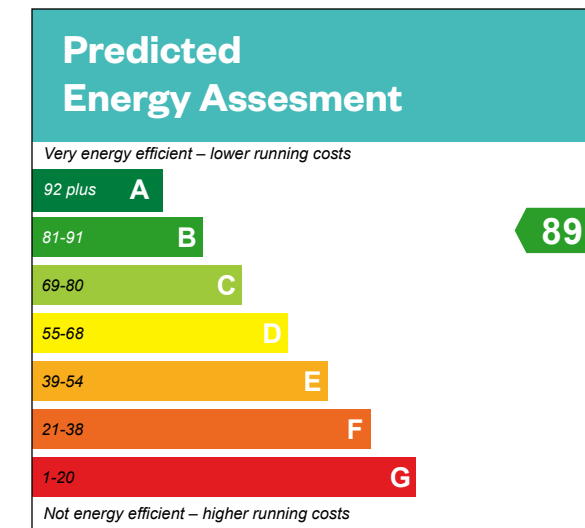
Computer generated image - The Crichton

The Crichton

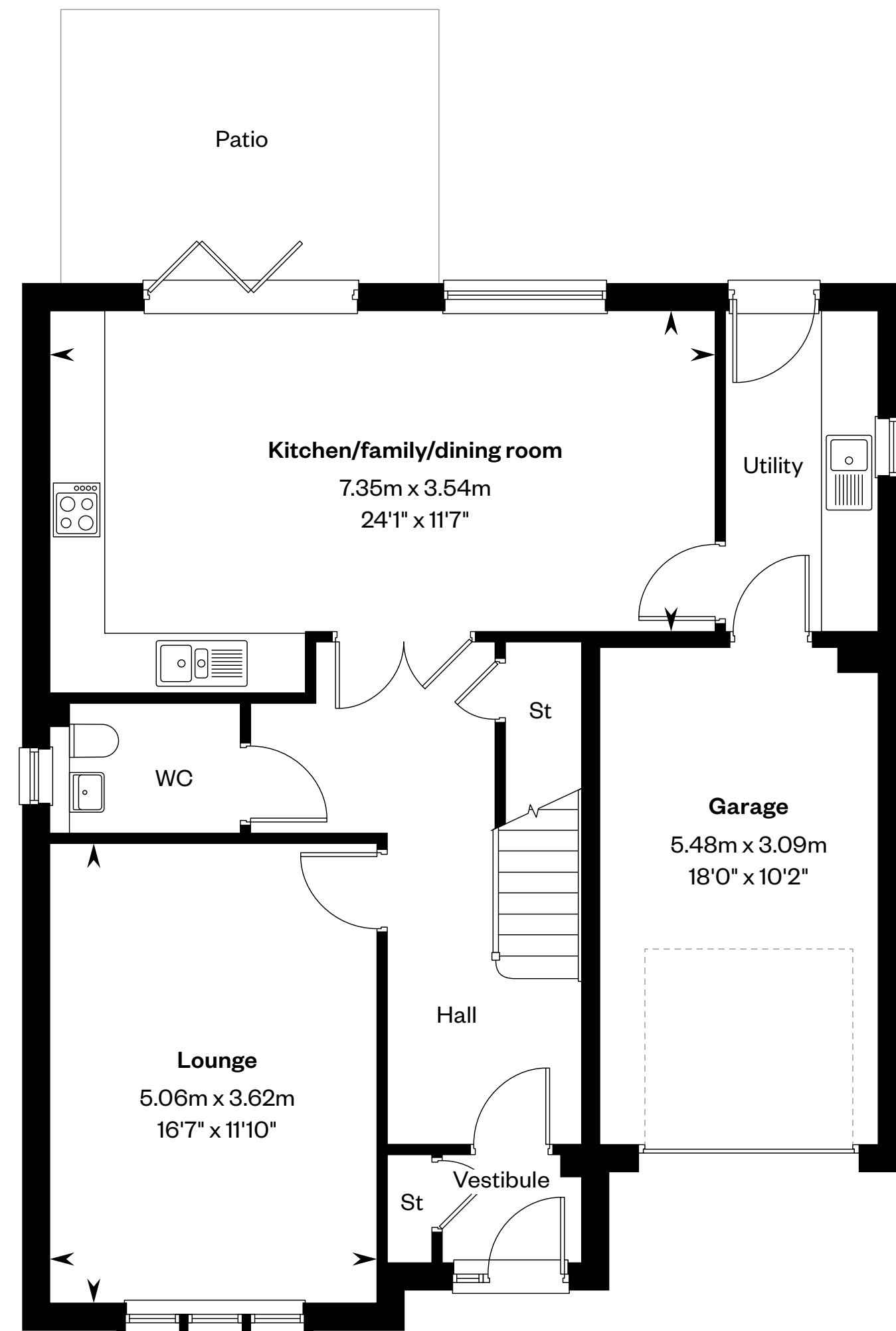
5 bedroom detached home

Plots 30, 33, 41, 80, 90, 91, 99 & 108 – as shown

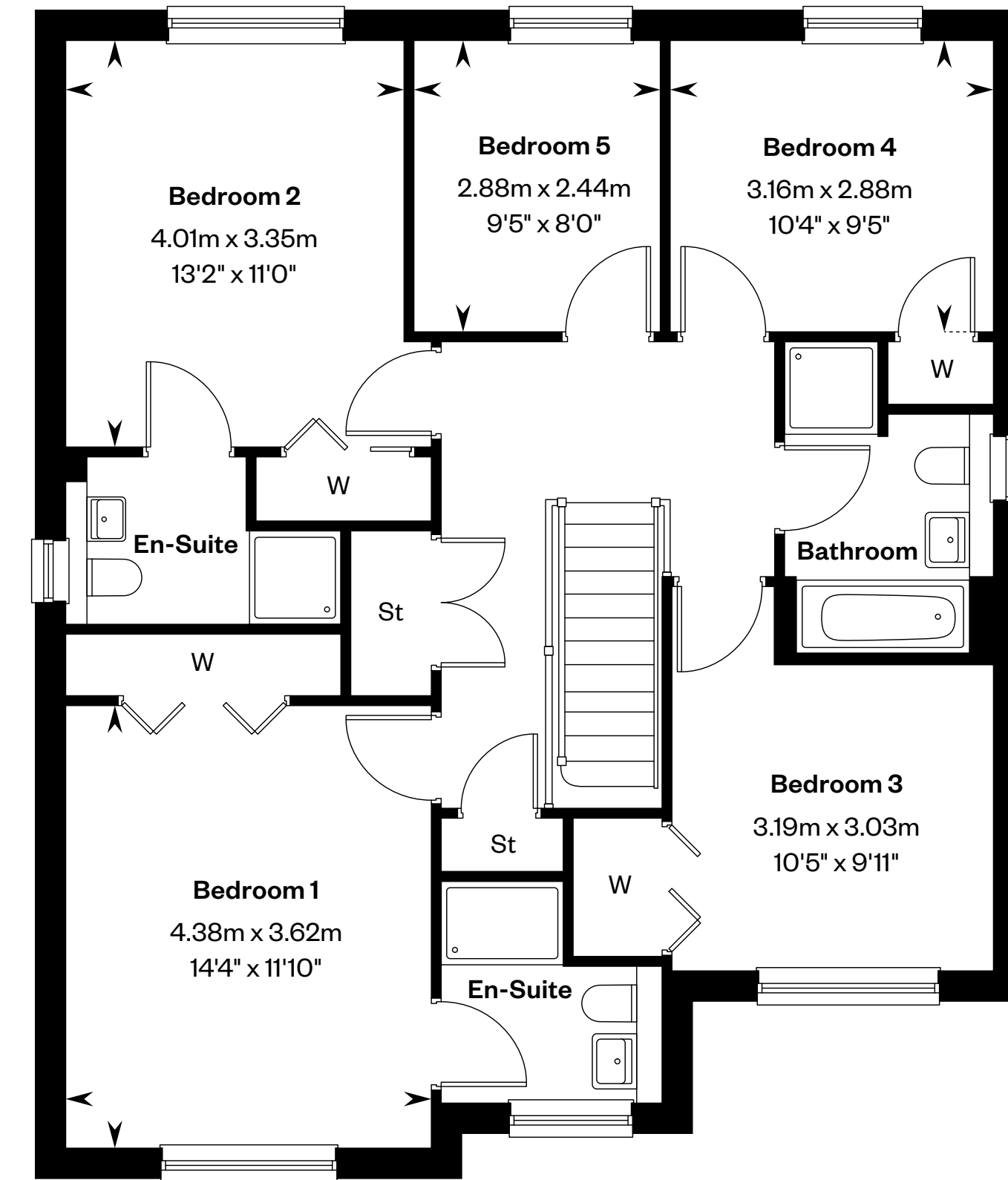
Plots 74, 85, 94 & 113 – handed



This is a Predicted Energy Assessment for properties that are incomplete. Once the property is completed, this rating will be updated and an official Energy Performance certificate will be created for the property.



Ground floor



First floor

Please ask your Sales Consultant for further details. St: Store cupboard. W: Wardrobe.

IMPORTANT NOTICE TO CUSTOMERS: The Consumer Protection from Unfair Trading Regulations 2008. Cala Homes (East) Limited operates a policy of continual product development and the specifications outlined in this brochure are indicative only. The computer generated images and photographs do not necessarily represent the actual finishings/elevation or treatments, landscaping, furnishings and fittings at this development. Information contained is accurate at date of publication on 03.07.24. See the main brochure for the full Consumer Protection statement.



The Darroch

5 bedroom detached home



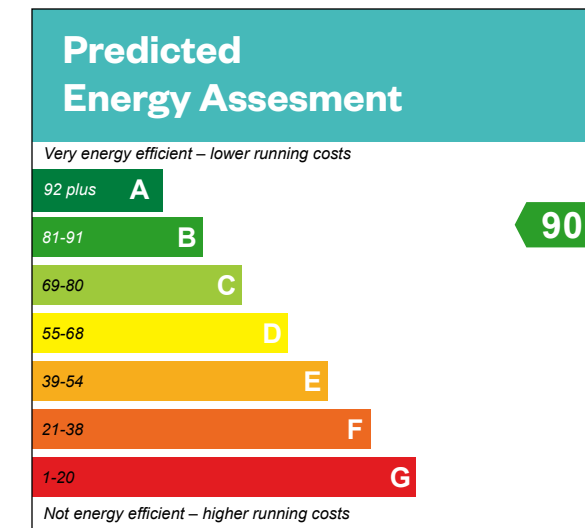
Computer generated image - The Darroch

The Darroch

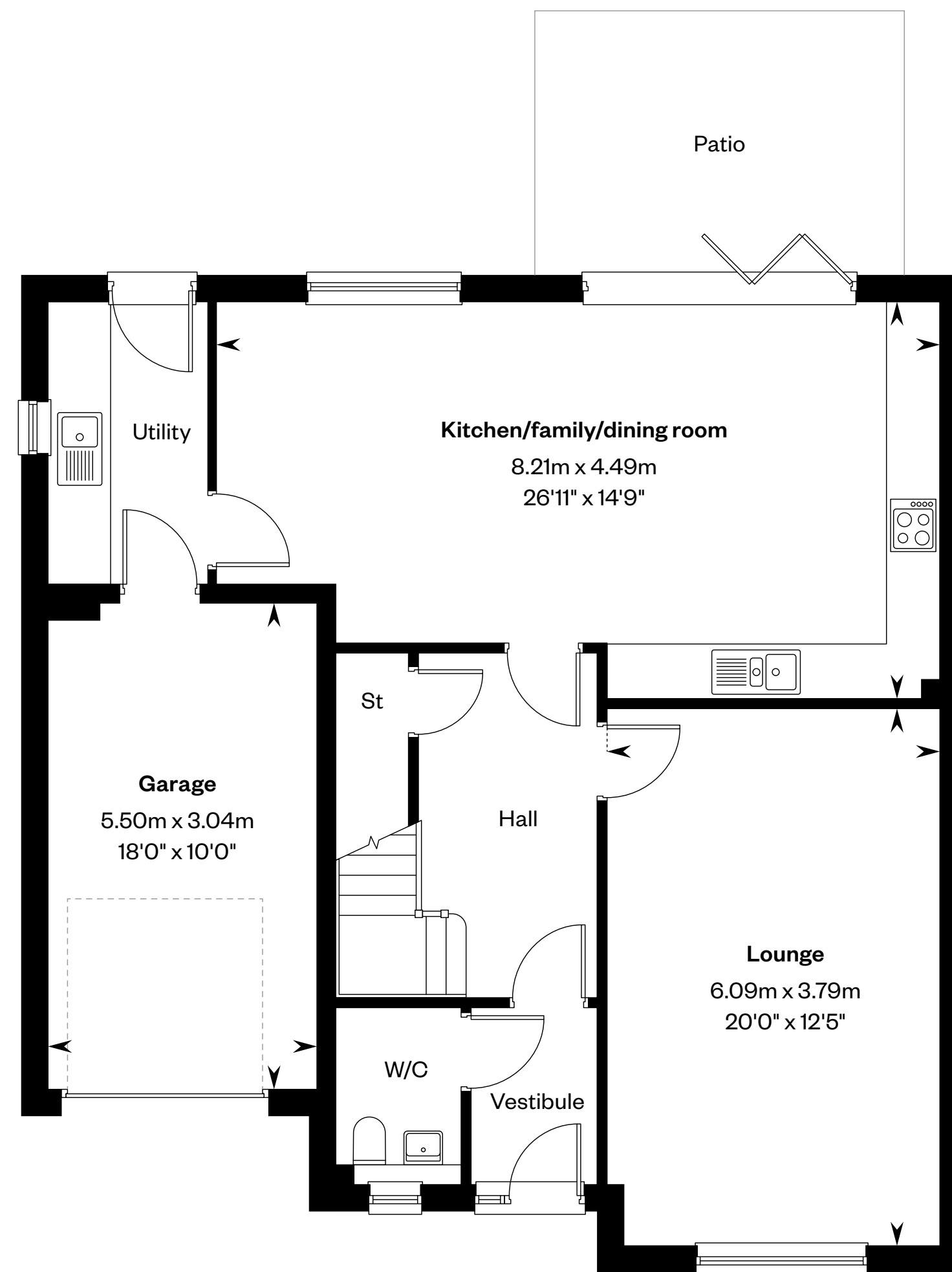
5 bedroom detached home

Plots 31, 111 & 112 – as shown

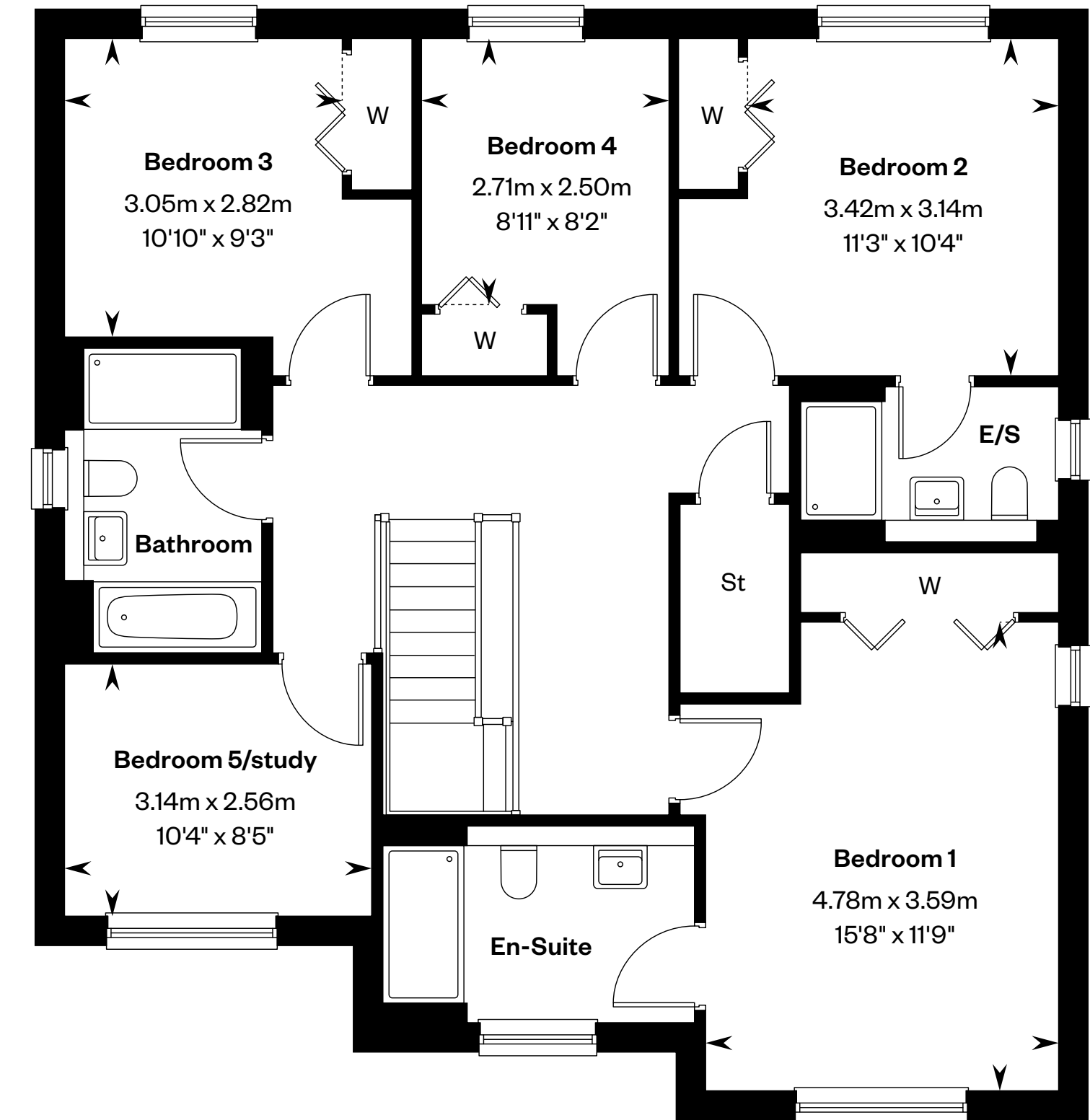
Plots 29, 32, 88 & 101 – handed



This is a Predicted Energy Assessment for properties that are incomplete. Once the property is completed, this rating will be updated and an official Energy Performance certificate will be created for the property.



Ground floor



First floor

Please ask your Sales Consultant for further details. E/S: En-Suite. St: Store cupboard. W: Wardrobe.

IMPORTANT NOTICE TO CUSTOMERS: The Consumer Protection from Unfair Trading Regulations 2008. Cala Homes (East) Limited operates a policy of continual product development and the specifications outlined in this brochure are indicative only. The computer generated images and photographs do not necessarily represent the actual finishings/elevation or treatments, landscaping, furnishings and fittings at this development. Information contained is accurate at date of publication on 03.07.24. See the main brochure for the full Consumer Protection statement.



The Dewar

5 bedroom detached home



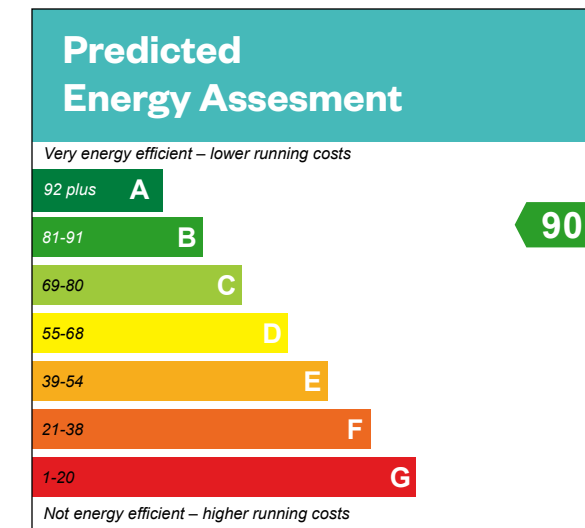
Computer generated image - The Dewar

The Dewar

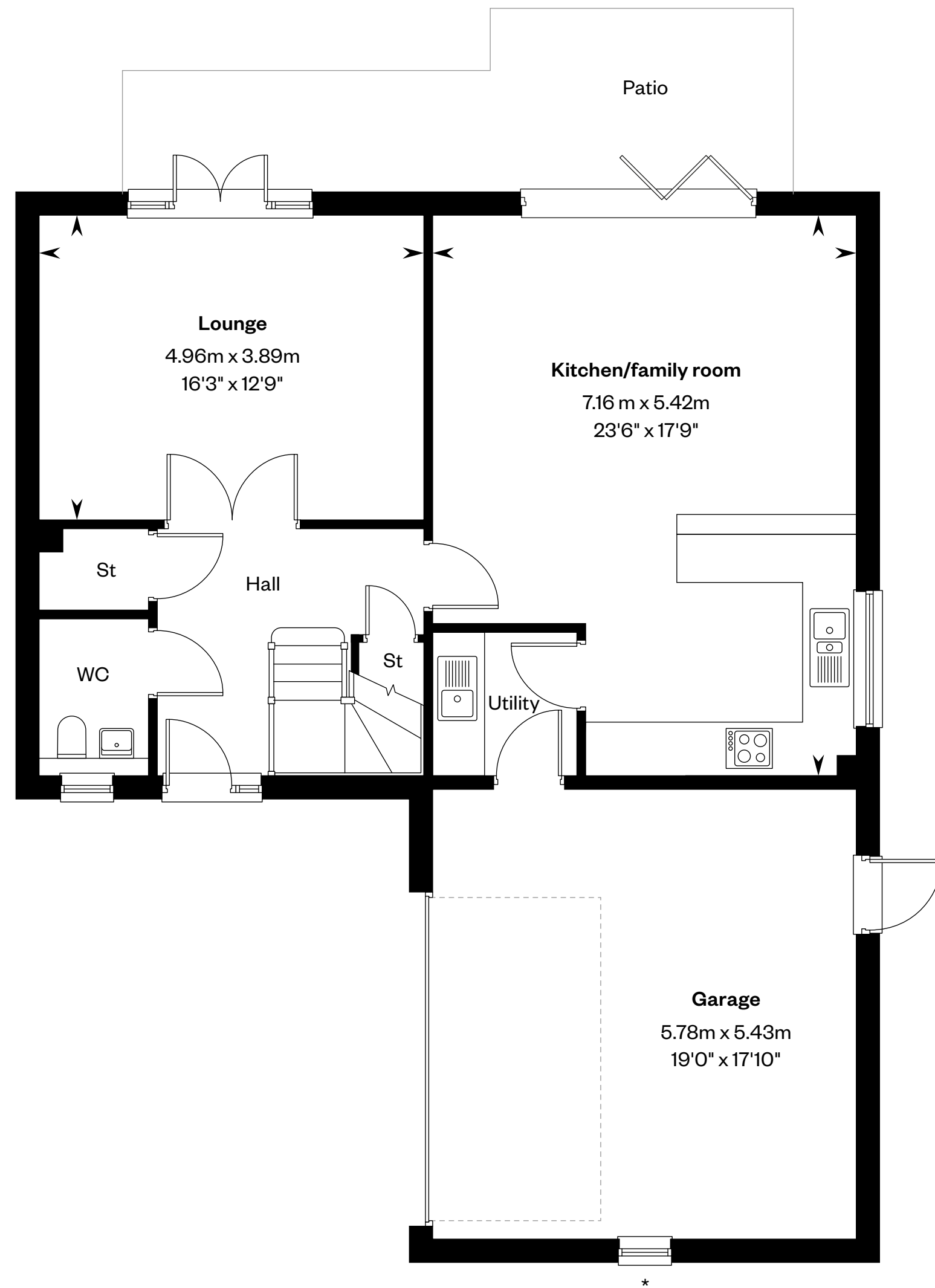
5 bedroom detached home

Plot 28 – as shown

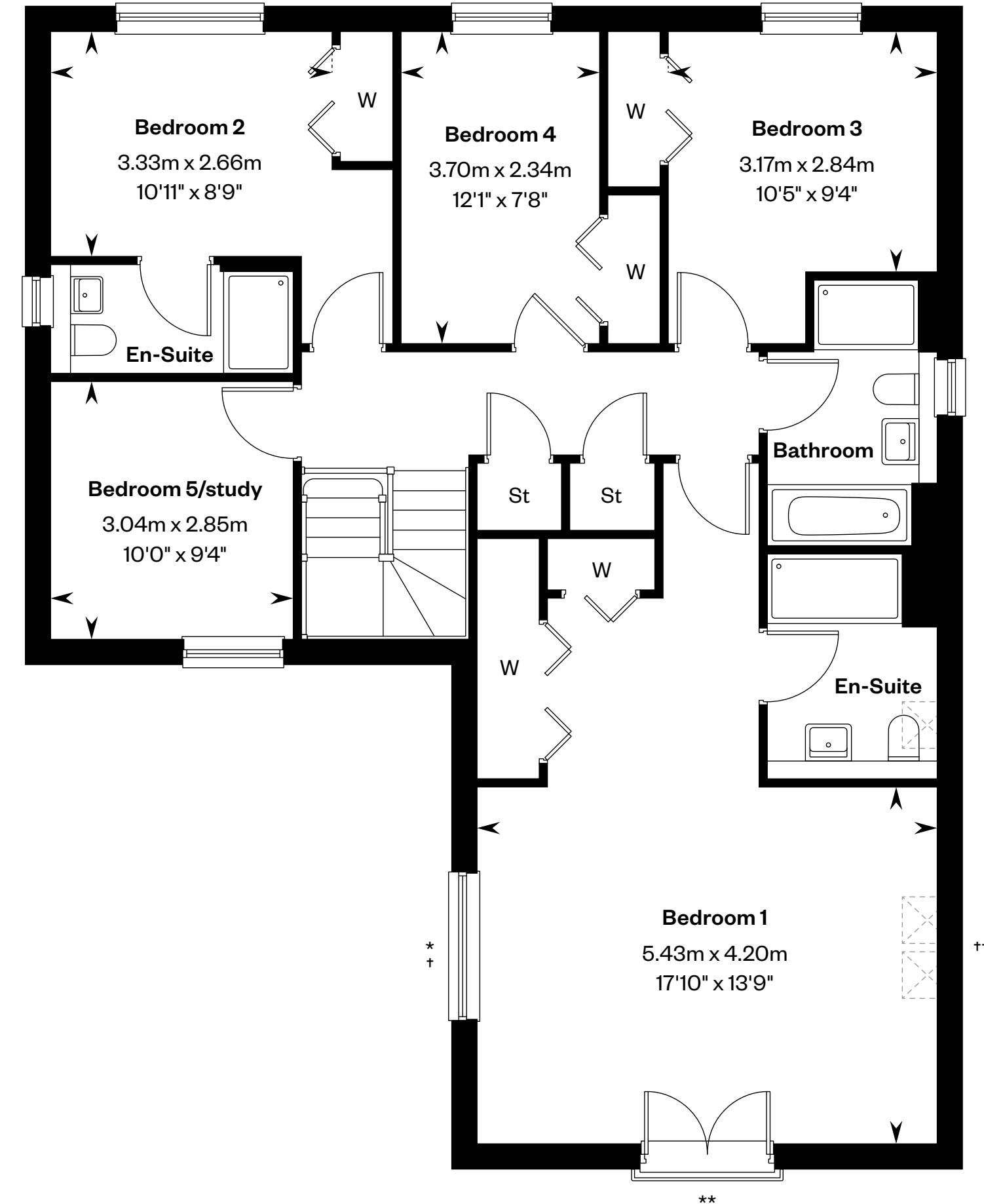
Plot 42 – handed



This is a Predicted Energy Assessment for properties that are incomplete. Once the property is completed, this rating will be updated and an official Energy Performance certificate will be created for the property.



First floor



Ground floor

*Window to plot 28 only. **Juliet balcony to plot 28 only. †Juliet balcony to plot 42 only. ††Roof lights to plot 42 only. Please ask your Sales Consultant for further details. St: Store cupboard. W: Wardrobe. ☒: Roof light/velux window.

IMPORTANT NOTICE TO CUSTOMERS: The Consumer Protection from Unfair Trading Regulations 2008. Cala Homes (East) Limited operates a policy of continual product development and the specifications outlined in this brochure are indicative only. The computer generated images and photographs do not necessarily represent the actual finishings/elevation or treatments, landscaping, furnishings and fittings at this development. Information contained is accurate at date of publication on 03.07.24. See the main brochure for the full Consumer Protection statement.



The Garvie

5 bedroom detached home



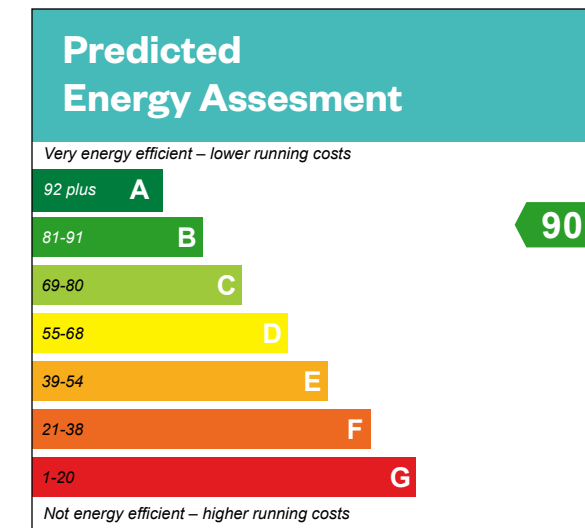
Computer generated image - The Garvie

The Garvie

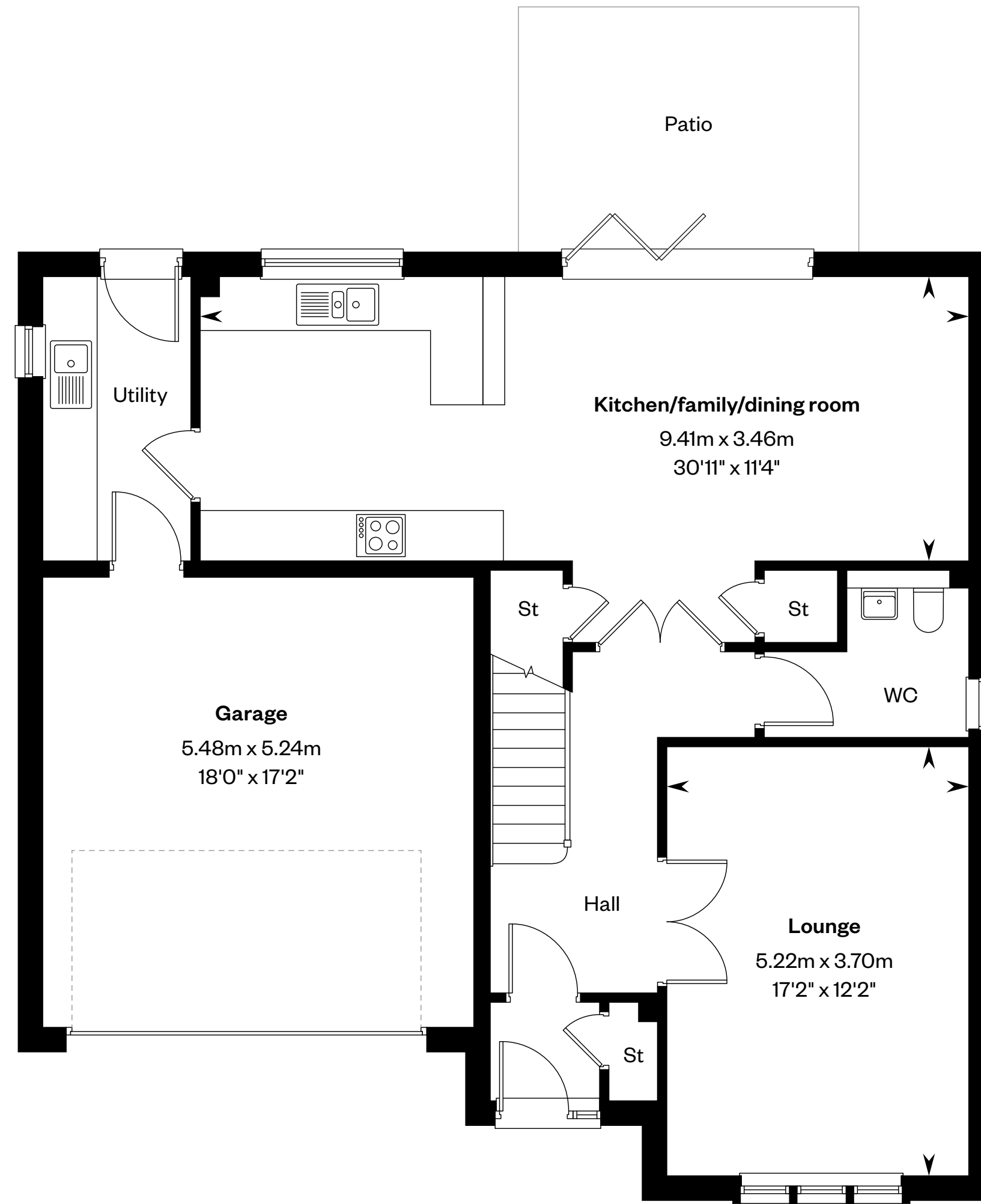
5 bedroom detached home

Plots 46, 83 & 110 – as shown

Plots 89, 96, 100 & 109 – handed



This is a Predicted Energy Assessment for properties that are incomplete. Once the property is completed, this rating will be updated and an official Energy Performance certificate will be created for the property.



First floor



Ground floor

Please ask your Sales Consultant for further details. St: Store cupboard. W: Wardrobe.

IMPORTANT NOTICE TO CUSTOMERS: The Consumer Protection from Unfair Trading Regulations 2008. Cala Homes (East) Limited operates a policy of continual product development and the specifications outlined in this brochure are indicative only. The computer generated images and photographs do not necessarily represent the actual finishings/elevation or treatments, landscaping, furnishings and fittings at this development. Information contained is accurate at date of publication on 03.07.24. See the main brochure for the full Consumer Protection statement.